

BRIDGE RAILING - HDSB  
/FASCIA MOUNTED/  
HANDRAIL (MOD.)

STA. 1+084.600 RT. - STA. 1+113.380 RT.  
STA. 1+083.500 LT. - STA. 1+113.380 LT.

GABION WALL

STA. 1+044.800 RT. - STA. 1+080.800 RT.

HDSB GUARD RAIL WITH WOOD POSTS (WEATHERING)

STA. 1+047.500 RT. - STA. 1+084.600 RT.  
STA. 1+113.380 RT. - STA. 1+128.640 RT.  
STA. 1+082.370 LT. - STA. 1+083.500 LT.  
STA. 1+113.380 LT. - STA. 1+127.700 LT.

RELOCATION OF MAILBOX

STA. 1+134.400 LT.

DECIDUOUS TREES  
(SEE GENERAL NOTE #19)

STA. 1+109.500 LT. +/- - STA. 1+120.000 LT. +/-

STONE FILL, TYPE I (IN DITCHES)

STA. 1+025.000 LT. - STA. 1+080.500 LT.  
STA. 1+112.500 RT. - STA. 1+145.000 RT.

CONSTRUCT DRIVE

STA. 1+078.000 LT.  
STA. 1+142.000 LT.

ANCHOR FOR STEEL BEAM RAIL

STA. 1+048.500 RT.  
STA. 1+082.443 LT.  
STA. 1+127.500 RT.  
STA. 1+125.600 LT.

PIPE OPTION (450)

STA. 1+040  
CSP  
CPEP  
CAAP

STA. 1+113.900 - 1+147.500 LT.

CSP  
CPEP  
CAAP

CURVE NO. 1 DATA  
 $\Delta = 27^{\circ}07'21.0''$   
R= 80.000  
T= 19.298  
L= 37.870  
E= 2.295  
BANK=VARIES

STA. 1+040 - 450 x 11 000 OPTION  
PIPE WITH D.I. AT INLET AND  
STONE FILL, TYPE I PAD AT OUTLET

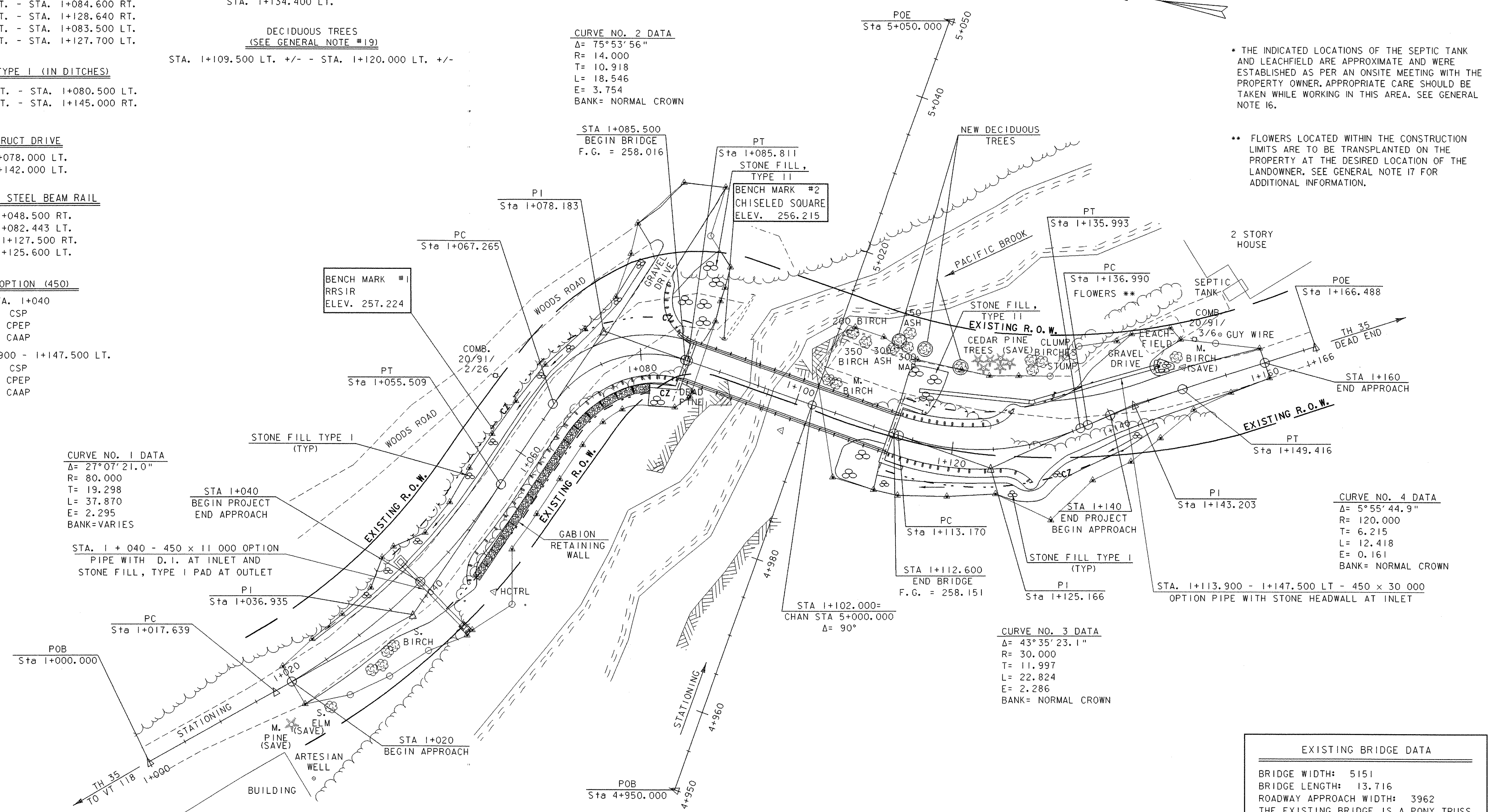
CURVE NO. 2 DATA  
 $\Delta = 75^{\circ}53'56''$   
R= 14.000  
T= 10.918  
L= 18.546  
E= 3.754  
BANK= NORMAL CROWN

CURVE NO. 4 DATA  
 $\Delta = 5^{\circ}55'44.9''$   
R= 120.000  
T= 6.215  
L= 12.418  
E= 0.161  
BANK= NORMAL CROWN

CURVE NO. 3 DATA  
 $\Delta = 43^{\circ}35'23.1''$   
R= 30.000  
T= 11.997  
L= 22.824  
E= 2.286  
BANK= NORMAL CROWN

• THE INDICATED LOCATIONS OF THE SEPTIC TANK AND LEACHFIELD ARE APPROXIMATE AND WERE ESTABLISHED AS PER AN ONSITE MEETING WITH THE PROPERTY OWNER. APPROPRIATE CARE SHOULD BE TAKEN WHILE WORKING IN THIS AREA. SEE GENERAL NOTE 16.

\*\* FLOWERS LOCATED WITHIN THE CONSTRUCTION LIMITS ARE TO BE TRANSPLANTED ON THE PROPERTY AT THE DESIRED LOCATION OF THE LANDOWNER. SEE GENERAL NOTE 17 FOR ADDITIONAL INFORMATION.



EXISTING BRIDGE DATA	
BRIDGE WIDTH:	5151
BRIDGE LENGTH:	13.716
ROADWAY APPROACH WIDTH:	3962
THE EXISTING BRIDGE IS A PONY TRUSS WITH A WOOD PLANK DECK WITH RUNNERS. THERE IS A ROLLED BEAM STRINGER AT EACH FASCIA WITH FOUR H-PILES IN BETWEEN SUPPORTING THE DECK. THE EXISTING ABUTMENTS ARE CONCRETE WITH METAL I-BEAM BACKWALLS.	

SHEET NAME: PLAN SHEET			
PROJECT NAME:	MONTGOMERY	HIGHWAY NO.:	TH 35
PROJECT NUMBER:	BRO 1448(20)	BRIDGE NO.:	24
		OVER:	PACIFIC BROOK
FILE NAME:	/PW/94j124/sj124bdr.dgn	PLOT DATE:	06-DEC-2005
PROJECT MANAGER:	R. WHITCOMB	DRAWN BY:	J. GILMORE
DESIGNED BY:	C. CARLSON	IPARM NAME:	sj124cl.1
BRIDGE SHEET NUMBER:		SHEET	9 OF 50

