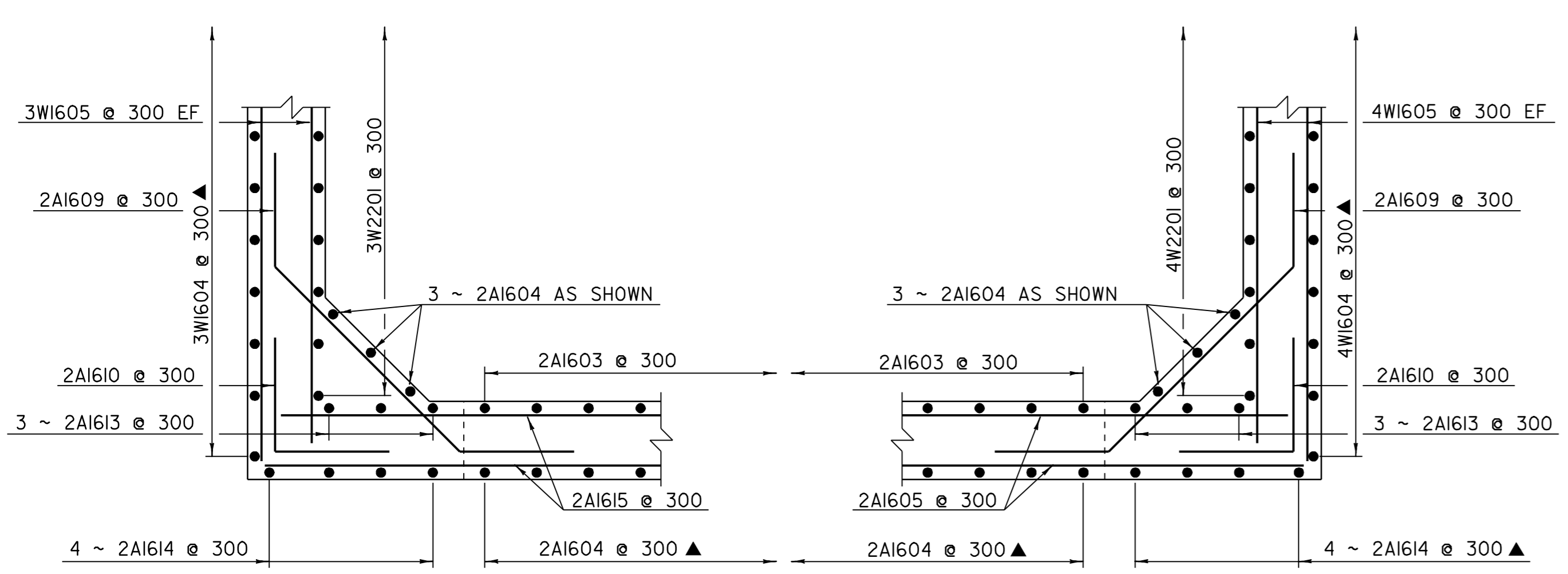
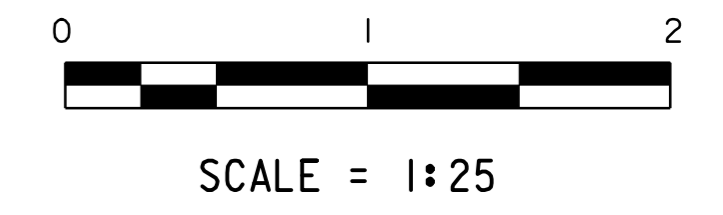


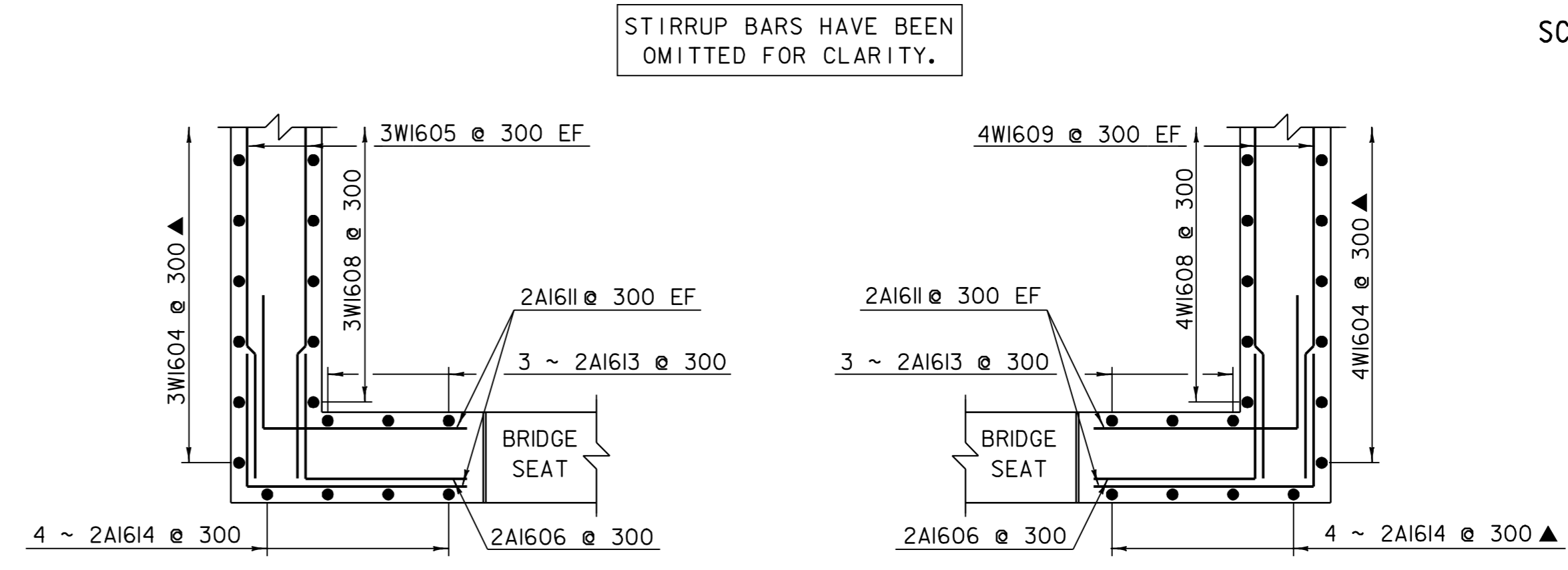
ABUTMENT #2 SECTION A
SCALE: 1:25

ABUTMENT #2 ELEVATION A
SCALE: 1:25



CORNER DETAILS BELOW BRIDGE SEAT
SCALE: 1:25

SECTION A-A



CORNER DETAILS ABOVE BRIDGE SEAT
SCALE: 1:25
SECTION B-B

NOTES

1. NF = NEAR FACE
2. FF = FAR FACE
3. EF = EACH FACE
4. ▲ = CUT TO FIT IN FIELD
5. 80 CLEAR UNLESS OTHERWISE SPECIFIED ON THE PLANS
6. ALL LAPS NOT DETAILED SHALL BE 660 (MIN)
7. 3000 MAX. WEEPHOLE SPACING
8. SEE SHEET 35 FOR FOOTING REINFORCING PLAN.

| | |
|---|------------------------|
| SHEET NAME: ABUTMENT #2 ELEVATION | |
| PROJECT NAME: WESTFORD | HIGHWAY NO.: TH 4 |
| PROJECT NUMBER: TH2 9436 | BRIDGE NO.: 2 |
| | OVER: ROGERS BROOK |
| FILE NAME: 94J122\Structures\sj122sup.dgn | PLOT DATE: 22-DEC-2006 |
| PROJECT MANAGER: G.S. ROGERS | DRAWN BY: T. FILLBACH |
| DESIGNED BY: T. FILLBACH | IPARM NAME: sj122ev2.1 |
| BRIDGE SHEET NUMBER: | SHEET 37 OF 56 |

| REVISION | DATE | BY | CHK'D | DESCRIPTION |
|----------|------------|-----|-------|--|
| Δ | 06/27/2005 | GFR | CWC | ABUTMENTS MODIFIED DUE TO UPDATED LEDGE INFORMATION. |