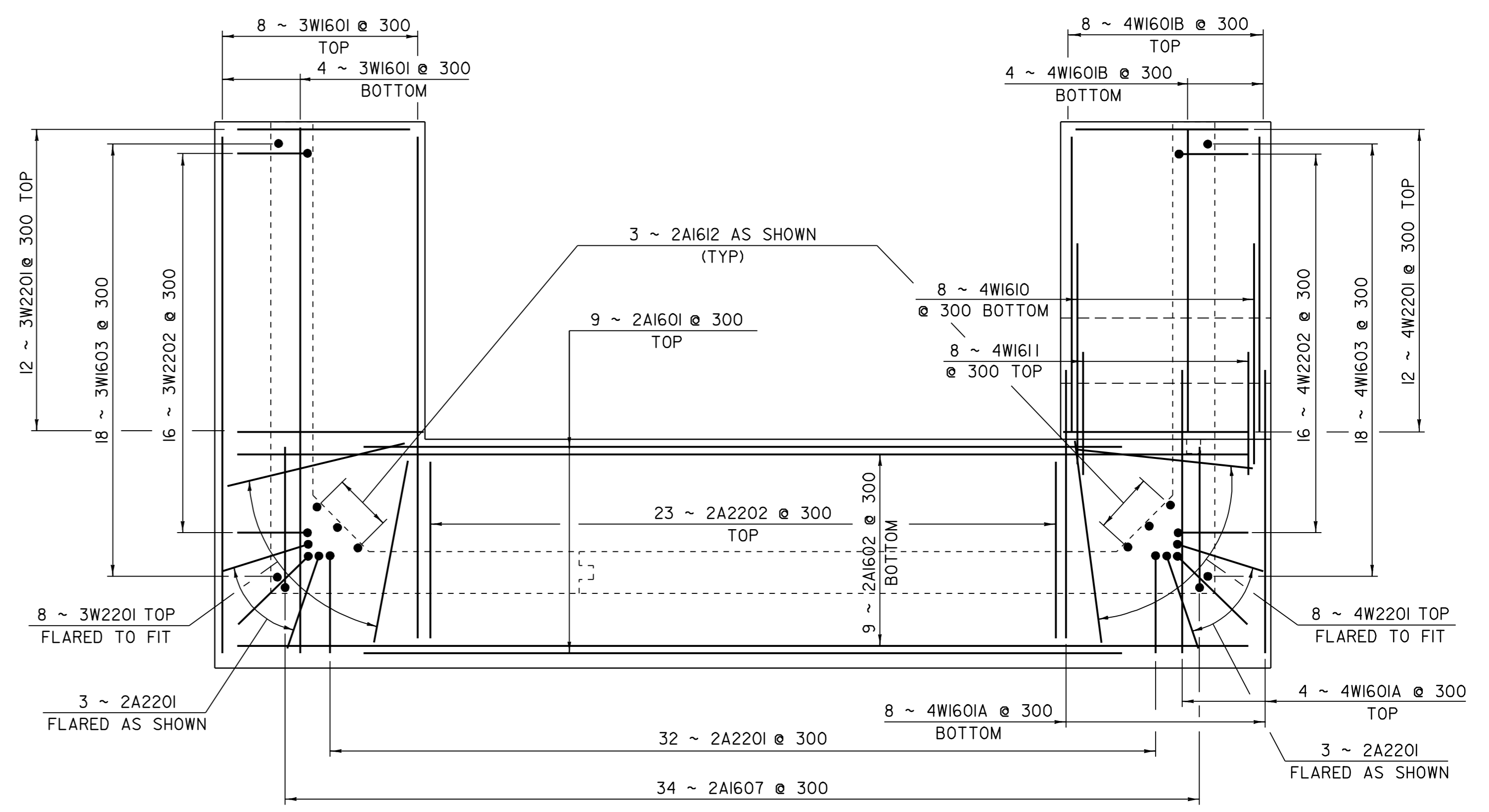


**ABUTMENT #1 REINFORCING PLAN**  $\Delta$   
SCALE: 1:40



**ABUTMENT #2 REINFORCING PLAN**  $\Delta$   
SCALE: 1:40

**NOTES**

1. NF = NEAR FACE
2. FF = FAR FACE
3. EF = EACH FACE
4.  $\Delta$  = CUT TO FIT IN FIELD
5. 80 CLEAR UNLESS OTHERWISE SPECIFIED ON THE PLANS
6. ALL LAPS NOT DETAILED SHALL BE 660



SHEET NAME: <b>FOOTING REINFORCING</b>	
PROJECT NAME: <b>WESTFORD</b>	HIGHWAY NO.: <b>TH 4</b>
PROJECT NUMBER: <b>TH2 9436</b>	BRIDGE NO.: <b>2</b>
	OVER: <b>ROGERS BROOK</b>
FILE NAME: 94J122\Structures\sj122sup.dgn	PLOT DATE: <b>22-DEC-2006</b>
PROJECT MANAGER: <b>R. R. WHITCOMB</b>	DRAWN BY: <b>T. FILLBACH</b>
DESIGNED BY: <b>T. FILLBACH</b>	IPARM NAME: <b>sj122ftg.1</b>
BRIDGE SHEET NUMBER:	SHEET <b>35</b> OF <b>56</b>

REVISION	DATE	BY	CHK'D	DESCRIPTION
$\Delta$	06/27/2005	GFR	CWC	ABUTMENTS MODIFIED DUE TO UPDATED LEDGE INFORMATION.