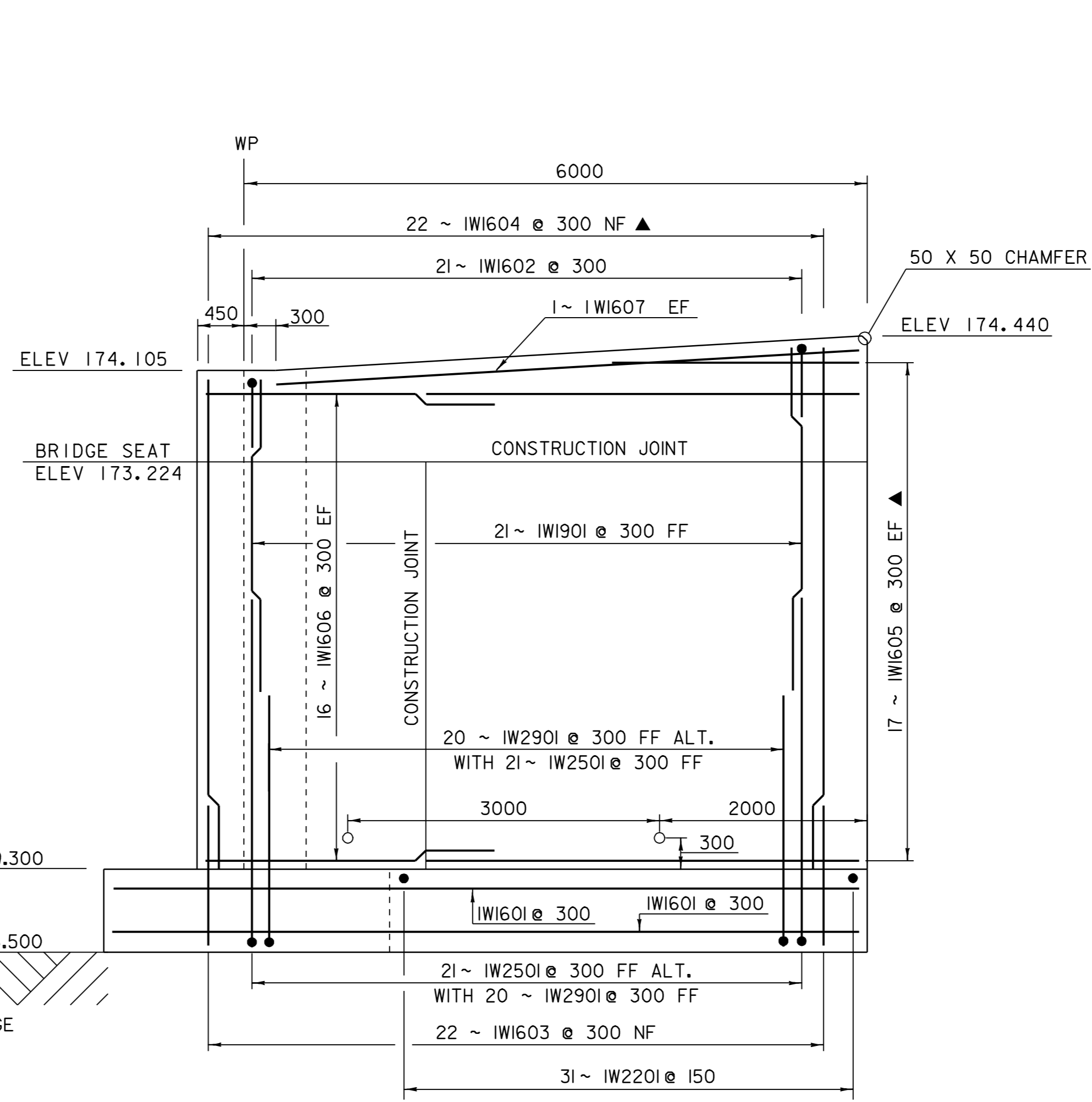
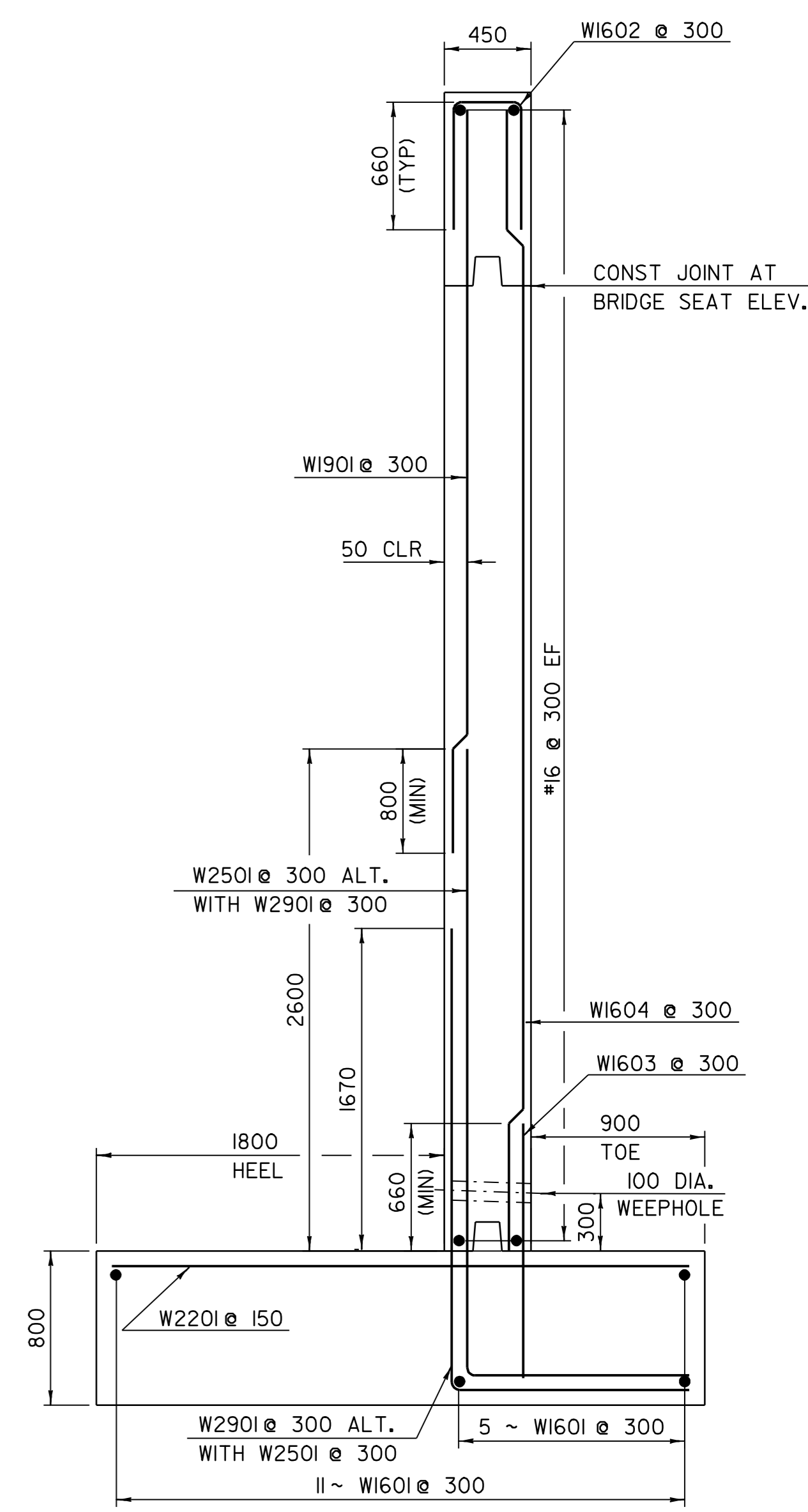


WINGWALL #2 ELEVATION
 0 1 2 3 4
 SCALE = 1:40



WINGWALL #1 ELEVATION
 0 1 2 3 4
 SCALE = 1:40



WINGWALL TYPICAL SECTION
 (WINGWALL #1 AND #2 ARE SIMILAR)
 0 1 2
 SCALE = 1:25

NOTES

1. NF = NEAR FACE
2. FF = FAR FACE
3. EF = EACH FACE
4. ▲ = CUT TO FIT IN FIELD
5. 80 CLEAR UNLESS OTHERWISE SPECIFIED ON THE PLANS
6. 3000 MAX. WEEPHOLE SPACING
7. ALL LAPS NOT DETAILED SHALL BE 660 (MIN)
8. SEE SHEET 33 FOR CORNER DETAILS.

SHEET NAME: WW 1 & WW 2 ELEVATIONS	
PROJECT NAME: WESTFORD	HIGHWAY NO.: TH 4
PROJECT NUMBER: TH2 9436	BRIDGE NO.: 2
	OVER: ROGERS BROOK
FILE NAME: 94J122\Structures\sj122sup.dgn	PLOT DATE: 22-DEC-2006
PROJECT MANAGER: R. R. WHITCOMB	DRAWN BY: T. FILLBACH
DESIGNED BY: T. FILLBACH	IPARM NAME: sj122wwl.1
BRIDGE SHEET NUMBER:	SHEET 34 OF 56

REVISION	DATE	BY	CHK'D	DESCRIPTION
△	06/27/2005	GFR	CWC	ABUTMENTS MODIFIED DUE TO UPDATED LEDGE INFORMATION.