

CONSTRUCT DRIVES
 STA 1+023 RT
 STA 1+034 RT
 STA 1+037 LT
 STA 1+133 LT
 STA 1+134 RT

HEAVY DUTY STEEL BEAM GUARD RAIL
 STA 1+078.6 LT - STA 1+086 LT
 STA 1+095.6 LT - STA 1+112.1 LT
 STA 9+012.2 LT - STA 1+086 RT
 STA 1+095.6 RT - STA 1+113.3 RT

BRIDGE RAIL
 HEAVY DUTY STEEL BEAM RAIL
 WITH HAND RAIL
 STA 1+086 RT - STA 1+095.6 RT
 STA 1+086 LT - STA 1+095.6 LT

RELOCATE MAILBOX
 STA 1+139 RT

MANUFACTURED TERMINAL SECTION (TANGENT)
 STA 1+060.8 - 1+078.6 LT

CURVE #2
 RADIUS: 150
 DELTA: 7°33'45" R
 LENGTH: 19.799
 TANGENT: 9.914
 CHORD: 19.785
 ORDINATE: 0.327
 EXTERNAL: 0.327
 BANK = NORMAL

CONSTRUCT DITCHES
 STA 1+025 LT - STA 1+030 LT
 STA 1+044 LT - STA 1+075 LT
 STA 1+043 RT - STA 9+025 RT

ANCHOR FOR STEEL BEAM RAIL
 STA 1+110.5 LT
 STA 1+111.4 RT
 STA 9+010.0 LT

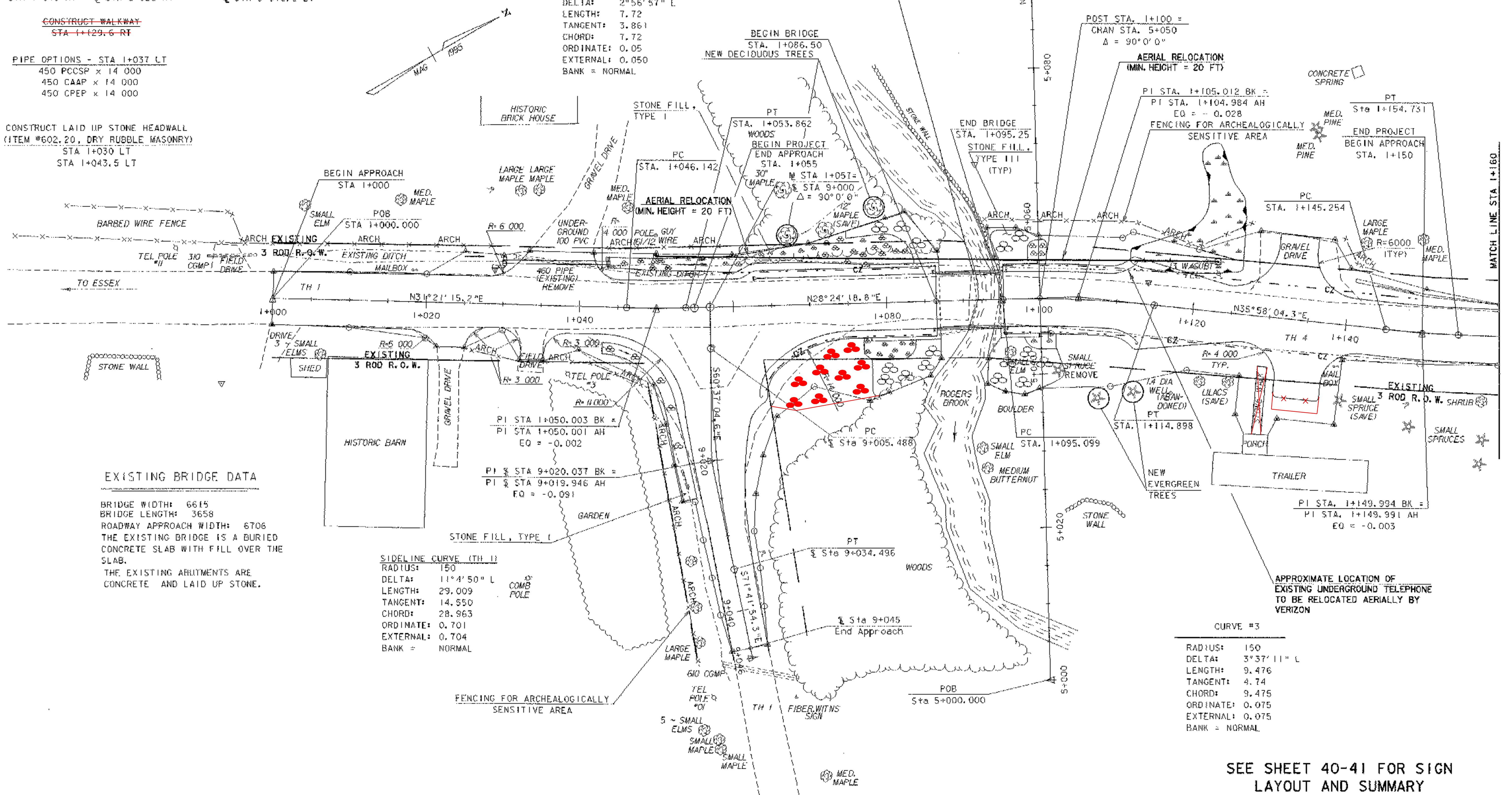
DECIDUOUS TREES
 STA 1+067.3 LT (+/-) O/S 9.1 m (+/-)
 STA 1+079.5 LT (+/-) O/S 12.5 m (+/-)

CURVE #1
 RADIUS: 150
 DELTA: 2°56'57" L
 LENGTH: 7.72
 TANGENT: 3.861
 CHORD: 7.72
 ORDINATE: 0.05
 EXTERNAL: 0.050
 BANK = NORMAL

CONSTRUCT WALKWAY
 STA 1+129.6 RT

PIPE OPTIONS - STA 1+037 LT
 450 PCCSP x 14 000
 450 CAAP x 14 000
 450 CPEP x 14 000

CONSTRUCT LAID UP STONE HEADWALL
 (ITEM #602, 20, DRY RUBBLE MASONRY)
 STA 1+030 LT
 STA 1+043.5 LT

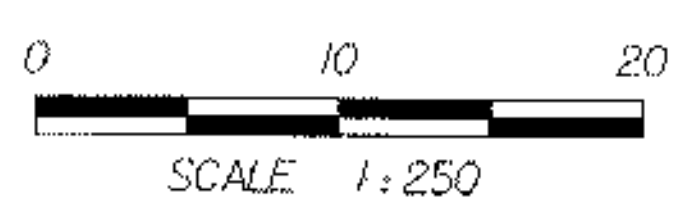


EXISTING BRIDGE DATA
 BRIDGE WIDTH: 6615
 BRIDGE LENGTH: 3658
 ROADWAY APPROACH WIDTH: 6706
 THE EXISTING BRIDGE IS A BURIED CONCRETE SLAB WITH FILL OVER THE SLAB.
 THE EXISTING ABUTMENTS ARE CONCRETE AND LAID UP STONE.

SIDELINE CURVE (TH 1)
 RADIUS: 150
 DELTA: 11°4'50" L
 LENGTH: 29.009
 TANGENT: 14.550
 CHORD: 28.963
 ORDINATE: 0.701
 EXTERNAL: 0.704
 BANK = NORMAL

CURVE #3
 RADIUS: 150
 DELTA: 3°37'11" L
 LENGTH: 9.476
 TANGENT: 4.74
 CHORD: 9.475
 ORDINATE: 0.075
 EXTERNAL: 0.075
 BANK = NORMAL

SEE SHEET 40-41 FOR SIGN LAYOUT AND SUMMARY



SHEET NAME: LAYOUT SHEET #1	
PROJECT NAME: WESTFORD	HIGHWAY NO.: TH 4
PROJECT NUMBER: TH2 9436	BRIDGE NO.: 2
FILE NAME: /PW/94122/s1122bdr.dgn	OVER: ROGERS BROOK
PROJECT MANAGER: R. R. WHITCOMB	PLOT DATE: 25-MAR-2005
DESIGNED BY: C. CARLSON	DRAWN BY: STRI
BRIDGE SHEET NUMBER:	IPARM NAME: s1122tbl1
	SHEET 8 OF 56