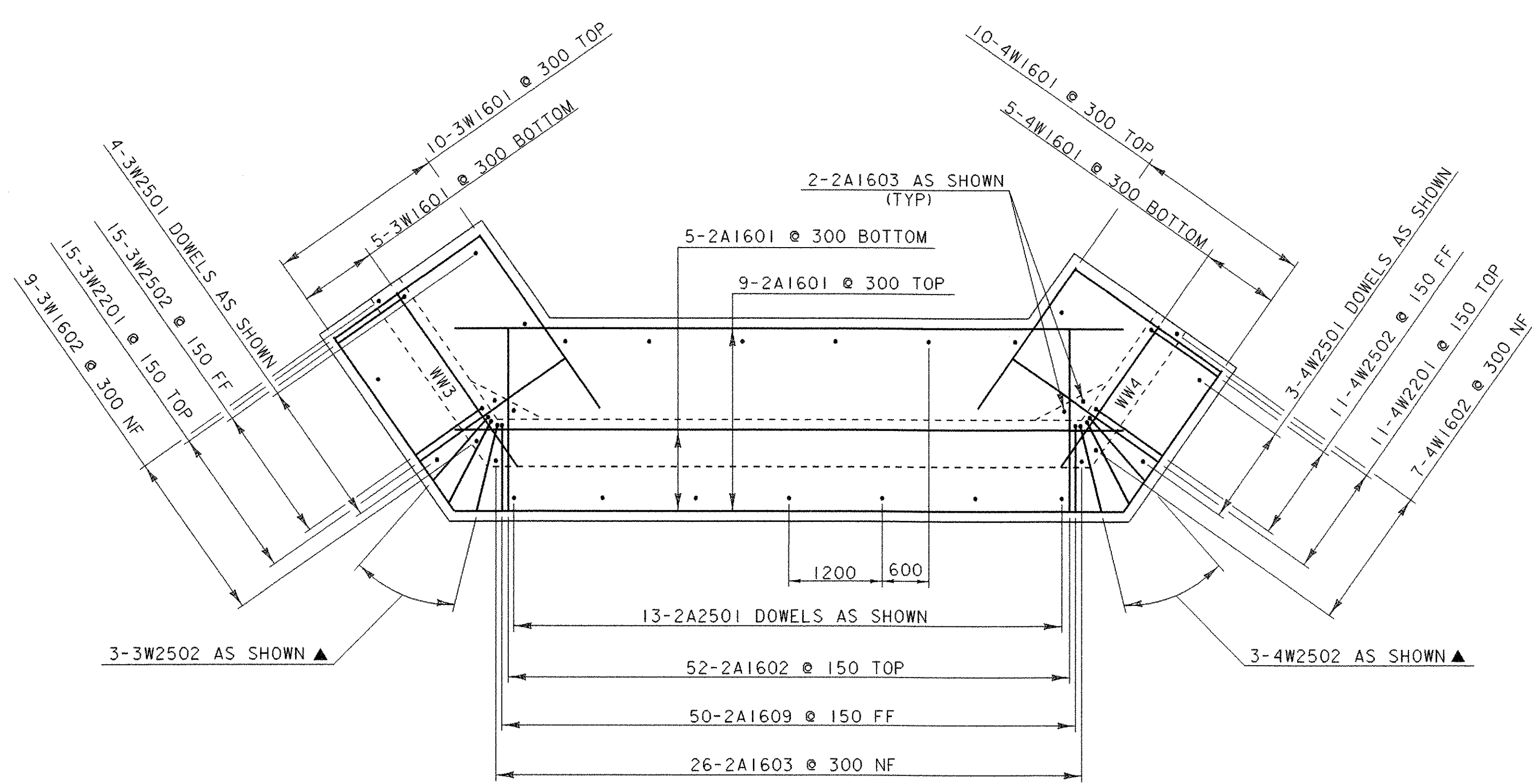
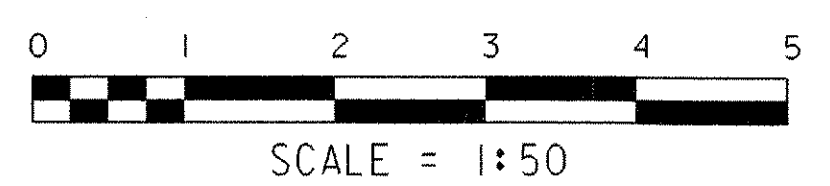
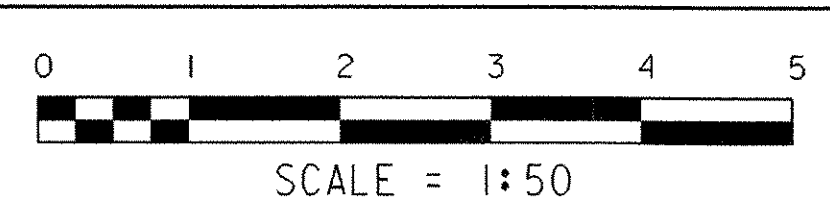


ABUTMENT NO. 1 PLAN

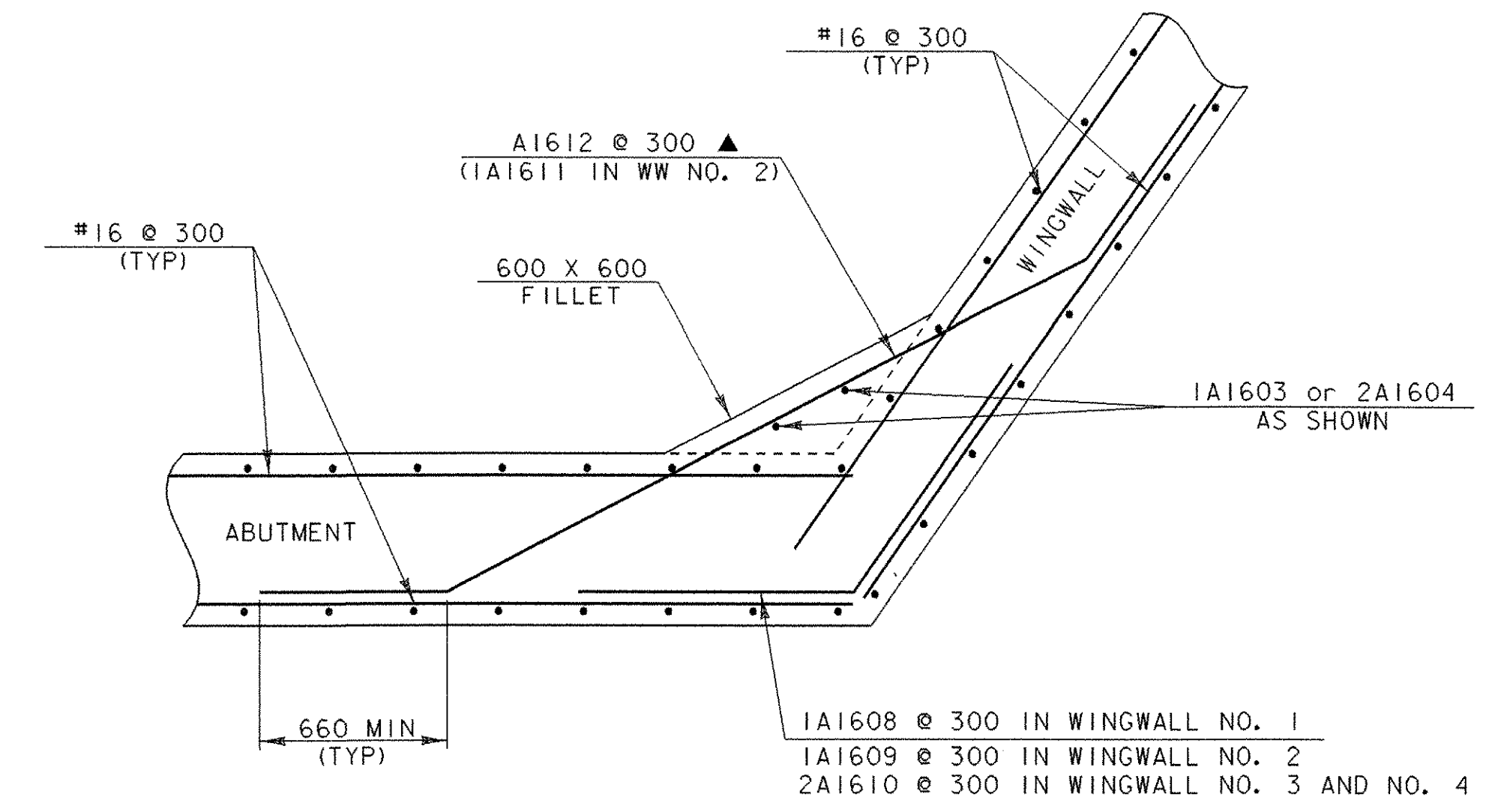


ABUTMENT NO. 2 PLAN



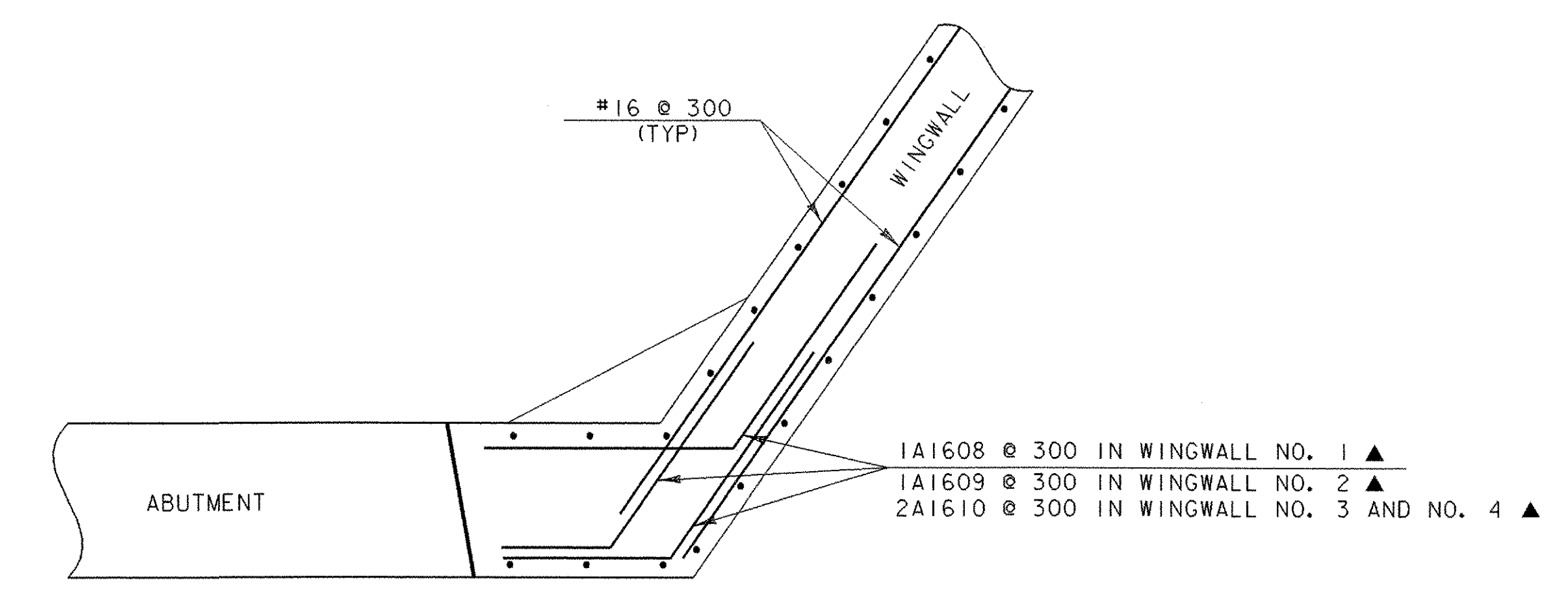
NOTE:

DUE TO THE LOCATION OF THE TEMPORARY BRIDGE, WINGWALL 1 MAY HAVE TO BE CONSTRUCTED IN TWO STAGES. IF THE CONTRACTOR ELECTS TO INSTALL THE TEMPORARY BRIDGE AS SHOWN IN THE PLANS, MECHANICAL BAR CONNECTORS WILL BE NECESSARY. SEE GENERAL NOTES #14 AND #15 FOR MORE INFORMATION.



CORNER DETAILS BELOW BRIDGE SEAT (TYP)

NTS



CORNER DETAILS ABOVE BRIDGE SEAT (TYP)

NTS

NOTE:

NF = NEAR FACE
 FF = FAR FACE
 EF = EACH FACE
 ▲ = CUT TO FIT IN FIELD
 75 CLR. UNLESS OTHERWISE SPECIFIED ON THE PLANS.
 ALL LAPS 660 UNLESS OTHERWISE SPECIFIED ON THE PLANS.

PROJECT: GRANVILLE	PROJECT NO.: BRO 1444 (34)
DESIGN FILE NAME: 94j100/structures/sj100sub.dgn	PLOT DATE: 03-MAR-2006
IPARM FILE NAME: sj100ftg.i	DRAWN BY: N. WARK
DESIGNED BY: N. WARK	CHECKED BY: K. HIGGINS
SQUAD LEADER: C.P. WILLIAMS	FOOTING AND CORNER DETAILS
	SHEET: 19 OF 39