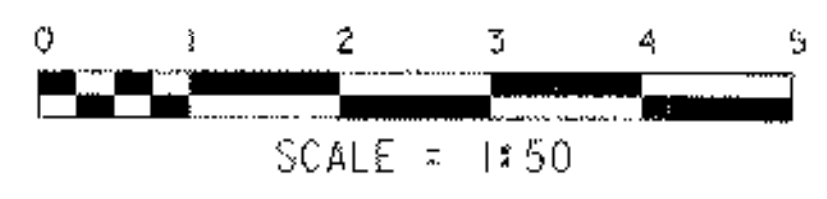
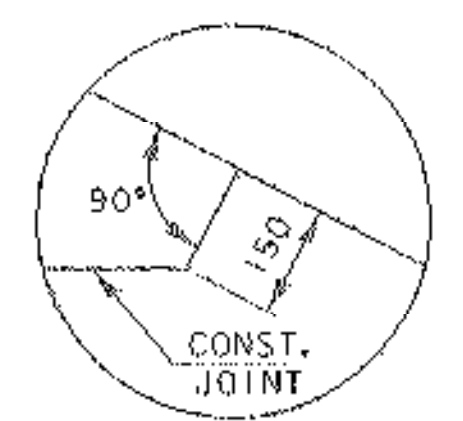


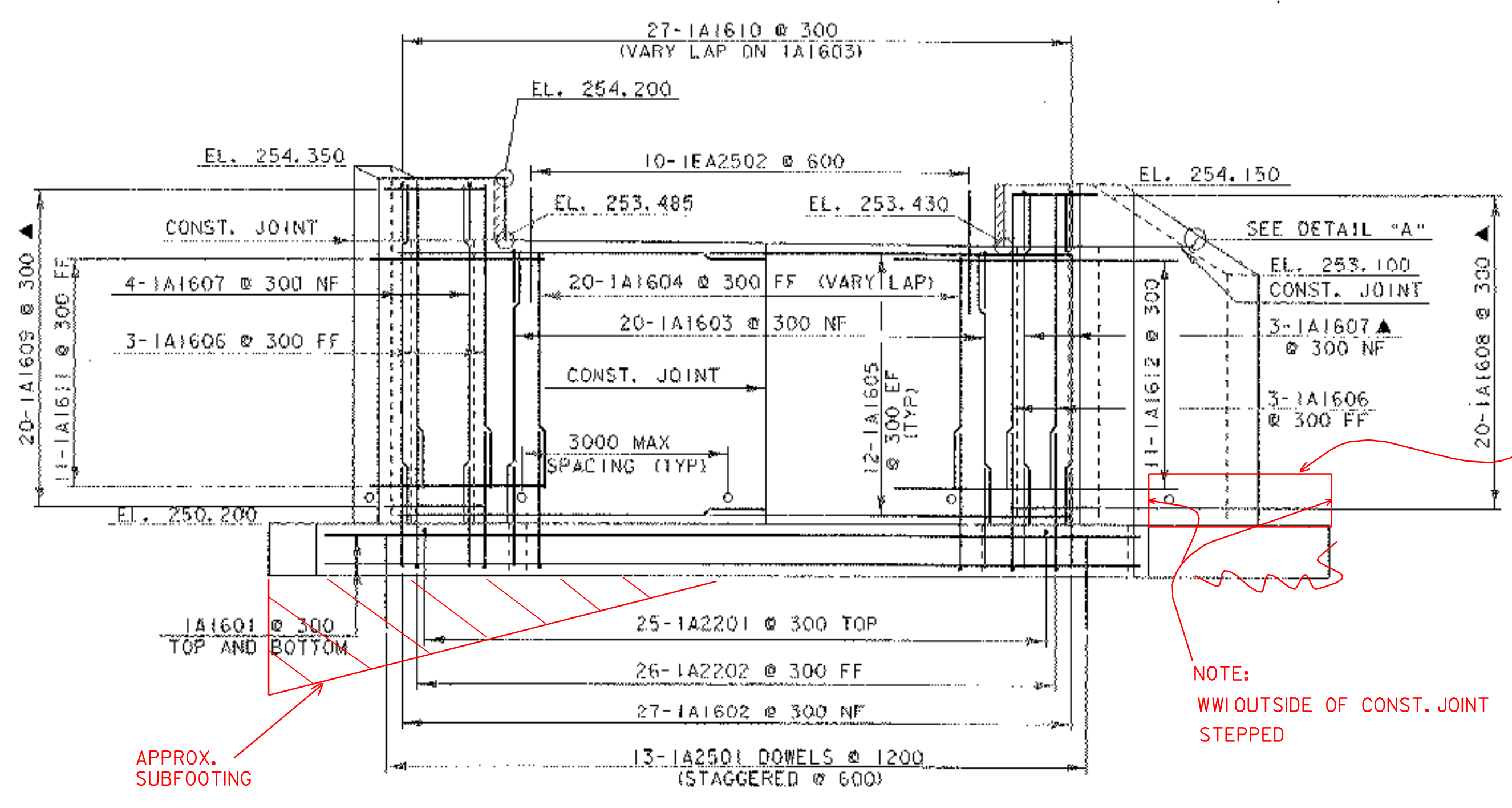
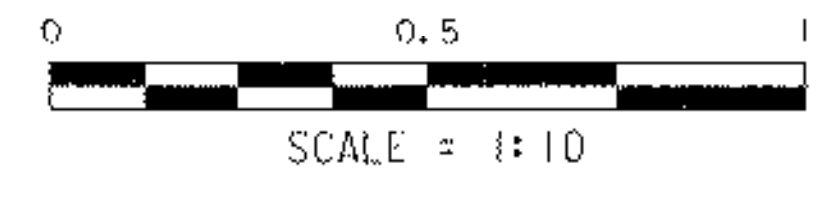
**ABUTMENT NO. 1 PLAN**



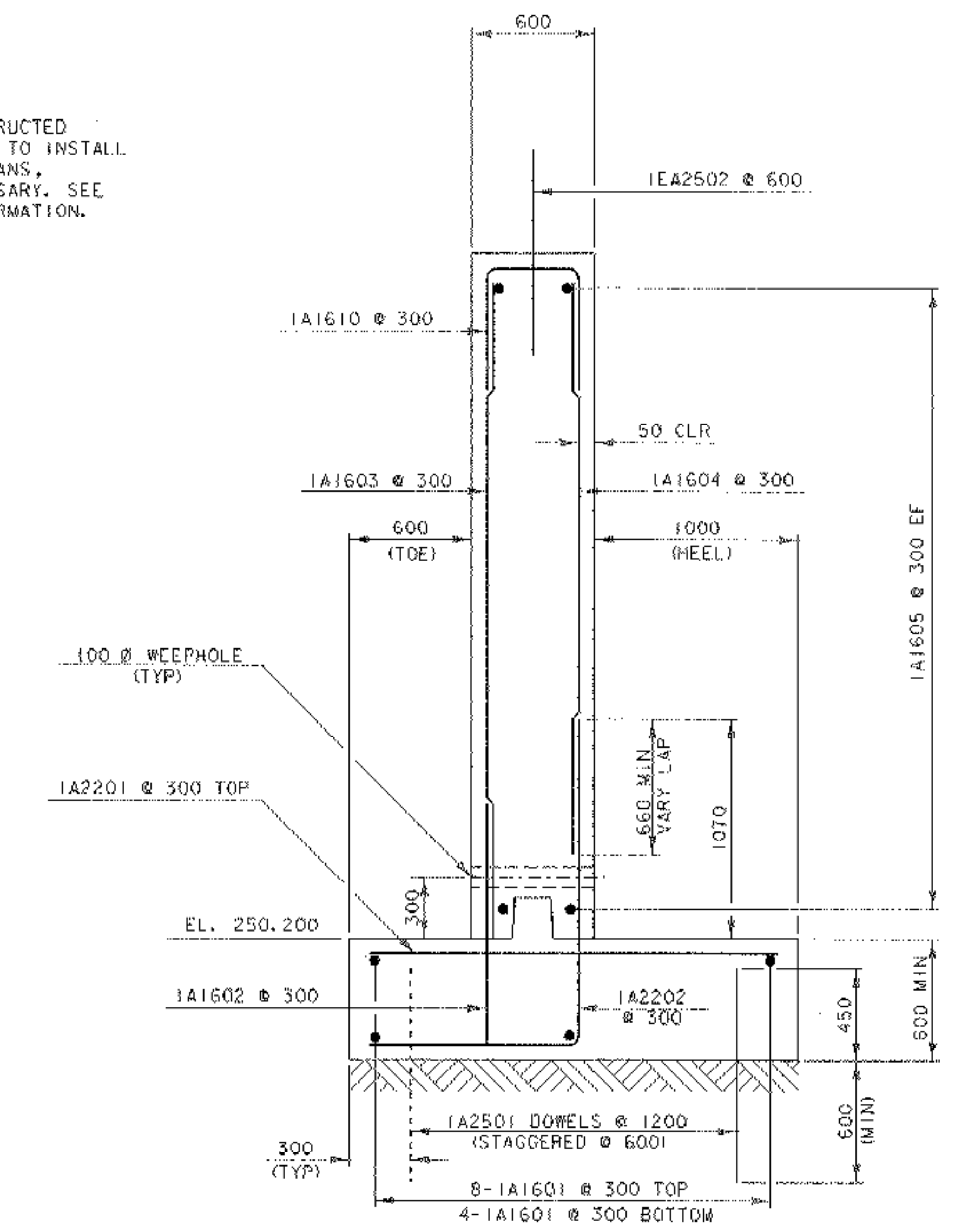
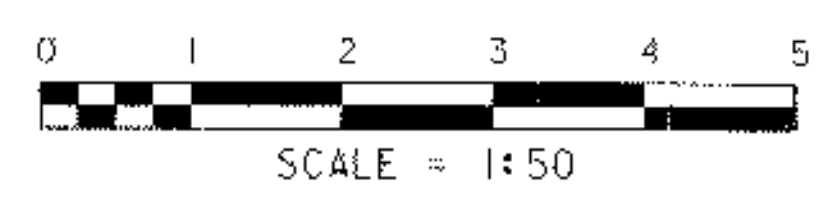
**NOTE:**  
 DUE TO THE LOCATION OF THE TEMPORARY BRIDGE, WINGWALL 1 MAY HAVE TO BE CONSTRUCTED IN TWO STAGES. IF THE CONTRACTOR ELECTS TO INSTALL THE TEMPORARY BRIDGE AS SHOWN IN THE PLANS, MECHANICAL BAR CONNECTORS WILL BE NECESSARY. SEE GENERAL NOTES #14 AND #15 FOR MORE INFORMATION.



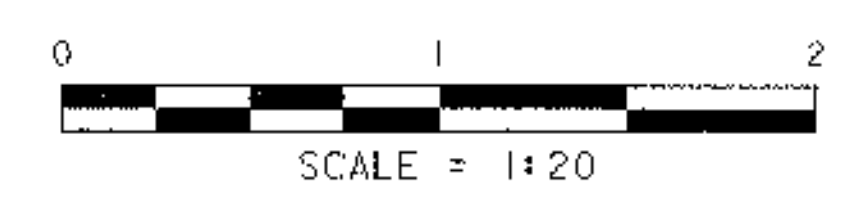
**DETAIL "A"**



**ABUTMENT NO. 1 ELEVATION**



**ABUTMENT NO. 1 TYPICAL SECTION**



**NOTE:**  
 NF = NEAR FACE  
 FF = FAR FACE  
 EF = EACH FACE  
 ▲ = CUT TO FIT IN FIELD  
 75 CLR. UNLESS OTHERWISE SPECIFIED ON THE PLANS.  
 ALL LAPS 660 UNLESS OTHERWISE SPECIFIED ON THE PLANS.

PROJECT: <b>GRANVILLE</b>	PROJECT NO.: <b>BRO 1444 (34)</b>
DESIGN FILE NAME: 94100/structures/sj100sub.dgn	PLOT DATE: 03-MAR-2006
IPARK FILE NAME: sj100ab1.i	DRAWN BY: N. WARK
DESIGNED BY: N. WARK	CHECKED BY: K. HIGGINS
SQUAD LEADER: C. P. WILLIAMS	SHEET: 17 OF 39
ABUTMENT NO. 1 DETAILS	