

BRIDGE RAILING - HEAVY DUTY STEEL  
BEAM/ FASCIA MOUNTED  
STA 1+019.400 TO STA 1+032.600 RT  
STA 1+020.300 TO STA 1+033.700 LT

(6) EVERGREEN TREES (B/B ABIES BALSAMEA-3000 mm)  
STA 1+031 TO STA 1+052.600 LT  
(AS DIRECTED BY RESIDENT ENGINEER)

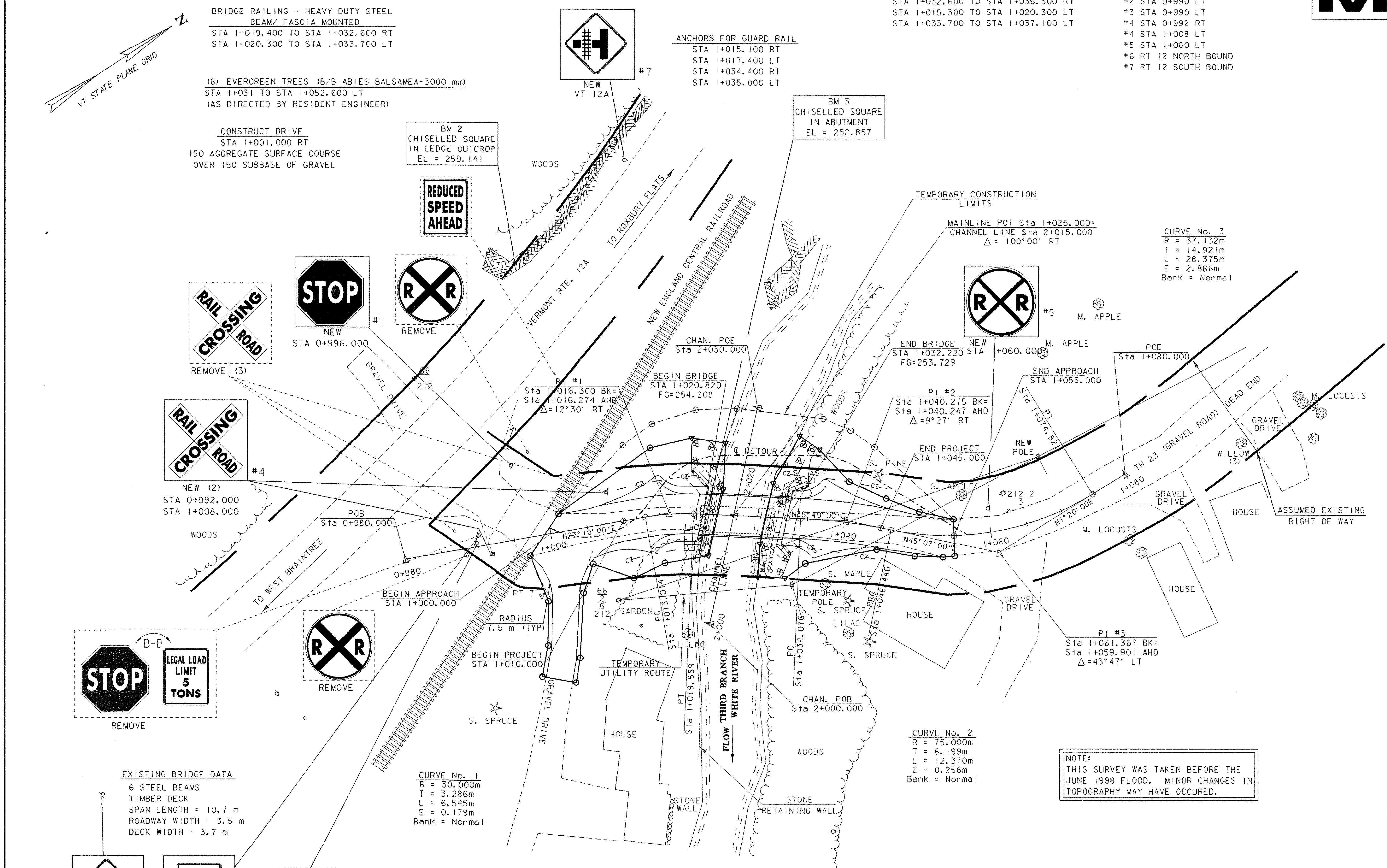
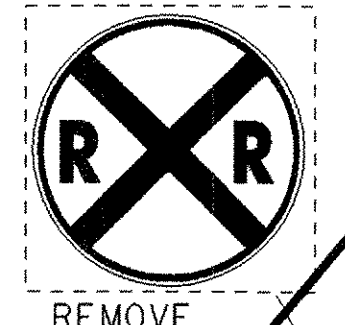
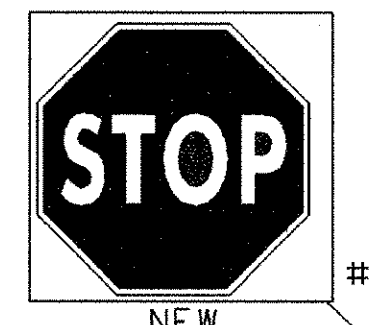
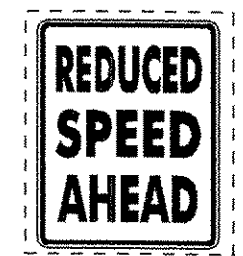
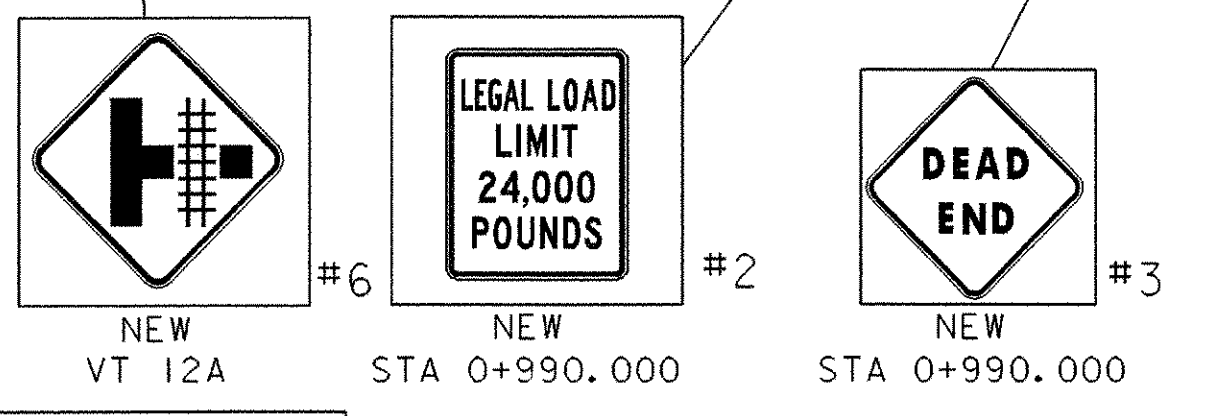
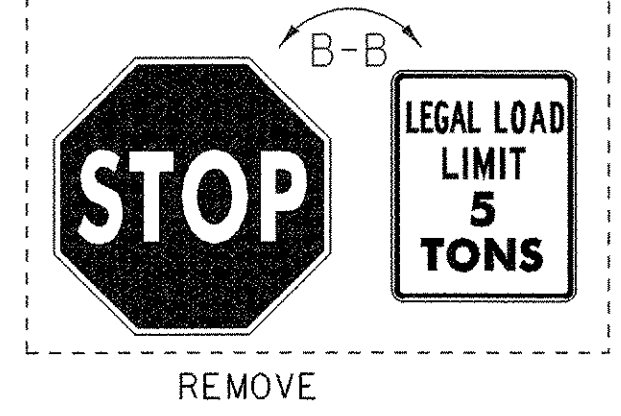
CONSTRUCT DRIVE  
STA 1+001.000 RT  
150 AGGREGATE SURFACE COURSE  
OVER 150 SUBBASE OF GRAVEL

BM 2  
CHISELLED SQUARE  
IN LEDGE OUTCROP  
EL = 259.141

ANCHORS FOR GUARD RAIL  
STA 1+015.100 RT  
STA 1+017.400 LT  
STA 1+034.400 RT  
STA 1+035.000 LT

HEAVY DUTY STEEL BEAM GUARD RAIL  
STA 1+013.000 TO STA 1+019.400 RT  
STA 1+032.600 TO STA 1+036.500 RT  
STA 1+015.300 TO STA 1+020.300 LT  
STA 1+033.700 TO STA 1+037.100 LT

TRAFFIC SIGN PLACEMENT  
#1 STA 0+996 LT  
#2 STA 0+990 LT  
#3 STA 0+990 LT  
#4 STA 0+992 RT  
#4 STA 1+008 LT  
#5 STA 1+060 LT  
#6 RT 12 NORTH BOUND  
#7 RT 12 SOUTH BOUND



CURVE No. 3  
R = 37.132m  
T = 14.921m  
L = 28.375m  
E = 2.886m  
Bank = Normal

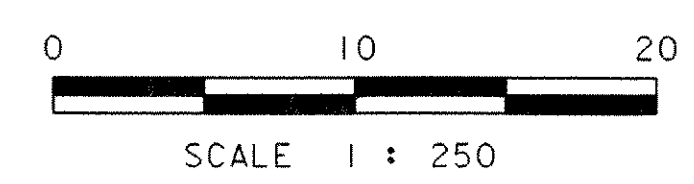
CURVE No. 2  
R = 75.000m  
T = 6.199m  
L = 12.370m  
E = 0.256m  
Bank = Normal

EXISTING BRIDGE DATA  
6 STEEL BEAMS  
TIMBER DECK  
SPAN LENGTH = 10.7 m  
ROADWAY WIDTH = 3.5 m  
DECK WIDTH = 3.7 m

CURVE No. 1  
R = 30.000m  
T = 3.286m  
L = 6.545m  
E = 0.179m  
Bank = Normal

NOTE:  
THIS SURVEY WAS TAKEN BEFORE THE  
JUNE 1998 FLOOD. MINOR CHANGES IN  
TOPOGRAPHY MAY HAVE OCCURRED.

LAYOUT



DATUM  
VERTICAL NAVD 88  
HORIZONTAL NAD 83/92

PROJECT: <b>GRANVILLE</b>	PROJECT NO. : <b>BRO 1444 (34)</b>
DESIGN FILE NAME: 94j100/structures/sj100bdr.dgn	PLOT DATE: 03-MAR-2006
IPARM FILE NAME: sj100a1	SURVEY DATE: 1/96
SURVEYED BY: L. ORVIS	DRAWN BY: P. ROWE
SQUAD LEADER: C.P. WILLIAMS	SHEET: 7 OF 39
LAYOUT	