

GEODETIC CONTROL INFORMATION



GENERAL LOCATION: West Braintree, 1.9mi (3.1km) north of West Braintree Village 6.9mi (11.1km) northwest of Randolph, and 11.3mi (18.2km) south southwest of Northfield. To reach from the junction of Vermont route 12 and Vermont route 12A in Randolph, proceed northerly along Vermont route 12A for 7.2mi (11.6km) to the mark on right.

To reach from the junction of Vermont route 12A and the road to Warren (Roxbury Mountain Road) in Roxbury Village, proceed south for 7.5mi (12.1km) along route 12A to the mark on left.

To reach from the junction of Vermont route 12A and Thresher road in West Braintree proceed north along route 12A for 0.4mi (0.6km) to the mark on the right. The mark is a State of Vermont survey disk set in the top of a concrete monument 30 cm in diameter, flush with the ground surface.

It is located 94.5ft (28.8m) north northwest of telephone pole 181, 61.5ft (18.7m) south southeast of mile marker 0121/0902/0600, 15.5ft (4.7m) east of the centerline of Vermont route 12A, and 2.5ft (0.8m) west of a fiberglass witness post.

Ownership is the State of Vermont.

"BAINBRIDGE"
(NOT SHOWN)
N = 165967.27882 m
E = 479766.18590 m
Z = 244.23118 m
Survey Disk set into top of
a round concrete monument.

GENERAL LOCATION: West Braintree, 1.4mi (2.3km) north of West Braintree Village, 6.6mi (10.6km) northwest of Randolph, and 11.8mi (19.0km) south southwest of Northfield.

To reach from the junction of Vermont route 12 and Vermont route 12A in Randolph, proceed northerly along route 12A for 6.9mi (11.1km) to the mark on left. To reach from the junction of Vermont route 12A and the road to Warren (Roxbury Mountain Road) in Roxbury Village, proceed 7.8mi (12.6km) south along route 12A to the mark on right.

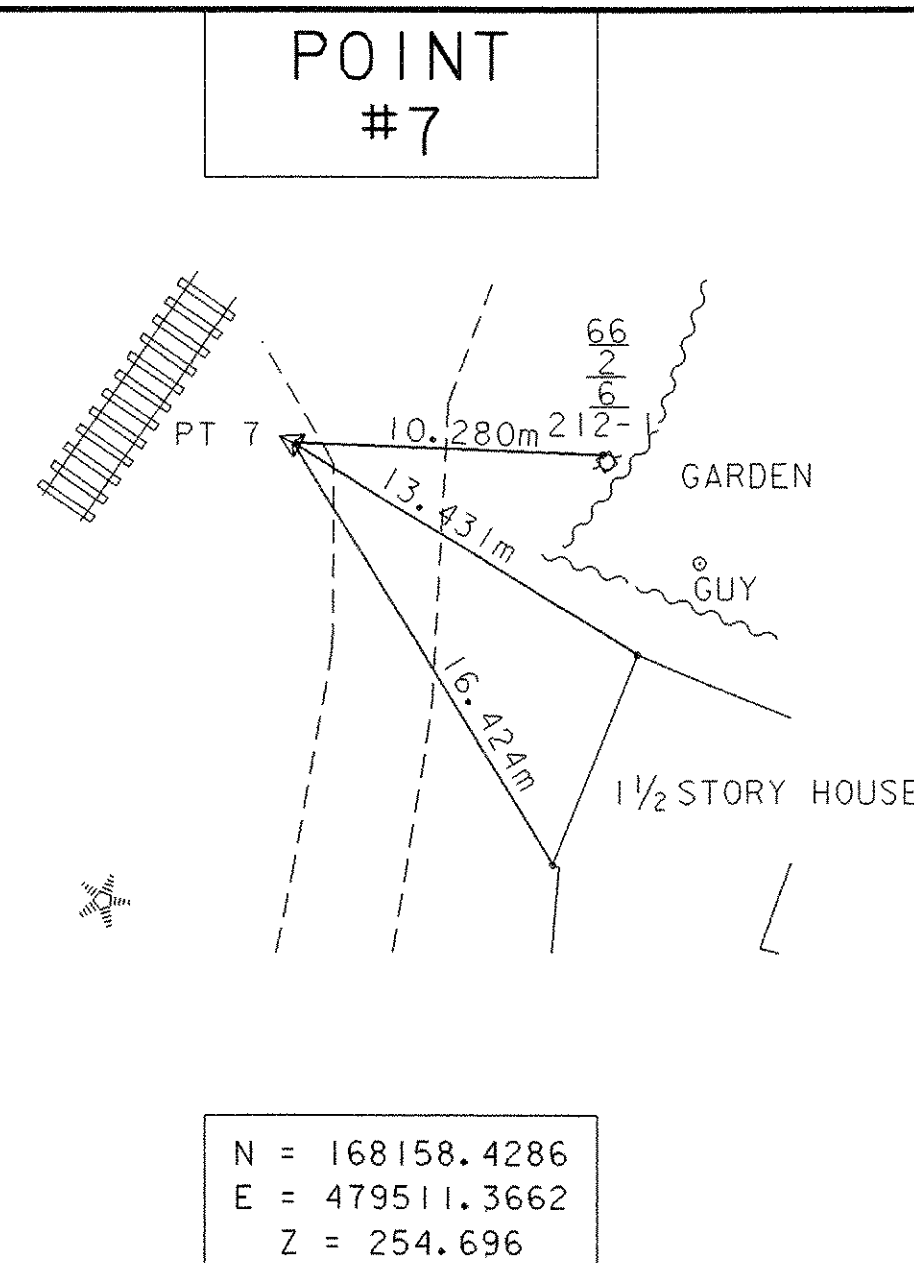
To reach from the junction of Vermont route 12A and Thresher road in West Braintree proceed north for 0.1mi (0.2km) along route 12A to the mark on left. The mark is a State of Vermont survey disk set in the top of a concrete monument 30cm in diameter, flush with the ground surface.

It is located 137ft (41.8m) north of the west end of a 15 inch corrugated metal pipe 35.5ft (10.8m) west of a two cable guardrail, 20.0ft (6.1m) west of the centerline of Vermont route 12A, and 8ft (2.4m) east southeast of a fiberglass witness post.

Ownership is the State of Vermont.

"BRAINDEAD"
(NOT SHOWN)
N = 165521.75231m
E = 479710.27754 m
Z = 244.69942m
Survey Disk is set into the top of
a round concrete monument.

TRAVERSE TIE INFORMATION



NEW ALIGNMENT TIE INFORMATION

POB STA. 1+000.000
N = 168164.0190 m
E = 479504.9940 m

PC STA. 1+013.014
N = 168175.9840 m
E = 479510.1140 m

PI #1
STA. 1+016.300 BK =
STA. 1+016.274 AHD
N = 168179.0046 m
E = 479511.4065 m

PT STA. 1+019.559
N = 168181.6739 m
E = 479513.3222 m

PC STA. 1+034.076
N = 168193.4673 m
E = 479521.7863 m

PI #2
STA. 1+040.275 BK =
STA. 1+040.247 AHD
N = 168198.5036 m
E = 479525.4008 m

PRC STA. 1+046.446
N = 168202.8781 m
E = 479529.7931 m

PI #3
STA. 1+061.367 BK =
STA. 1+059.901 AHD
N = 168213.4073 m
E = 479540.3652 m

PT STA. 1+074.821
N = 168228.3241 m
E = 479540.7125 m

POE STA. 1+080.000
N = 168233.5020 m
E = 479540.8330 m

DATUM

VERTICAL NAVD 88
HORIZONTAL NAD-83 (92)

ALL TIES ARE SHOWN NOT TO SCALE

PROJECT: GRANVILLE	PROJECT NO.: BRO 1444 (34)
DESIGN FILE NAME: /94j100/sj100tie.dgn	PLOT DATE: 03-MAR-2006
IPARM FILE NAME: /94j100/sj100tie.i	SURVEY DATE: 1/96
SURVEYED BY: L. ORVIS	DRAWN BY: D.G. BASSETT
SQUAD LEADER: C.P. WILLIAMS	TIES
	SHEET: 6 OF 39