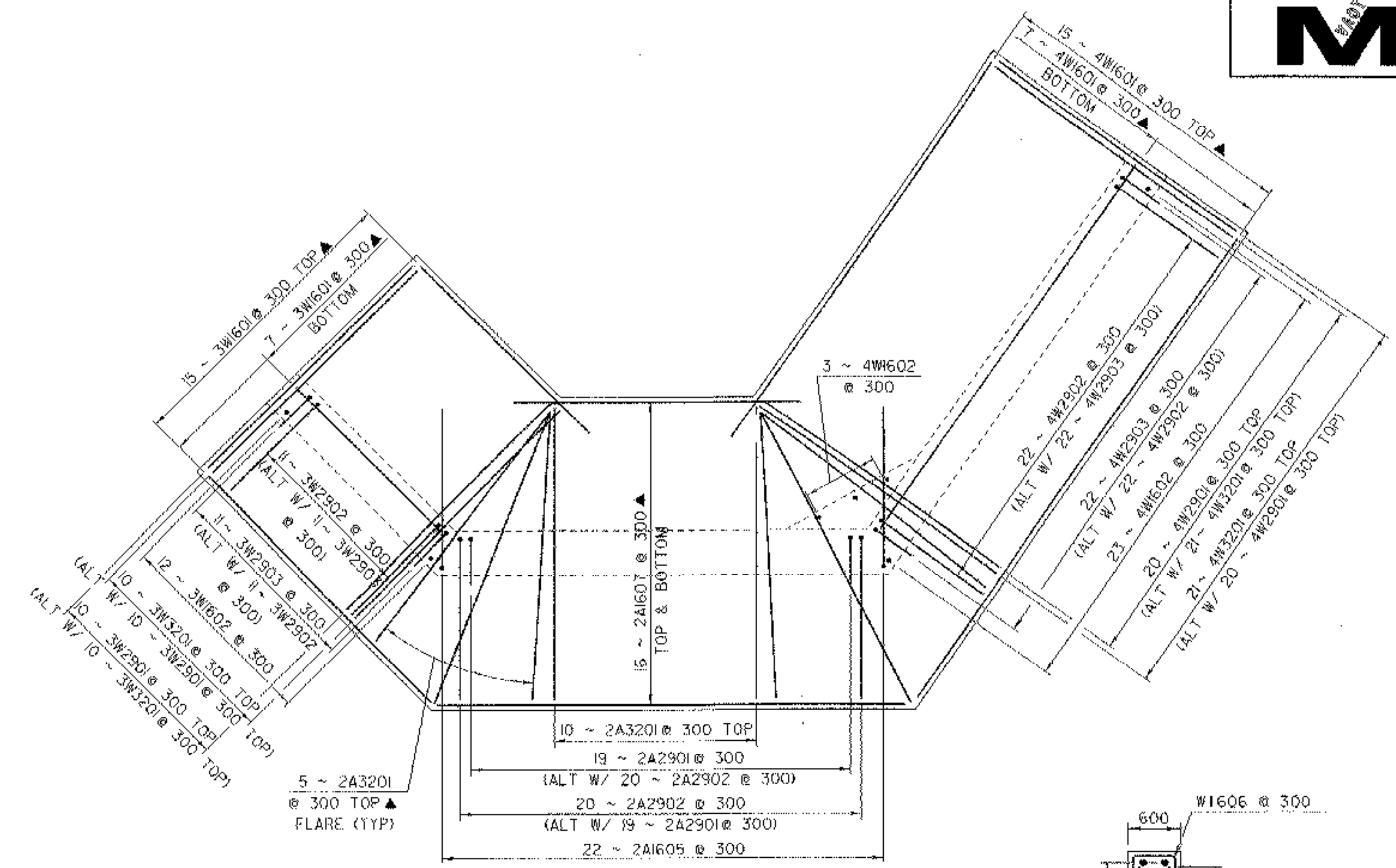
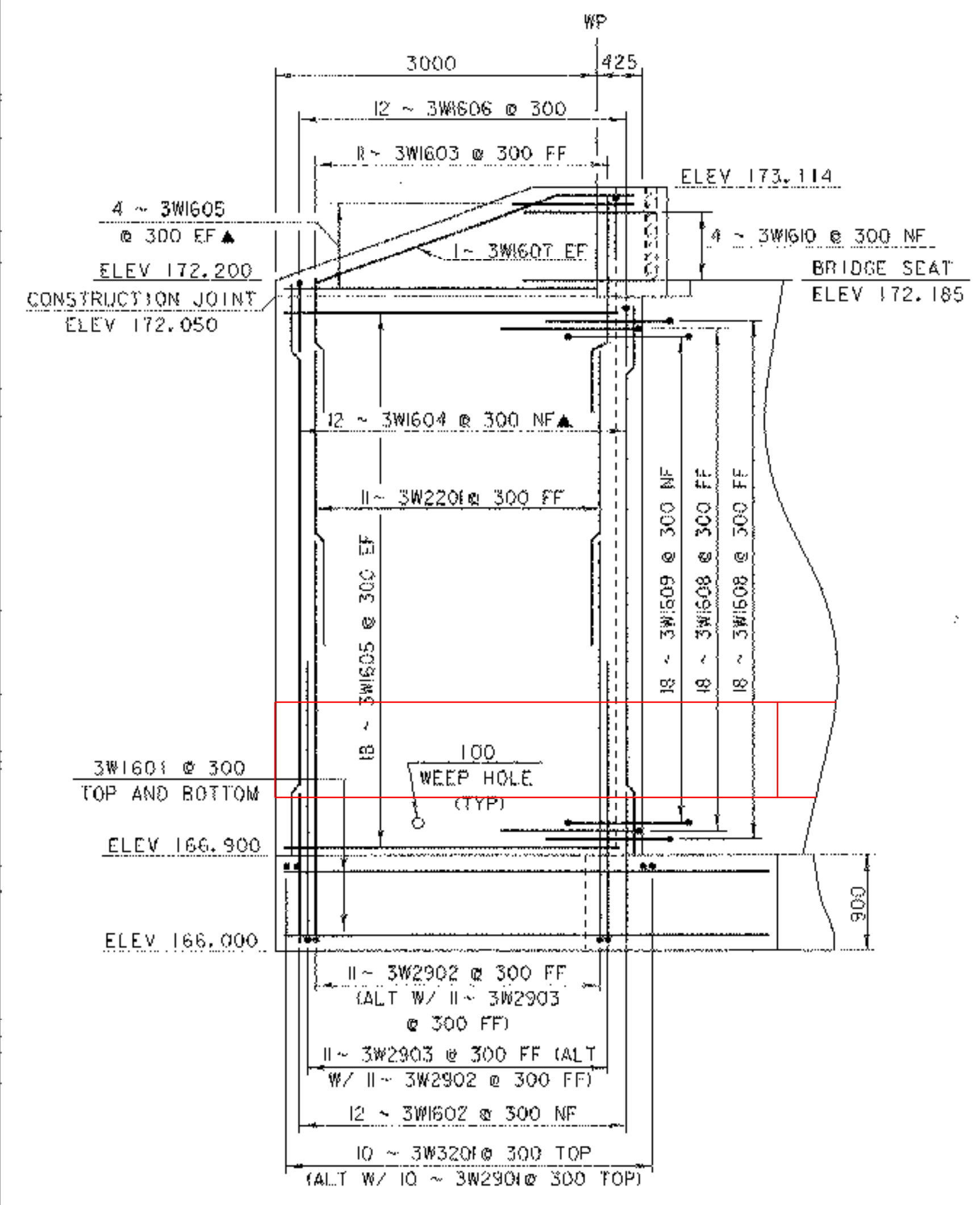


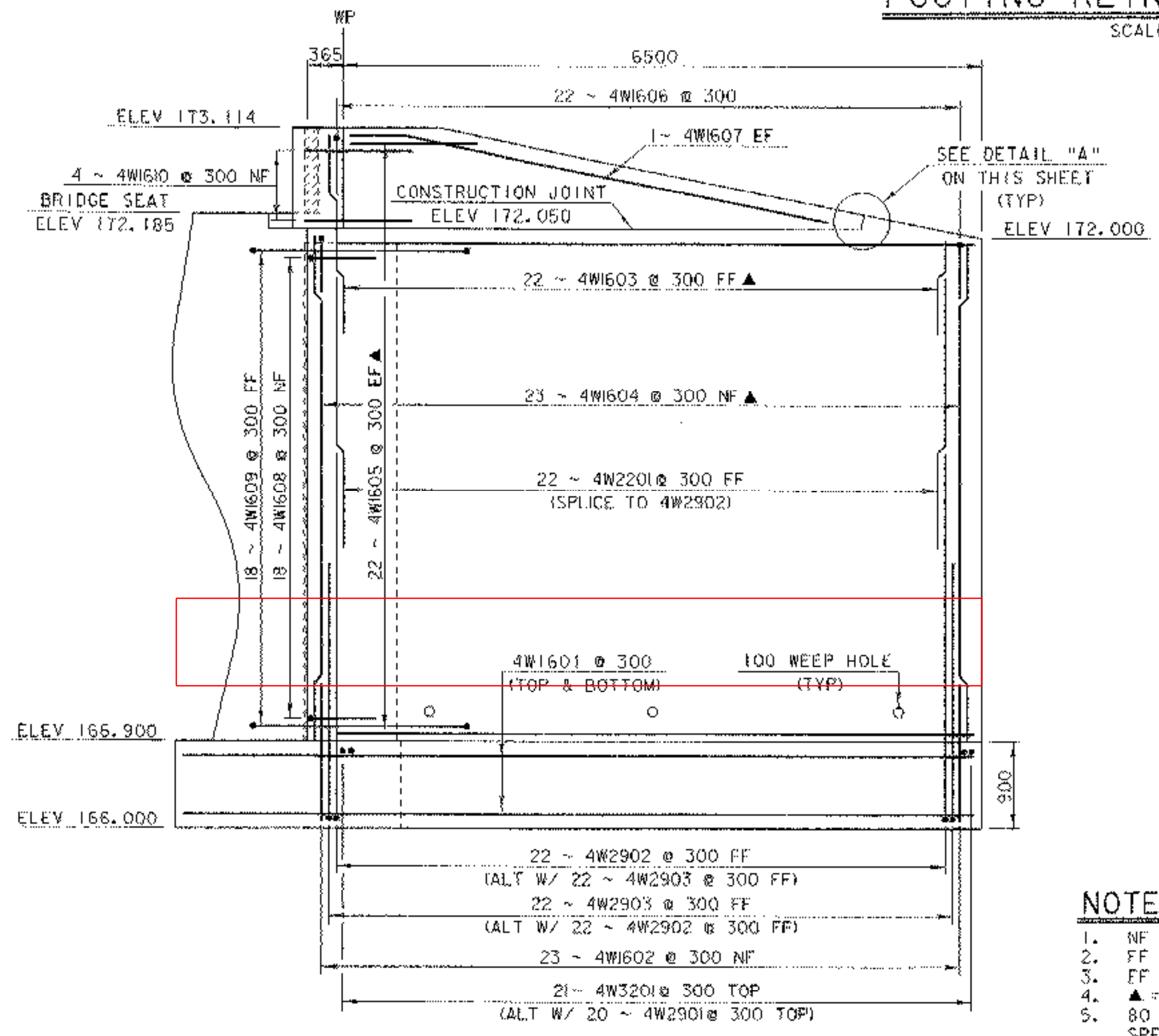
DETAIL "A"
NTS



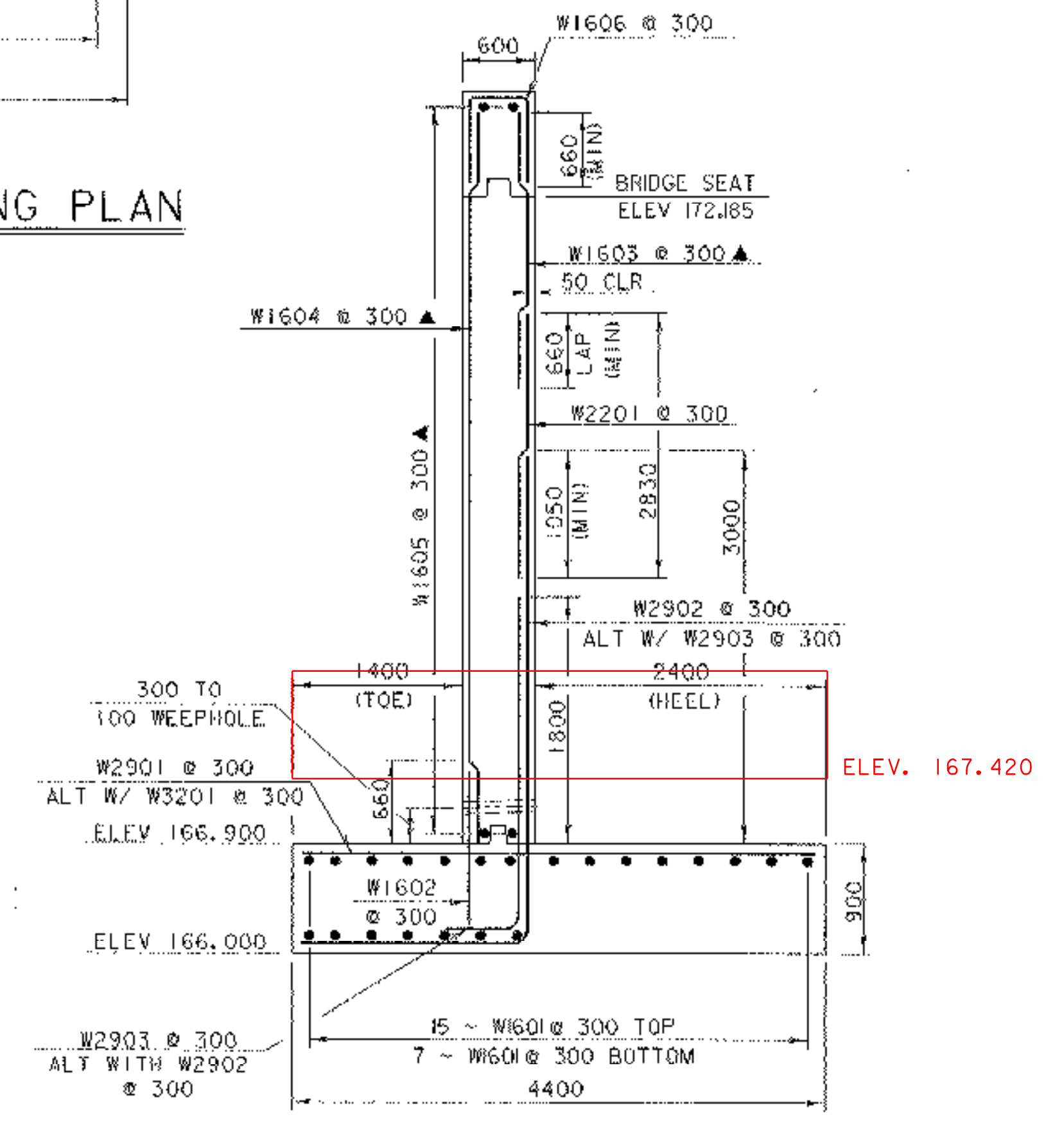
**ABUTMENT #2
FOOTING REINFORCING PLAN**
SCALE: 1:50



WINGWALL #3
SCALE: 1:40



WINGWALL #4
SCALE: 1:40



WINGWALL 3 & 4 TYPICAL
SCALE: 1:40

- NOTES:**
1. NF = NEAR FACE
 2. FF = FAR FACE
 3. EF = EACH FACE
 4. ▲ = CUT TO FIT IN FIELD
 5. 80 CLEAR UNLESS OTHERWISE SPECIFIED ON THE PLANS
 6. 3000 MAX WEEP HOLE SPACING
 7. ALL LAPS 660 UNLESS NOTED OTHERWISE
 8. SEE SHEET 28 FOR CORNER DETAILS

SHEET NAME: WINGWALL 3 & 4 DETAILS		
PROJECT NAME: WALLINGFORD	HIGHWAY NO.: TH 60	BRIDGE NO.: 50
PROJECT NUMBER: BRO 1443(31)	OVER: OTTER CREEK	
FILE NAME: /PW/941084/sj084sub.dgn	PLOT DATE: 24-OCT-2005	DRAWN BY: J. GLMORE
PROJECT MANAGER: R. WHITCOMB	DESIGNED BY: K. UPMAL	IPARM NAME: sj084ww.1
BRIDGE SHEET NUMBER:	SHEET 28 OF 38	