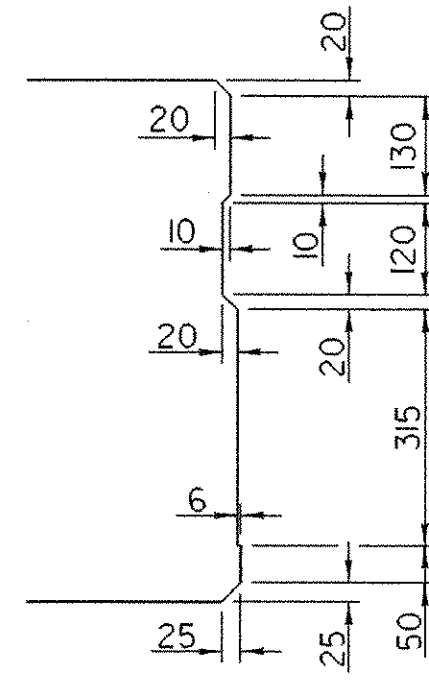


**SHEAR KEY SECTION FOR BOX BEAMS**

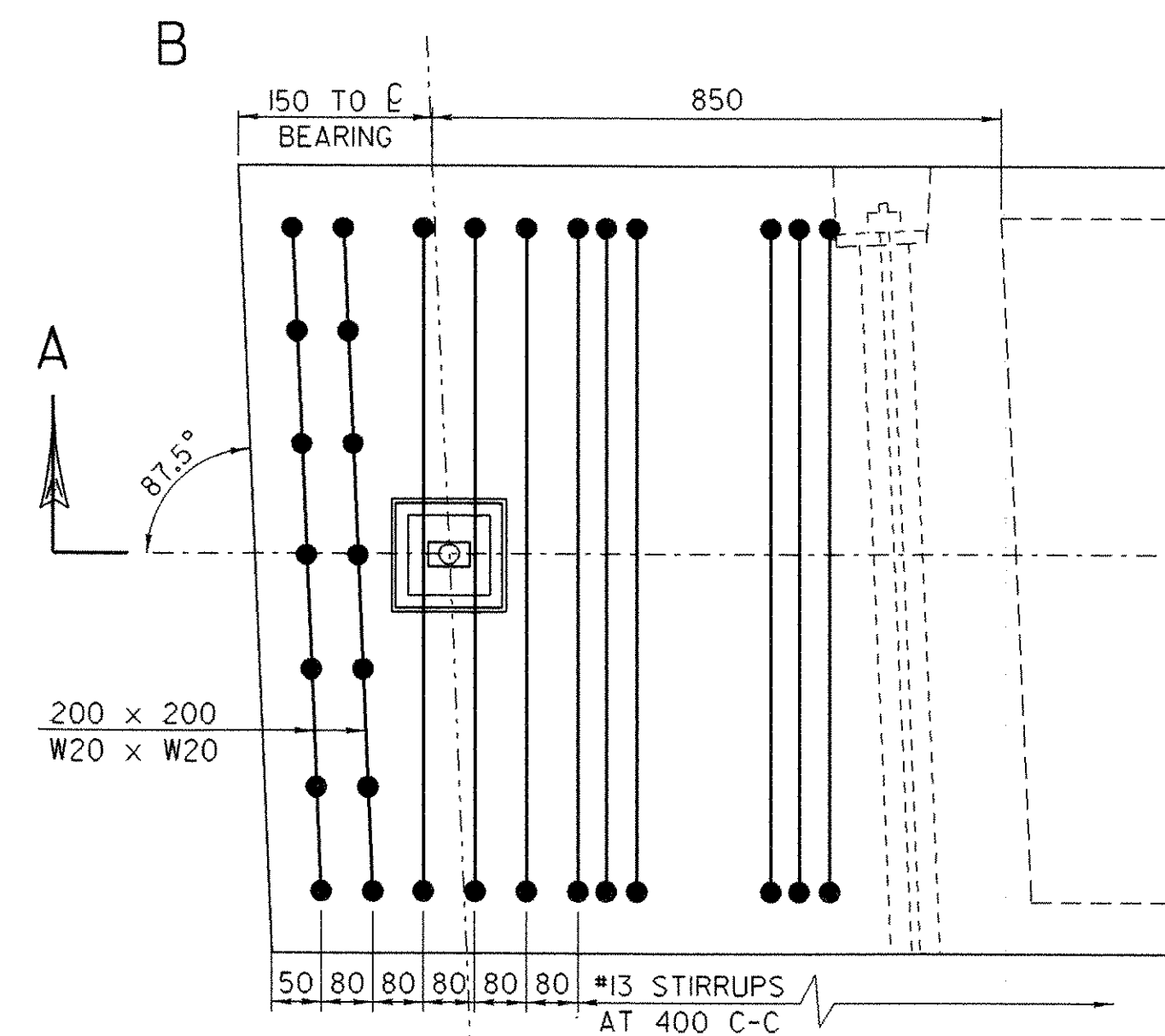
SCALE: 1:10



**SHEAR KEY DETAIL FOR BOX BEAMS**

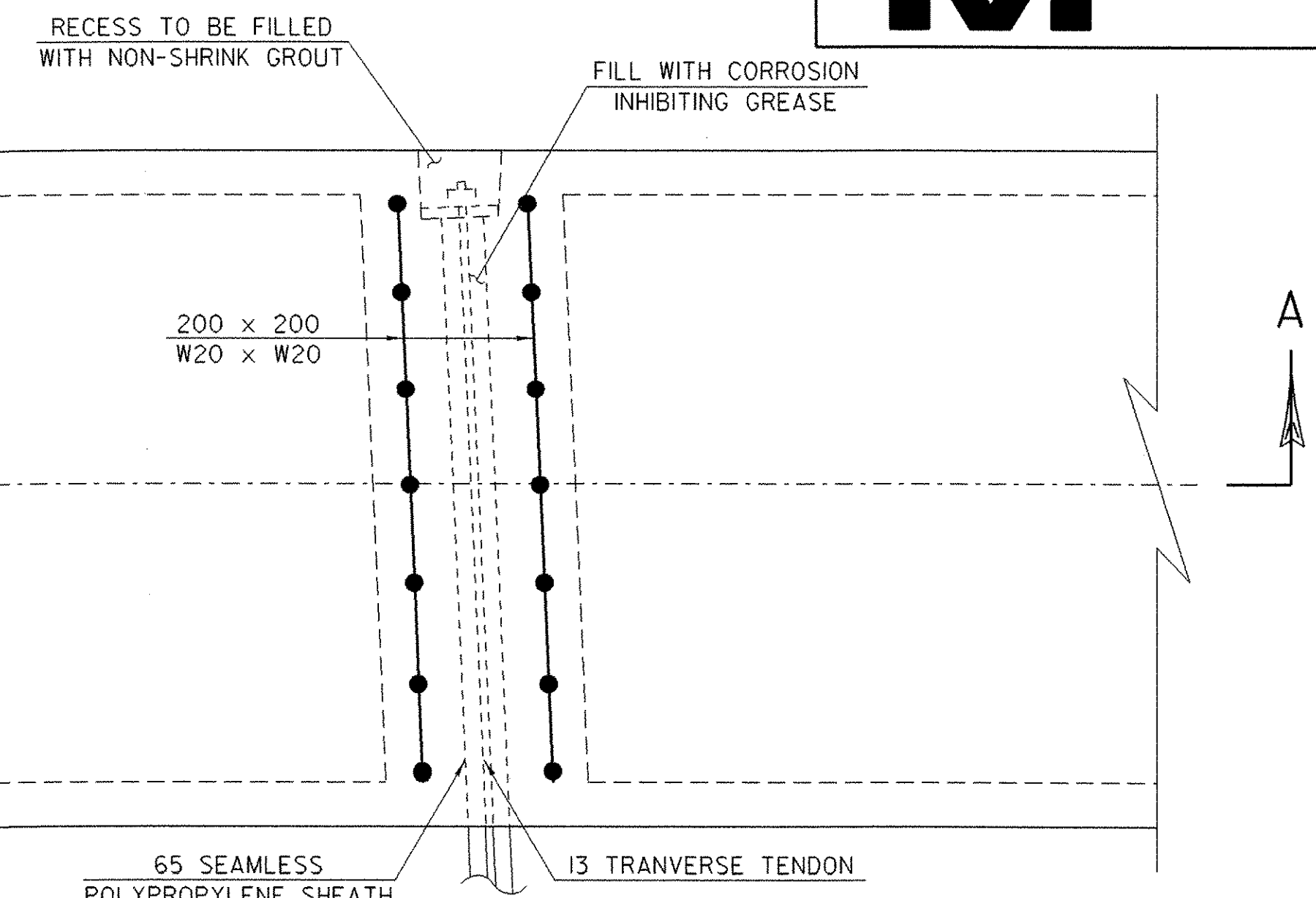
SCALE: 1:10

••NOTE: INSTALL AFTER UNITS HAVE BEEN PLACED



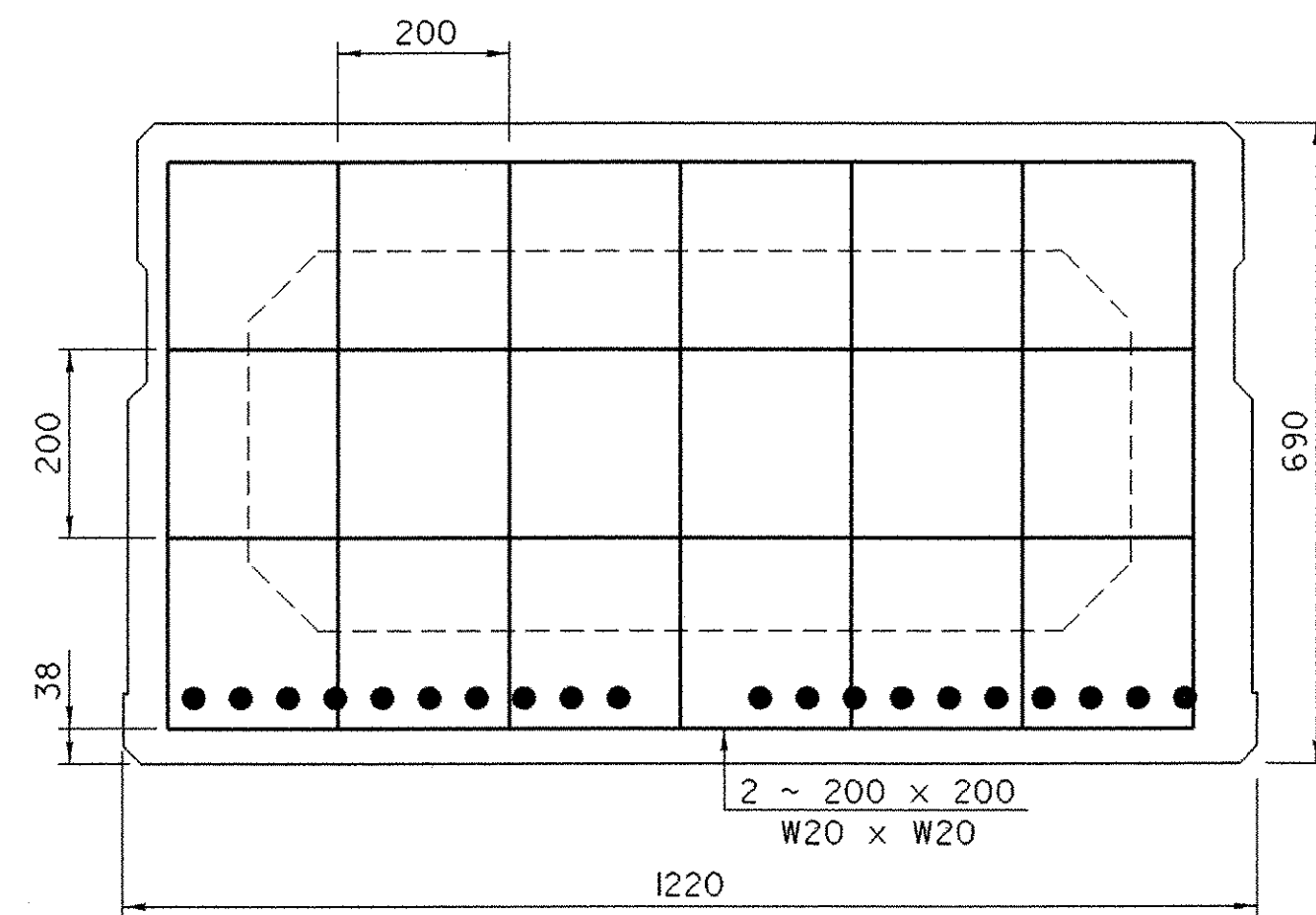
**END BLOCK DETAIL**

NTS



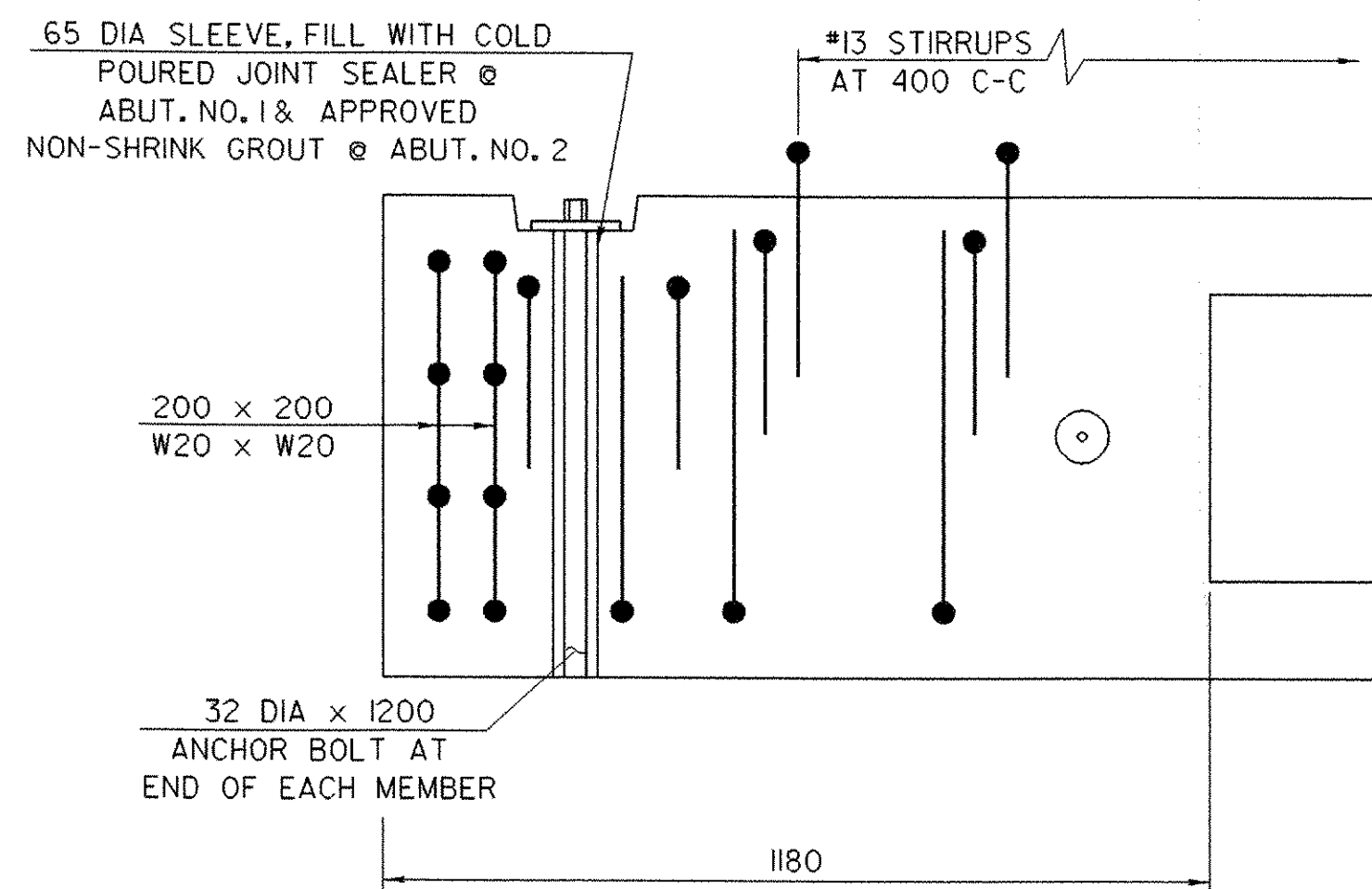
**DETAIL AT TRANSVERSE TENDON**

NTS



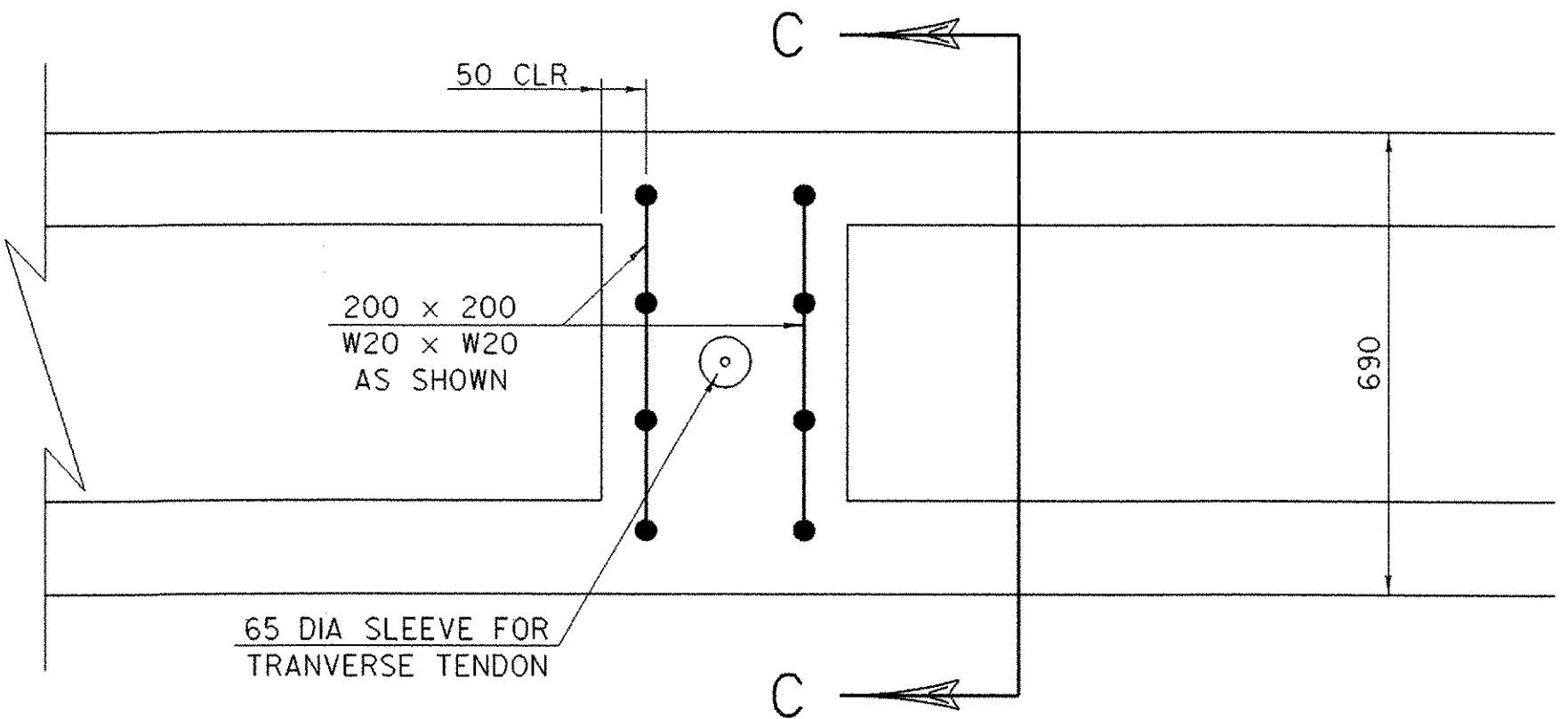
**SECTION B-B**

SCALE: 1:10



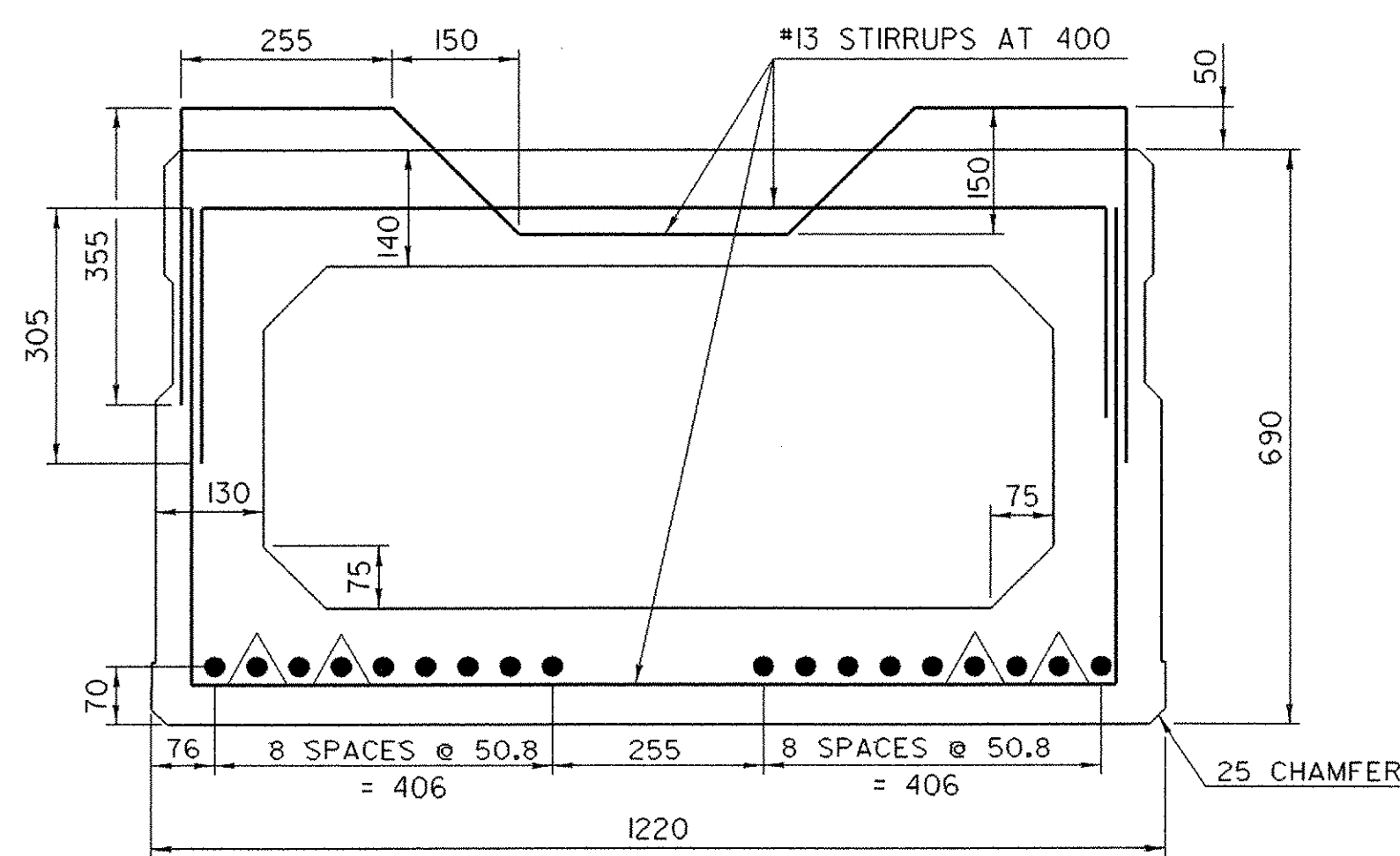
**BOX BEAM SECTION A-A**

SCALE: 1:10



**SECTION C-C**

NTS



NOTE: ALL DIMENSIONS ARE TYPICAL

△ = DEBOND 760

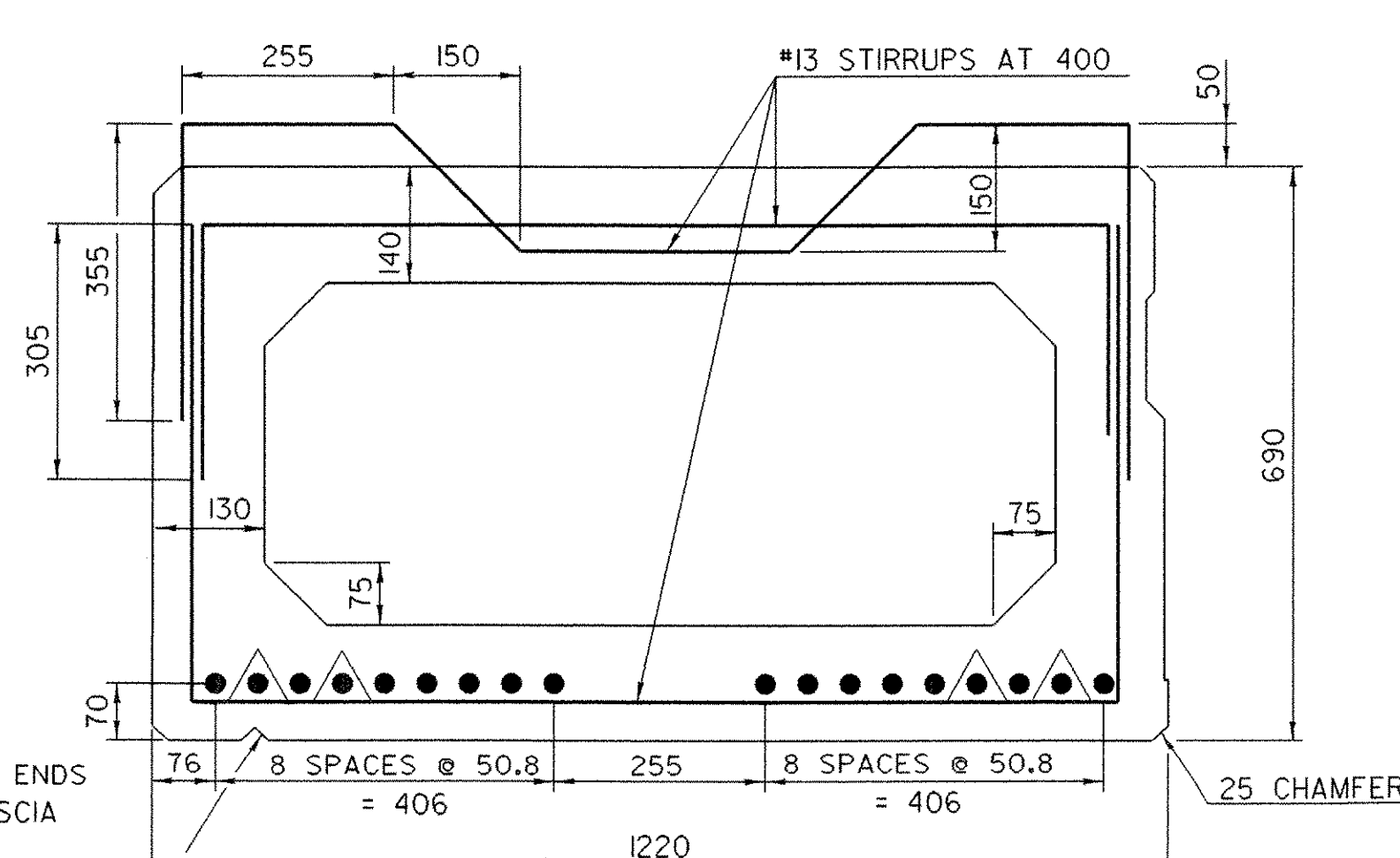
**INTERIOR BOX BEAM SECTION**

NTS

NUMBER OF STRANDS FOR 690 x 1220 BOXES

ROW	NO. OF STRANDS
1 AT 70	18 STRANDS

• ROWS ARE ALWAYS AT SPECIFIED DISTANCES FROM BOTTOM OF UNIT



•• STOP DRIP NOTCH 1.5 METERS FROM ENDS OF UNIT AND OUTLET AT 45 TO FASCIA

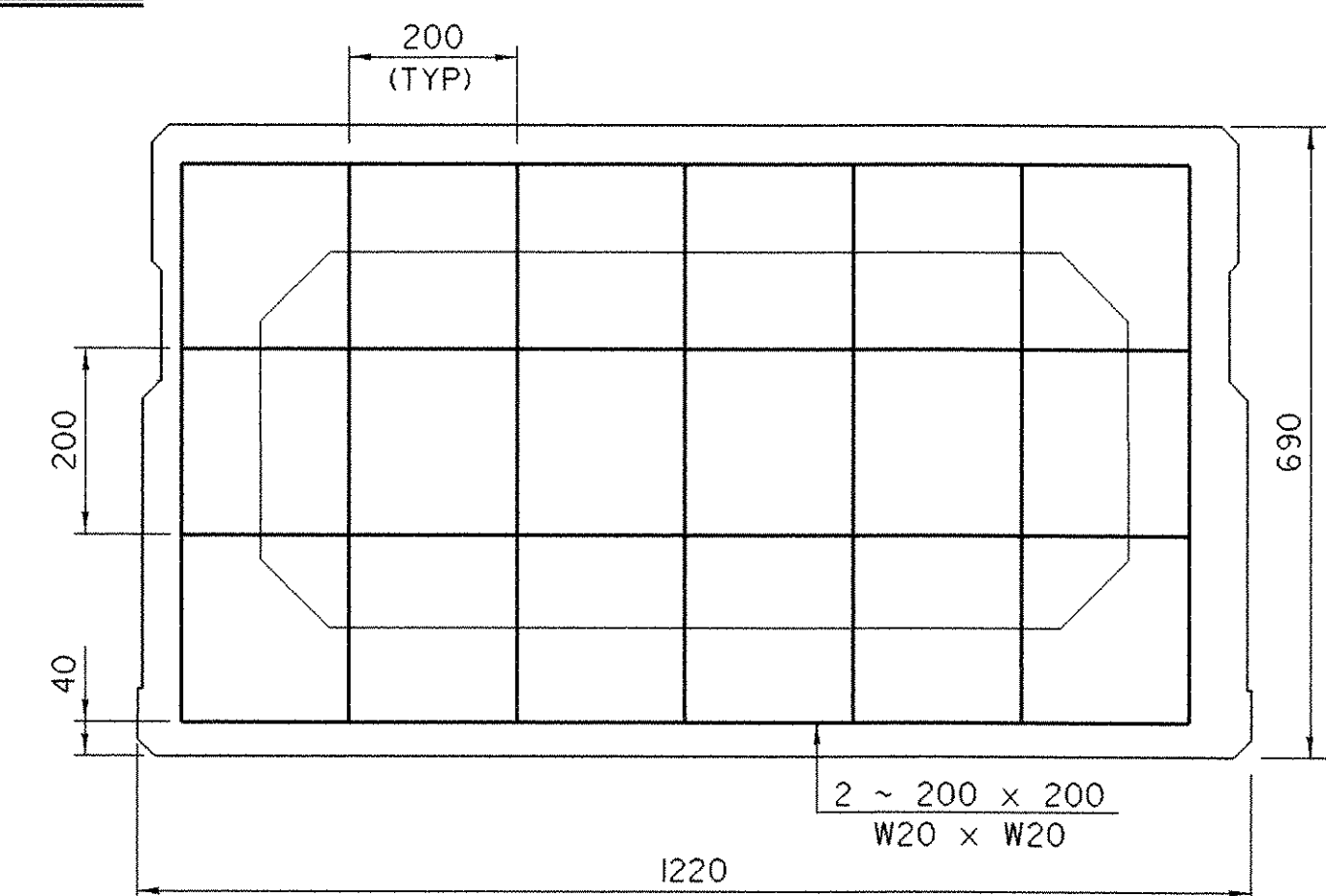
20 DRIP NOTCH

NOTE: ALL DIMENSIONS ARE TYPICAL

△ = DEBOND 760

**LEFT FASCIA UNIT (RIGHT FASCIA UNIT (OPPOSITE HAND))**

NTS



**SHEET NAME: BOX BEAM DETAILS**

PROJECT NAME: WALLINGFORD	HIGHWAY NO.: TH 60
PROJECT NUMBER: BRO 1443(3I)	BRIDGE NO.: 50
	OVER: OTTER CREEK
FILE NAME: /PW/94j084/sj084sup.dgn	PLOT DATE: 24-OCT-2005
PROJECT MANAGER: R. WHITCOMB	DRAWN BY: J. GILMORE
DESIGNED BY: K. UPMAL	IPARM NAME: sj084vsd.1
BRIDGE SHEET NUMBER:	SHEET 23 OF 38