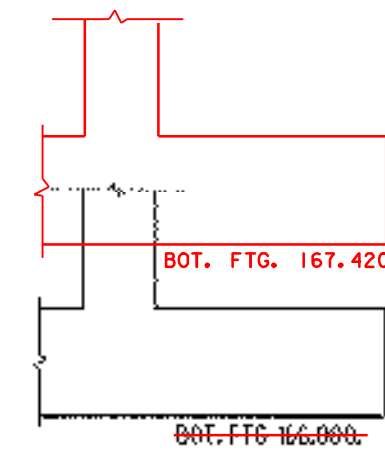
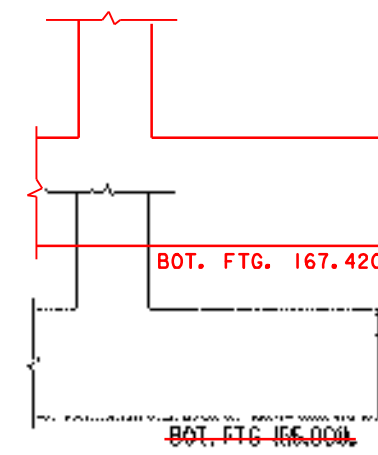


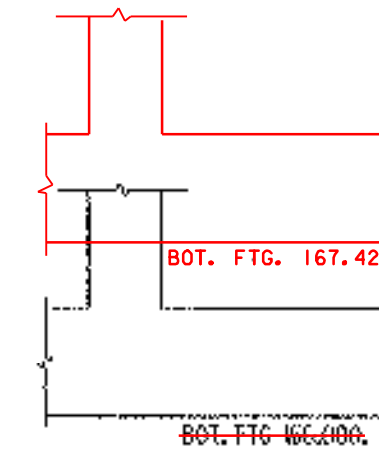
STATE OF VERMONT AGENCY OF TRANSPORTATION MATERIALS & RESEARCH DIVISION SUBSURFACE INFORMATION		HOLE NO.: B1 SHEET 1 OF 1 DATE STARTED: 4/17/99 DATE COMPLETED: 4/8/99							
PROJECT NAME: WALLINGFORD SITE NAME: BR #50 STATION: 3+08.50 GROUND EL.: 173.820		PROJECT NUMBER: BRO 1443(31) SITE NO.: TH #60 OFFSET: 0.00 G.W. DEPTH:							
BORING RIG: TRUCK CREW CHIEF: MCGLYNN DRILLER: MCGLYNN LOGGER: YOUNG ADDITIONAL CREW:		BORING RIG: TRUCK BORING TYPE: WASH BORE SAMPLE TYPE: SPLIT BARREL							
DEPTH	SYMBOL	CLASSIFICATION OF MATERIALS (Description)	BLOWS PER 0.3 m	M.C. %	GRAVEL %	SAND %	FINES %	LL	PI
		A-1-b, SaGr, M, qtz, brn, rec. = 0.26m	58	8.3	49.4	31.6	13		
		A-1-b, Gr, Sa, M, brn, rec. = 0.31m	2	10.7	27.4	62.1	10.5		
		A-2-4, Sa, M, brn, rec. = 0.13m	1	24.3	10.9	77.4	11.7		
		A-1-a, SaGr, M, brn, rec. = 0.08m	4	9.2	69	26.7	4.3		
		Run#1: BXDC 4.78m-5.28m rec. = 0.50m See Geologist's Report.							
		Run#2: BXDC 5.28m-7.82m rec. = 1.52m See Geologist's Report.							
		Run#3: BXDC 7.82m-8.96m rec. = 0.86m See Geologist's Report.							
Hole Stopped @ 8.86m									
10		Note: Large seams 4.78m-5.10m, some small seams to 6.00m some material ground up by core barrel. Changed core barrel at 8.28m - better recovery.							
GEOLOGIST'S REPORT:									
Run#1: Buff colored marble. Very hard. Rock is unweathered. Joint surfaces are stained and moderately weathered. Poor Recovery. Poor Competency.									
Run#2: Same as Run #1, but jointing is less weathered. Joint surfaces contain phylitic streaks. Competent.									
Run#3: Same as Run #1 but joint surfaces are fresh. Competent.									



STATE OF VERMONT AGENCY OF TRANSPORTATION MATERIALS & RESEARCH DIVISION SUBSURFACE INFORMATION		HOLE NO.: B2 SHEET 1 OF 1 DATE STARTED: 4/15/99 DATE COMPLETED: 4/16/99							
PROJECT NAME: WALLINGFORD SITE NAME: BR #50 STATION: 3+046.50 GROUND EL.: 171.24		PROJECT NUMBER: BRO 1443(31) SITE NO.: TH #60 OFFSET: -5.00 G.W. DEPTH:							
BORING RIG: TRUCK CREW CHIEF: MCGLYNN DRILLER: MCGLYNN LOGGER: CHABOT ADDITIONAL CREW:		BORING RIG: TRUCK BORING TYPE: WASH BORE SAMPLE TYPE: SPLIT BARREL							
DEPTH	SYMBOL	CLASSIFICATION OF MATERIALS (Description)	BLOWS PER 0.3 m	M.C. %	GRAVEL %	SAND %	FINES %	LL	PI
		A-4, SaS1, Sa1, brn, rec. = 0.04m	3	22.3	11.2	22.4	66.1		
5		A-7, Sa, Wet, brn, rec. = 0.30m	2	19	2.4	88.4	9.2		
		A-2-4, SiSa, Wet, brn, rec. = 0.45m	12	13.1		71.9	28.1		
		A-4, SaS1, Wet, brn, rec. = 0.45m	53	17.3	16.9	40.1	43		
		A-4, SaS3Gr, Wet, brn, rec. = 0.50m	43	25.3	40.6	23.6	35.8		
		Run#1: BXDC 9.80m-10.15m rec. = 0.30m See Geologist's Report.							
		Run#2: BXDC 10.15m-11.27m rec. = 0.76m See Geologist's Report.							
		Run#3: BXDC 11.27m-12.39m rec. = 0.50m See Geologist's Report.							
		Run#4: BXDC 12.39m-12.95m rec. = 0.60m See Geologist's Report.							
Hole Stopped @ 12.95m									
GEOLOGIST'S REPORT:									
Run#1: Light gray limestone. Moderately Hard. Unweathered. Competent.									
Run#2: Same as Run #1.									
Run#3: Same as Run #1. Fair Recovery.									
Run#4: Same as Run #1.									



STATE OF VERMONT AGENCY OF TRANSPORTATION MATERIALS & RESEARCH DIVISION SUBSURFACE INFORMATION		HOLE NO.: B3 SHEET 1 OF 2 DATE STARTED: 4/8/99 DATE COMPLETED: 4/2/99							
PROJECT NAME: WALLINGFORD SITE NAME: BR #50 STATION: 3+046.50 GROUND EL.: 173.575		PROJECT NUMBER: BRO 1443(31) SITE NO.: TH #60 OFFSET: -0.50 G.W. DEPTH:							
BORING RIG: TRUCK CREW CHIEF: MCGLYNN DRILLER: MCGLYNN LOGGER: YOUNG ADDITIONAL CREW:		BORING RIG: TRUCK BORING TYPE: WASH BORE SAMPLE TYPE: SPLIT BARREL							
DEPTH	SYMBOL	CLASSIFICATION OF MATERIALS (Description)	BLOWS PER 0.3 m	M.C. %	GRAVEL %	SAND %	FINES %	LL	PI
		0.00m - 1.20m - Crushed gravel fill material.							
		No recovery. Stone at end of sample. Appears to be gravelly material. BXDC 2.75m-2.93m No Recovery on boulder. BXDC 3.07m - 3.77m - Boulders	33						
		A-1-a, SaGr, Wet, brn, rec. = 0.22m	22	17.9	57.9	34.8	7.4		
		A-1-a, Gr, M, brn, rec. = 0.58m	51	9.9	81.2	15.5	3.3		
		A-1-a, Gr, Wet, brn, rec. = 0.26m	28	5.4	86.1	12.1	1.8		
		A-1-b, Sa, Wet, dk, brn, rec. = 0.42m	2	22	0.5	99.8	9.7		
		A-4, SaS1, M, lt, brn, rec. = 0.41m	9	29.3	0.5	25.7	73.4		
		A-2-4, SiSa, M, lt, brn, rec. = 0.44m	8	25.6	0.5	78.3	21.2		
		A-2-4, SiSa, M, lt, brn, rec. = 0.18m	19	31.7	0.5	78.8	20.7		
		A-4, SaS1, M, lt, brn, rec. = 0.40m	9	23.8	1	20.5	18.5		
		A-4, Si, M, lt, brn, rec. = 0.26m	5t	27.1	9.6	8	82.4		
		BXDC 12.45m-13.28m Boulders							
		Run#1: BXDC 13.28m-14.80m rec. = 1.47m. See Geologist's Report.							
		Run#2: BXDC 14.80m-16.32m rec. = 1.50m. See Geologist's Report.							
Hole Stopped @ 16.32m									
GEOLOGIST'S REPORT:									
Run#1: Gray limestone. Hard. Unweathered. Competent.									
Run#2: Same as Run #1, but with high angle clay filled joint between 15.5m and 15.95m. Competent.									



STATE OF VERMONT AGENCY OF TRANSPORTATION MATERIALS & RESEARCH DIVISION SUBSURFACE INFORMATION		HOLE NO.: B4 SHEET 1 OF 1 DATE STARTED: 4/13/99 DATE COMPLETED: 4/14/99							
PROJECT NAME: WALLINGFORD SITE NAME: BR #50 STATION: 3+046.50 GROUND EL.: 172.855		PROJECT NUMBER: BRO 1443(31) SITE NO.: TH #60 OFFSET: 3.50 G.W. DEPTH:							
BORING RIG: SKID RIG CREW CHIEF: MCGLYNN DRILLER: MCGLYNN LOGGER: CHABOT ADDITIONAL CREW:		BORING RIG: SKID RIG BORING TYPE: WASH BORE SAMPLE TYPE: SPLIT BARREL							
DEPTH	SYMBOL	CLASSIFICATION OF MATERIALS (Description)	BLOWS PER 0.3 m	M.C. %	GRAVEL %	SAND %	FINES %	LL	PI
		No Sample, in Boulders.							
		BXDC 3.50m-3.90m rec. = 0.78m, Boulders							
		A-1-a, SaGr, Wet, brn, rec. = 0.18m	64	11.2	63.3	30.6	6.1		
		A-2-4, SiSa, Wet, brn, rec. = 0.60m	5	20.8	1.9	71.6	26.5		
		A-4, SaS1, Wet, brn, rec. = 0.22m	7	26.6	1.7	27.5	70.4		
		A-2-4, SiSa, Wet, brn, rec. = 0.30m	5	19.4	13.8	66.1	20.1		
		Visual Classification: SiSa	12						
		BXDC 12.49m-12.84m Boulders							
		Run#1: BXDC 12.84m-14.01m rec. = 1.37m. See Geologist's Report.							
		Run#2: BXDC 14.01m-15.55m rec. = 0.38m. See Geologist's Report.							
		Run#3: BXDC 14.55m-15.76m rec. = 0.45m. See Geologist's Report.							
Hole Stopped @ 15.76m									
GEOLOGIST'S REPORT:									
Run#1: Light gray limestone. Moderately Hard. Unweathered. Competent.									
Run#2: Same as Run #1.									
Run#3: Same as Run #1.									

SHEET NAME: BORING LOGS SHEET

PROJECT NAME: WALLINGFORD  
PROJECT NUMBER: BRO 1443(31)  
FILE NAME: /PW/94J084/sj084bor.dgn  
PROJECT MANAGER: R. WHITCOMB  
DESIGNED BY: K. UPMAL  
BRIDGE SHEET NUMBER:

HIGHWAY NO.: TH 60  
BRIDGE NO.: 50  
OVER: OTTER CREEK  
PLOT DATE: 24-OCT-2005  
DRAWN BY: C. CURTIS  
IPARM NAME: sj084log.1  
SHEET 13 OF 38