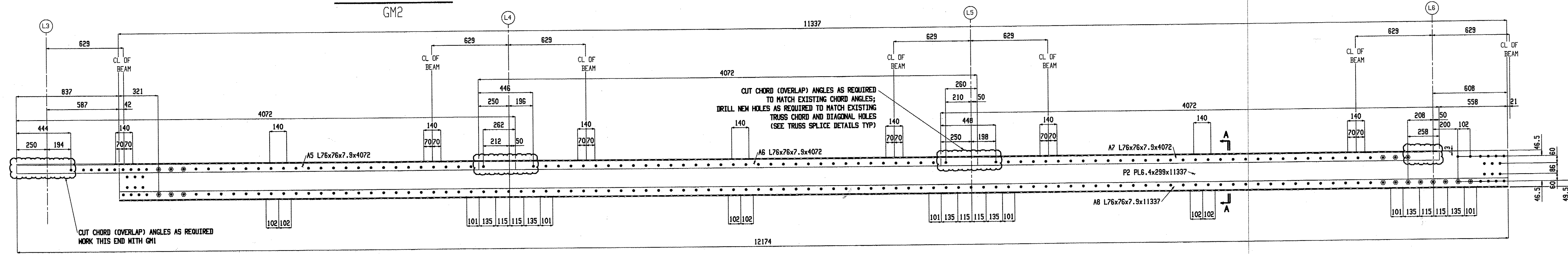
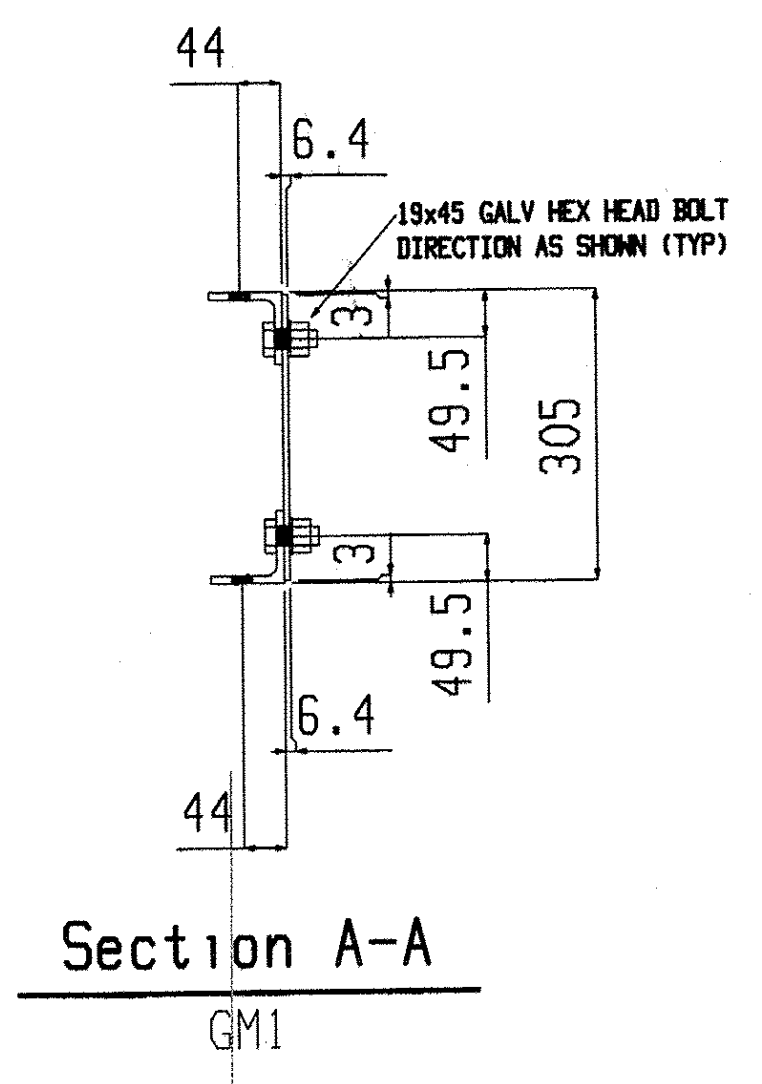
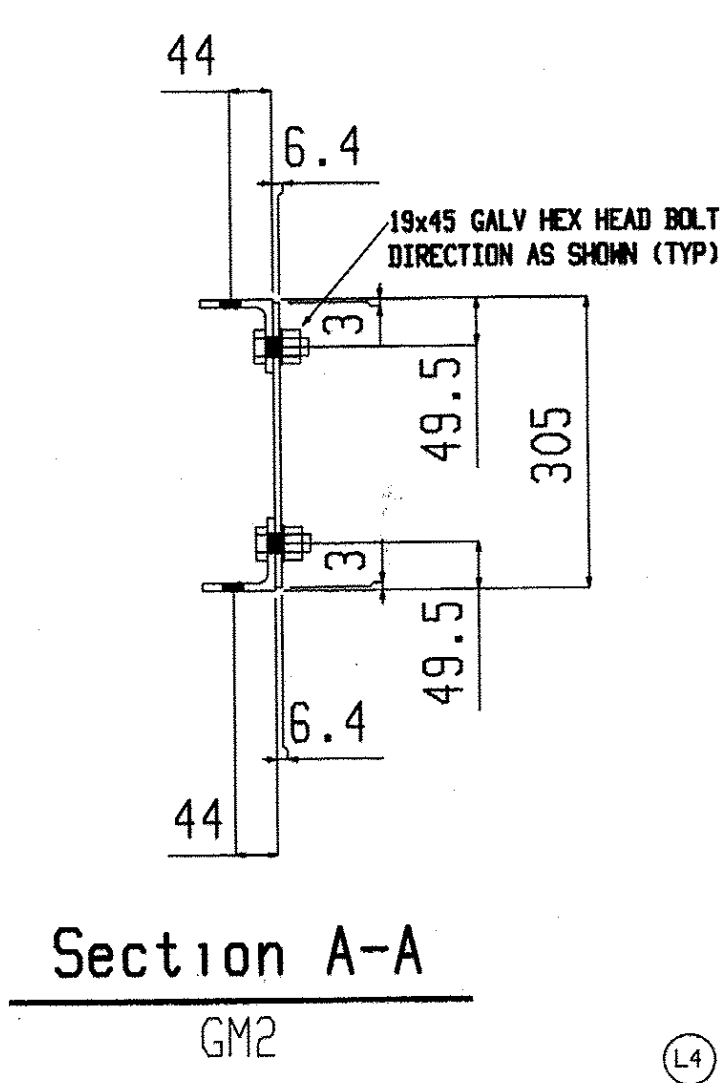


2 GROUP MEMBERS GM1



2 GROUP MEMBERS GM2

BILL OF MATERIAL									BILL OF MATERIAL									BILL OF MATERIAL								
Qty	Piece			Seq	Seq	Adv	Steel	Remarks	Qty	Piece			Seq	Seq	Adv	Steel	Remarks	Qty	Piece			Seq	Seq	Adv	Steel	Remarks
Tot.	Mark	Description	Length	NO.	Qty	ABM #	Grade		Tot.	Mark	Description	Length	NO.	Qty	ABM #	Grade		Tot.	Mark	Description	Length	NO.	Qty	ABM #	Grade	
2	GM1	GROUP MEMBER							2	GM2	GROUP MEMBER															
2	P1	PL6.4x299	12171				M270M-345		2	P2	PL6.4x299	11337				M270M-345										
2	A4	L76x76x7.9	12264				M270M-345		2	A5	L76x76x7.9	4072				M270M-345										
2	A3	L76x76x7.9	4022				M270M-345		2	A6	L76x76x7.9	4072				M270M-345										
2	A2	L76x76x7.9	4022				M270M-345		2	A7	L76x76x7.9	4072				M270M-345										
2	A1	L76x76x7.9	3887				M270M-345																			

Total weight: 1565
 Paid as lump sum

What paint system is being used?

RECEIVED
 NOV 17 2008
 APPROVED AS NOTED
 DATE 1/12/2010

Renaud Bros. Inc.
 283 Fort Bridgeman Rd. #2
 Verron, VT. 05354
 Phone 1-802 257-7383

Project: **DUMMERSTON BRIDGE**
 DUMMERSTON, VT

Date: 9-9-09
 Job No. 340142(28)
 Sheet No. GM1, GM2

Holes: 21mm UNF
 BOLTS: 19mm DIA. M16xM-I GALV UNF
 Steel GR: M270M-GR345 UNF
 Paint: PER SPECS (GREEN) UNF
 Surface Prep: PER SPECS

These are parts numbers, not a sheet number.