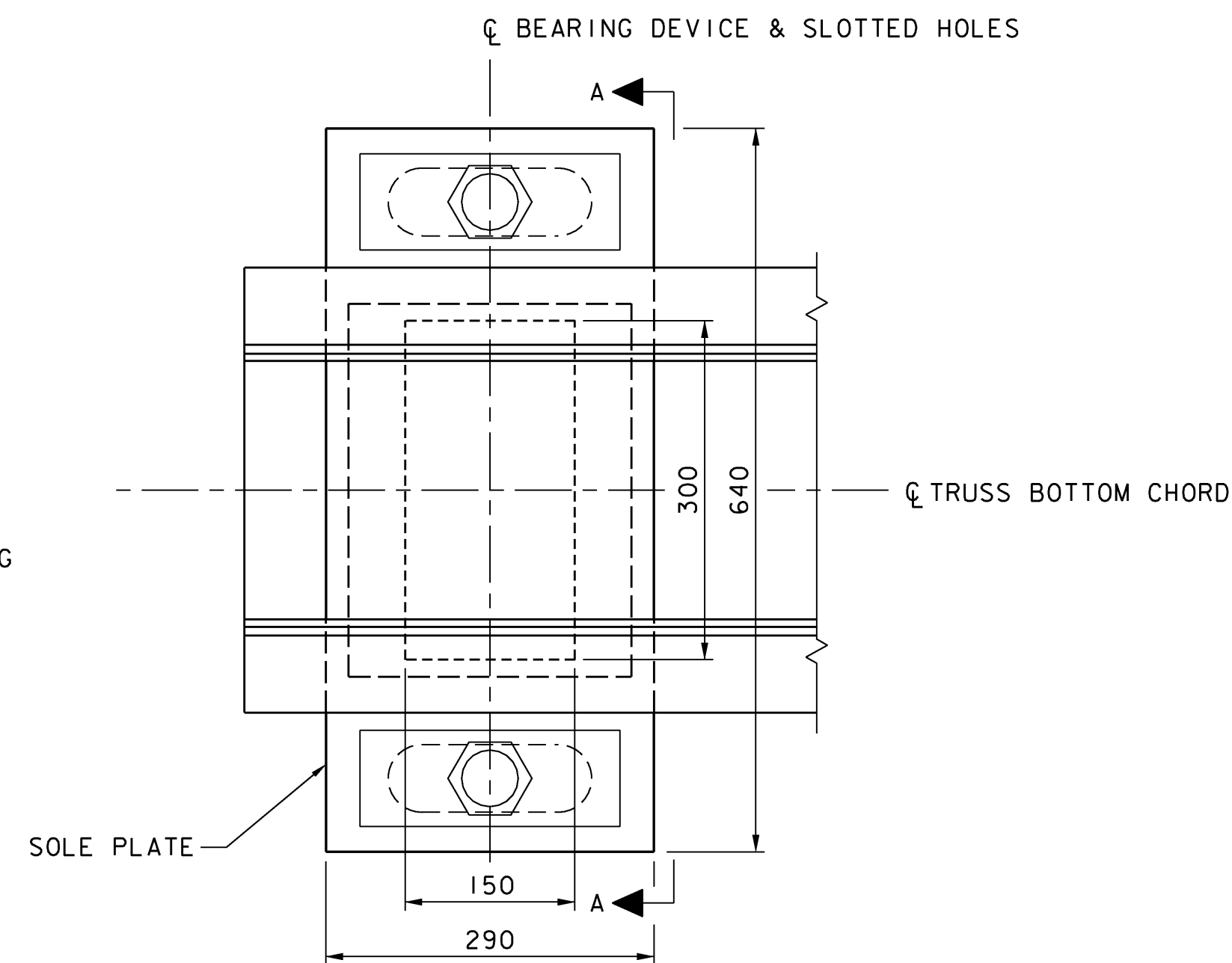
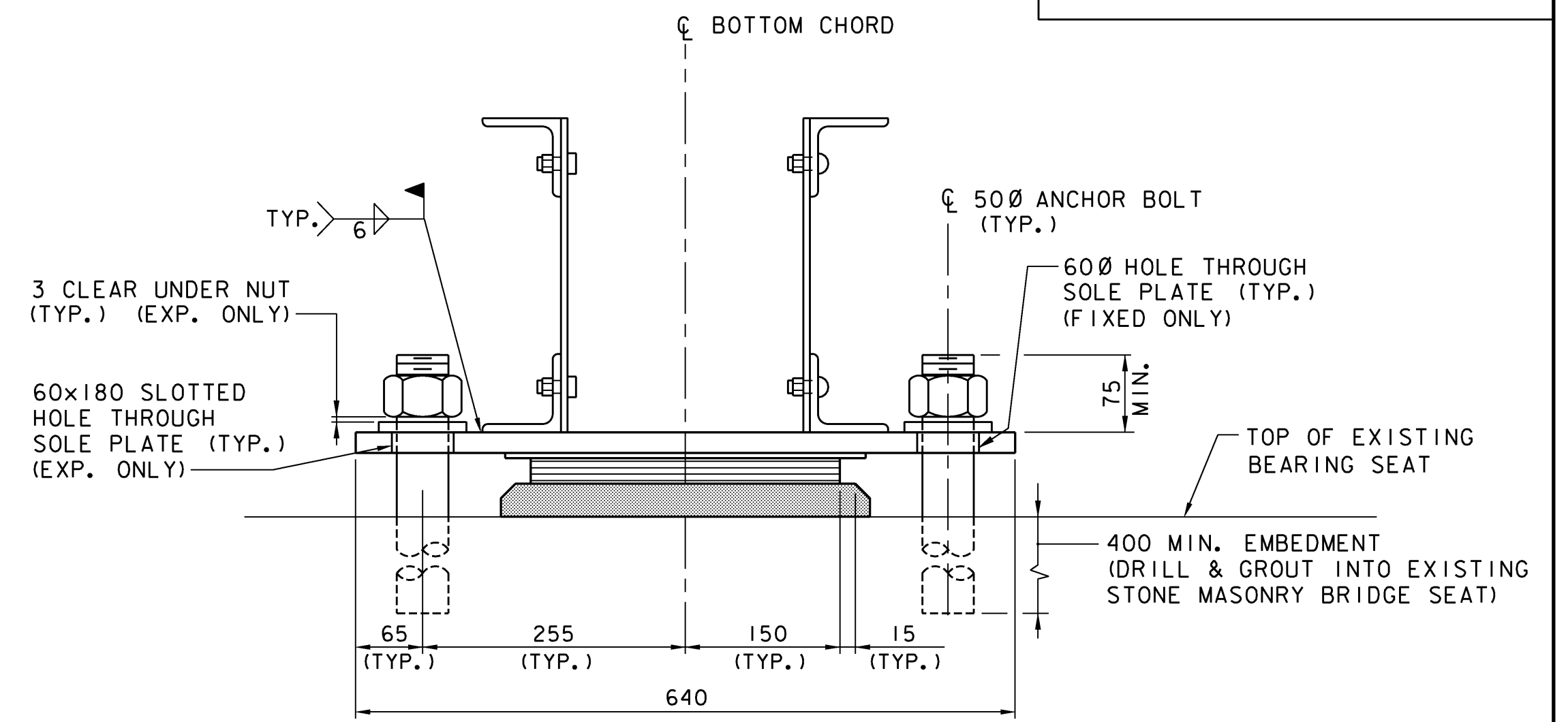


**ELEVATION**



**PLAN**

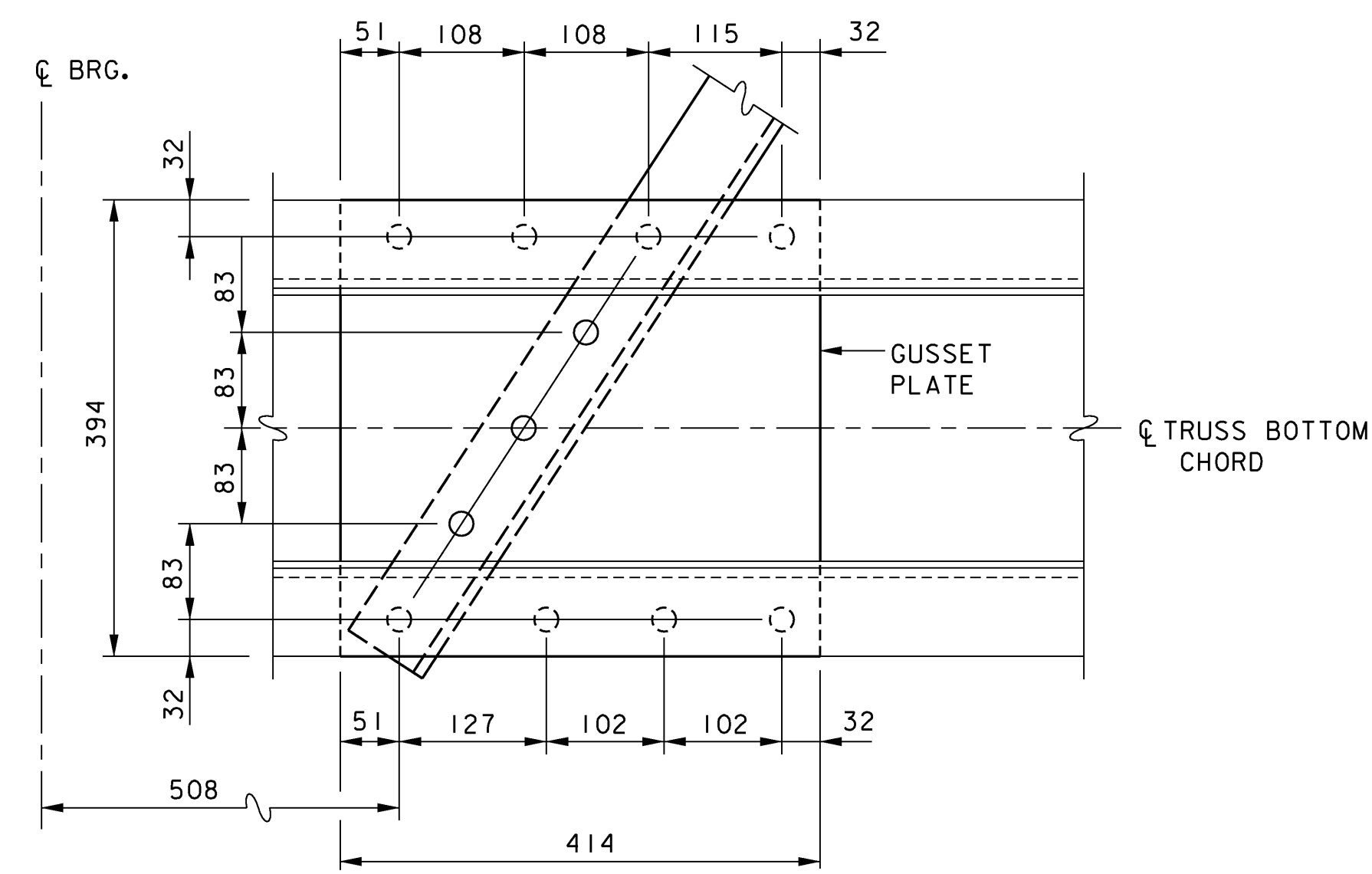


**SECTION A-A**

**EXPANSION BEARINGS (ABUT. NO. 1)**

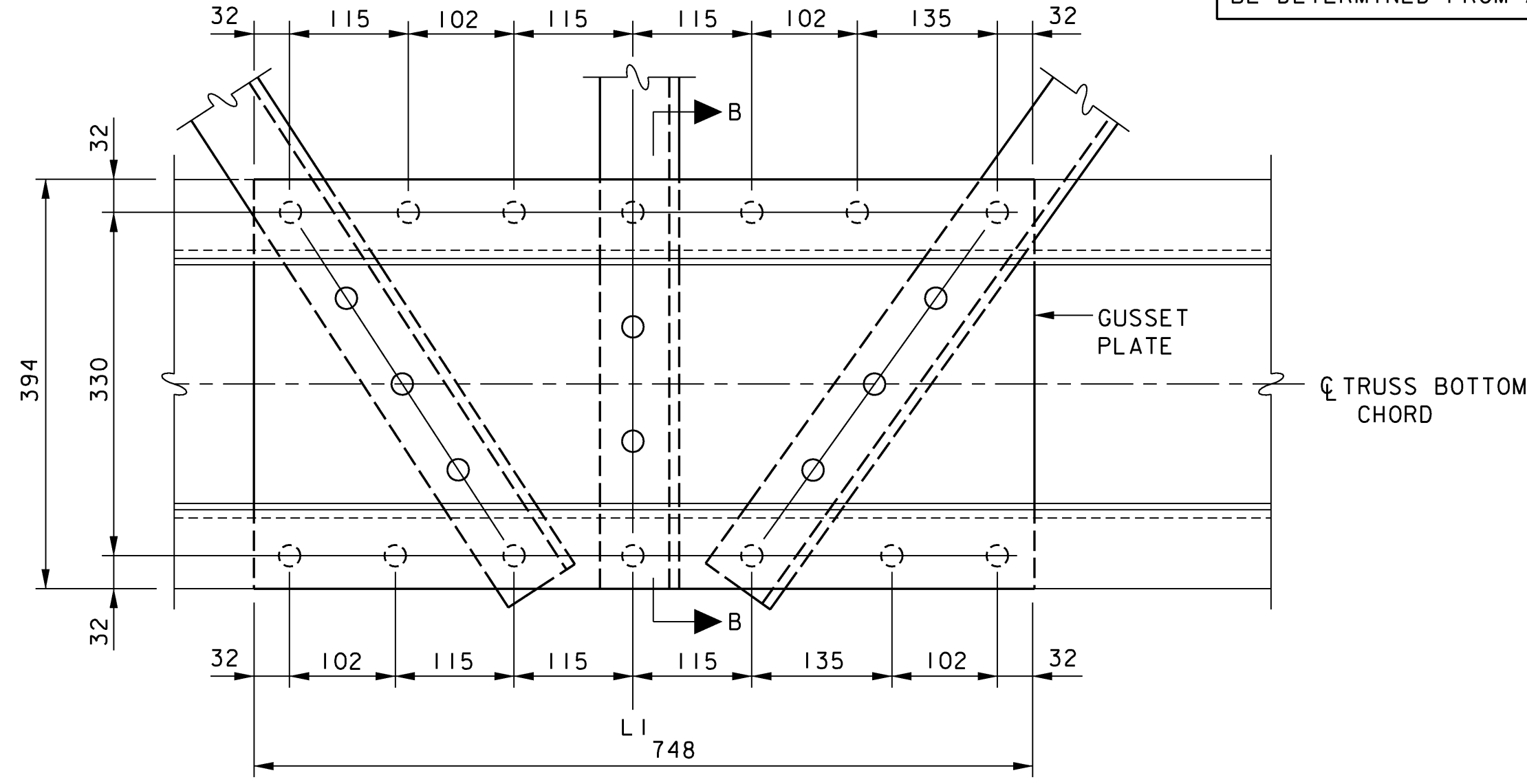
(FIXED BEARING SIMILAR)  
SCALE: 1:5

DIMENSIONS PROVIDED IN THESE PLANS SHALL NOT BE USED FOR FABRICATION PURPOSES. ALL NECESSARY DIMENSIONS AND CONFIGURATIONS SHALL BE DETERMINED FROM ACTUAL FIELD MEASUREMENTS.



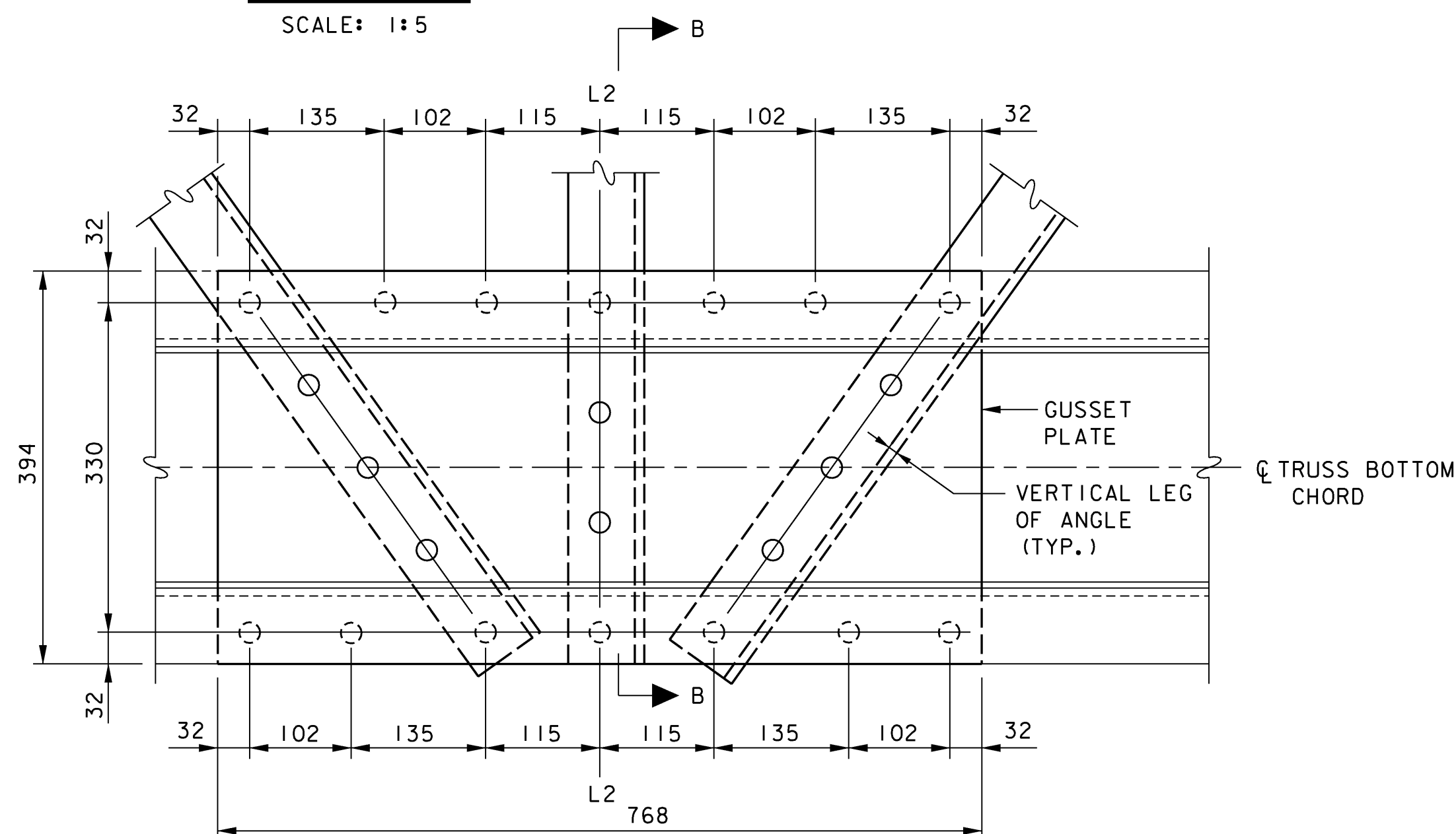
**DETAIL A**

SCALE: 1:5



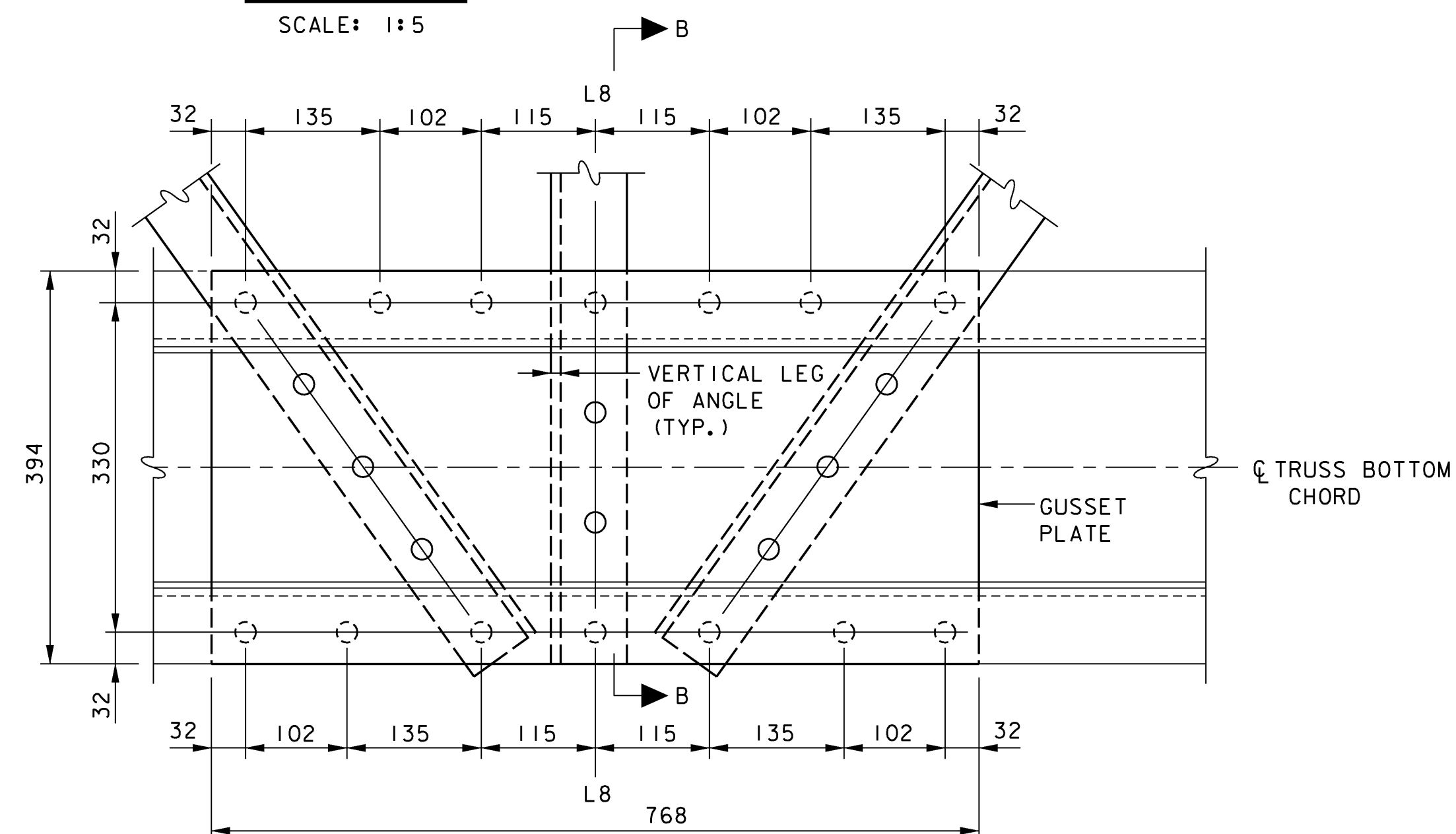
**DETAIL B**

SCALE: 1:5



**DETAIL C**

SCALE: 1:5



**DETAIL D**

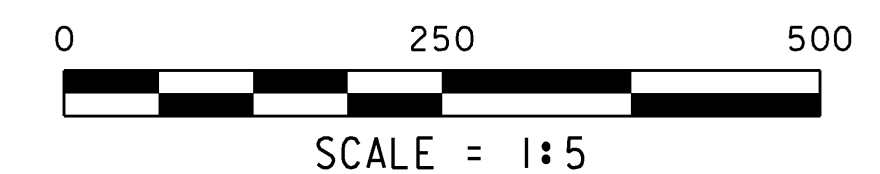
SCALE: 1:5

REACTIONS (KILONEWTONS)	
LIVE LOAD	89
DEAD LOAD	222

EXPANSION BEARING TEMPERATURE ADJUSTMENT TABLE	
TEMPERATURE	ABUT. NO. 1 "A"
-18° C	88
-9° C	81
-1° C	76
7° C	70
16° C	64
24° C	58
32° C	52
41° C	46

**NOTES:**

- HIGH STRENGTH NON-SHRINK MORTAR PADS SHALL BE PLACED UNDER EACH BEARING TO PROVIDE A SMOOTH LEVEL SURFACE AT THE PROPOSED ELEVATION FOR THE FABRIC PAD TO BEAR ON. ALL COSTS FOR THE MORTAR PADS SHALL BE INCLUDED IN THE PRICE BID FOR ITEM 531.10, BEARING DEVICE ASSEMBLY, PREFORMED FABRIC PAD. GROUT MATERIAL SHALL BE MORTAR, TYPE IV, CONFORMING TO SUBSECTION 707.03 OF THE SPECIFICATIONS.
- SEE SHEET 16 FOR ADDITIONAL BEARING NOTES.
- SEE SHEET 23 FOR LOCATIONS OF DETAILS A, B, C, & D.
- SEE SHEET 23 FOR SECTION B-B.



**STATE OF VERMONT AGENCY OF TRANSPORTATION**

Town Of	DUMMERSTON	Bridge No.	37
Highway No.	TH 62	Log Sta.	
		Surv. Sta.	
TH 62 OVER WEST RIVER			
<b>LATERAL BRACING &amp; BEARING DETAILS</b>			
Designed By	W. M. MOSHER	Drawn By	M. M. LANDREY
Checked By	S. M. HODGDON	Date	4/09
		Bridge Design Supervisor	S. M. HODGDON Date 4/09
PROJECT	DUMMERSTON	PROJECT NO.	BHO 1442 (28)

VANASSE HANGEN BRUSTLIN, INC.

I.G.C. Info.  
Bridge Sheet No. ZJ08BRG Sheet 24 of 49