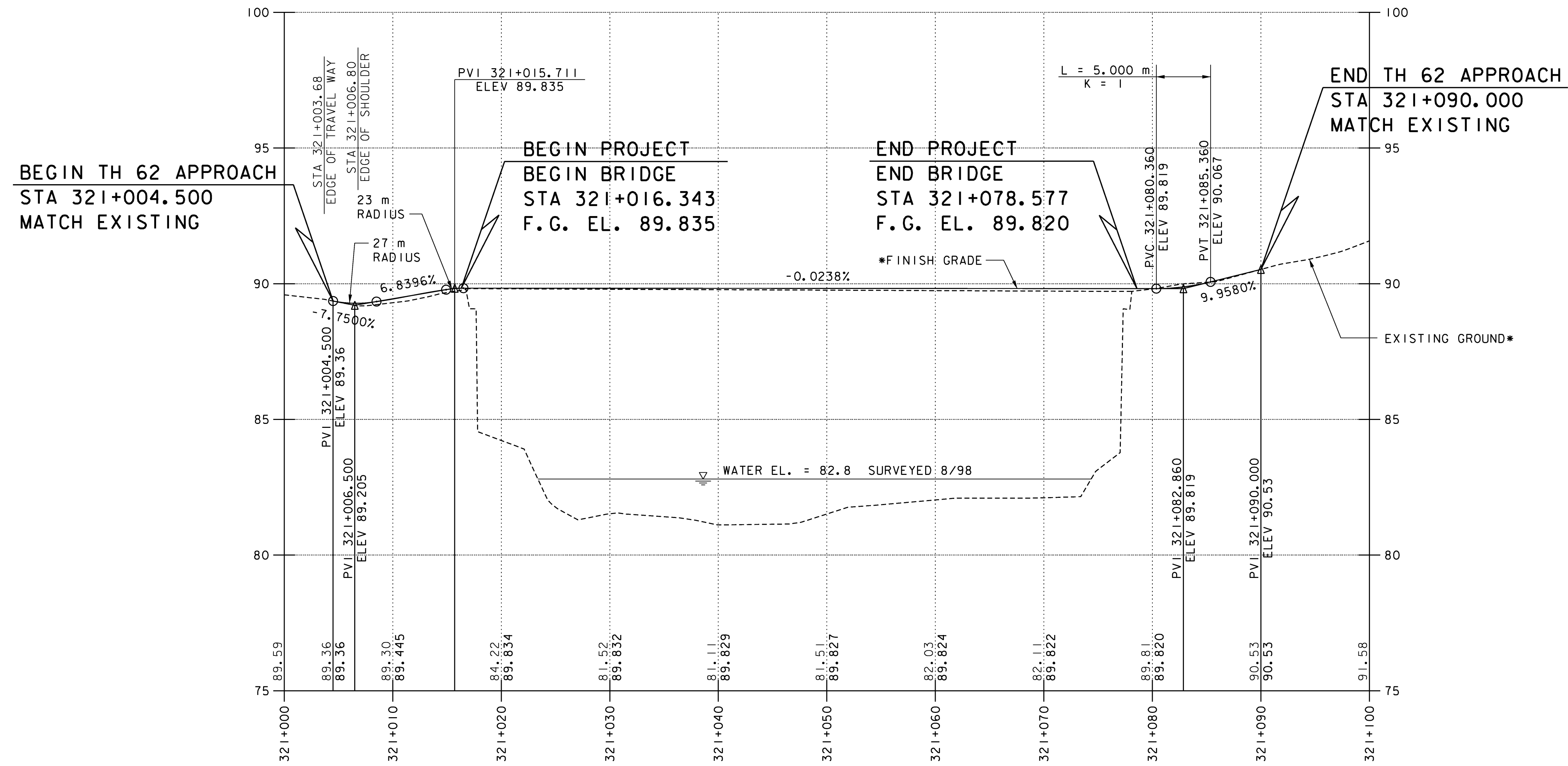


# TH 62



\* ELEVATIONS SHOWN TO THREE DECIMAL PLACES ARE FINISH GRADE ALONG  $\phi$  TH 62. ELEVATIONS SHOWN TO TWO DECIMAL PLACES ARE EXISTING GROUND ALONG  $\phi$  TH 62.

DATUM  
VERTICAL NAVD 88  
HORIZONTAL NAD 83 (92)

VANASSE HANGEN BRUSTLIN, INC.

## STATE OF VERMONT AGENCY OF TRANSPORTATION

Town Of	DUMMERSTON	Bridge No.	37
Highway No.	TH 62	Log Sta.	
		Surv. Sta.	

### TH 62 OVER WEST RIVER

Designed By	C.L. CILLEY	Drawn By	C.L. CILLEY
Checked By	S. M. HODGDON	Date	4/09
		Bridge Design Supervisor	S. M. HODGDON Date 4/09

PROJECT	DUMMERSTON	PROJECT NO.	BHO 1442 (28)
---------	------------	-------------	---------------

I.G.C. Info.	Bridge Sheet No. ZJ080PR1	Sheet	6 of 49
--------------	---------------------------	-------	---------