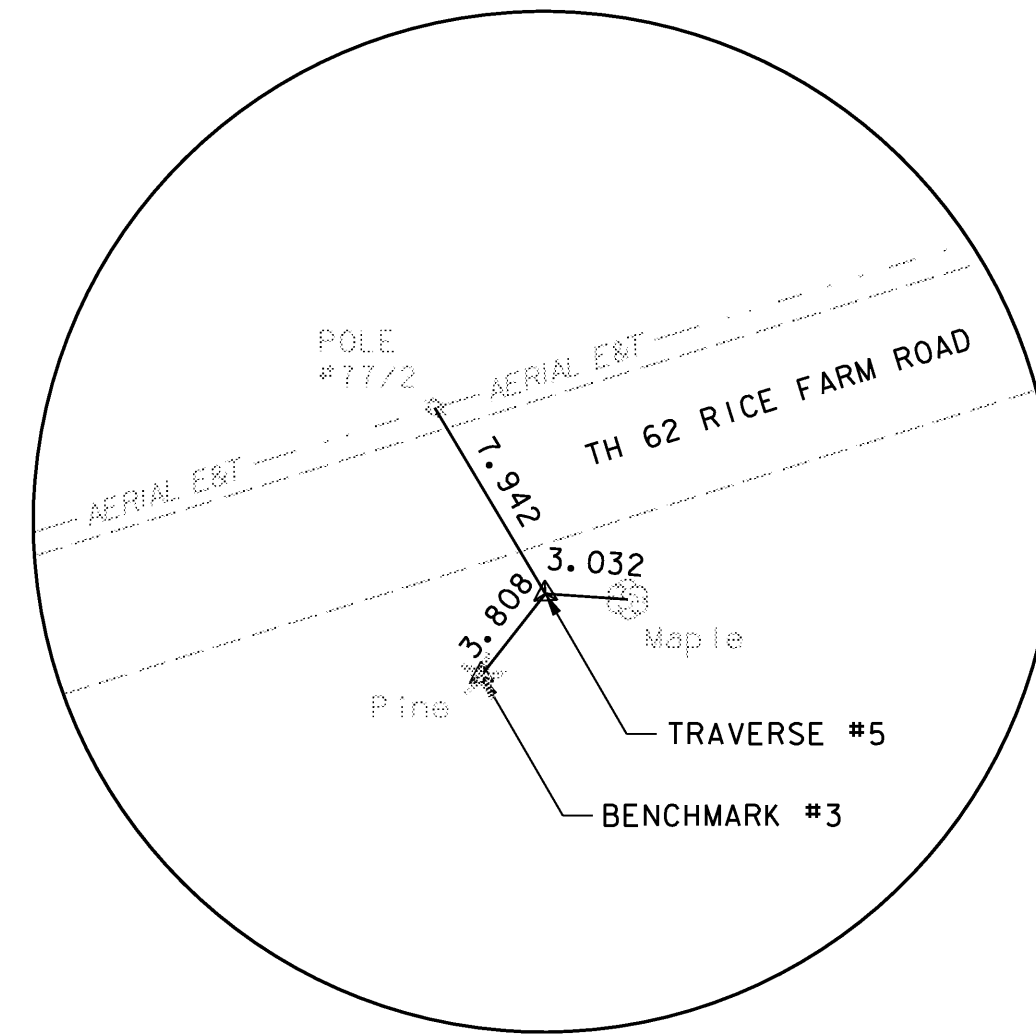


SURVEY DISC STAMPED STICKNEY 1988  
DISC SET ON BRIDGE ABUTMENT

BENCHMARK #2  
NORTHING = 46238.9390  
EASTING = 490731.3521  
ELEVATION = 89.09

**BENCHMARK #2**  
NOT TO SCALE

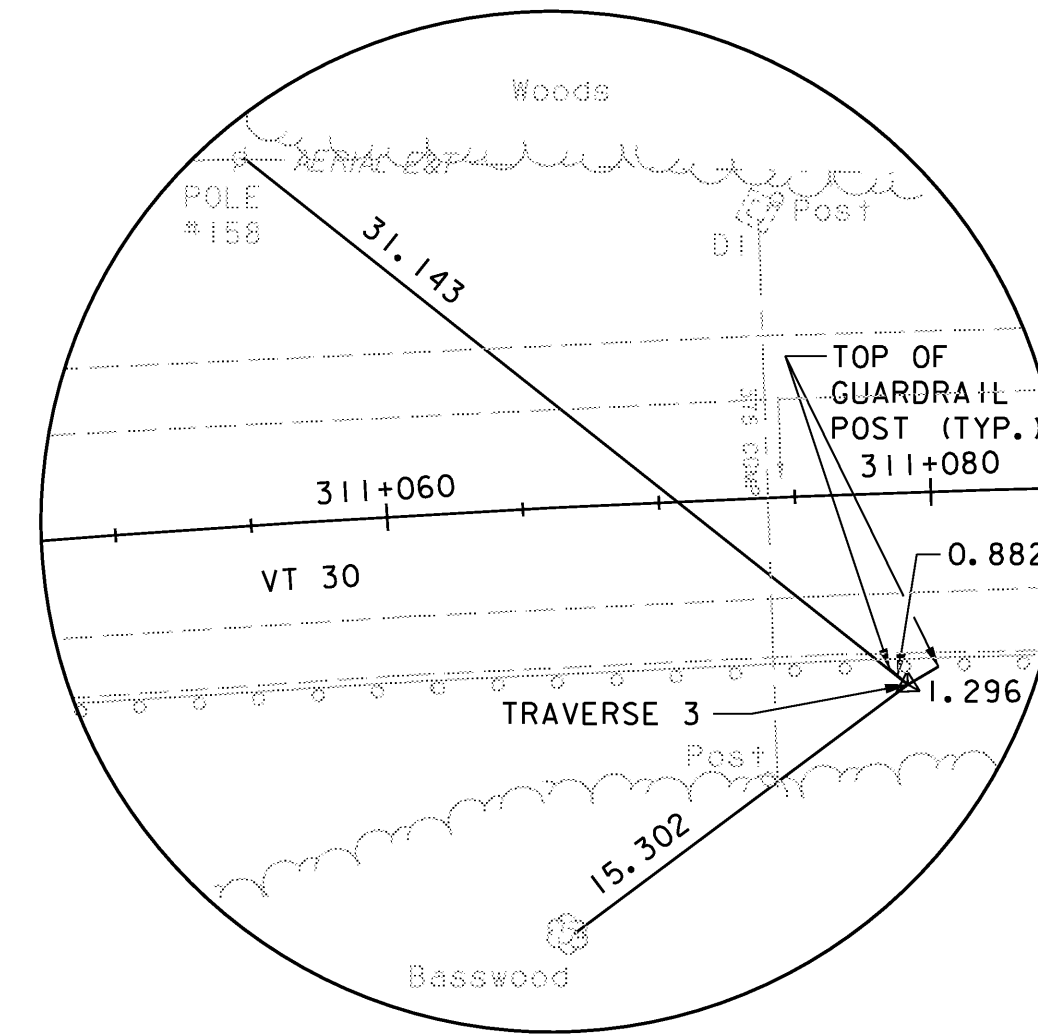


LAG BOLT IN LARGE PINE

BENCHMARK #3  
NORTHING = 46169.3250  
EASTING = 490922.6800  
ELEVATION = 91.90

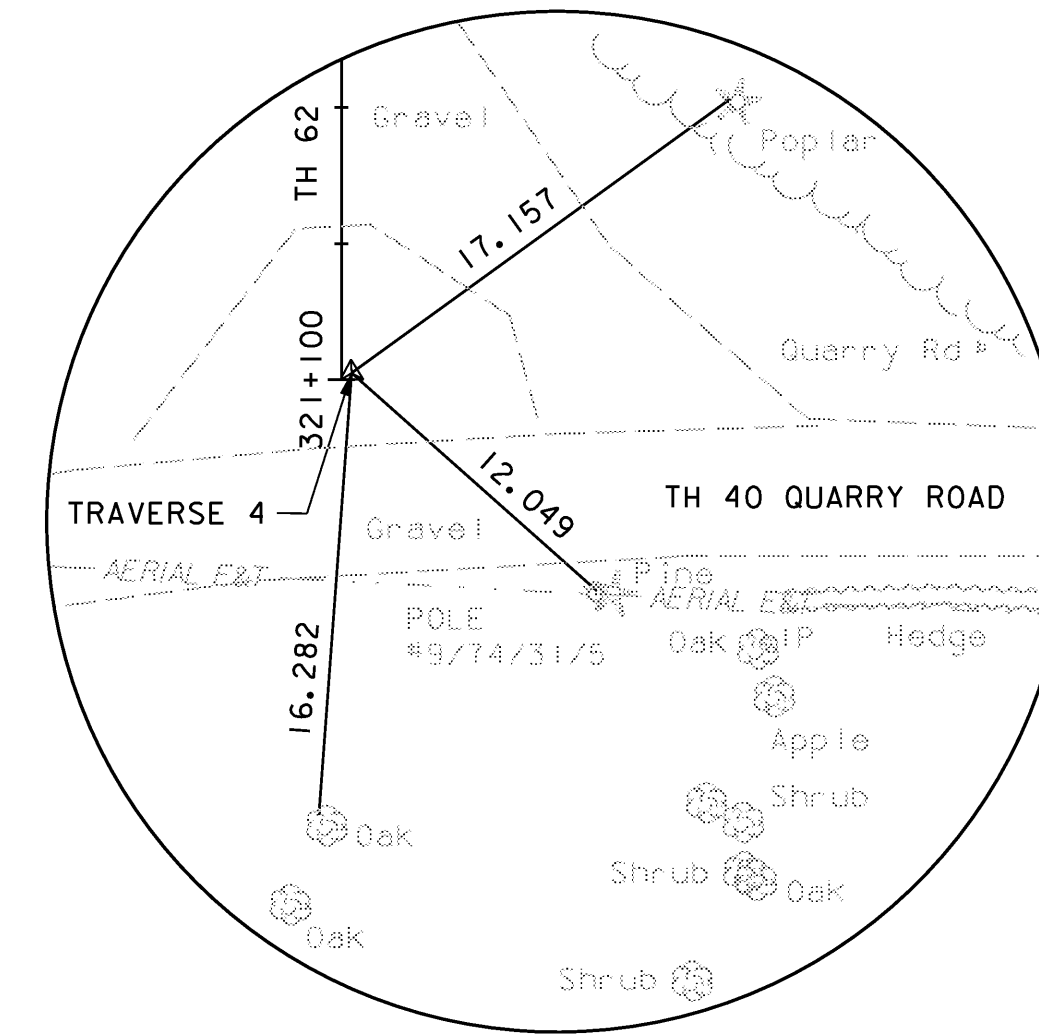
TRAVERSE #5  
NORTHING = 46169.9890  
EASTING = 490918.9343  
ELEVATION = 91.39

**BENCHMARK #3**  
NOT TO SCALE



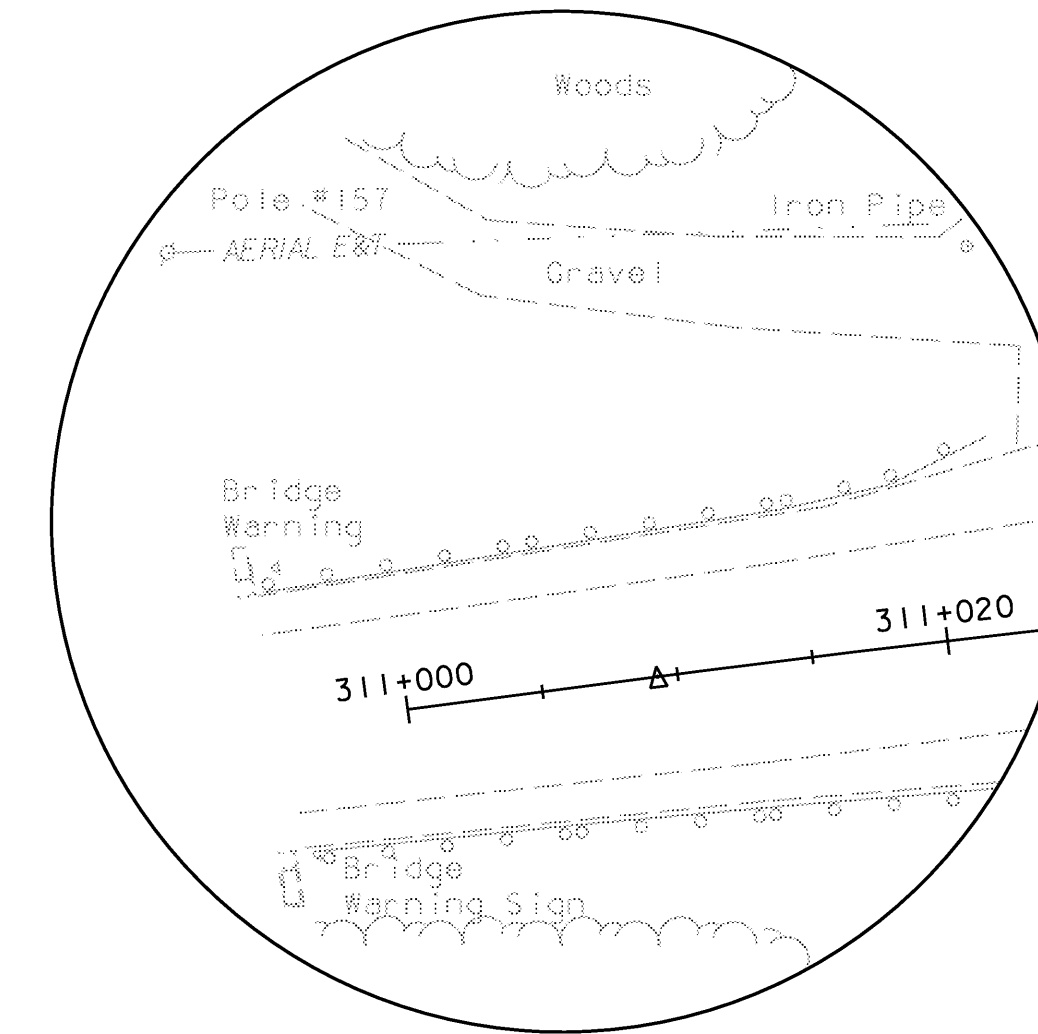
TRAVERSE #3  
NORTHING = 46217.5503  
EASTING = 490731.2791  
ELEVATION = 88.9226

**TRAVERSE #3**  
NOT TO SCALE



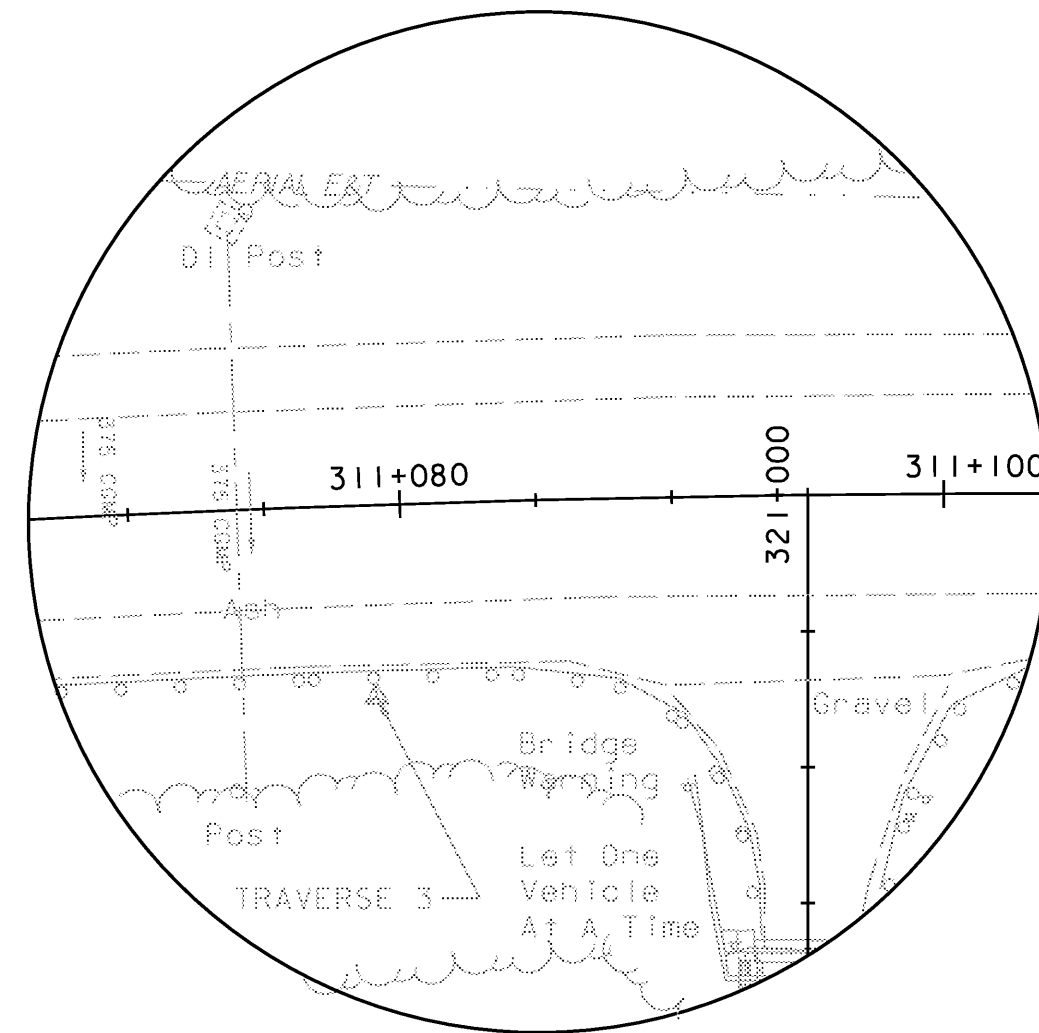
TRAVERSE #4  
NORTHING = 46275.1862  
EASTING = 490805.2115  
ELEVATION = 91.6137

**TRAVERSE #4**  
NOT TO SCALE



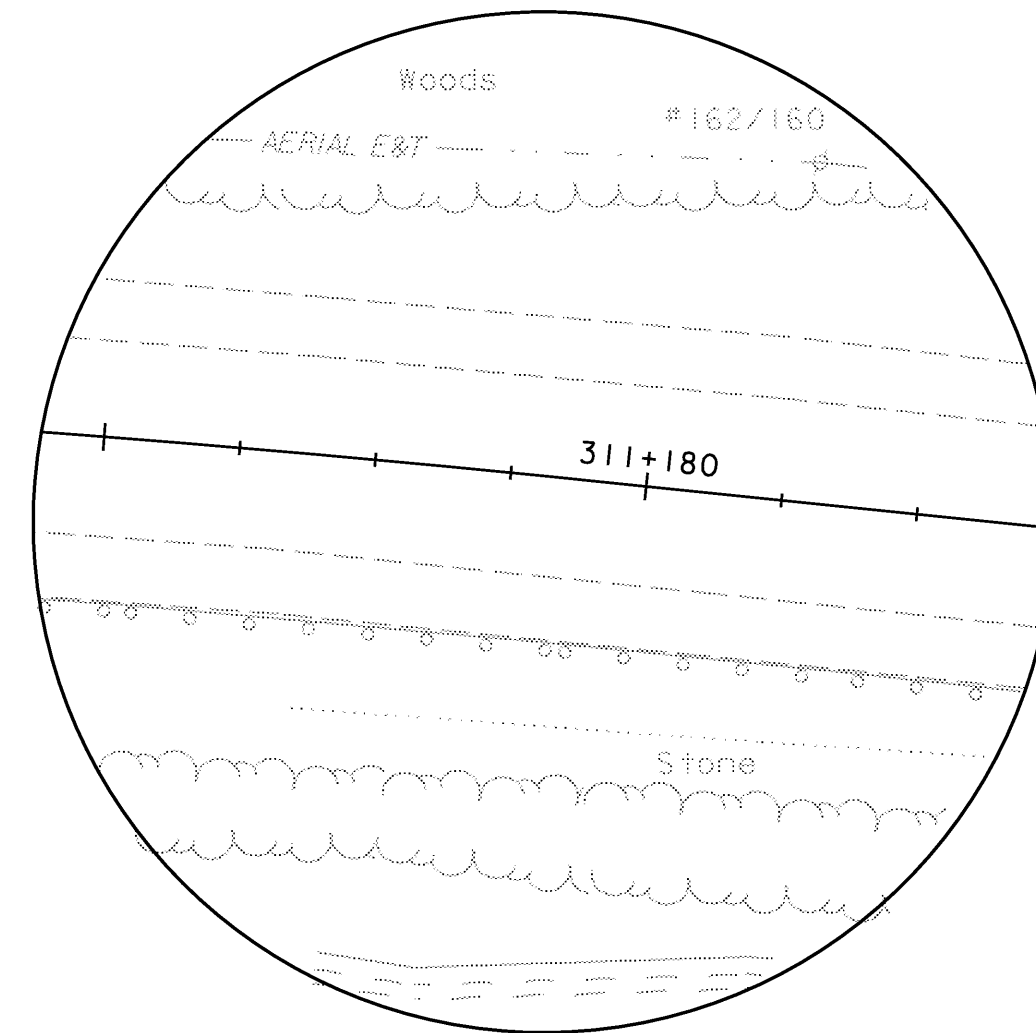
VT 30 PC STA 311+009.257  
NORTHING = 46155.4258  
EASTING = 490762.7801

**VT 30 PC STA 311+009.257**  
NOT TO SCALE



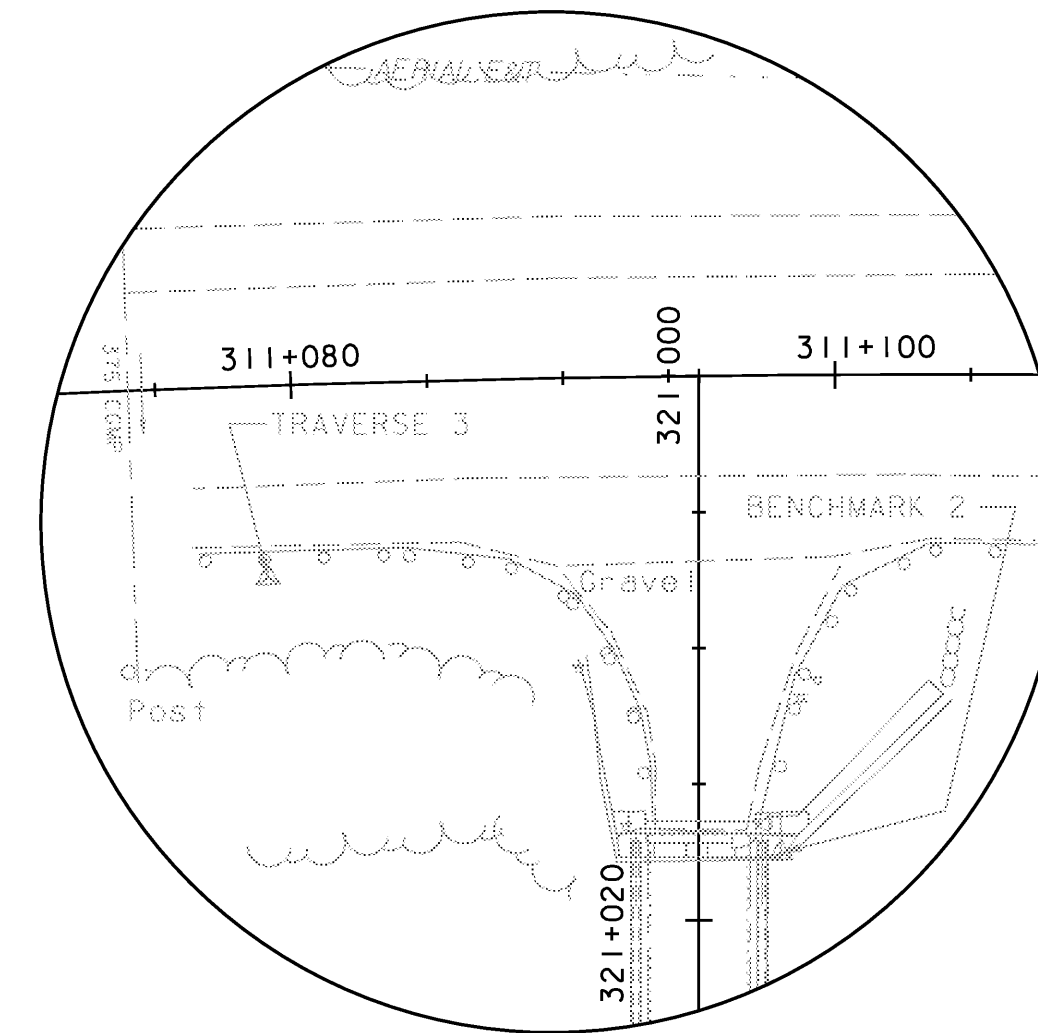
VT 30 PI STA 311+093.887 BK  
STA 311+093.124 AHD  
NORTHING = 46224.3715  
EASTING = 490713.7020

**VT 30 PI STA 311+093.887 BK**  
NOT TO SCALE



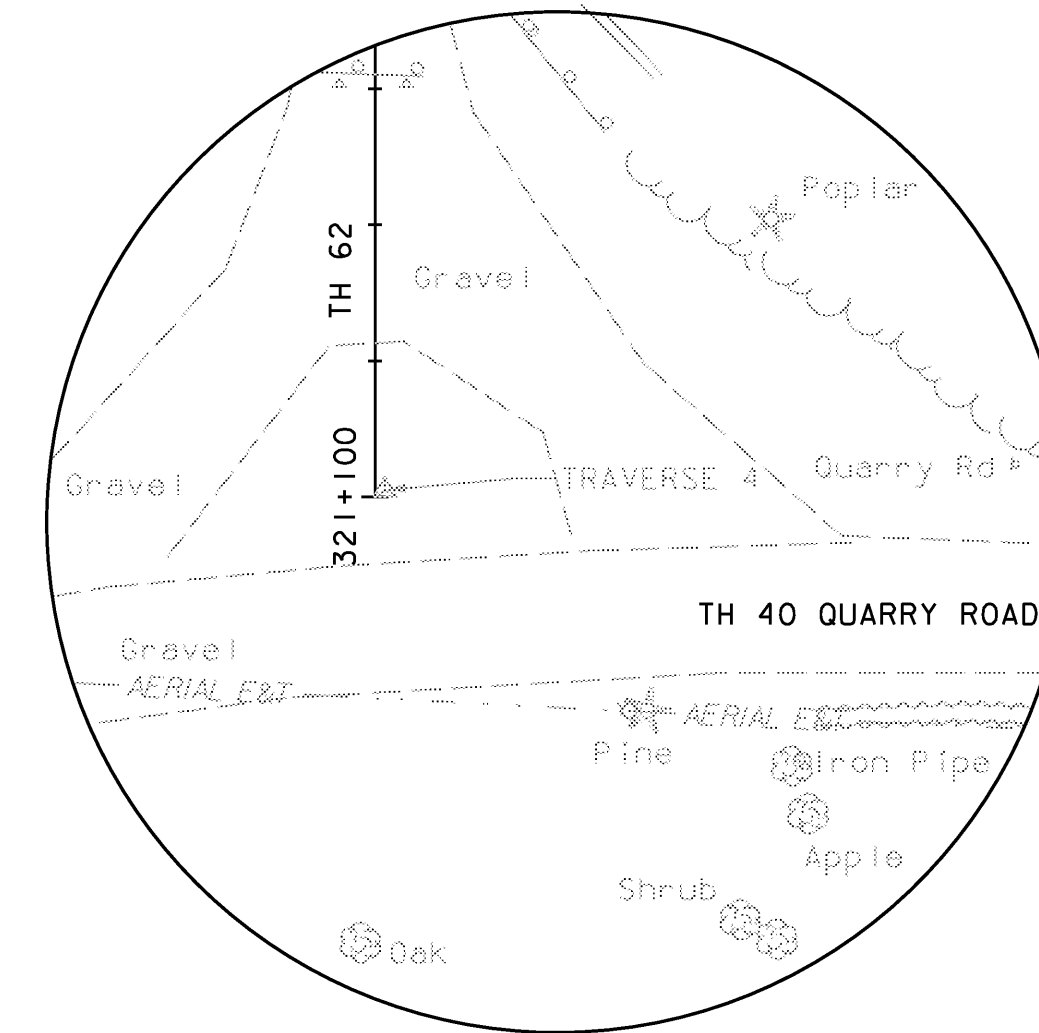
VT 30 PT STA 311+177.754  
NORTHING = 46302.7674  
EASTING = 490681.8231

**VT 30 PT STA 311+177.754**  
NOT TO SCALE



TH 62 PI STA 321+000  
NORTHING = 46228.0524  
EASTING = 490717.2982

**TH 62 PI STA 321+000**  
NOT TO SCALE



TH 62 PI STA 321+100  
NORTHING = 46274.9744  
EASTING = 490805.6066

**TH 62 PI STA 321+100**  
NOT TO SCALE

**NOTE:**

- 1. SURVEY PROVIDED BY VERMONT SURVEY AND ENGINEERING, INC. (1998).

DATUM  
VERTICAL NAVD 88  
HORIZONTAL NAD 83 (92)

**VANASSE HANGEN BRUSTLIN, INC.**

**STATE OF VERMONT  
AGENCY OF TRANSPORTATION**

Town Of	DUMMERSTON	Bridge No.	37
Highway No.	TH 62	Log Sta.	
		Surv. Sta.	
TH 62 OVER WEST RIVER			
<b>TIE SHEET</b>			
Designed By	VHB	Drawn By	C.L. CILLEY
Checked By	Date	Bridge Design Supervisor	
S. M. HODGDON	4/09	S. M. HODGDON Date 4/09	
PROJECT	DUMMERSTON	PROJECT NO.	BHO 1442 (28)
I.G.C. Info.			
Bridge Sheet No.	ZJ080TIE	Sheet	4 of 49