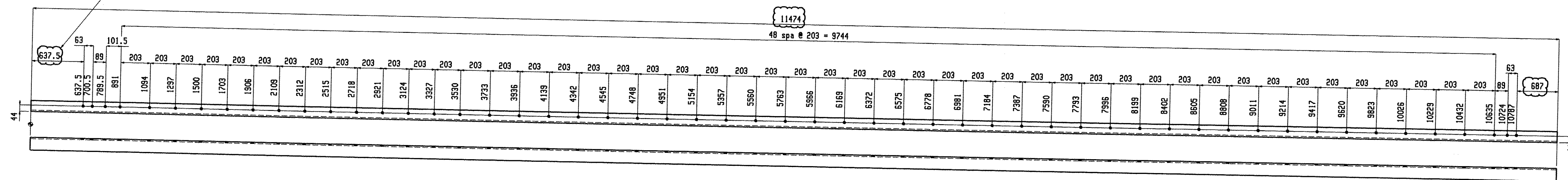
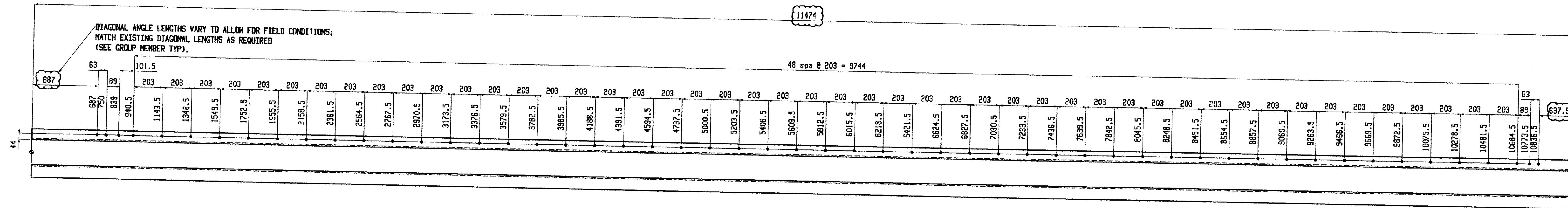


DIAGONAL ANGLE LENGTHS VARY TO ALLOW FOR FIELD CONDITIONS;
MATCH EXISTING DIAGONAL LENGTHS AS REQUIRED
(SEE GROUP MEMBER TYP).

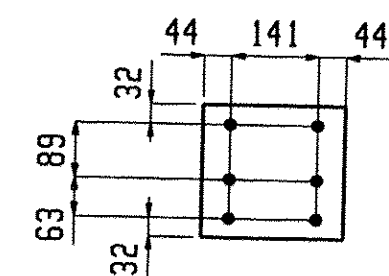


4 MISCS A47

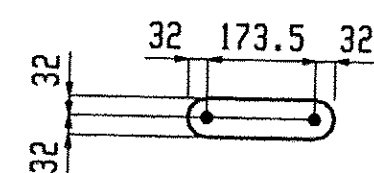
DIAGONAL ANGLE LENGTHS VARY TO ALLOW FOR FIELD CONDITIONS;
MATCH EXISTING DIAGONAL LENGTHS AS REQUIRED
(SEE GROUP MEMBER TYP).



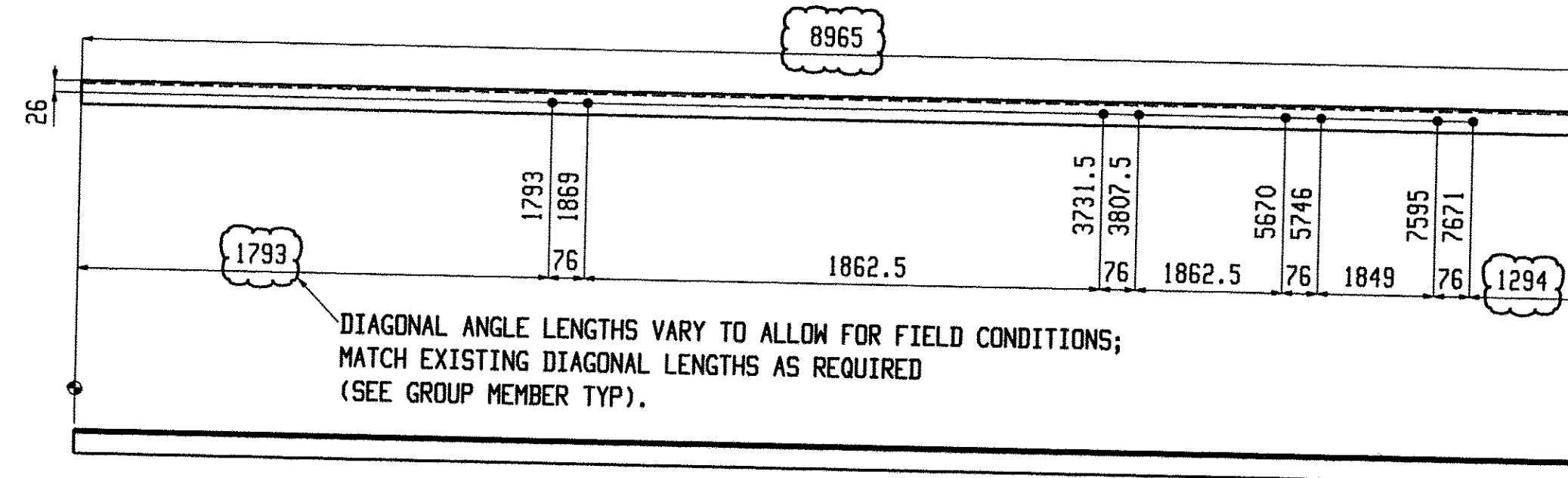
4 MISCS A48



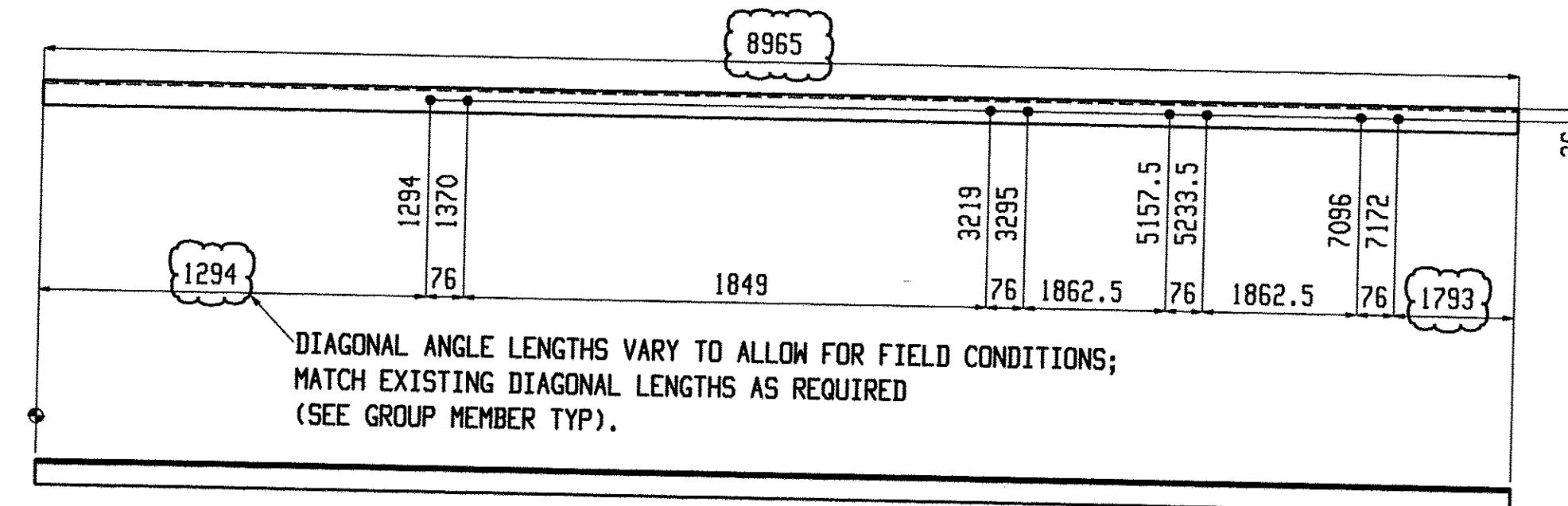
8 MISCS M12



388 MISCS M13



4 MISCS A49



4 MISCS A50

BILL OF MATERIAL

BILL OF MATERIAL

BILL OF MATERIAL

| Qty | Piece | Seq | Seq | Adv | Steel | Remarks | | |
|------|-------|-------------|--------|-----|-------|---------|-----------|---------|
| Tot. | Mark | Description | Length | NO. | Qty | ADM # | Grade | Remarks |
| 4 | A47 | MISC | 11474 | 1 | 4 | | M270M-345 | |
| 4 | A48 | MISC | 11474 | 1 | 4 | | M270M-345 | |
| 4 | M12 | MISC | | 1 | 8 | | | |

| Qty | Piece | Seq | Seq | Adv | Steel | Remarks | | |
|------|-------|-------------|--------|-----|-------|---------|-----------|---------|
| Tot. | Mark | Description | Length | NO. | Qty | ADM # | Grade | Remarks |
| 8 | M12 | PL6.4x216 | 229 | | | | M270M-345 | |
| 388 | M13 | MISC | | 1 | 388 | | | |
| 388 | M13 | PL6.4x64 | 237.5 | | | | M270M-345 | |
| 4 | A49 | MISC | | 1 | 4 | | | |
| 4 | A49 | L51x51x6.4 | 8965 | | | | M270M-345 | |

| Qty | Piece | Seq | Seq | Adv | Steel | Remarks | | |
|------|-------|-------------|--------|-----|-------|---------|-----------|---------|
| Tot. | Mark | Description | Length | NO. | Qty | ADM # | Grade | Remarks |
| 4 | A50 | MISC | | 1 | 4 | | | |
| 4 | A50 | L51x51x6.4 | 8965 | | | | M270M-345 | |

RECEIVED
OK'D BY: _____ OK'D BY: _____
NOV 17 2003
BY: _____ DATE: _____

NOTE: WORK THIS DRAWING WITH
GROUP MEMBER GM12&GM16

Renaud Bros. Inc.
283 Fort Bridgeman Rd. #2
Vernon, VT. 05354
Phone 1-802 257-7383

Holes: 21mm UNO
BOLTS: 19mm DIA. M164M-I GALV UNO
Steel GR: M270M-GR345 UNO
Paint: PER SPECS (GREEN) UNO
Surface Prep: PER SPECS

Project: **DUMMERSTON BRIDGE**
DUMMERSTON, VT

Date: 9-9-09
Job No. BHD 142(28)
Checked: MRS
Sheet No. 18

Total weight : 1721

Nov 08 2003 10:55:34 AM