

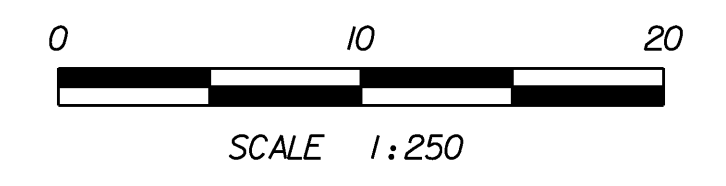
GENERAL NOTES FOR CONSTRUCTION

1. TWO-WAY TRAFFIC ON VT 30 AND TH 40 SHALL BE MAINTAINED OUTSIDE WORKING HOURS. NO EDGE OF PAVEMENT DROP-OFF GREATER THAN 125 mm OR SLOPES STEEPER THAN 1:3 WILL BE PERMITTED BEYOND WORKING HOURS WITHOUT TEMPORARY CONCRETE BARRIER PROTECTION. AT LOCATIONS WHERE FLARE BARRIER LAYOUTS CANNOT BE ACHIEVED, BARRIER BLUNT ENDS SHALL BE PROTECTED WITH AN ENERGY ABSORPTION ATTENUATOR AS APPROVED BY THE RESIDENT ENGINEER.
2. PROVIDE MINIMUM 3.6 m TRAVEL LANES FOR TWO-WAY TRAFFIC ON VT 30.

LEGEND

- WORK AREA
- TEMPORARY TRAFFIC BARRIER
- ENERGY ABSORPTION ATTENUATOR
- INDICATES TRAFFIC FLOW
- TYPE III BARRICADES
- TRAFFIC CONE OR DRUM

NOTE:
TEMPORARY STRUCTURE, SHORING AND STAGING AREAS NOT SHOWN.



**STATE OF VERMONT
AGENCY OF TRANSPORTATION**

Town Of	DUMMERSTON	Bridge No.	37
Highway No.	TH 62	Log Sta.	
		Surv. Sta.	
TH 62 OVER WEST RIVER			
TRAFFIC CONTROL PLAN			
Designed By	C.L. CILLEY	Drawn By	C.L. CILLEY
Checked By	S.M. HODGDON	Date	4/09
		Bridge Design Supervisor	S.M. HODGDON Date 4/09
PROJECT	DUMMERSTON	PROJECT NO.	BHO 1442 (28)
I.G.C. Info.			
Bridge Sheet No.	ZJ080TCl	Sheet	7 of 49

VANASSE HANGEN BRUSTLIN, INC.