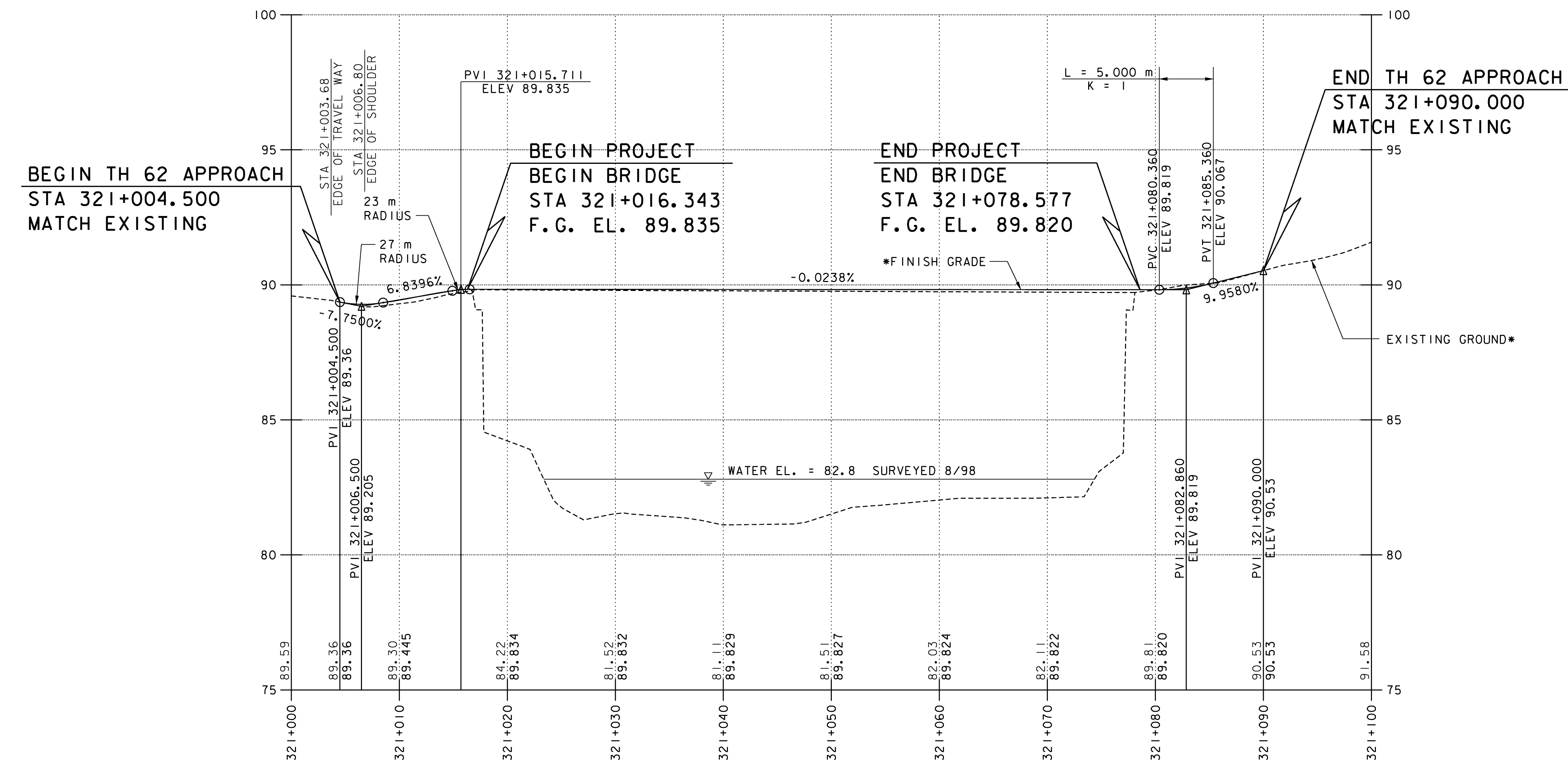


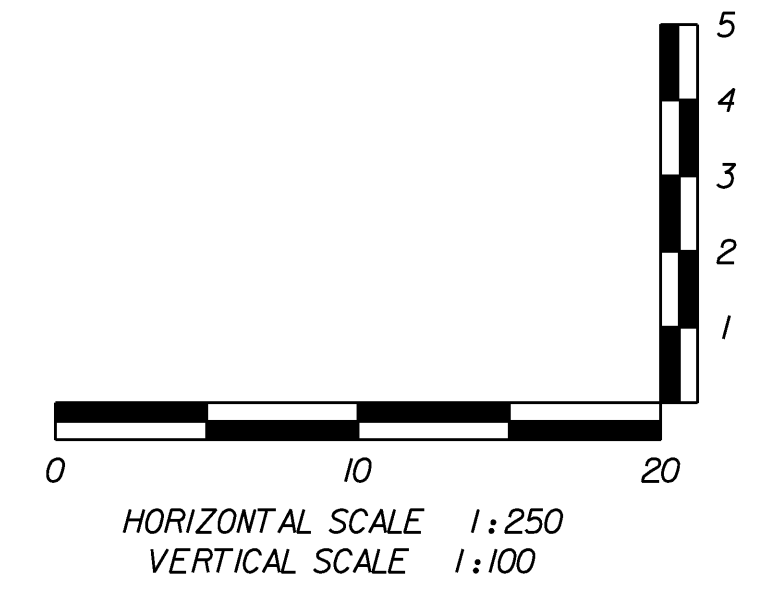
# TH 62



\* ELEVATIONS SHOWN TO THREE DECIMAL PLACES ARE FINISH GRADE ALONG Q TH 62. ELEVATIONS SHOWN TO TWO DECIMAL PLACES ARE EXISTING GROUND ALONG Q TH 62.

DATUM  
VERTICAL NAVD 88  
HORIZONTAL NAD 83 (92)

VANASSE HANGEN BRUSTLIN, INC.



<b>STATE OF VERMONT AGENCY OF TRANSPORTATION</b>	
Town Of	DUMMERSTON
Highway No.	TH 62
TH 62 OVER WEST RIVER	
<b>TH 62 PROFILE</b>	
Designed By	C.L. CILLEY
Checked By	S.M. HODGDON
PROJECT	DUMMERSTON
I.G.C. Info.	
Bridge Sheet No.	ZJ080PRI

Bridge No.	37
Log Sta.	
Surv. Sta.	
PROJECT NO.	BHO 1442 (28)
Sheet	6 of 49