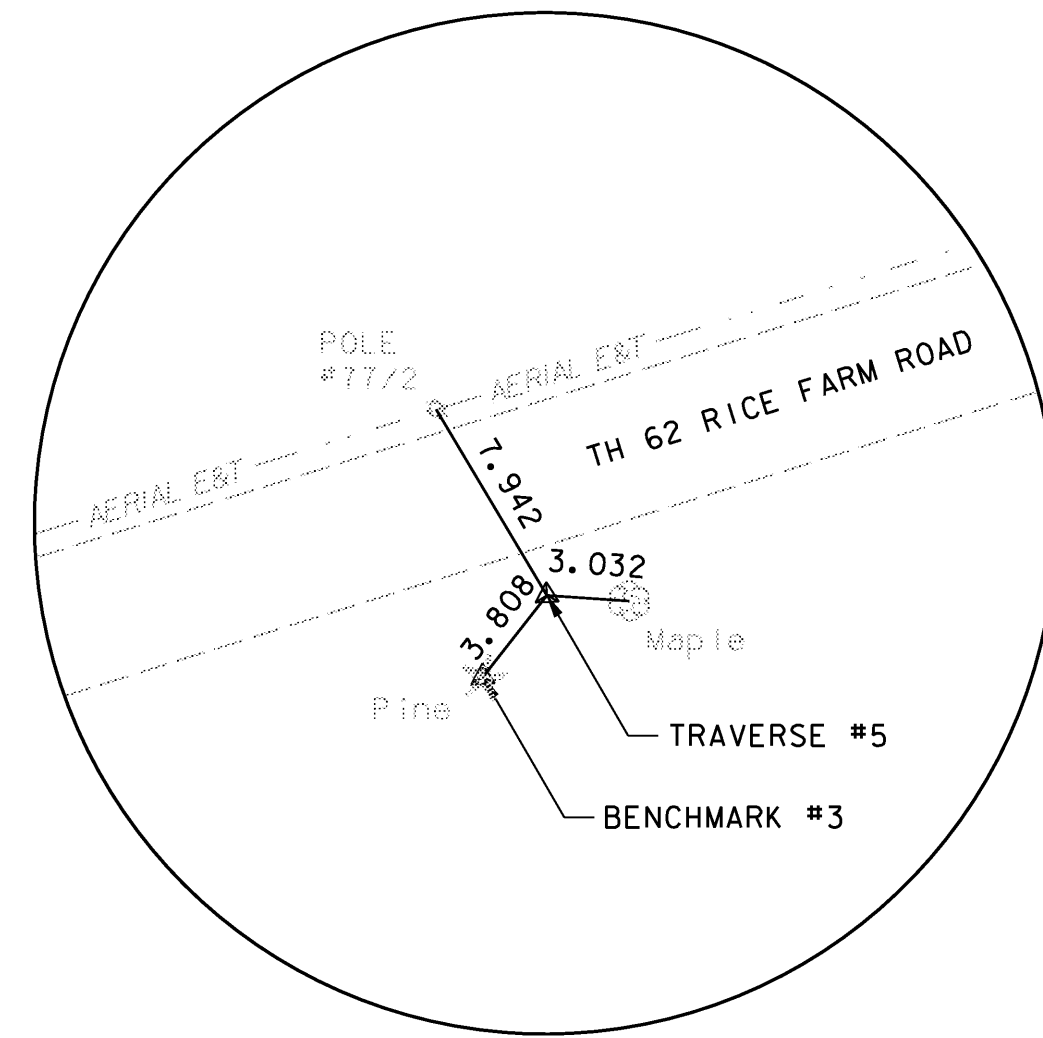


SURVEY DISC STAMPED STICKNEY 1988
DISC SET ON BRIDGE ABUTMENT

BENCHMARK #2
NORTHING = 46238.9390
EASTING = 490731.3521
ELEVATION = 89.09

BENCHMARK #2
NOT TO SCALE

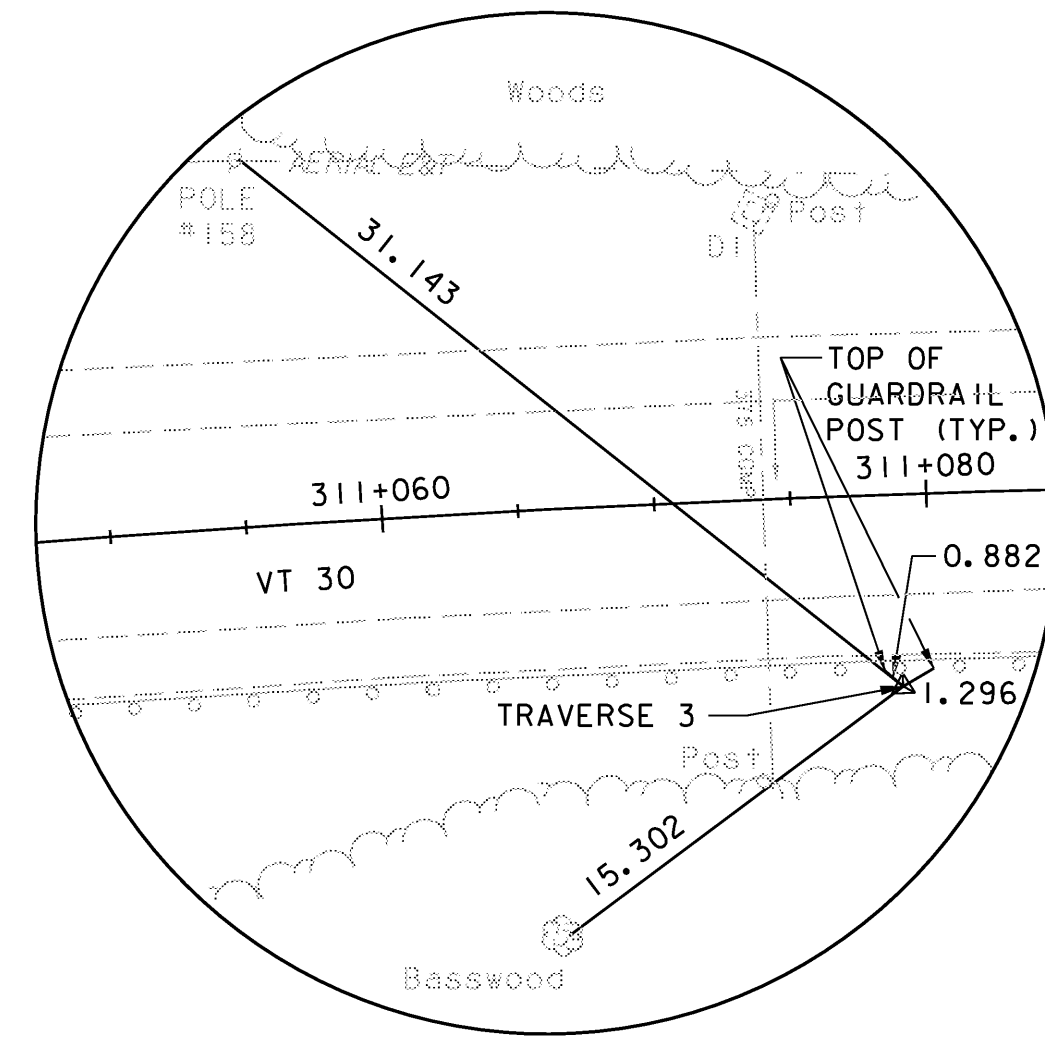


LAG BOLT IN LARGE PINE

BENCHMARK #3
NORTHING = 46169.3250
EASTING = 490922.6800
ELEVATION = 91.90

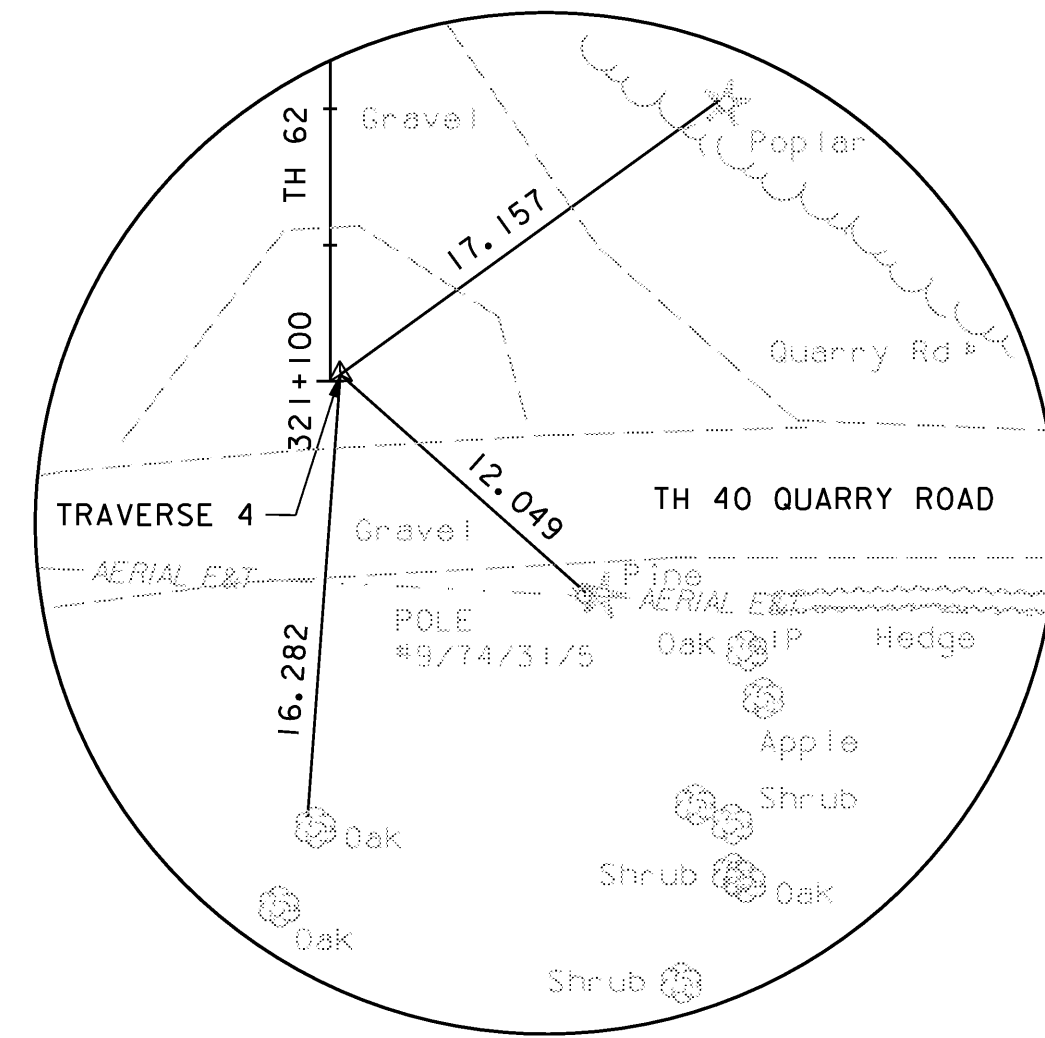
TRAVERSE #5
NORTHING = 46169.9890
EASTING = 490918.9343
ELEVATION = 91.39

BENCHMARK #3
NOT TO SCALE



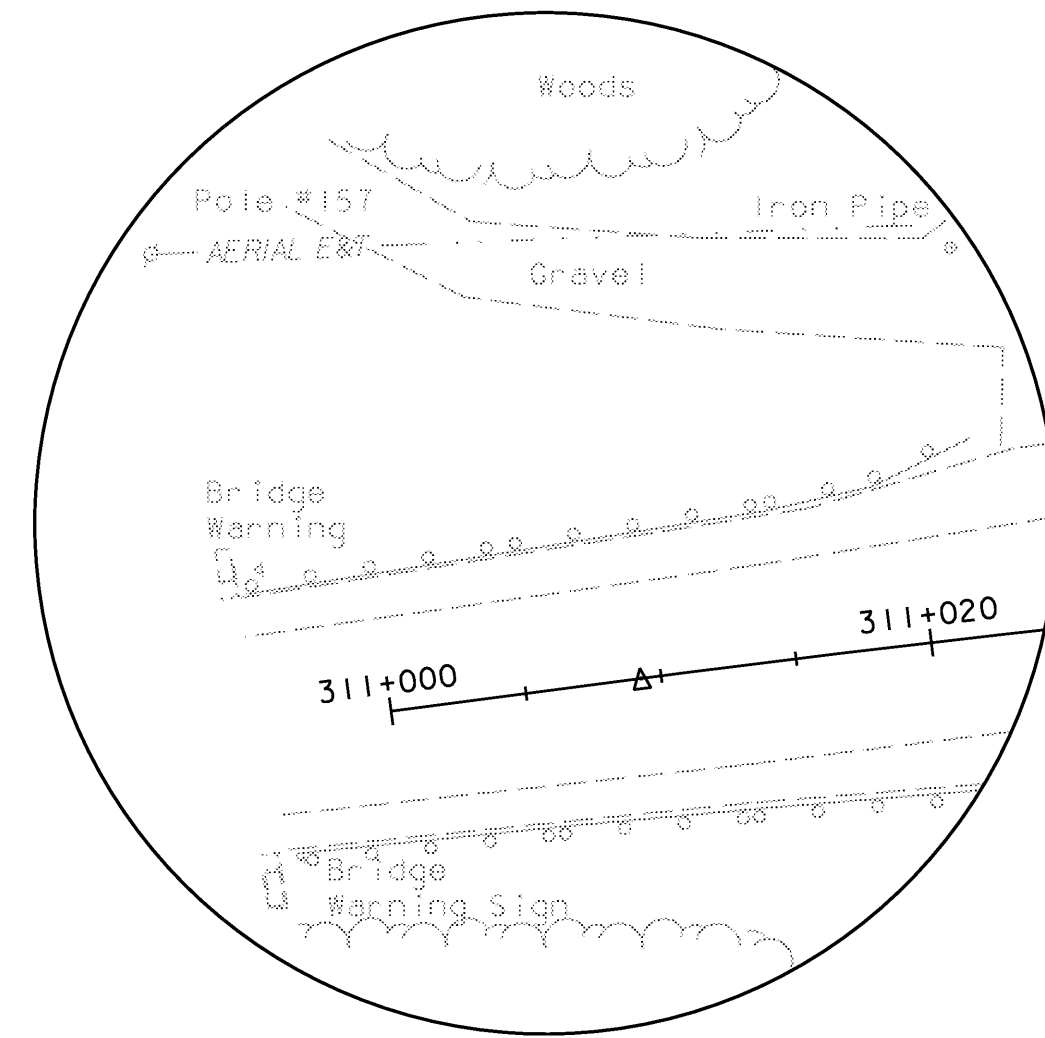
TRAVERSE #3
NORTHING = 46217.5503
EASTING = 490731.2791
ELEVATION = 88.9226

TRAVERSE #3
NOT TO SCALE



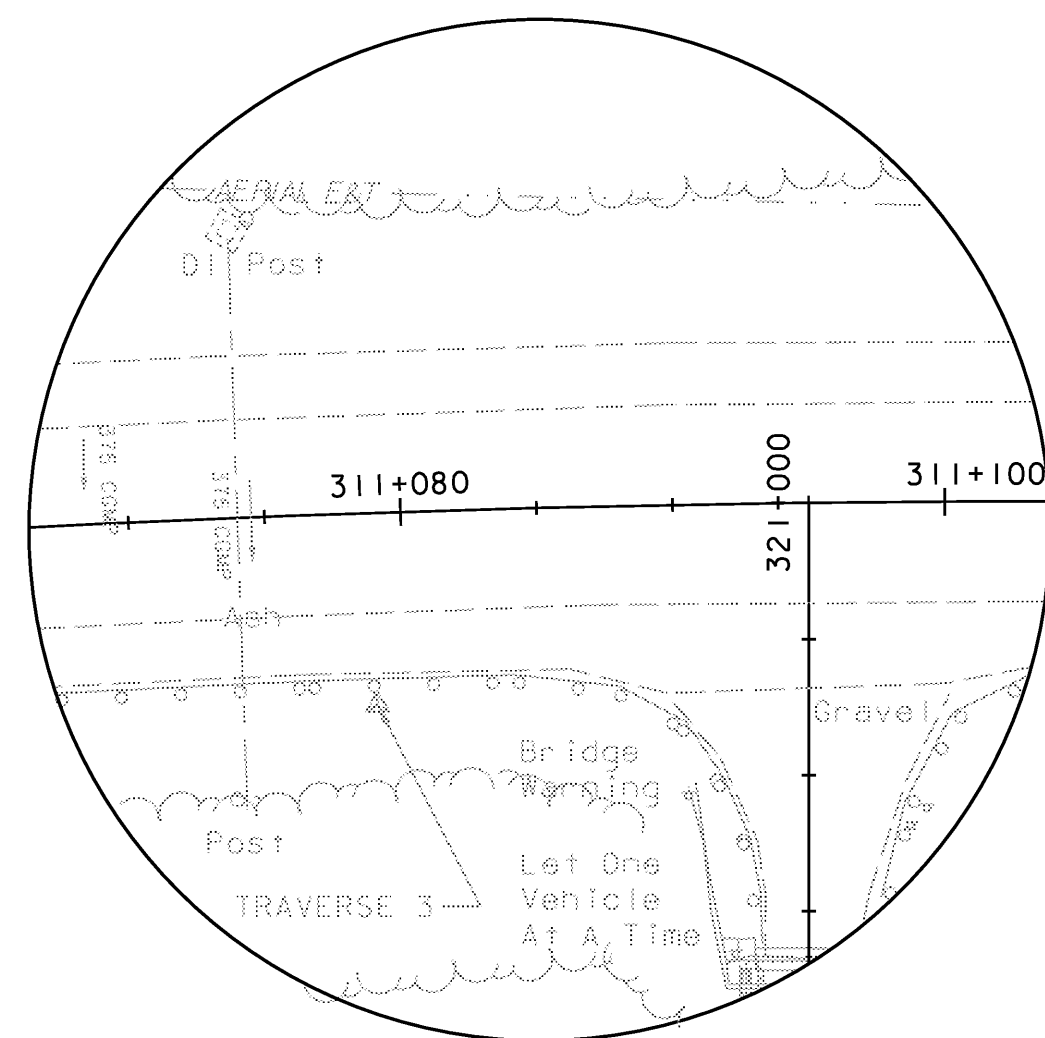
TRAVERSE #4
NORTHING = 46275.1862
EASTING = 490805.2115
ELEVATION = 91.6137

TRAVERSE #4
NOT TO SCALE



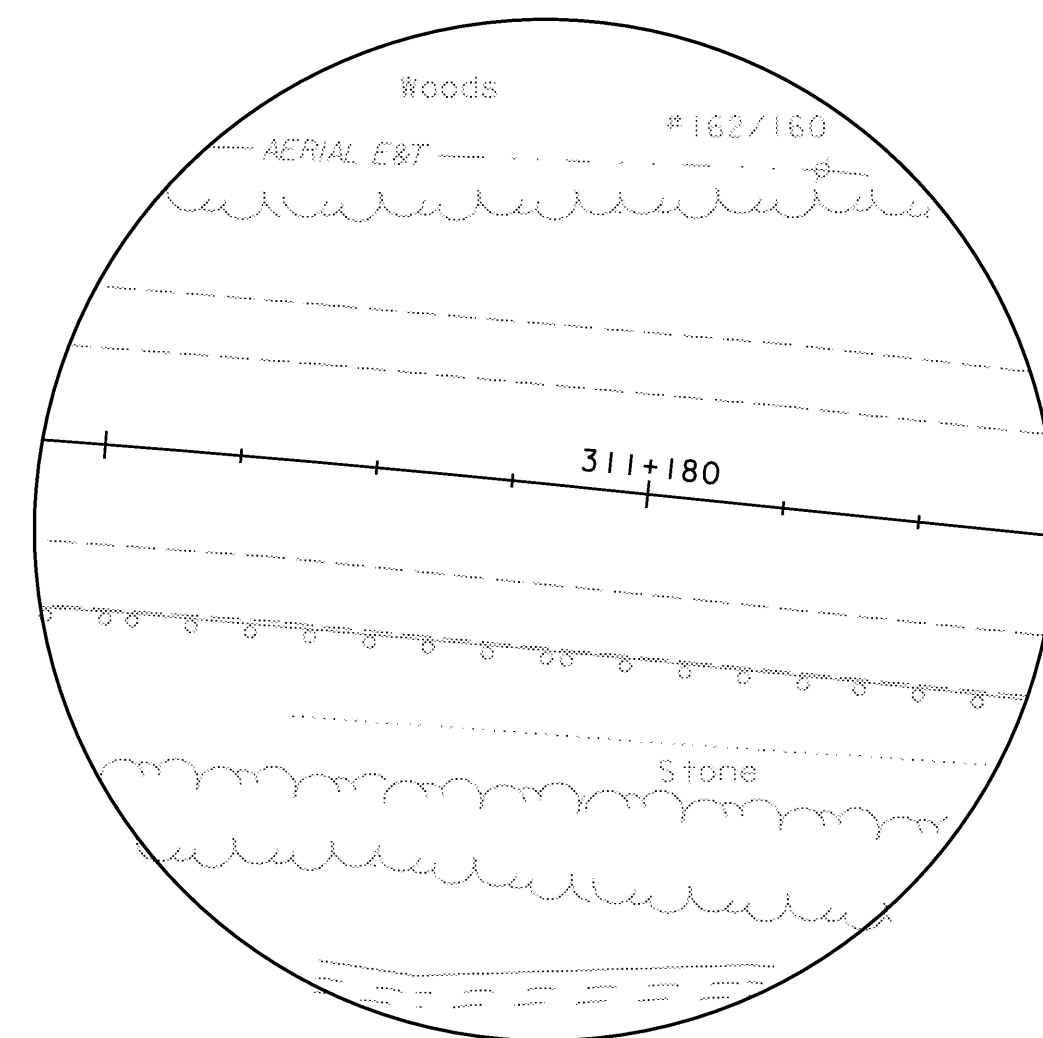
VT 30 PC STA 311+009.257
NORTHING = 46155.4258
EASTING = 490762.7801

VT 30 PC STA 311+009.257
NOT TO SCALE



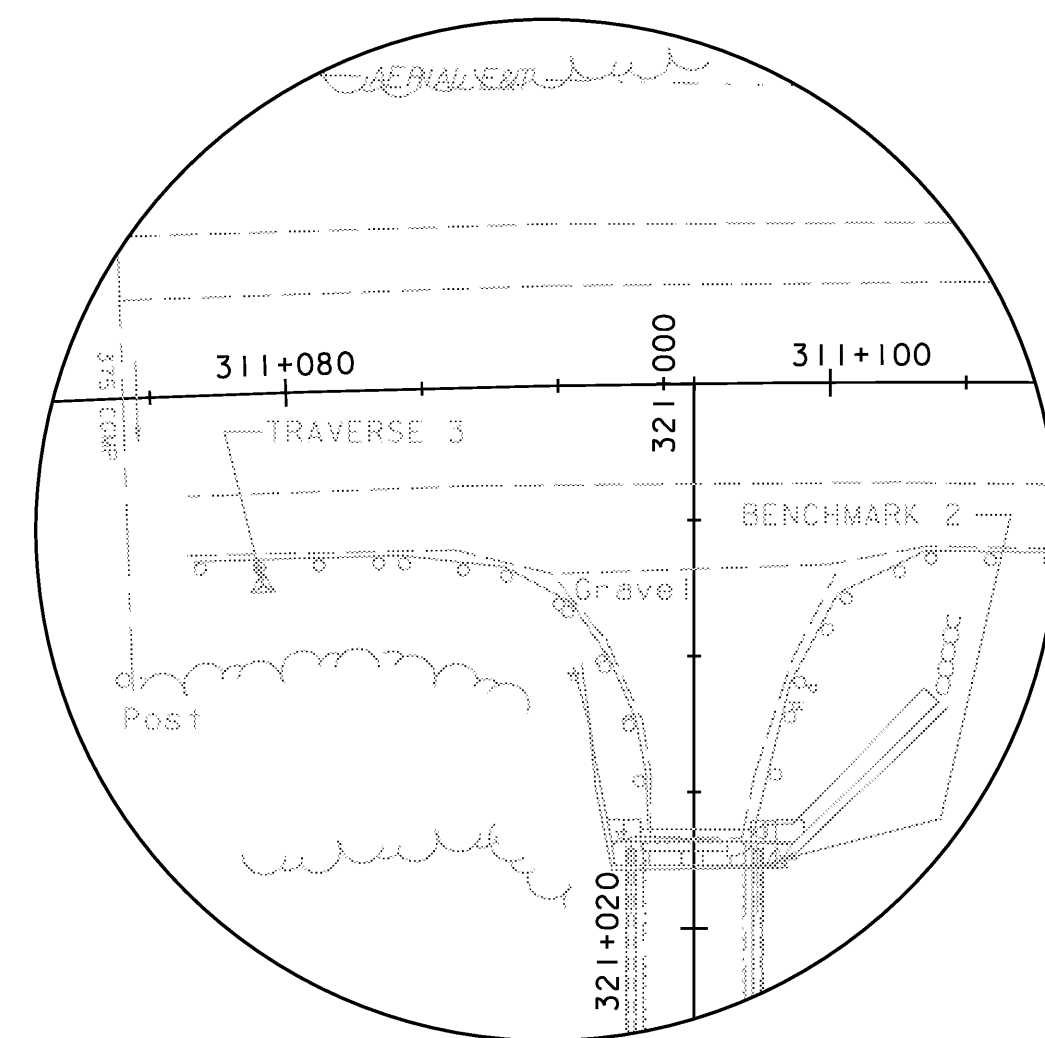
VT 30 PI STA 311+093.887 BK
STA 311+093.124 AHD
NORTHING = 46224.3715
EASTING = 490713.7020

VT 30 PI STA 311+093.887 BK
NOT TO SCALE



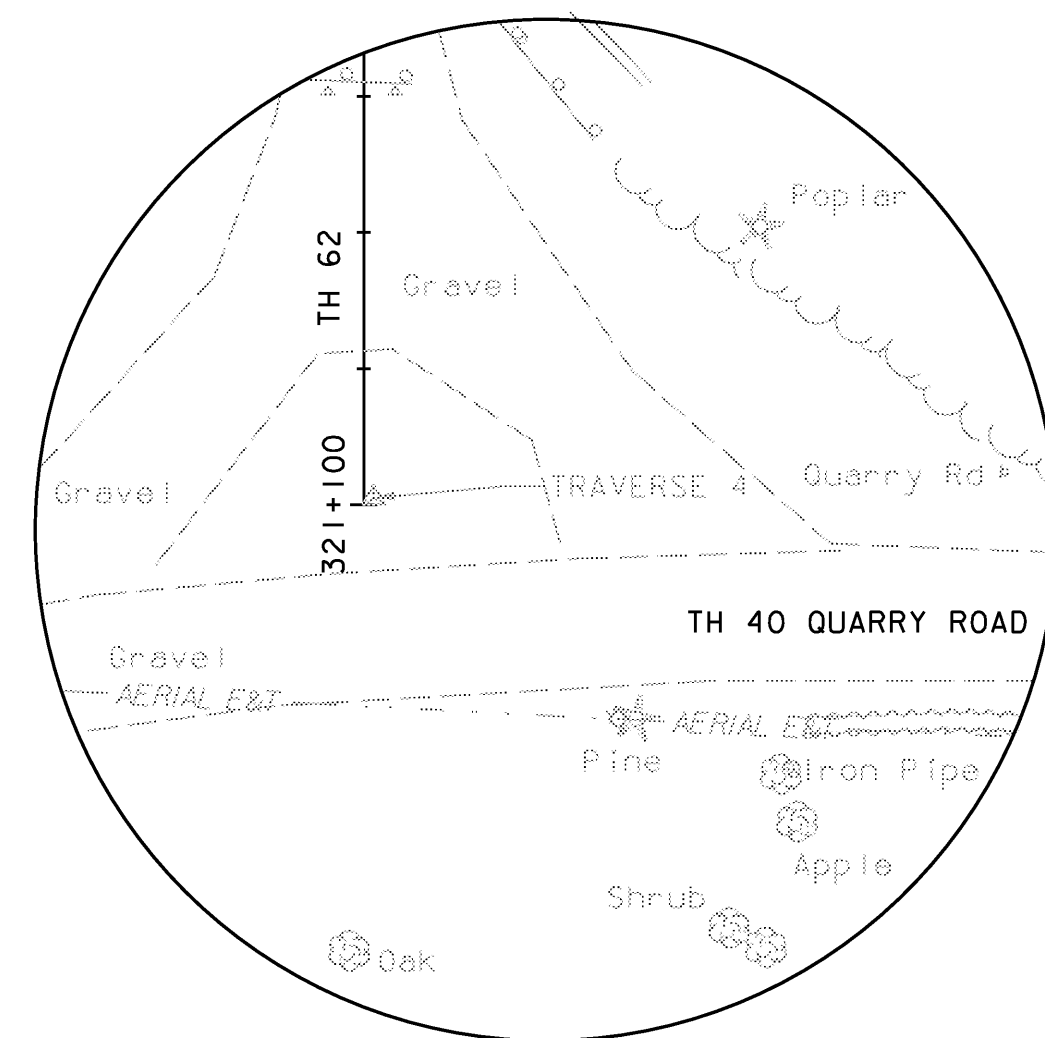
VT 30 PT STA 311+177.754
NORTHING = 46302.7674
EASTING = 490681.8231

VT 30 PT STA 311+177.754
NOT TO SCALE



TH 62 PI STA 321+000
NORTHING = 46228.0524
EASTING = 490717.2982

TH 62 PI STA 321+000
NOT TO SCALE



TH 62 PI STA 321+100
NORTHING = 46274.9744
EASTING = 490805.6066

TH 62 PI STA 321+100
NOT TO SCALE

NOTE:

1. SURVEY PROVIDED BY VERMONT SURVEY AND ENGINEERING, INC. (1998).

**STATE OF VERMONT
AGENCY OF TRANSPORTATION**

Town Of	DUMMERSTON	Bridge No.	37
Highway No.	TH 62	Log Sta.	
		Surv. Sta.	
TH 62 OVER WEST RIVER			

TIE SHEET

Designed By	VHB	Drawn By	C.L. CILLEY
Checked By	Date	Bridge Design Supervisor	
S.M. HODGDON	4/09	S.M. HODGDON	Date 4/09

PROJECT	DUMMERSTON	PROJECT NO.	BHO 1442 (28)
---------	------------	-------------	---------------

I.G.C. Info.	Bridge Sheet No.	ZJ080TIE	Sheet	4 of 49
--------------	------------------	----------	-------	---------

DATUM
VERTICAL NAVD 88
HORIZONTAL NAD 83 (92)

VANASSE HANGEN BRUSTLIN, INC.