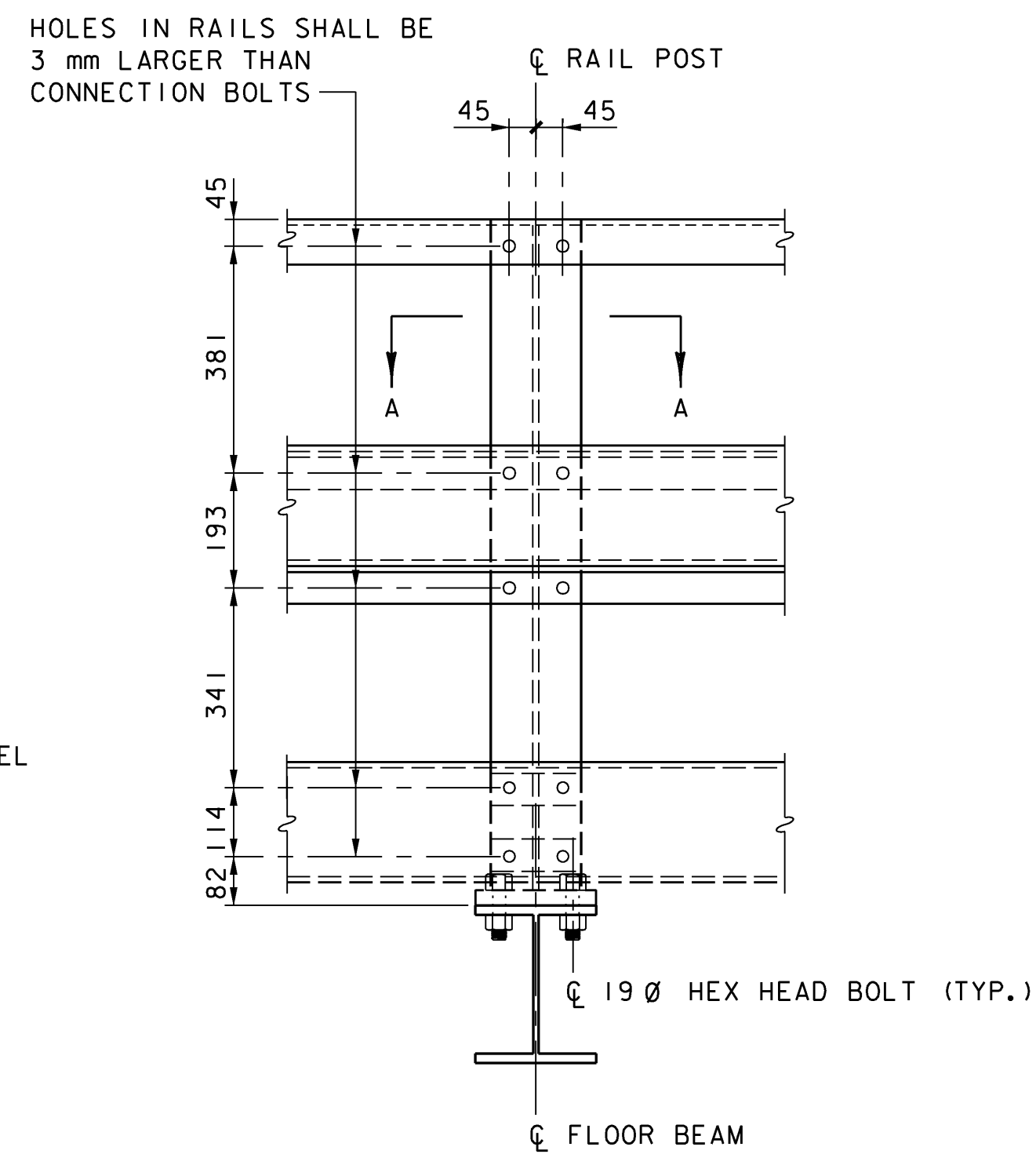
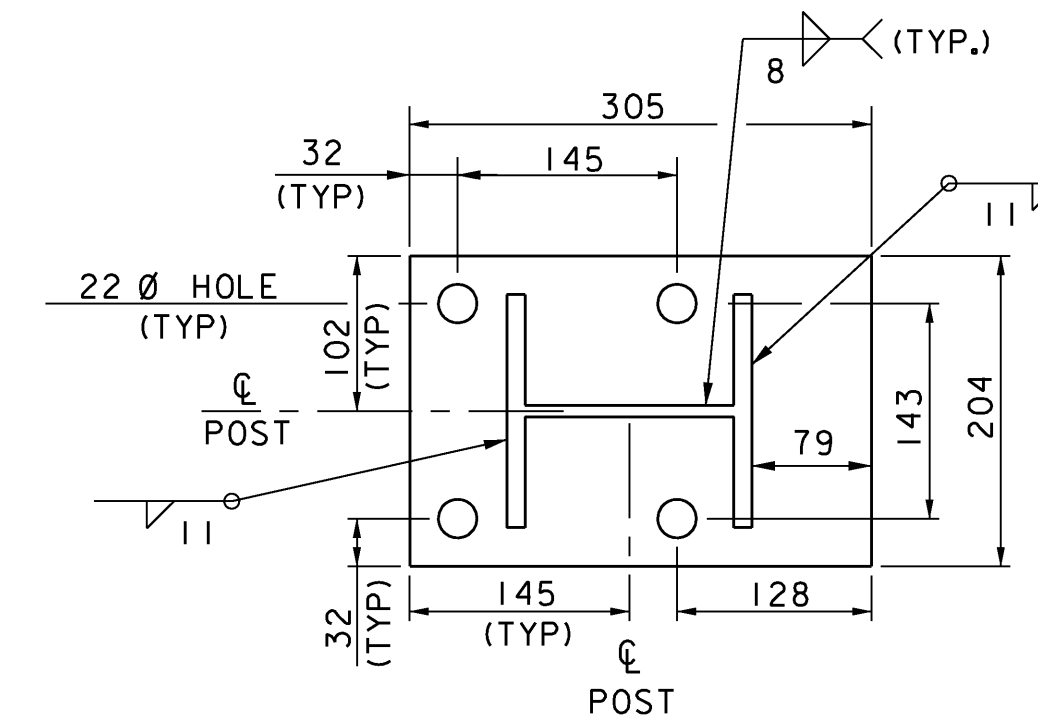
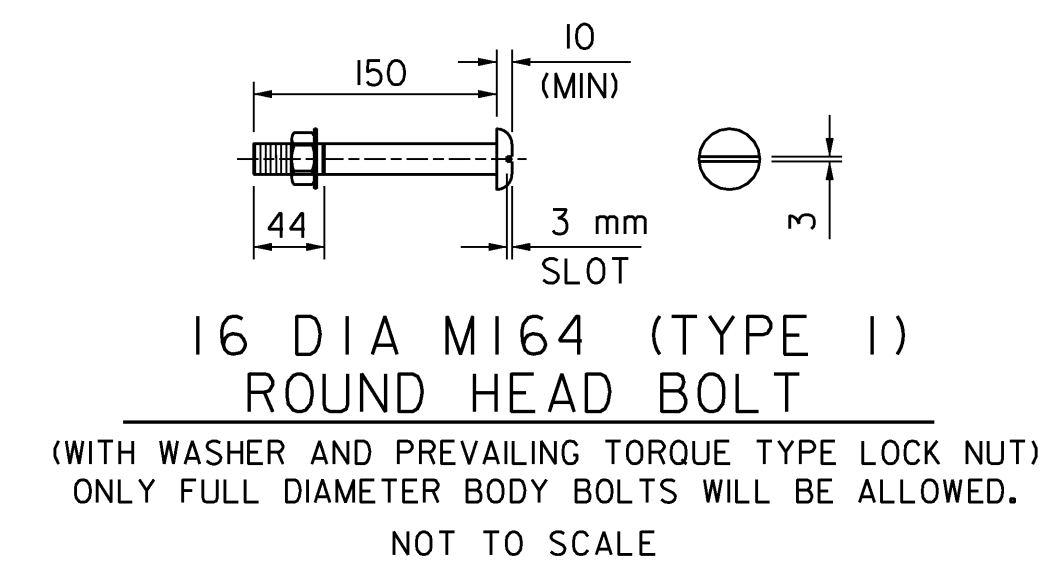


TYPICAL SECTION
SCALE: 1:10



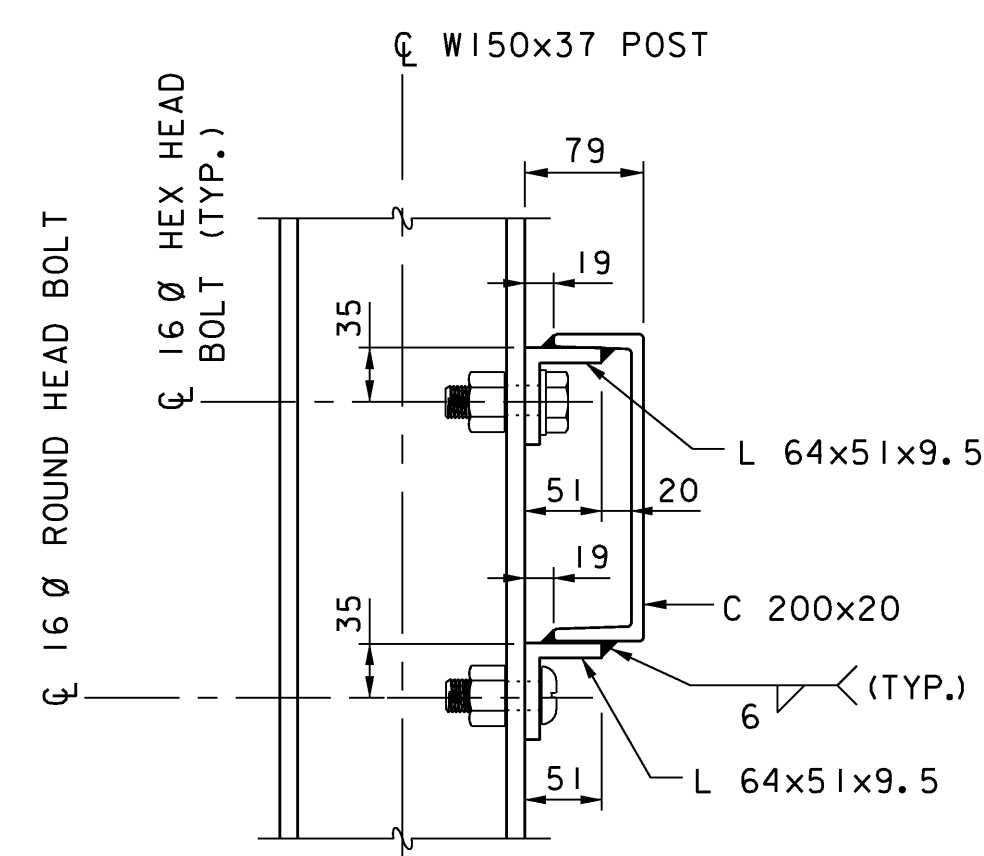
ELEVATION VIEW
SCALE: 1:10



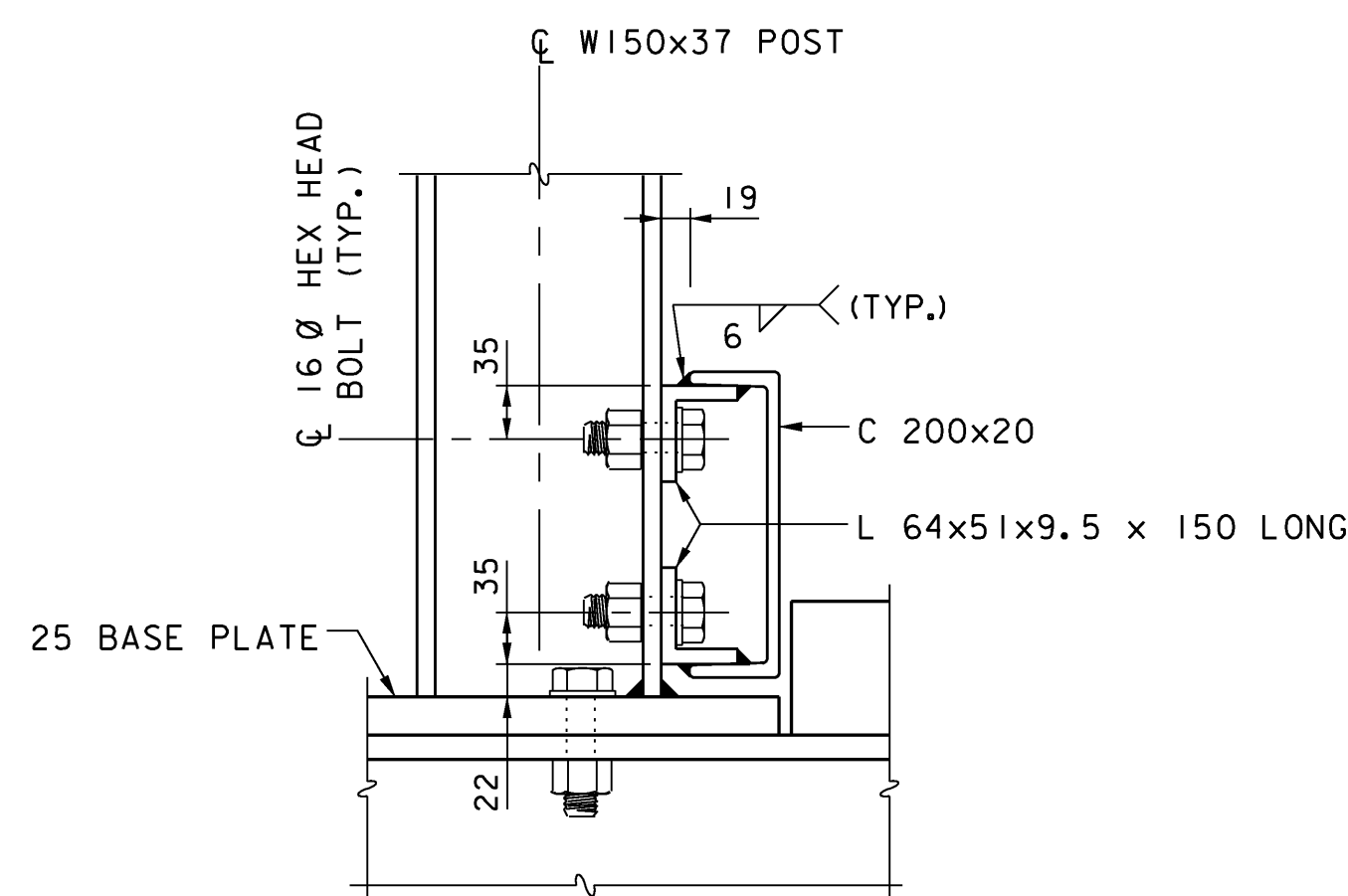
POST & BASE PLATE
SCALE: 1:5

BRIDGE RAIL NOTES:

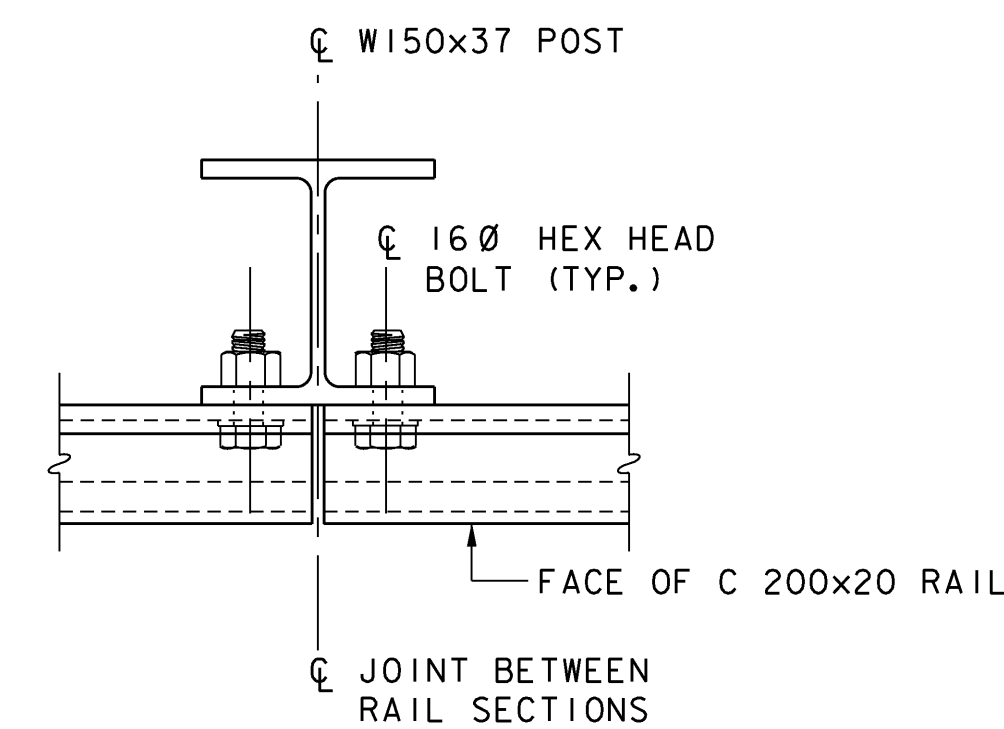
- ALL BRIDGE RAIL STRUCTURAL STEEL SHALL CONFORM TO AASHTO M270M, GRADE 345 PAINTED, EXCEPT FOR THE TOP HANDRAIL ANGLE WHICH MAY BE GRADE 250 PAINTED AT THE FABRICATOR'S OPTION. ALL BRIDGE RAIL STRUCTURAL STEEL SHALL CONFORM TO ALL APPLICABLE SUBSECTIONS OF SECTION 506. ALL BRIDGE RAIL STRUCTURAL STEEL SHALL BE PAID FOR UNDER ITEM 900.640, SPECIAL PROVISION (BRIDGE RAILING, TRUSS).
- ALL BRIDGE RAIL CONNECTIONS SHALL BE MADE WITH TYPE 1 HIGH STRENGTH BOLTS MEETING AASHTO M164M. BOLT DIAMETERS SHALL BE AS SHOWN ON THE PLANS. HOLES IN L64x51 CONNECTION ANGLES AND L76x64 TOP RAILS SHALL BE FIELD MARKED AND DRILLED TO ENSURE PROPER FIT UP OF RAIL SECTIONS.
- ALL EXPOSED CUT, SHEARED OR ROLLED EDGES ON ALL RAIL MEMBERS EXCEPT THE FASCIA FLANGE OF THE RAIL POST SHALL BE ROUNDED TO A 2 mm RADIUS AND SHALL BE FREE OF BURRS.
- RAIL POSTS SHALL BE SET NORMAL TO GRADE.
- SECTIONS OF RAIL AND CURB SHALL BE ATTACHED TO A MINIMUM OF TWO RAIL POSTS AND PREFERABLY TO AT LEAST FOUR POSTS. JOINTS BETWEEN RAIL AND CURB SECTIONS SHALL BE LOCATED ONLY AT RAIL POSTS.
- SEE SHEET 22 FOR BRIDGE RAIL POST LAYOUT. LAYOUT IS SYMMETRIC ABOUT TRUSS PANEL POINT L8.
- SEE SHEET 27 FOR BRIDGE RAIL END TRANSITION DETAILS.



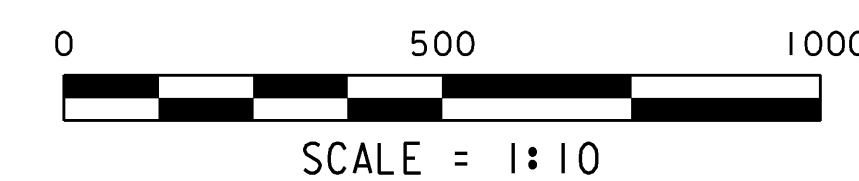
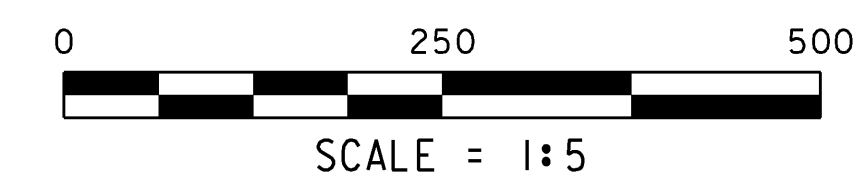
DETAIL A
SCALE: 1:5



DETAIL B
SCALE: 1:5



SECTION A-A
SCALE: 1:5



VANASSE HANGEN BRUSTLIN, INC.

**STATE OF VERMONT
AGENCY OF TRANSPORTATION**

Town Of	DUMMERSTON	Bridge No.	37
Highway No.	TH 62	Log Sta.	
		Surv. Sta.	
TH 62 OVER WEST RIVER			
BRIDGE RAIL DETAILS			
Designed By	A. J. CRAWFORD	Drawn By	K. D. WENTWORTH
Checked By	Date	Bridge Design Supervisor	
T. S. BRYANT	4/09	S. M. HODGDON	Date 4/09
PROJECT	DUMMERSTON	PROJECT NO.	BHO 1442 (28)
I.G.C. Info.			
Bridge Sheet No.	ZJ080BRL	Sheet	26 of 49