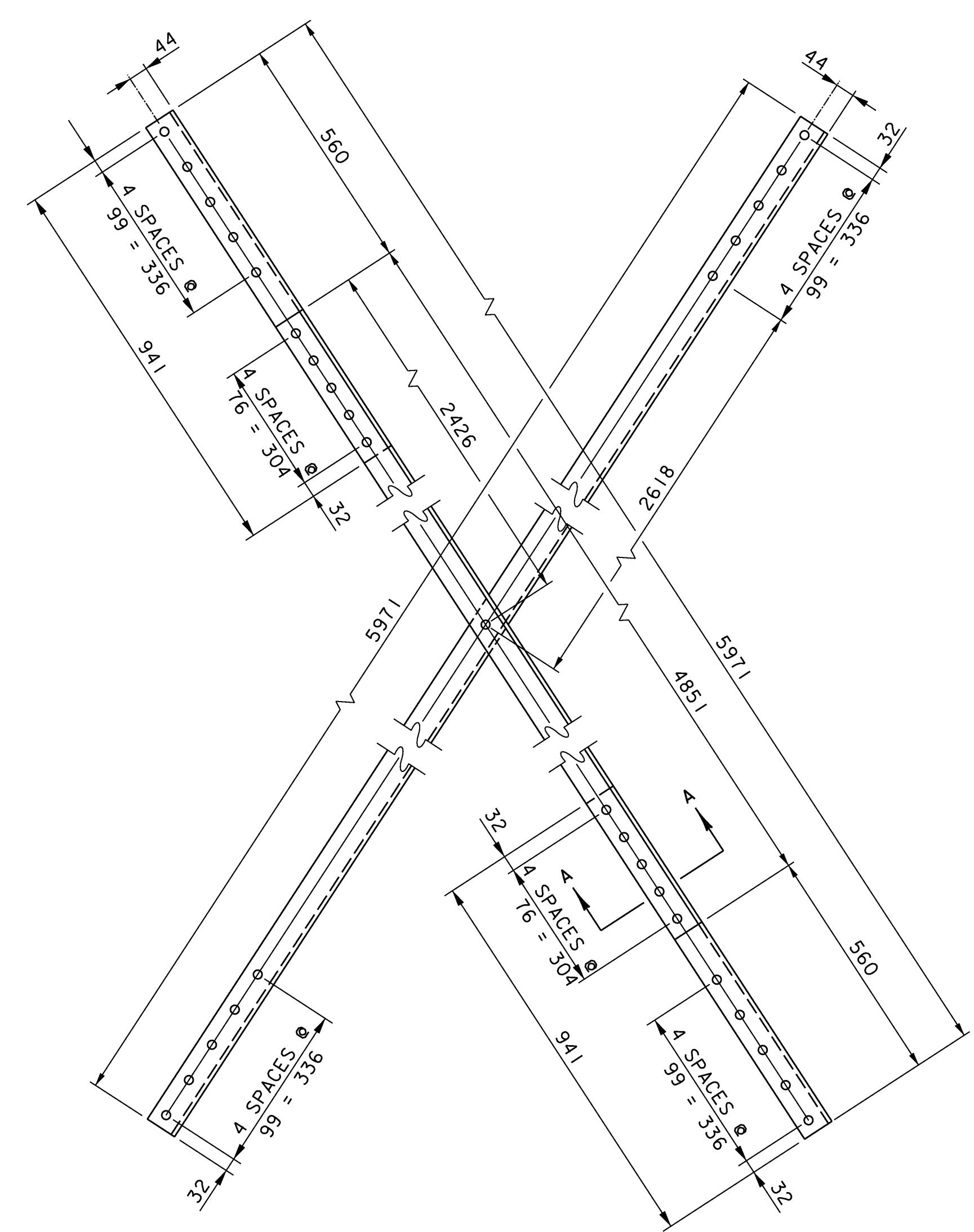
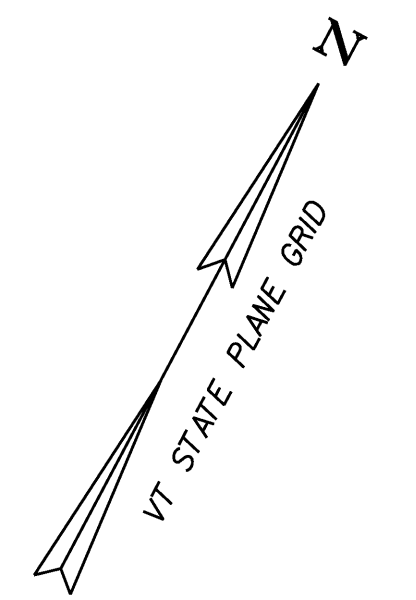


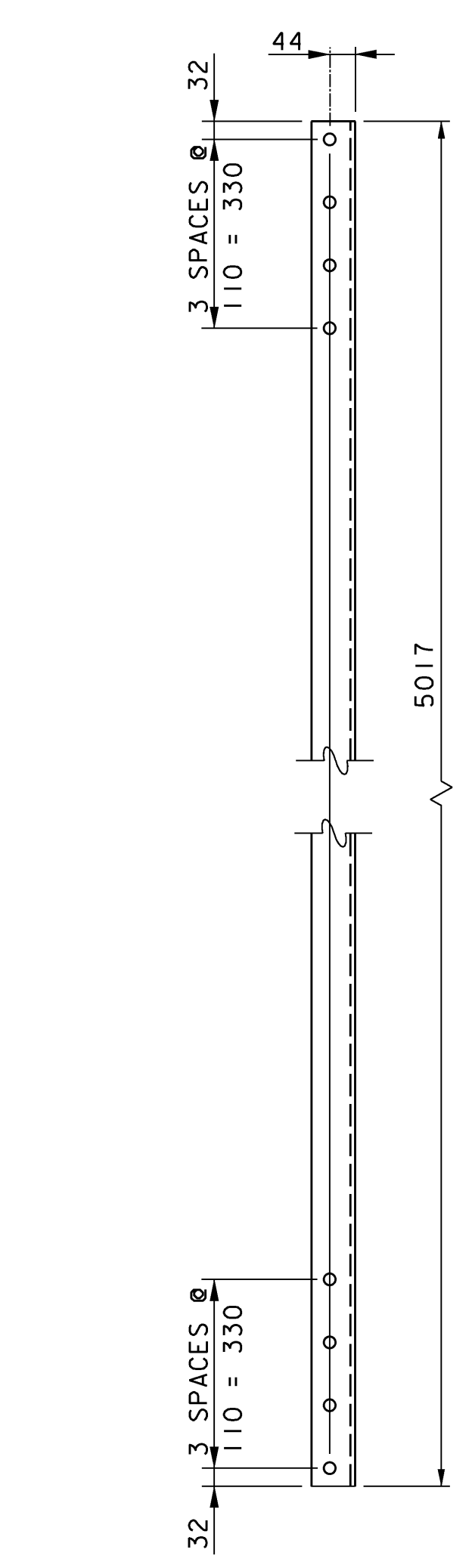
**BOTTOM LATERAL BRACING FRAMING PLAN**  
SCALE: 1:100



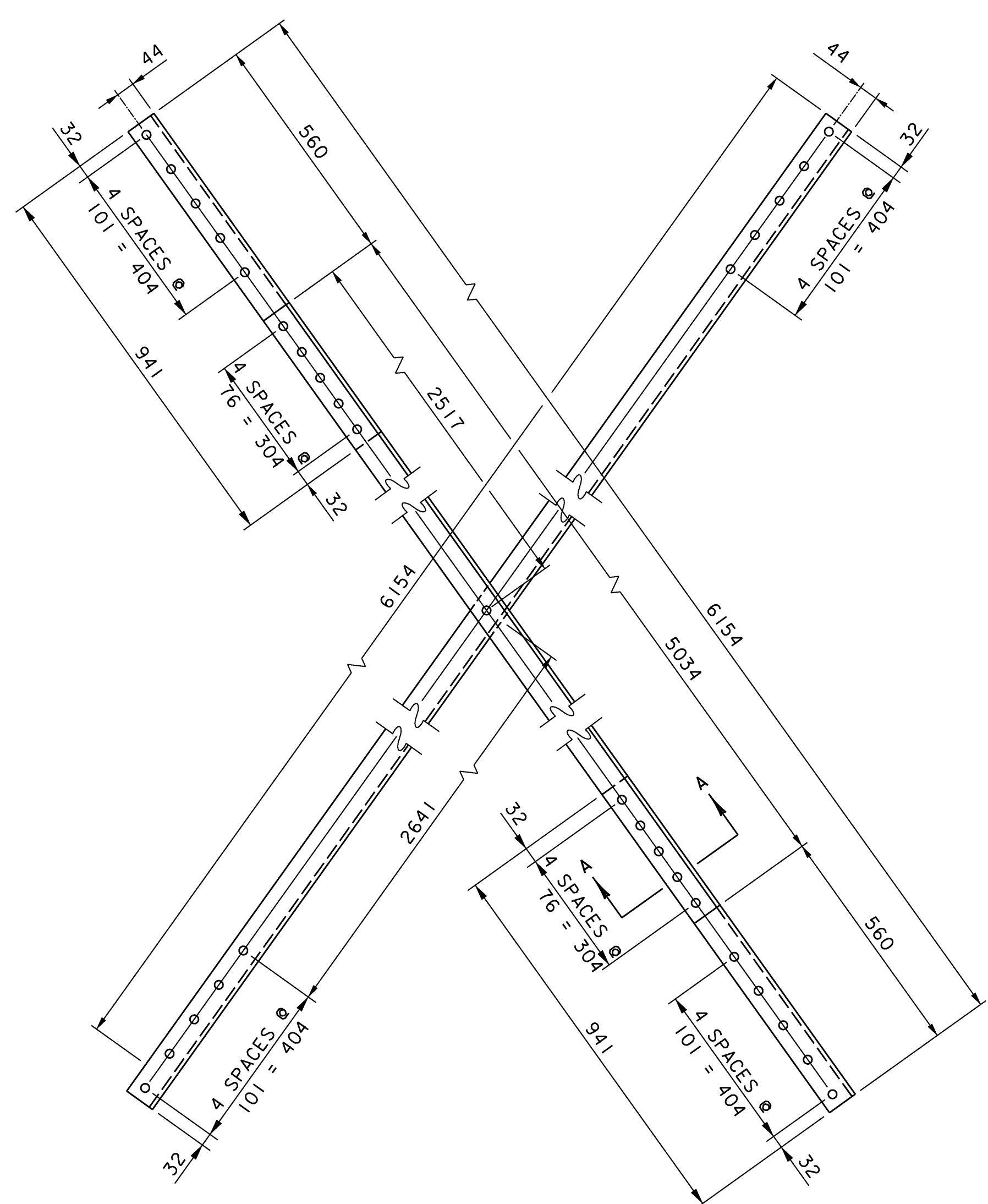
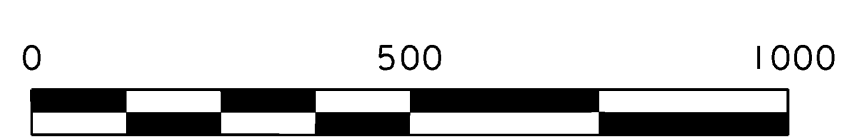
DIMENSIONS PROVIDED IN THESE PLANS SHALL NOT BE USED FOR FABRICATION PURPOSES. ALL NECESSARY DIMENSIONS AND CONFIGURATIONS SHALL BE DETERMINED FROM ACTUAL FIELD MEASUREMENTS.



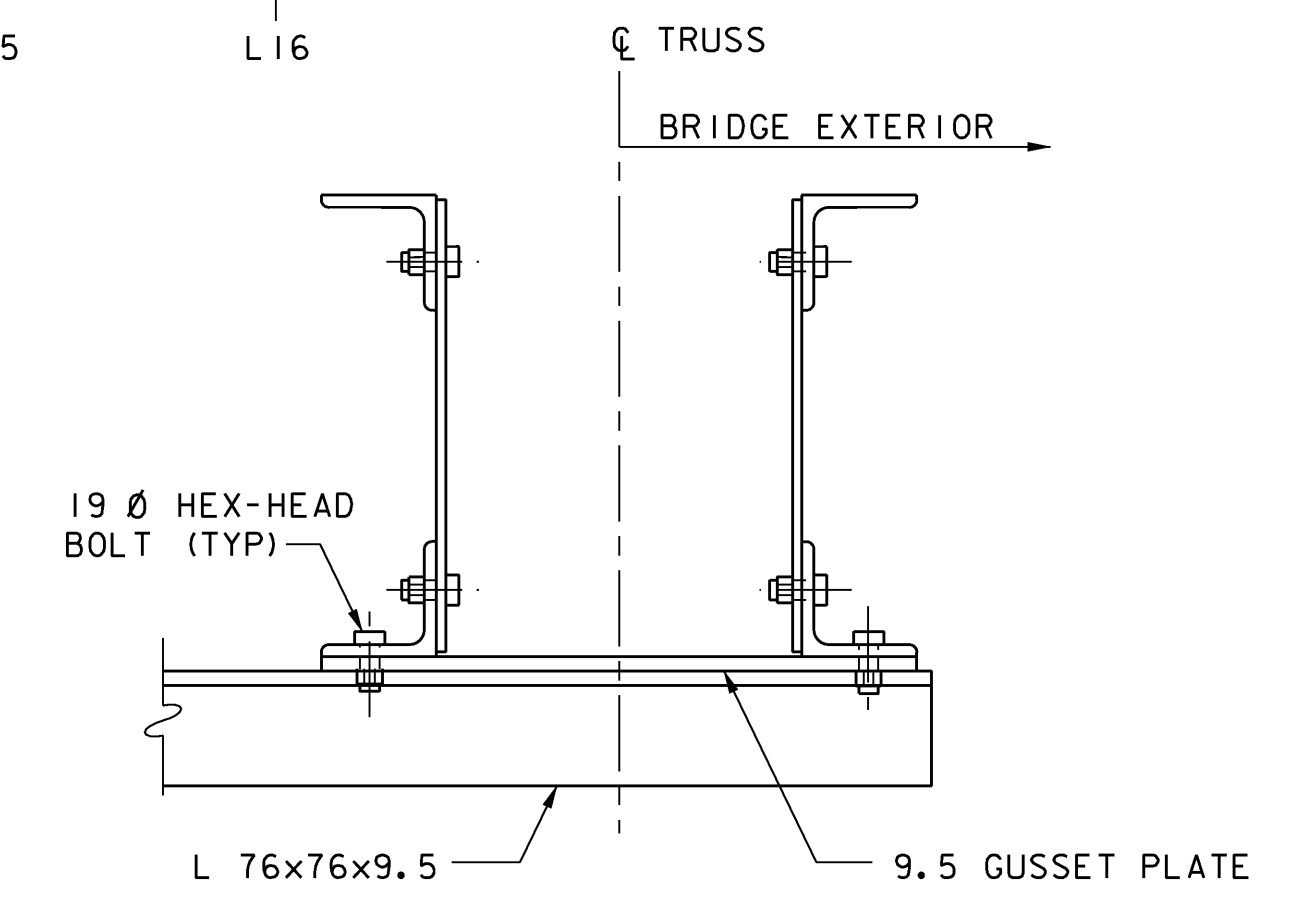
**TYPICAL END BAY DIAGONAL LATERAL BRACING PLAN**  
SCALE: 1:10



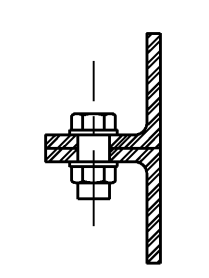
**TYPICAL TRANSVERSE LATERAL BRACING PLAN**  
SCALE: 1:10



**TYPICAL INTERIOR BAY DIAGONAL LATERAL BRACING PLAN**  
SCALE: 1:10



**SECTION B-B**  
SCALE: 1:5



**SECTION A-A**  
SCALE: 1:5



- NOTES:**
1. THE BOTTOM LATERAL BRACING LAYOUT IS SYMMETRICAL ABOUT TRUSS PANEL POINT L8.
  2. ALL LATERAL BRACING ANGLES SHALL BE L 76x76x9.5. ALL GUSSET PLATES SHALL BE 9.5 mm THICK.
  3. ALL LATERAL BRACING CONNECTIONS SHALL BE MADE WITH 19 DIAMETER AASHTO M164 TYPE 1 HEX-HEAD BOLTS.
  4. SEE SHEET 24 FOR DETAILS A, B, C, & D.

**STATE OF VERMONT  
AGENCY OF TRANSPORTATION**

Town Of	DUMMERSTON	Bridge No.	37
Highway No.	TH 62	Log Sta.	
		Surv. Sta.	
TH 62 OVER WEST RIVER			
<b>BOTTOM LATERAL BRACING DETAILS</b>			
Designed By	T. S. BRYANT	Drawn By	B. J. MASSE
Checked By	Date	Bridge Design Supervisor	
T. S. BRYANT	4/09	S. M. HODGDON	Date 4/09
PROJECT	DUMMERSTON	PROJECT NO.	BHO 1442 (28)
I.G.C. Info.			
Bridge Sheet No.	ZJ080DT4	Sheet	23 of 49