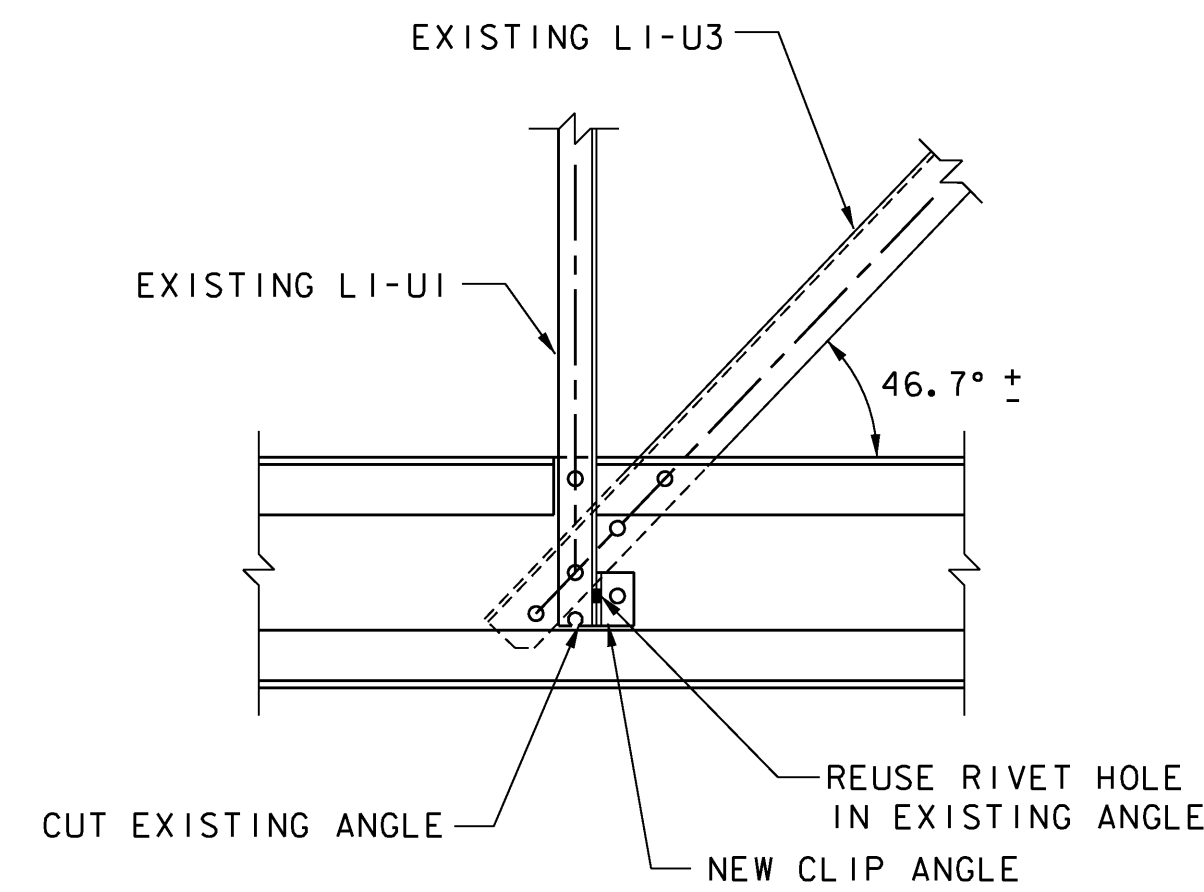
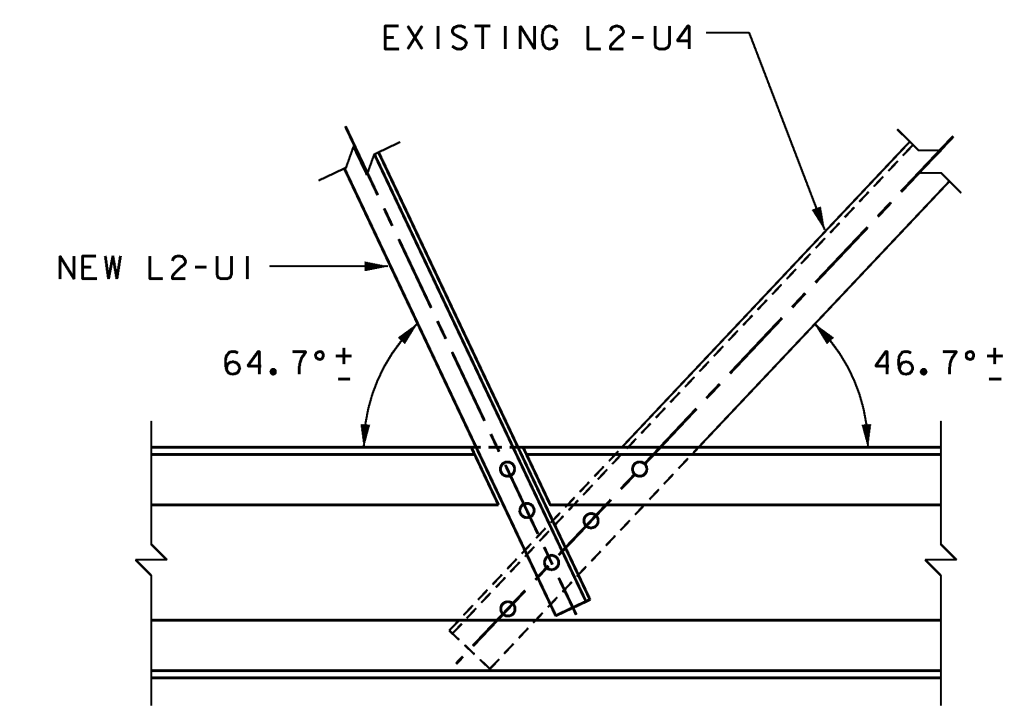


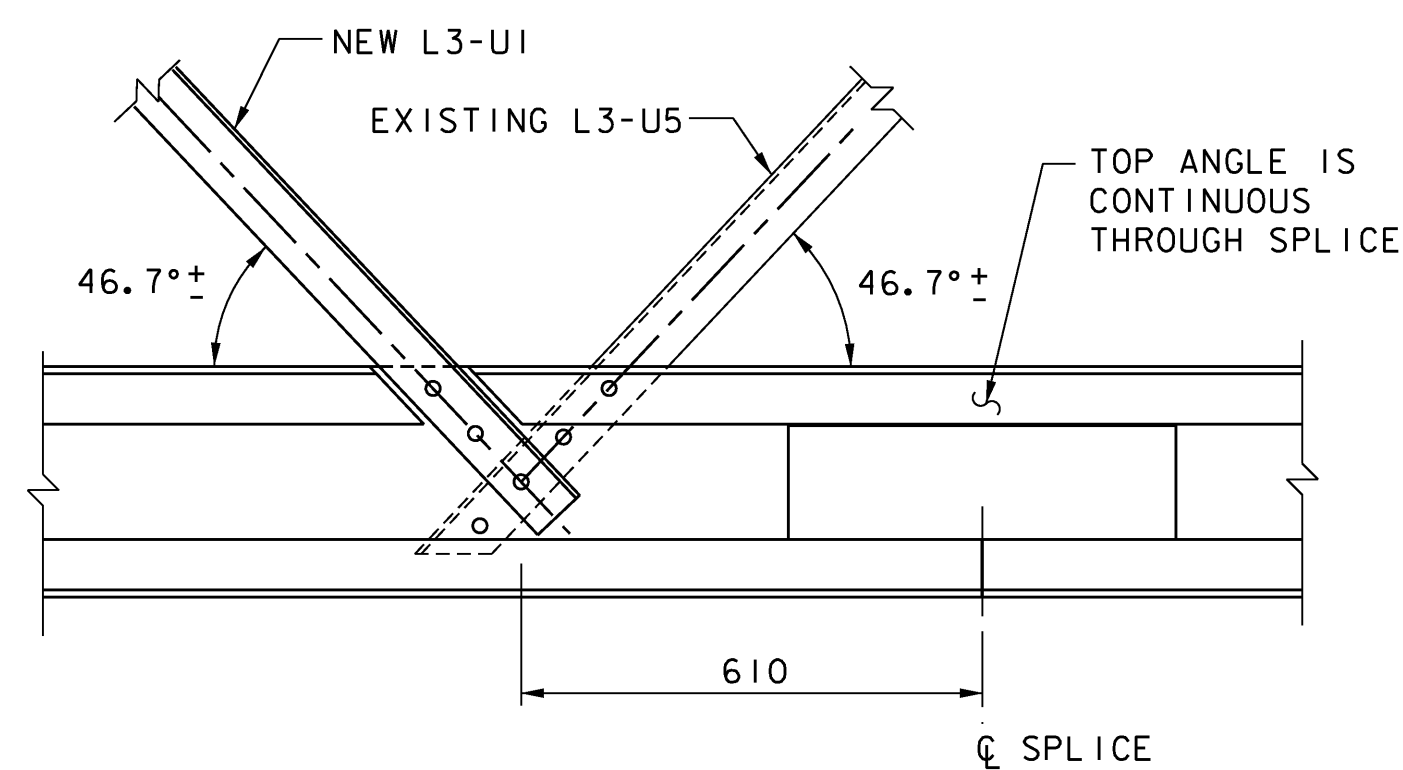
(END POST NOT SHOWN FOR CLARITY)
PANEL POINT L0



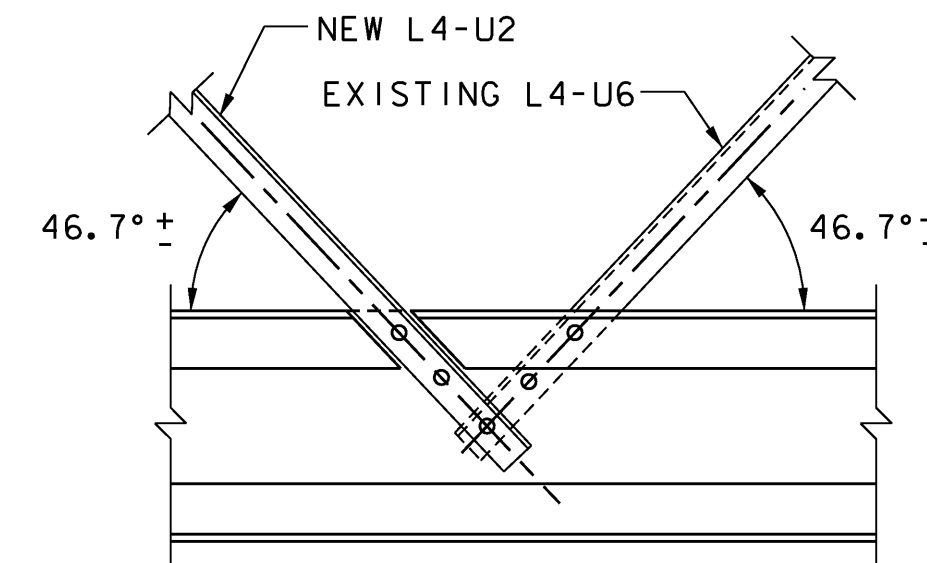
PANEL POINT L1



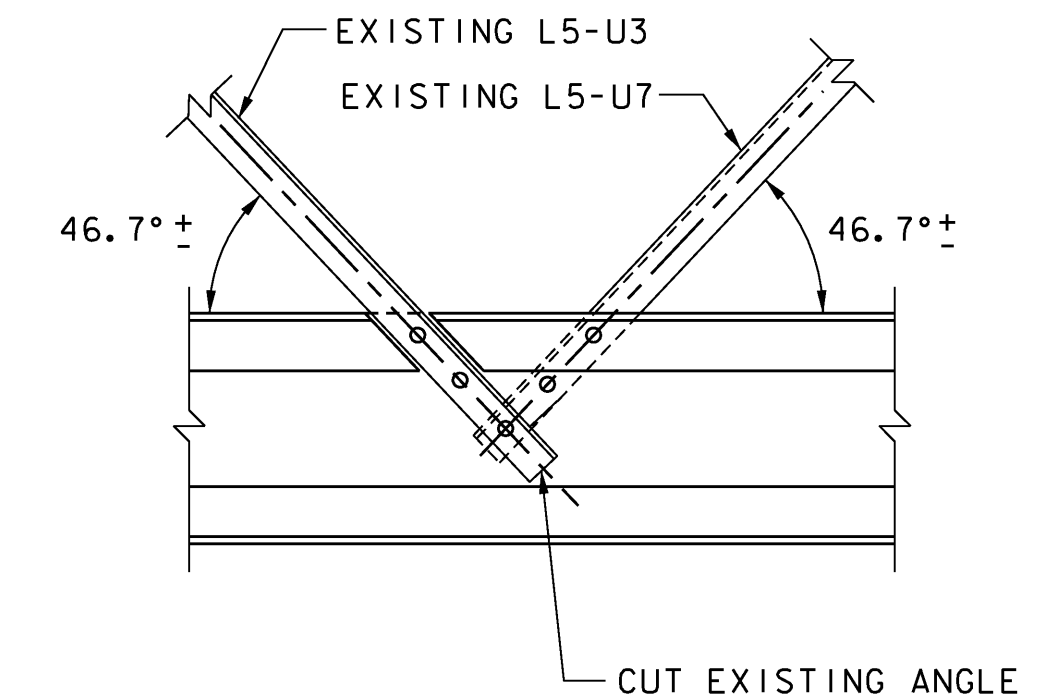
PANEL POINT L2



PANEL POINT L3



PANEL POINT L4

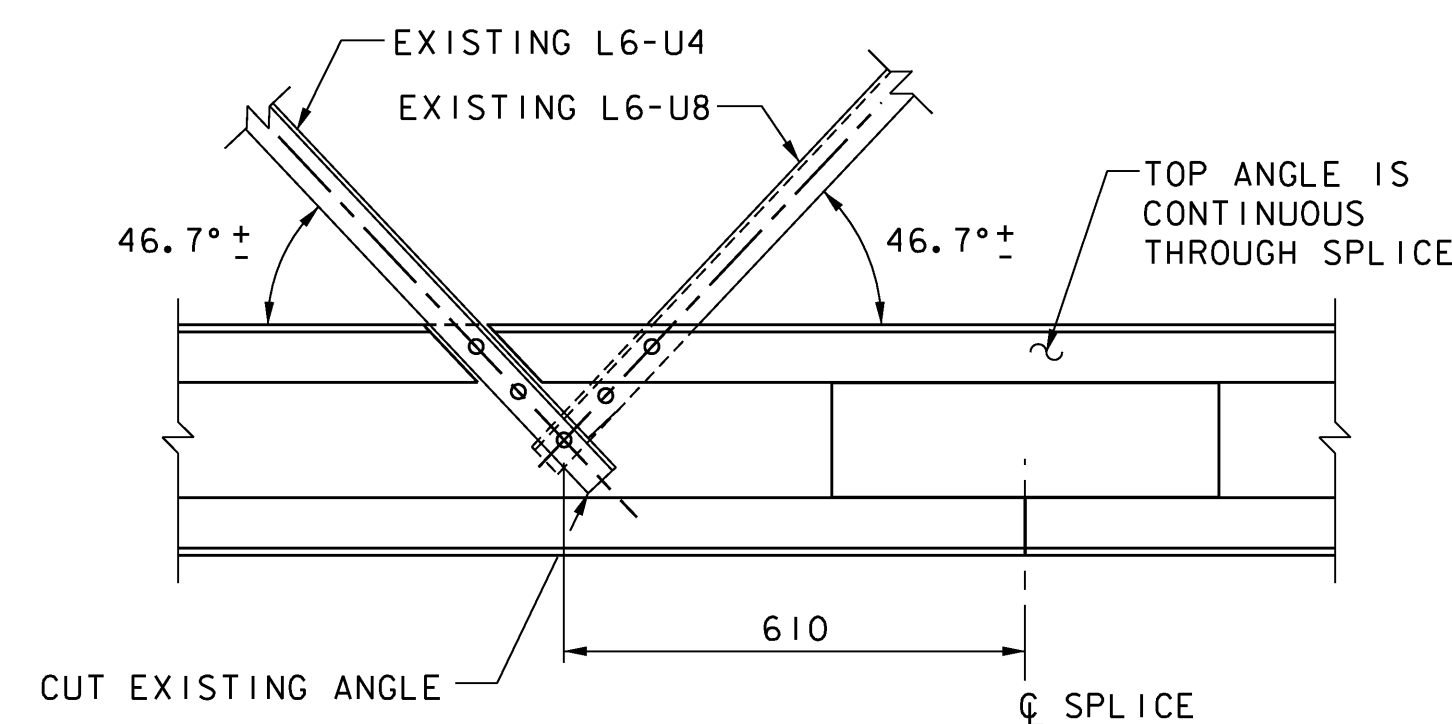


PANEL POINT L5

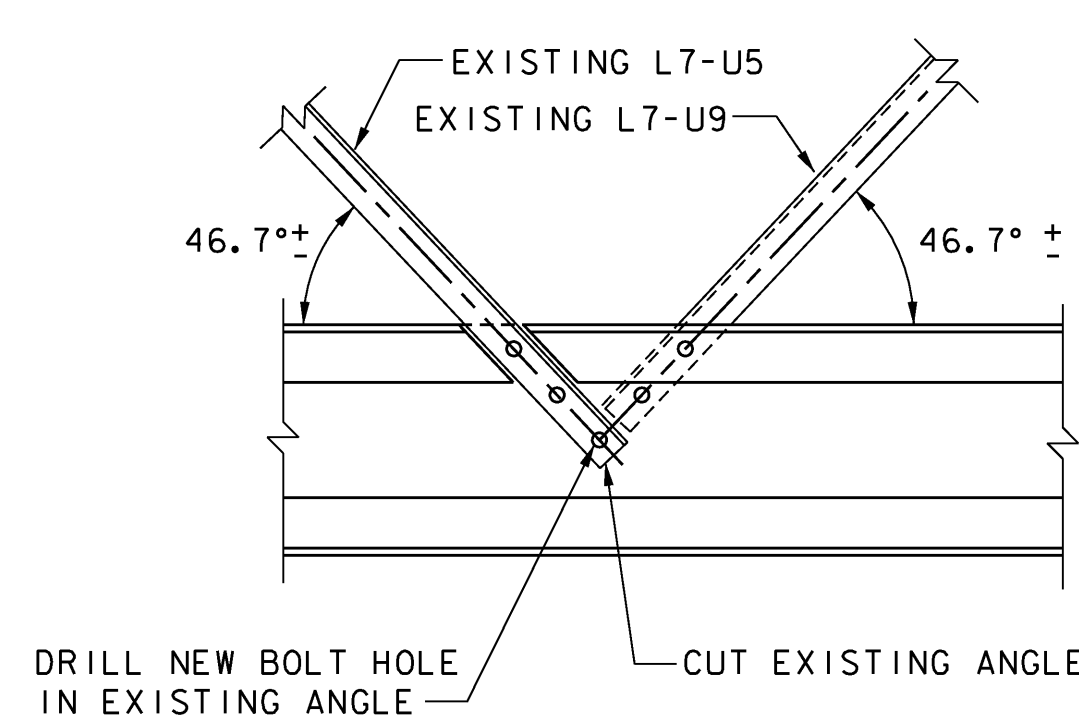
DIMENSIONS PROVIDED IN THESE PLANS SHALL NOT BE USED FOR FABRICATION PURPOSES. ALL NECESSARY DIMENSIONS AND CONFIGURATIONS SHALL BE DETERMINED FROM ACTUAL FIELD MEASUREMENTS.

NOTES:

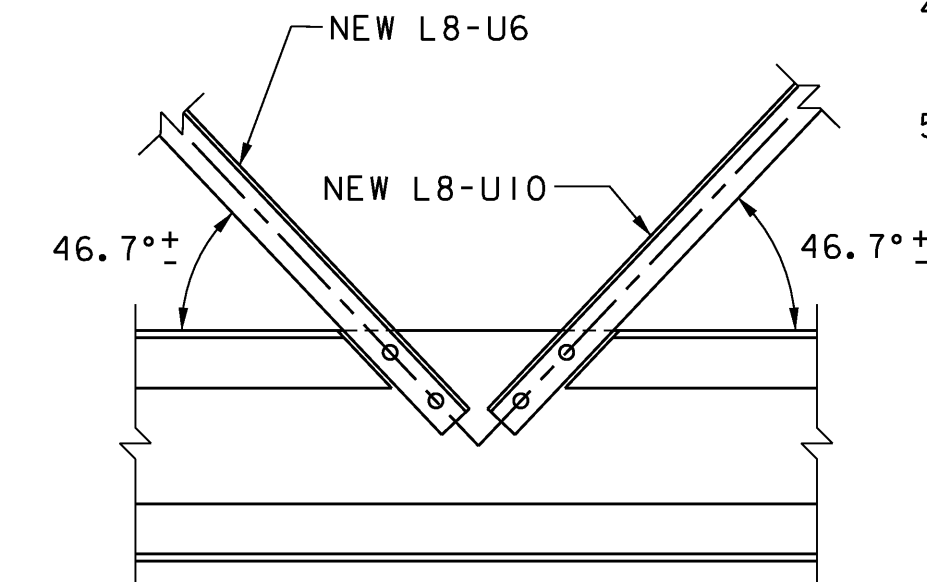
1. TRUSS IS SYMMETRICAL ABOUT PANEL POINT L8. PANEL POINT L9 TO L16 OPPOSITE HAND.
2. BOTTOM CHORD CONNECTIONS TO TRUSS DIAGONALS SHALL BE MADE WITH 19Ø HEX-HEAD BOLTS.
3. EXISTING RIVET HOLES IN TRUSS DIAGONAL MEMBERS THAT ARE TO REMAIN SHALL BE USED IN CONNECTIONS TO NEW BOTTOM CHORD.
4. BOLT HOLES IN BOTTOM CHORD NOT SHOWN EXCEPT WHERE TRUSS DIAGONALS CONNECT.
5. CLIP ANGLES SHALL BE THE SAME SIZE AS THE ANGLES THEY CONNECT.



PANEL POINT L6



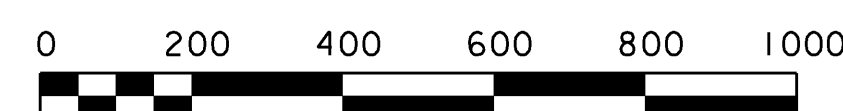
PANEL POINT L7



PANEL POINT L8

TRUSS BOTTOM CHORD CONNECTIONS

SCALE: 1:10



VANASSE HANGEN BRUSTLIN, INC.

**STATE OF VERMONT
AGENCY OF TRANSPORTATION**

Town Of	DUMMERSTON	Bridge No.	37
Highway No.	TH 62	Log Sta.	
		Surv. Sta.	

TH 62 OVER WEST RIVER

TRUSS BOTTOM CHORD DETAILS

Designed By	A. J. CRAWFORD	Drawn By	B. J. MASSE
Checked By	Date	Bridge Design Supervisor	
T. S. BRYANT	4/09	S. M. HODGDON	Date 4/09

PROJECT	DUMMERSTON	PROJECT NO.	BHO 1442 (28)
---------	------------	-------------	---------------

I.G.C. Info.			
Bridge Sheet No.	ZJ080DT2	Sheet	18 of 49