

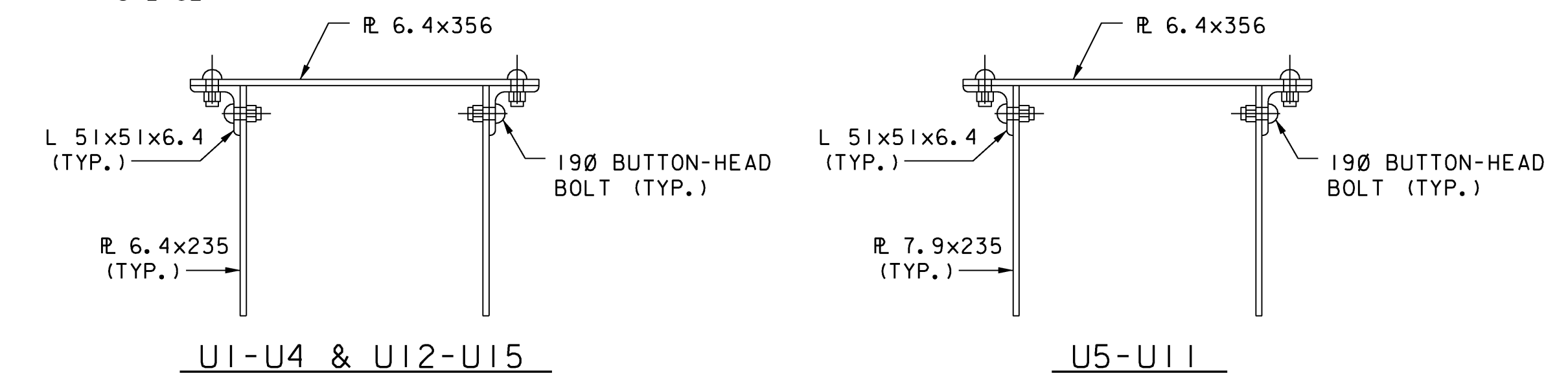
- NOTES:**
- DOWNSTREAM TRUSS ELEVATION (LOOKING UPSTREAM) SHOWN. ALL REHABILITATION ITEMS APPLY TO BOTH TRUSSES UNLESS OTHERWISE NOTED.
 - TRUSS IS SYMMETRICAL ABOUT PANEL POINT L8.
 - IN TRUSS REHABILITATION KEY:
 - (X) = REHABILITATION ITEMS
 - BOLD LINES INDICATE TRUSS MEMBER REPLACEMENTS

DIMENSIONS PROVIDED IN THESE PLANS SHALL NOT BE USED FOR FABRICATION PURPOSES. ALL NECESSARY DIMENSIONS AND CONFIGURATIONS SHALL BE DETERMINED FROM ACTUAL FIELD MEASUREMENTS.

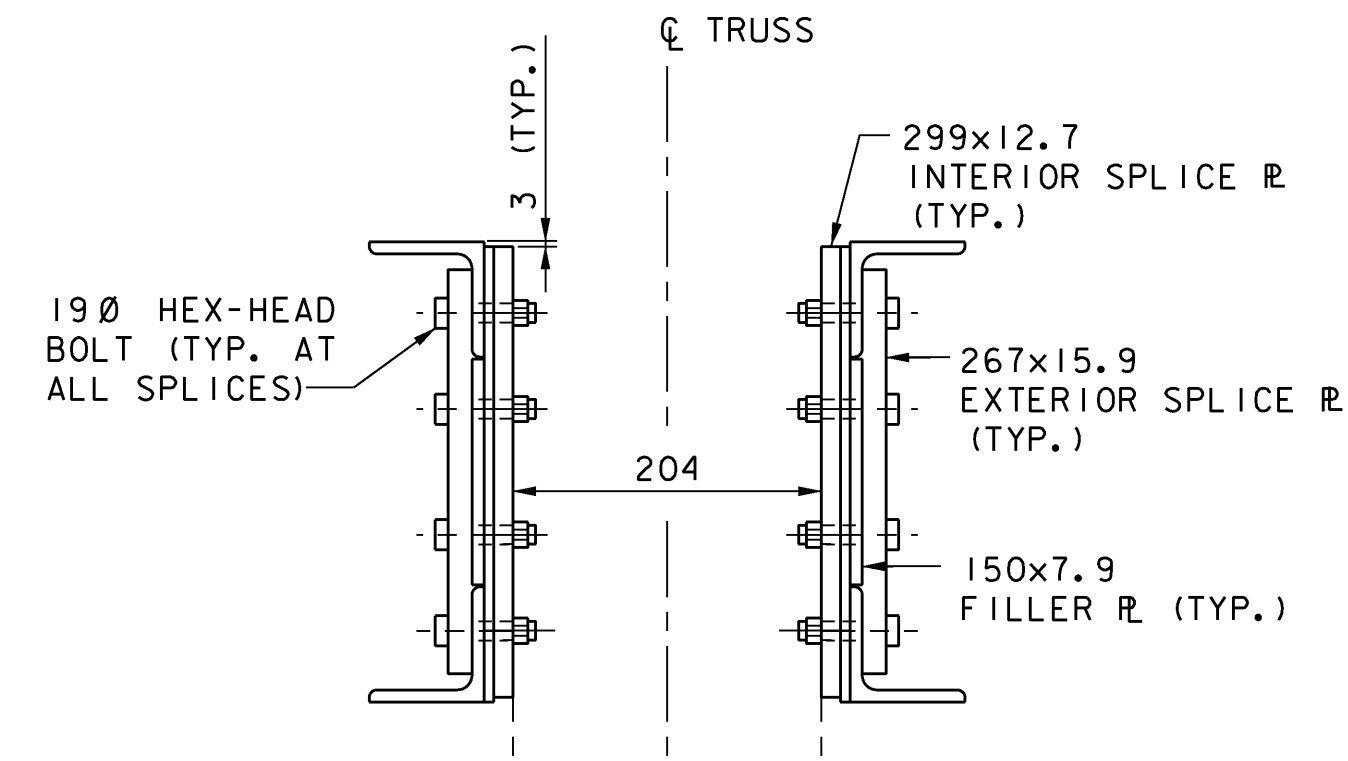
- REPLACE EXISTING MEMBER CONSISTING OF 2-L 89x64x6.4 AND 51x6.4 SINGLE LACING WITH NEW MEMBER CONSISTING OF 2-L 89x76x9.5 AND 64x6.4 SINGLE LACING.
- REPLACE EXISTING MEMBER CONSISTING OF 2-L 51x51x6.4 AND 352x121x6.4 STAY PLATES, WITH NEW MEMBER CONSISTING OF 2-L 76x76x6.4 AND 394x216x6.4 STAY PLATES.
- REPLACE EXISTING MEMBERS CONSISTING OF 2-L 51x51x6.4 AND 352x121x6.4 STAY PLATES, WITH NEW MEMBERS CONSISTING OF 2-L 76x76x6.4 AND 64x6.4 SINGLE LACING.
- REPLACE ALL TRUSS END POSTS.
- REPLACE ENTIRE BOTTOM CHORD.
- REPLACE EXISTING MEMBER CONSISTING OF 2-L 51x51x6.4 AND 352x121x6.4 STAY PLATES IN-KIND.

- REPLACE ALL RIVETS WITH HEX-HEAD H.S. BOLTS IN L1-U3 AND L15-U13 TO TOP CHORD CONNECTIONS.
- REPLACE EXISTING 159x356x6.4 TOP PLATE OF TOP CHORD SPLICE PLATE AT U13 IN-KIND, DOWNSTREAM TRUSS ONLY.
- REPLACE ALL FLOORBEAMS WITH NEW W 250x67 FLOORBEAMS.
- REPLACE EXISTING 64 STEEL GRID DECK WITH NEW 89 STEEL GRID DECK.
- REPLACE ALL BOTTOM LATERAL BRACING.
- INSTALL NEW EXPANSION BEARINGS.
- INSTALL NEW FIXED BEARINGS.

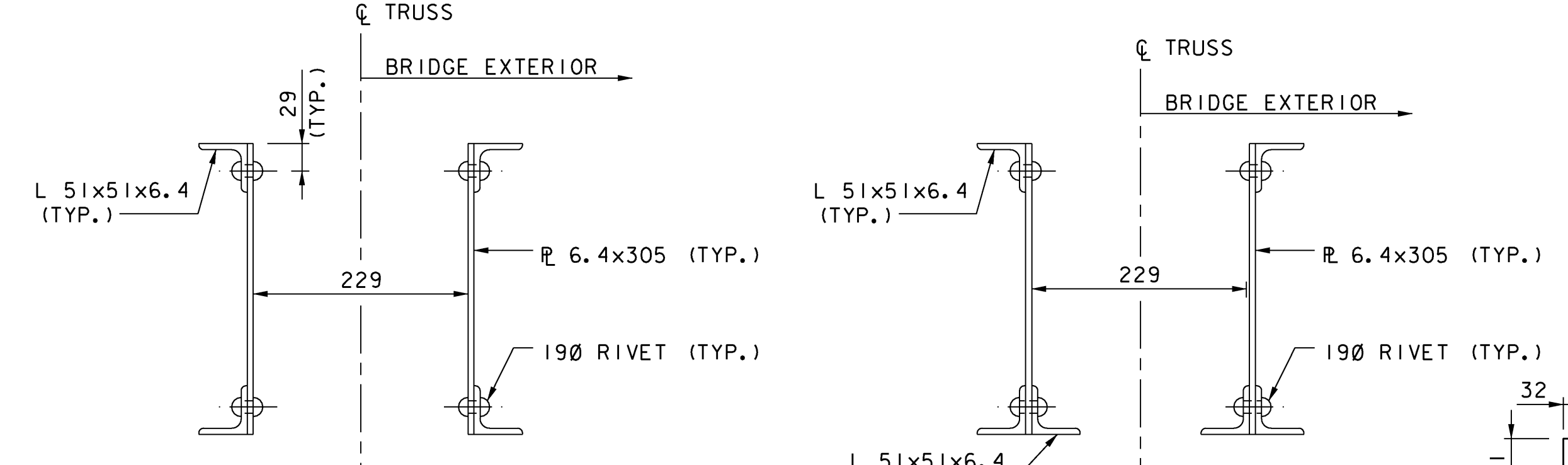
TRUSS REHABILITATION KEY
(SEE NOTE 1)
NOT TO SCALE



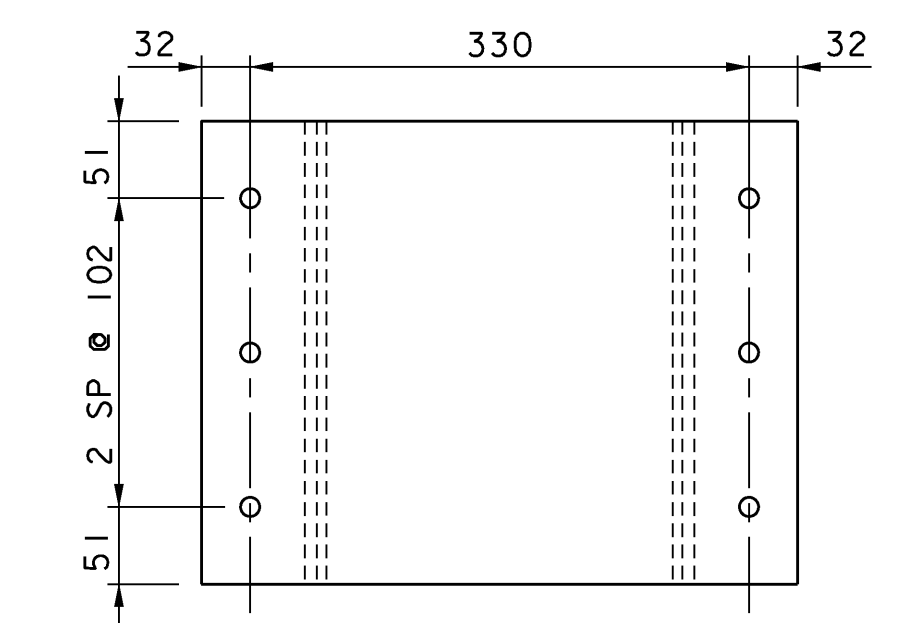
EXISTING TOP CHORD SECTION
SCALE: 1:5



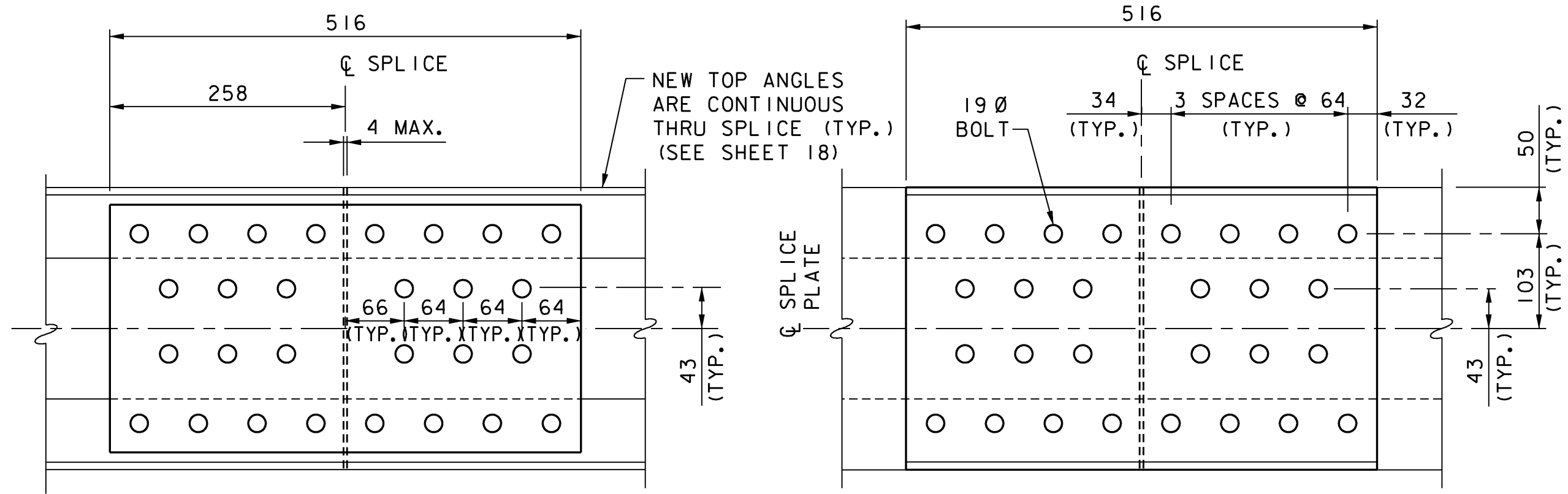
NEW TYPICAL SECTION AT SPLICE
SCALE: 1:5



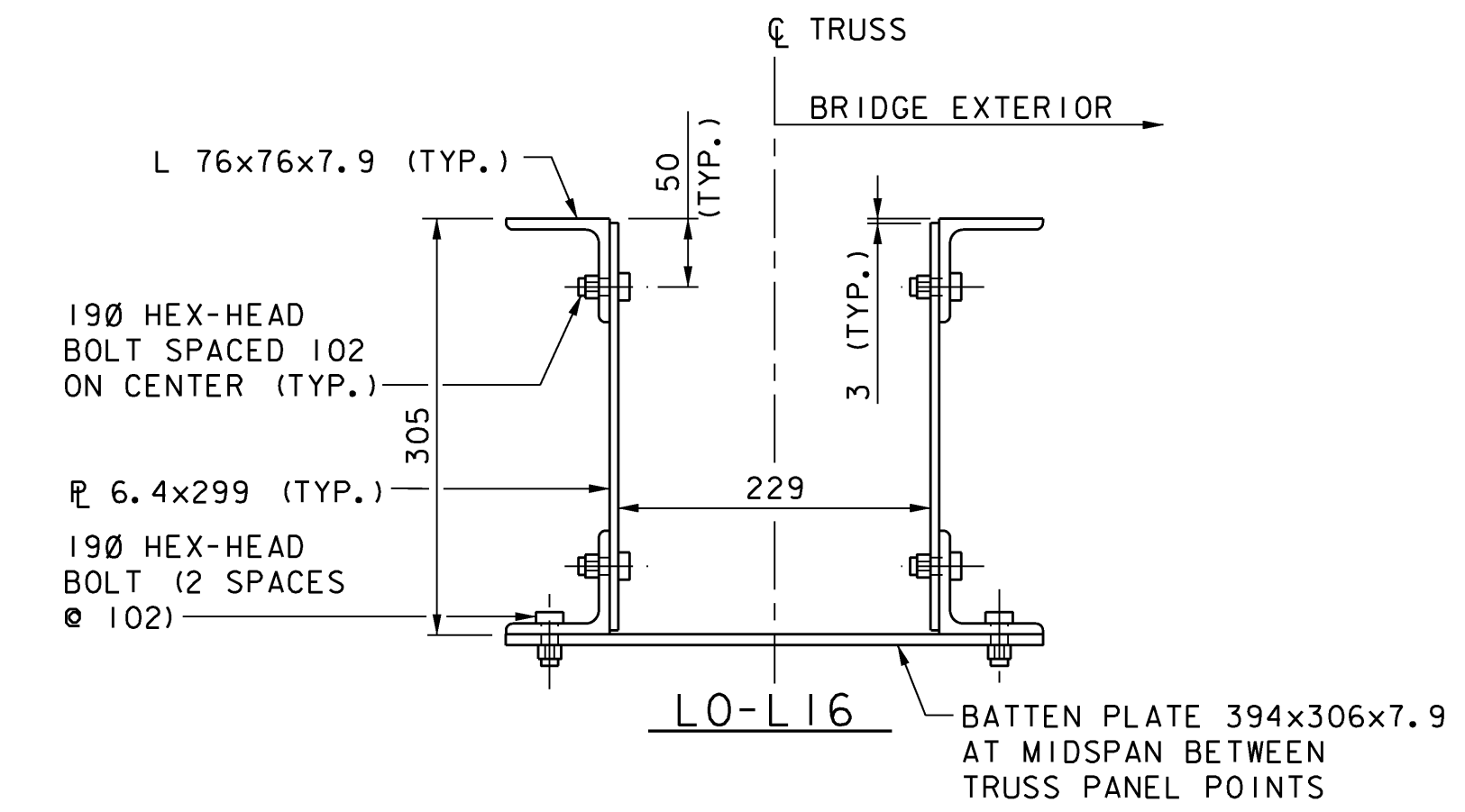
EXISTING BOTTOM CHORD SECTIONS
SCALE: 1:5



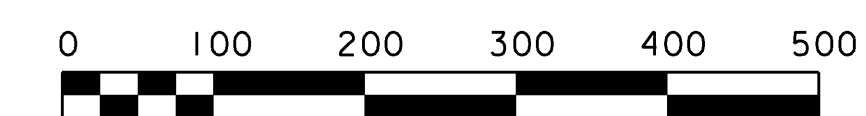
NEW BATTEN PLATE ON BOTTOM CHORD
SCALE: 1:5



NEW BOTTOM CHORD SPLICE DETAILS
SCALE: 1:5



NEW BOTTOM CHORD SECTION
SCALE: 1:5



VANASSE HANGEN BRUSTLIN, INC.

STATE OF VERMONT AGENCY OF TRANSPORTATION

Town Of	DUMMERSTON	Bridge No.	37
Highway No.	TH 62	Log Sta.	
		Surv. Sta.	
TH 62 OVER WEST RIVER			

TRUSS REHABILITATION KEY & DETAILS

Designed By	T. S. BRYANT	Drawn By	C. L. CILLEY
Checked By	Date	Bridge Design Supervisor	
S. M. HODGDON	4/09	S. M. HODGDON	Date 4/09

PROJECT	DUMMERSTON	PROJECT NO.	BHO 1442 (28)
---------	------------	-------------	---------------

I.G.C. Info.	Bridge Sheet No. ZJ080551	Sheet	17 of 49
--------------	---------------------------	-------	----------