

NOTE:

CONSTRUCTION OF TEMPORARY DETOUR AT STATIONS 1+050 LT - 1+065 LT SHALL NOT INCLUDE CUTTING OF STEEP EMBANKMENT NORTHWEST OF PROJECT. CONSTRUCTION OF DETOUR IN THIS AREA SHALL BE ACCOMPLISHED BY FILLING AGAINST THE EMBANKMENT TO ACHIEVE DESIRED GRADE. THE CONTRACTOR SHOULD AVOID DISTURBING EXISTING VEGETATION WHEN REMOVING DETOUR FILL MATERIAL THAT IS AGAINST THE STEEP EMBANKMENT.

NOTES:

SILT FENCE INSTALLATION MAY REQUIRE PHASING TO MAXIMIZE EFFECTIVENESS (SUCH AS AROUND TOE OF TEMPORARY DETOUR FILL SLOPE). INSTALL AND/OR MOVE SILT FENCE AS CONSTRUCTION PROGRESSES TO OBTAIN THE GREATEST PREVENTION OF SEDIMENT TRANSPORT.

SILT FENCE SHOULD BE INSTALLED ALONG THE CONTOURS TO PREVENT CONCENTRATION OF RUNOFF. THE ENDS OF EACH RUN OF SILT FENCE SHOULD BE TURNED UPHILL TO PROVIDE A SMALL POOL FOR SILT SHOULD WATER TRY TO RUN AROUND THE END OF THE SILT FENCE.

TIME GRADING TO MINIMIZE SOIL EXPOSURE BY LIMITING THE DENUDEED AREAS TO THOSE WHICH WILL REQUIRE CONSTRUCTION ACTIVITY IN THE NEAR TERM.

RETAIN EXISTING VEGETATION WHENEVER FEASIBLE

STABILIZE (MULCH) ALL DISTURBED AREAS DAILY TO PREVENT MOBILIZATION OF SEDIMENT
KEEP RUNOFF VELOCITIES LOW

PREPARE TEMPORARY DRAINAGEWAYS WITH PIPING AND OR PLASTIC LINING TO HANDLE CONCENTRATED FLOW UNTIL PERMANENT DRAINAGE IS CONSTRUCTED AND STABILIZED

PREVENT SEDIMENT FROM LEAVING SITE BY MAINTAINING AND MODIFYING PERIMETER CONTROLS AS NEEDED

MONITOR AND MAINTAIN ALL EROSION AND SEDIMENT CONTROL MEASURES DAILY

ALL IN-STREAM CHANNEL WORK TO TAKE PLACE IN A DRY CHANNEL

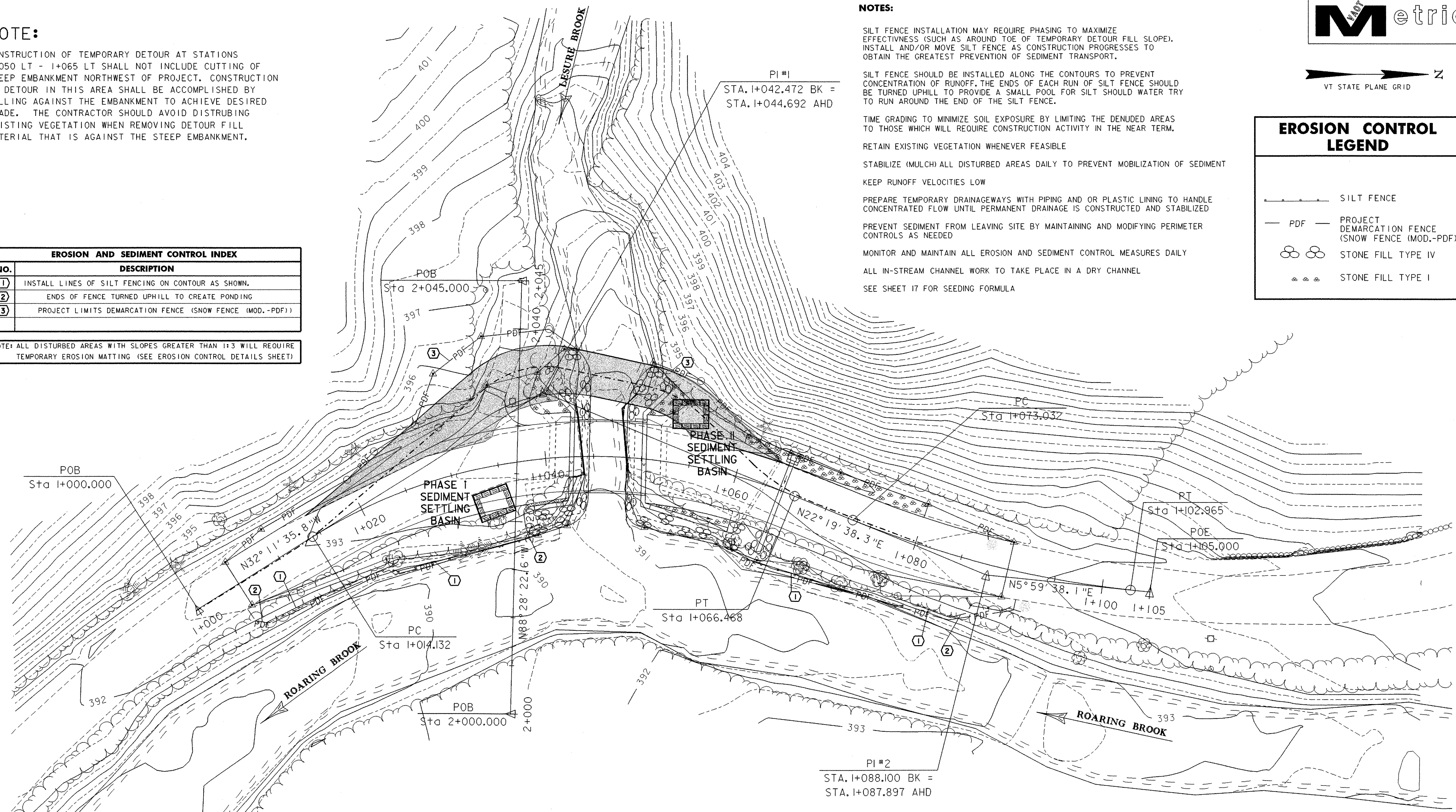
SEE SHEET 17 FOR SEEDING FORMULA

EROSION CONTROL LEGEND

- SILT FENCE
- PROJECT DEMARCATION FENCE (SNOW FENCE (MOD.-PDF))
- STONE FILL TYPE IV
- STONE FILL TYPE I

EROSION AND SEDIMENT CONTROL INDEX	
NO.	DESCRIPTION
①	INSTALL LINES OF SILT FENCING ON CONTOUR AS SHOWN.
②	ENDS OF FENCE TURNED UPHILL TO CREATE PONDING
③	PROJECT LIMITS DEMARCATION FENCE (SNOW FENCE (MOD.-PDF))

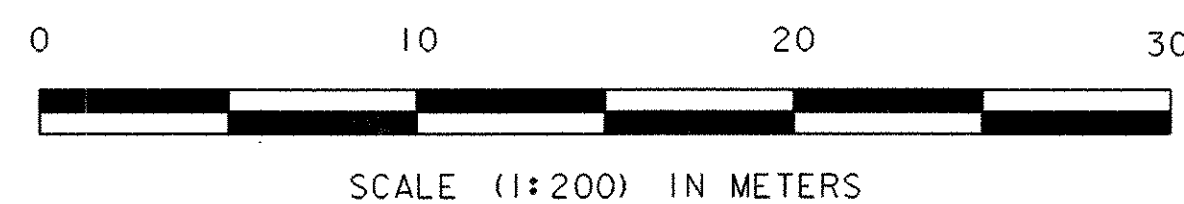
NOTE: ALL DISTURBED AREAS WITH SLOPES GREATER THAN 1:3 WILL REQUIRE TEMPORARY EROSION MATTING (SEE EROSION CONTROL DETAILS SHEET)



EROSION AND SEDIMENT CONTROL SEQUENCE

TASK	TASK
1.) SET UP FIELD OFFICE AND CONTRACTOR STORAGE/WORKSITE LOCATION PROTECTED BY APPROPRIATE CONTROLS	21.) PLACE GEOTEXTILE FABRIC, STONE AND GRUBBING MATERIAL AS SHOWN
2.) INSTALL INITIAL EROSION CONTROL INCLUDING PERIMETER SILT FENCE AS WELL AS PROJECT DELINEATION FENCE	22.) CLEAN OUT & PREPARE SEDIMENT TRAP/ DEWATERING AREA
3.) CLEAR VEGETATION, AND BEGIN CONSTRUCTION OF TEMPORARY DETOUR APPROACHES	23.) REPEAT STEPS 10-16 FOR WINGWALLS NO.1 & 3
4.) STABILIZE TEMPORARY DETOUR SLOPES WITH CLEAN STONE OR EROSION MATTING PLUS SEED AND MULCH	24.) REMOVE SEDIMENT TRAP - PROPERLY DISPOSING OF MATERIAL
5.) RE-ESTABLISH SILT FENCE AT TOE-OF-SLOPES	25.) RESTORE STREAMBANK
6.) BUILD TEMPORARY BRIDGE	26.) PLACE GEOTEXTILE FABRIC, STONE AND GRUBBING MATERIAL AS SHOWN
7.) DIVERT TRAFFIC	
8.) REMOVE EXISTING BRIDGE SUPERSTRUCTURE	
9.) CONSTRUCT SEDIMENTATION TRAP/ DEWATERING AREA	
10.) INSTALL COFFERDAMS	
11.) UTILIZE SEDIMENTATION TRAPS/ DEWATERING AREA/ CLEAN OUT WHEN 1/2 FULL OF SEDIMENT, REPAIR AS NEEDED	27.) COMPLETE APPURTENANCES (GUARDRAIL, ETC.)/ ACCESS DRIVE, ROADWAY WORK
12.) COMPLETE EXCAVATION/STRUCTURE REMOVAL	28.) GRADE, SEED AND MULCH ALL REMAINING DISTURBED AREAS
13.) FORM / PLACE FOOTINGS	29.) RETAIN INITIAL EROSION CONTROL MEASURES UNTIL ESTABLISHMENT OF VEGETATION
14.) FORM / PLACE ABUTMENTS AND WINGWALLS	30.) REMOVE INITIAL EROSION CONTROL MEASURES, BACKFILL, SEED & MULCH DISTURBED AREAS
15.) BACKFILL INCLUDING STONE FILL TO BE UNDER SUPERSTRUCTURE AS COFFERDAM LIMITS PERMIT	
16.) PULL COFFERDAM SHEETING	
16a.) COMPLETE PLACEMENT OF STONEFILL BETWEEN ABUTMENTS	
17.) COMPLETE SUPERSTRUCTURE	
18.) DIVERT TRAFFIC TO NEW BRIDGE/REMOVE DETOUR	
19.) STABILIZE DETOUR AREA/EROSION MATTING SEED & MULCH OR RIPRAP CONSULT RESIDENT ENGINEER	
20.) RESTORE STREAMBANK	

MODIFICATIONS TO THIS CONTROL SEQUENCE MAY BE MADE BY, OR WITH APPROVAL OF, THE RESIDENT ENGINEER



SHEET NAME: EROSION & SEDIMENT CONTROL PLAN

PROJECT NAME: STAMFORD
PROJECT NUMBER: TH3 9411
HIGHWAY NO.: TH 12
BRIDGE NO.: 14
OVER: LESURE BROOK

FILE NAME: /str1/94j072/sj072ec.dgn
PROJECT MANAGER: G.S. ROGERS
DESIGNED BY: K. UPMAL
BRIDGE SHEET NUMBER:
PLOT DATE: 16-OCT-2003
DRAWN BY: K. UPMAL
IPARM NAME: sj072ec.1
SHEET 16 OF 38