

**NOTES:**

- SEE DRAINAGE AND UTILITY SHEET FOR DRAINAGE DETAILS.
- CONSTRUCTION OF TEMPORARY DETOUR AT STATIONS 1+050 LT - 1+065 LT SHALL NOT INCLUDE CUTTING OF STEEP EMBANKMENT NORTHWEST OF PROJECT. CONSTRUCTION OF DETOUR IN THIS AREA SHALL BE ACCOMPLISHED BY FILLING AGAINST THE EMBANKMENT TO ACHIEVE DESIRED GRADE. SEE GENERAL NOTE #21.

CONSTRUCT WOODS DRIVE  
STATION 1+031.680 LEFT (ASKEW 35°-40'-58" LT)

621.505 MANUFACTURED TERMINAL SECTION  
STATION 1+014.819 - 1+031.211 RIGHT  
STATION 1+059.749 - 1+075.500 RIGHT

621.21 HEAVY DUTY STEEL BEAM GUARD RAIL  
STATION 1+037.103 - 1+042.030 LEFT  
STATION 1+050.970 - 1+054.116 LEFT  
STATION 1+031.211 - 1+041.402 RIGHT  
STATION 1+051.600 - 1+059.749 RIGHT

525.41 BRIDGE RAILING, HEAVY DUTY STEEL BEAM / FASCIA MOUNTED  
STATION 1+042.030 - 1+050.970 LEFT  
STATION 1+041.402 - 1+051.600 RIGHT

621.60 ANCHOR FOR STEEL BEAM RAIL  
STATION 1+038.512 LEFT  
STATION 1+052.702 LEFT

REMOVE 310 CGMP  
STATION 1+063.107 LEFT TO RIGHT

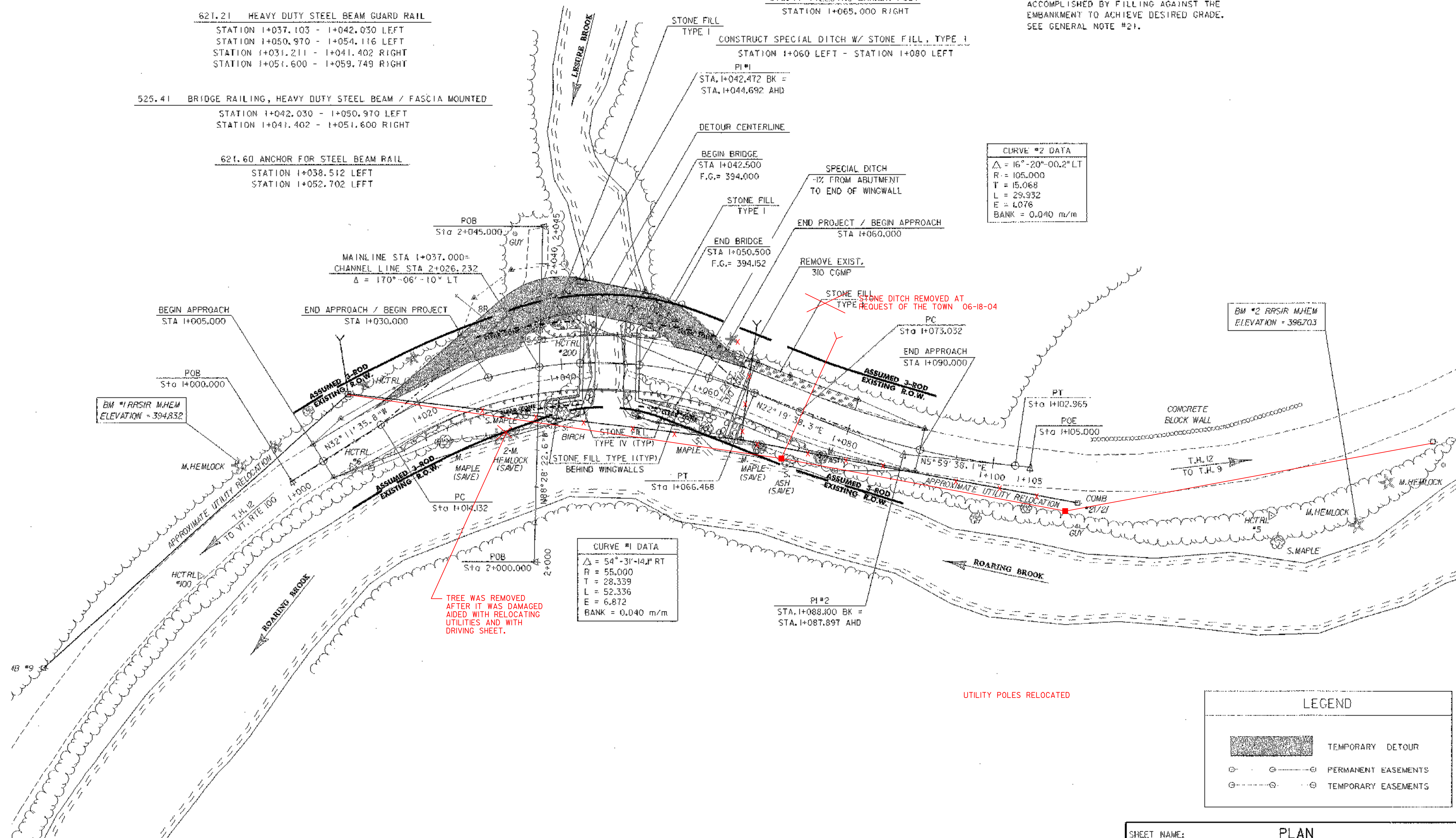
NEW 450 X 10 400 PIPE OPTION  
STATION 1+065.000 LEFT TO RIGHT

619.17 YIELDING MARKER POST  
STATION 1+065.000 RIGHT

CONSTRUCT SPECIAL DITCH W/ STONE FILL, TYPE I  
STATION 1+060 LEFT - STATION 1+080 LEFT

CURVE #2 DATA	
$\Delta$	= 16°-20'-00.2" LT
R	= 105.000
T	= 15.068
L	= 29.932
E	= 4.076
BANK	= 0.040 m/m

CURVE #1 DATA	
$\Delta$	= 54°-31'-14" RT
R	= 55.000
T	= 28.339
L	= 52.336
E	= 6.872
BANK	= 0.040 m/m

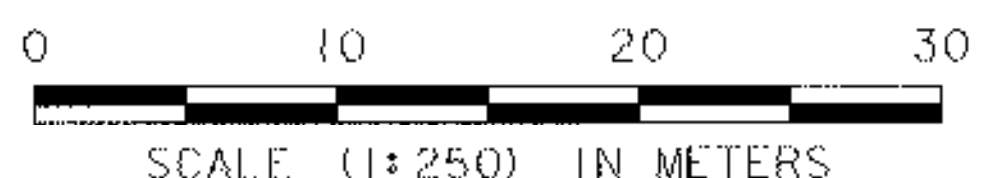


TREE WAS REMOVED AFTER IT WAS DAMAGED AIDED WITH RELOCATING UTILITIES AND WITH DRIVING SHEET.

UTILITY POLES RELOCATED

LEGEND	
	TEMPORARY DETOUR
	PERMANENT EASEMENTS
	TEMPORARY EASEMENTS

EXISTING BRIDGE DATA	
SUPERSTRUCTURE:	CONCRETE DECK ON STEEL BEAMS
SUBSTRUCTURE:	CONCRETE ABUTMENTS
OVERALL LENGTH:	5.79 M
BRIDGE WIDTH:	4.88 M (FASCIA TO FASCIA)
YEAR BUILT:	1934



SHEET NAME: PLAN			
PROJECT NAME:	STAMFORD	HIGHWAY NO.:	TH 12
PROJECT NUMBER:	TH3 9411	BRIDGE NO.:	14
		OVER:	LEASURE BROOK
FILE NAME:	/str/94j072/sj072bdr.dgn	PLOT DATE:	16-OCT-2003
PROJECT MANAGER:	G.S. ROGERS	DRAWN BY:	K.UPMAL
DESIGNED BY:	K.UPMAL	IPARM NAME:	sj072pl1
BRIDGE SHEET NUMBER:		SHEET	8 OF 38