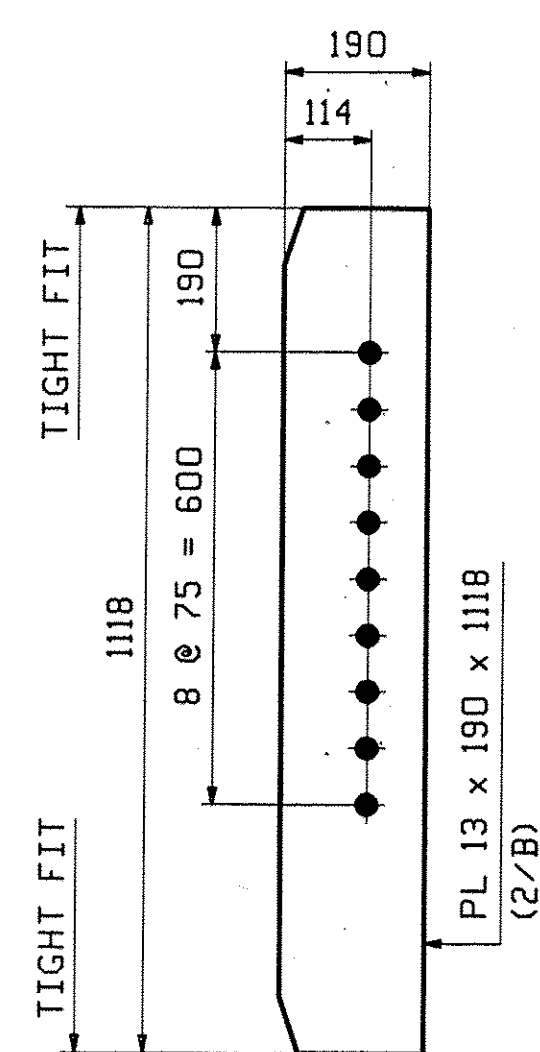
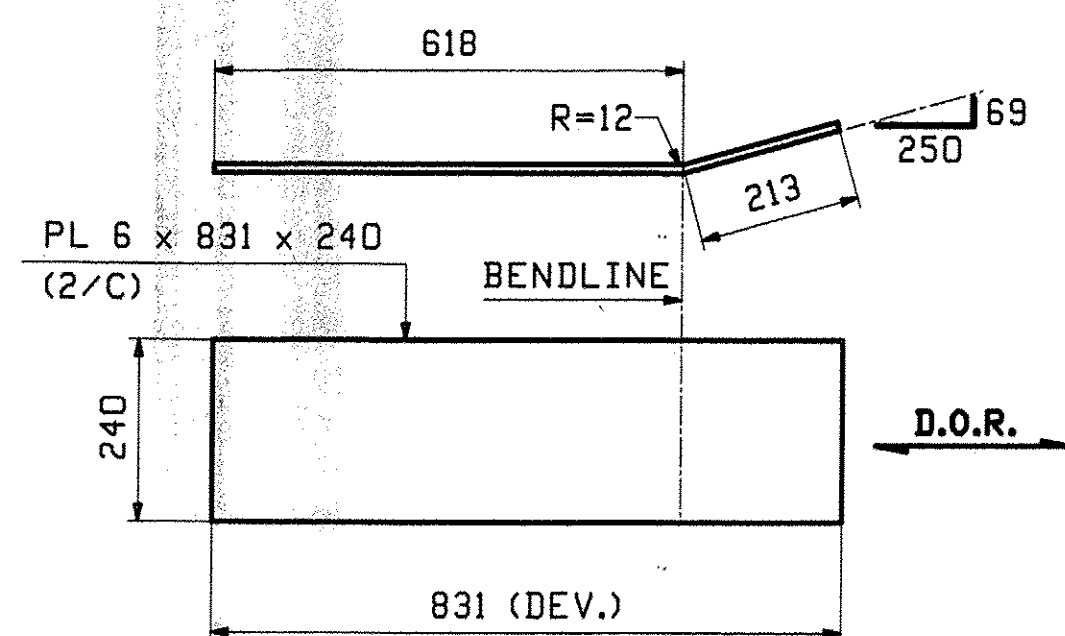


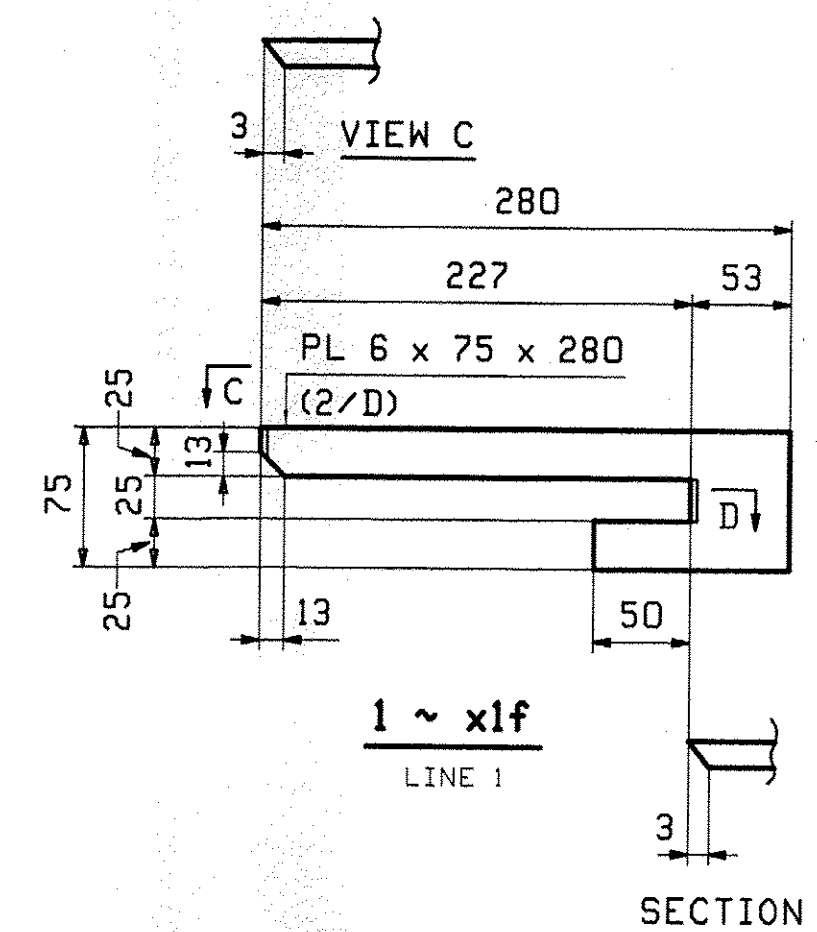
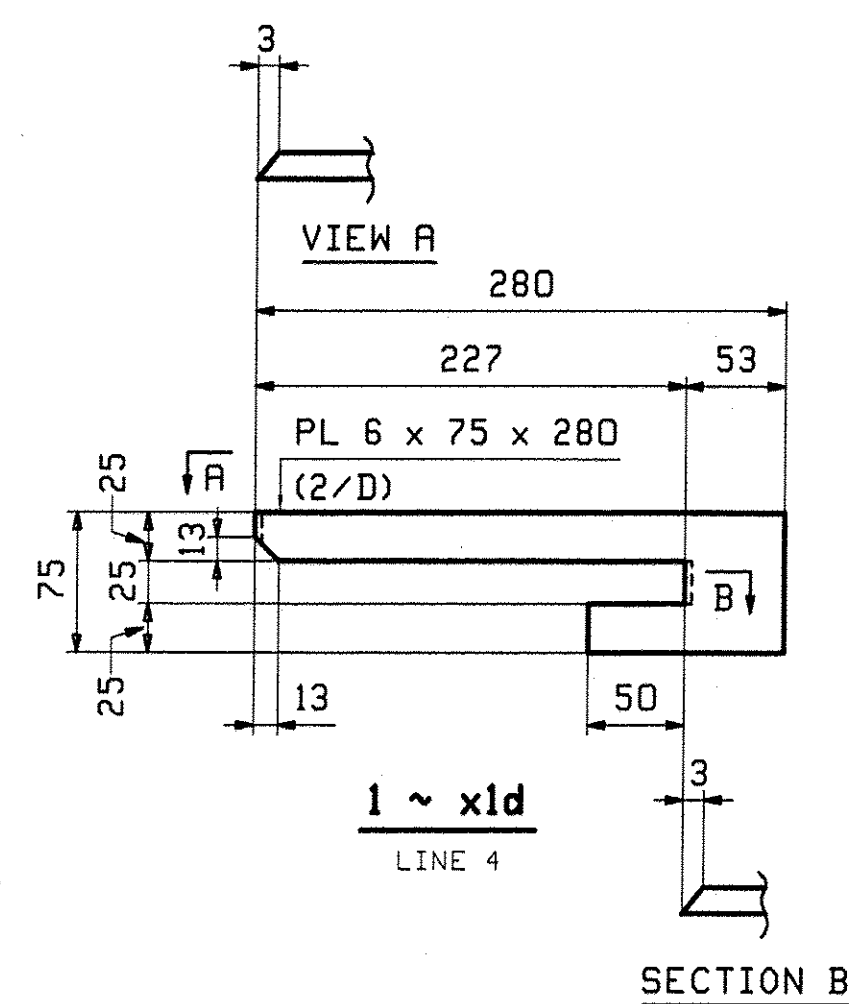
20 ~ x1a  
INT DIAPH CONN  
(LOW END & DROP = 0)



10 ~ x1b  
INT DIAPH CONN  
(HIGH END)



8 ~ x1c  
END PLATE AT BTH OF GIRDER  
TYP EACH END OF GIRDERS



- NOTES:  
1. FOR GENERAL NOTES SEE DRAWING GNI.  
2. **D.O.R.** DENOTES DIRECTION OF MILL ROLLING.

REV.	DATE	REMARKS	DWN	CHK	APVL	SHOP
0						
MATERIAL:		SURFACE PREP. & PAINT:		HOLES:		SHOP BOLTS:
M270-345W		SEE DWG GNI		15/16" Ø		NONE
DESCRIPTION: GIRDER STANDARD DETAILS						
CASCO BAY STEEL STRUCTURES, INC. 75 SPRING HILL ROAD SACO, MAINE 04072 PHONE (207) 282-7360 FAX. (207) 282-1179						
STRUCTURE: BRIDGE NO. 31 ON TOWN HIGHWAY NO. 3 BRIDGE PROJECT READSBORO County of BENNINGTON				DRAWN:	DATE:	
				JTB	03/23	
				CHKD:	DATE:	
				ELC	4/14/10	
LOCATION: TOWN OF READSBORO, VERMONT				JOB NO.	DWG NO.	
PROJ NO. BRO 1441(25)				445	X1	
CUSTOMER: COLD RIVER BRIDGE LLC					REV. 1	

RECEIVED  
CHKD BY: *NS* OKD BY: *DDB*  
JUN 28 2010  
RESUBMIT APPROVED  
BY: *apw* DATE: *7/1/10*