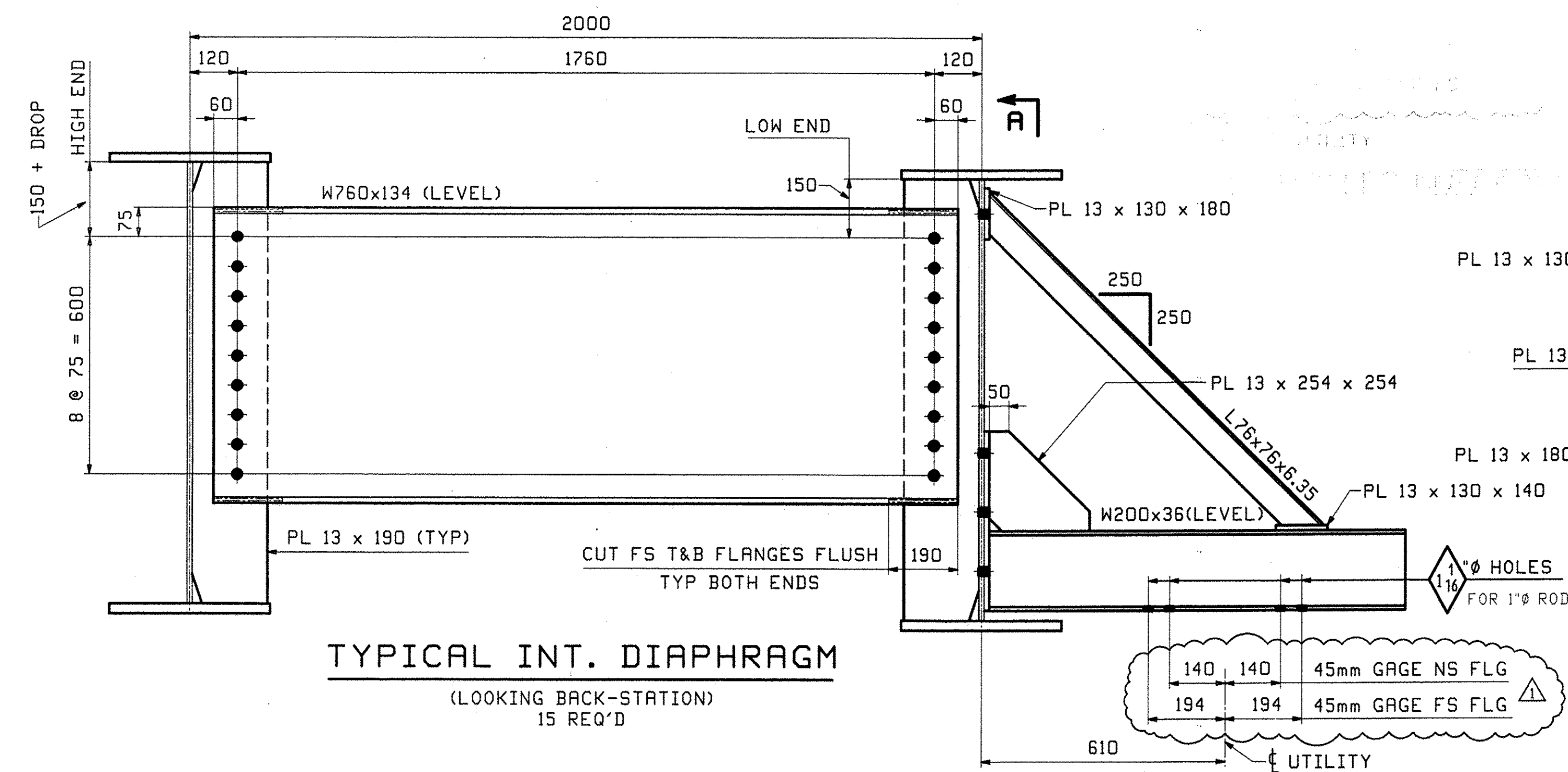
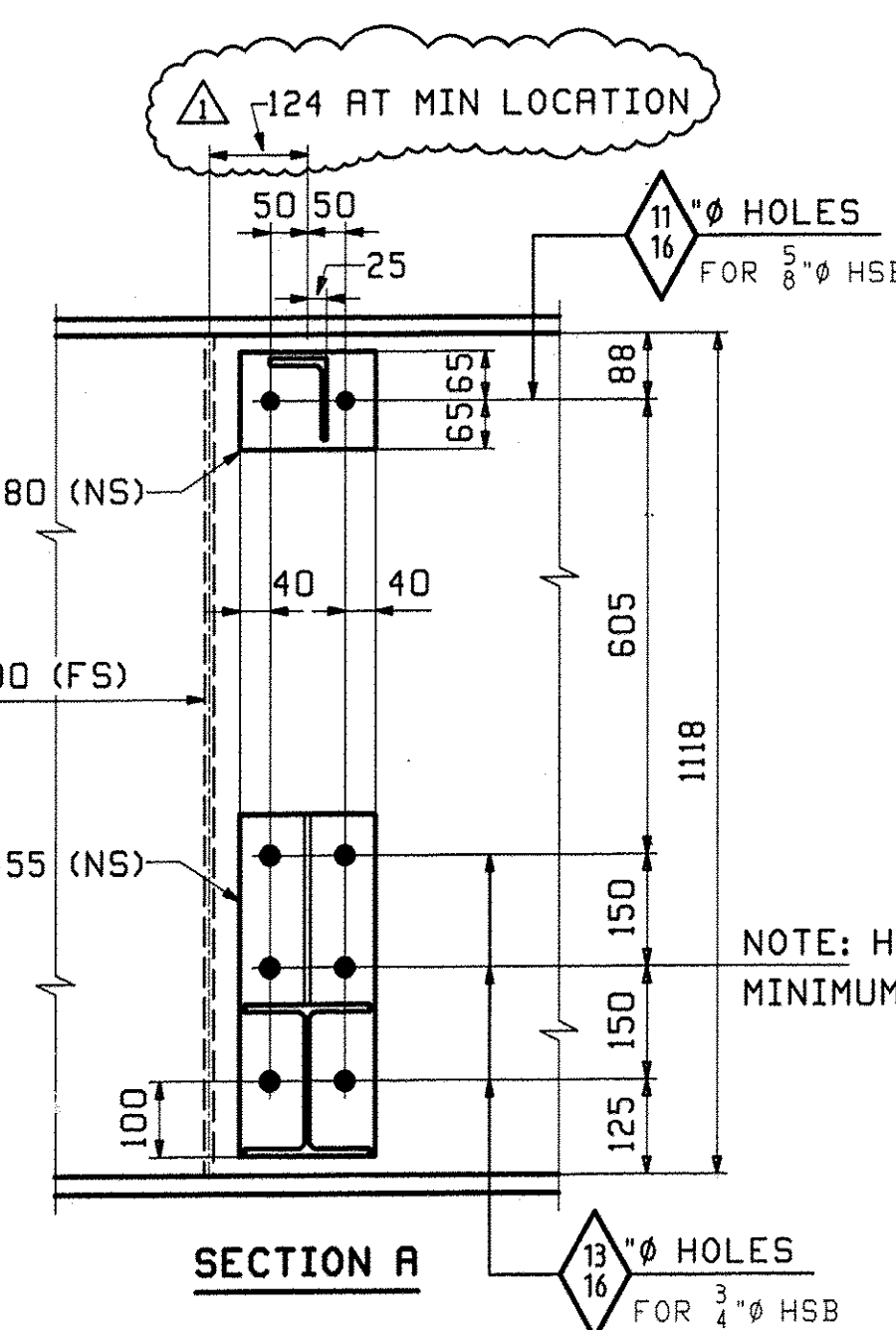


UTILITY SUPPORTS



UTILITY SUPPORTS (RFI-TEC-2980001)
(LOOKING BACK-STATION - LINE 1)
(LOOKING UP-STATION - LINE 4)



- NOTES:
1. MATERIAL SHALL BE ASTM M270 GRADE 345W (UN).
 2. ALL BOLT HOLES SHALL BE 15/16" FOR 3/8" HSB (UN).
 3. MATERIAL FOR UTILITY SUPPORT SHALL BE HOT DIPPED GALVANIZED.

- CALCULATION PLAN NOTES:
1. LONGITUDINAL DIMENSIONS ARE SLOPING ALONG BOTTOM OF WEBS WITH CORRECTIONS MADE FOR DL CAMBER & GRADE (UN).
 2. TRANSVERSE DIMENSIONS ARE IN A HORIZONTAL PLANE (UN).
 3. ARROW POINTS TOWARD LOW END OF MEMBER.
 4. ENDS OF GIRDERS ARE VERTICAL AFTER DL ROTATION.
 5. DIAPHRAGM STIFFENERS ARE NORMAL TO GRADE.
 6. BOTTOM POINT NUMBERS = TOP POINT NUMBERS + 100
 7. COMBINE INT. DIAPHRAGMS FOR DIFF IN DROPS OF +/- 4mm.

**** NOTE ****
THE PURPOSE OF THIS DRAWING IS TO COORDINATE GEOMETRIC CONTROL INFORMATION AND CONNECTION SPACING. THIS DWG IS SUBMITTED FOR INFORMATION ONLY & IS NOT INTENDED FOR SHOP FABRICATION. DETAIL DWGS WILL SHOW ALL WELDING AND DIMENSIONS REQ'D FOR FABRICATION.

6/23	REV. UTILITY SPACING & LAYOUT	JTB	SF	6/24/10		
0				4/16/10		
REV.	DATE	REMARKS	DWN	CHK	APVL	SHOP
MATERIAL:		SURFACE PREP. & PAINT:		HOLES:		SHOP BOLTS:
DESCRIPTION: CALCULATION PLAN						
CASCO BAY STEEL STRUCTURES, INC. 75 SPRING HILL ROAD SACO, MAINE 04072 PHONE (207) 282-7360 FAX. (207) 282-1179						
STRUCTURE: BRIDGE NO. 31 ON TOWN HIGHWAY NO. 3 BRIDGE PROJECT READSBORO County of BENNINGTON			DRAWN: JTB		DATE: 03/22	
LOCATION: TOWN OF READSBORO, VERMONT			CHKD: ELC		DATE: 4/14/10	
PROJ NO. BRO 1441(25)			JOB NO. 445		DWG NO. WS1	
CUSTOMER: COLD RIVER BRIDGE LLC					REV. 1	

RECEIVED
CHKD BY: [Signature] OKD BY: [Signature]
JUN 28 2010
RESUBMIT APPROVED [Signature]
BY: [Signature] DATE: 7/1/10