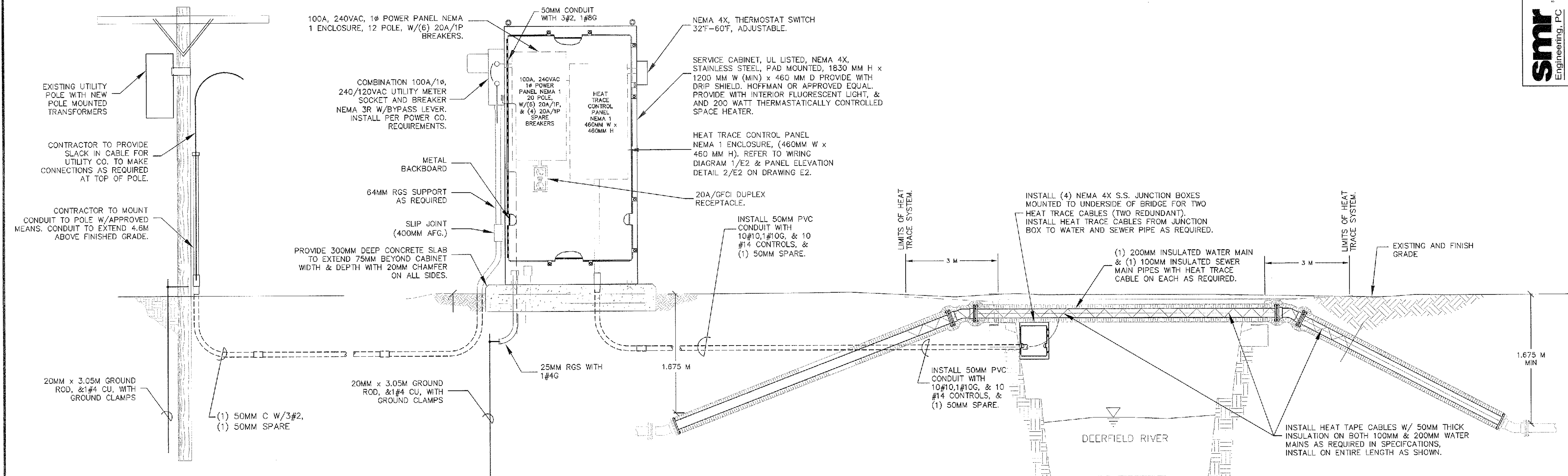
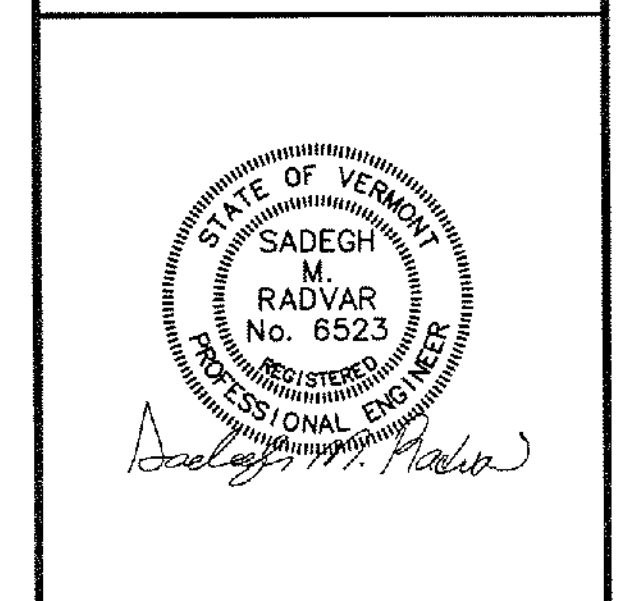


Project #	416006
Project Mgr.	RAW
Design	JWC
Drawn	JWC
Checked by	RED
Date	December 09
Scale	AS SHOWN
Approved by	RED

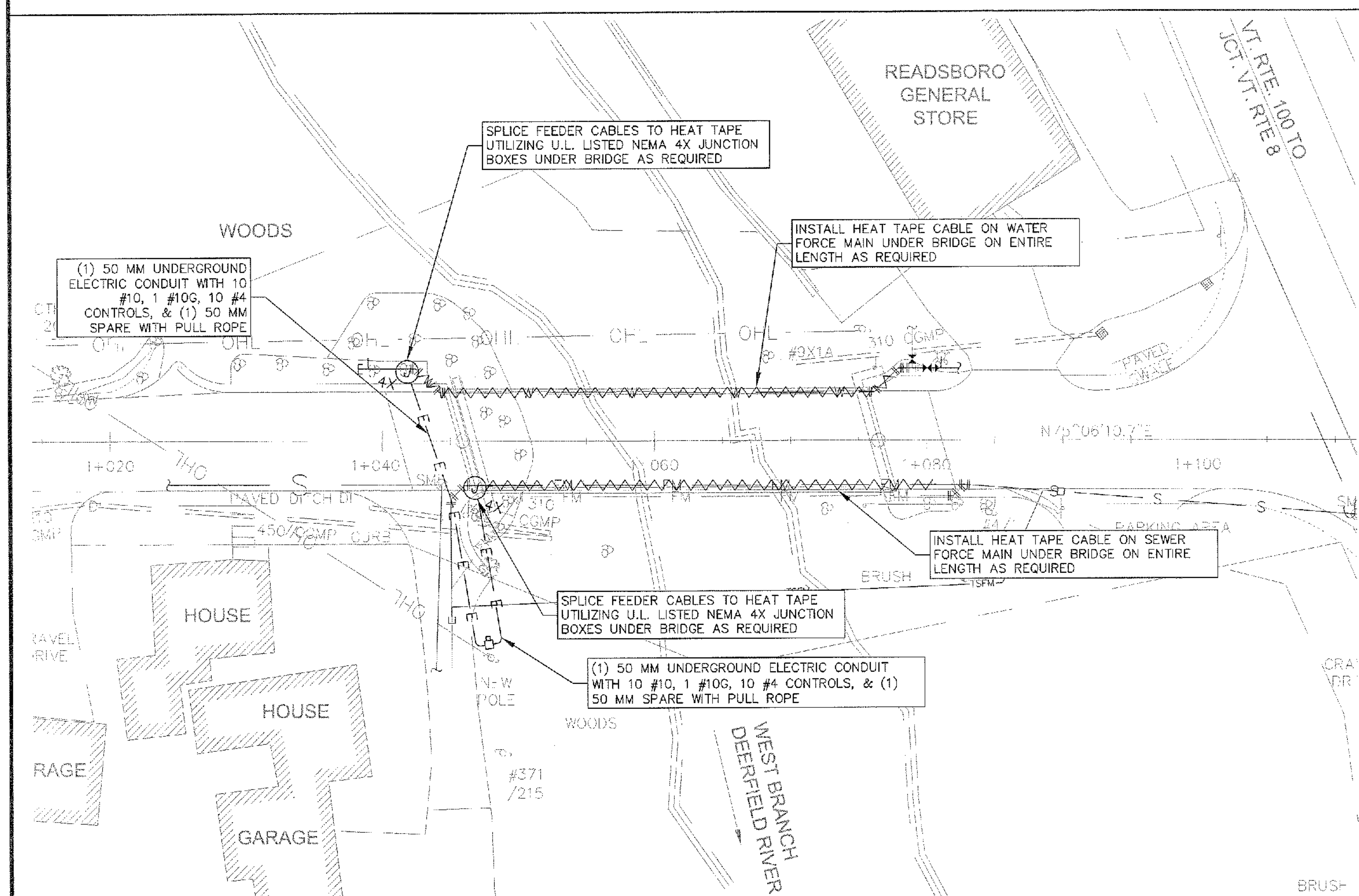
Revisions:

THE DRAWINGS FOR THIS PROJECT SHALL NOT BE REPRODUCED OR ALTERED IN ANY MANNER WITHOUT THE WRITTEN APPROVAL AND AUTHORITY OF DUFRESNE & ASSOCIATES, P.C. ANY REVISIONS SHALL BE MADE BY THE ENGINEER.

**Dufresne & Associates, P.C.**



**ELECTRICAL SERVICE CABINET WITH HEAT TRACE SYSTEM ELEVATION 1**  
 SCALE: NONE

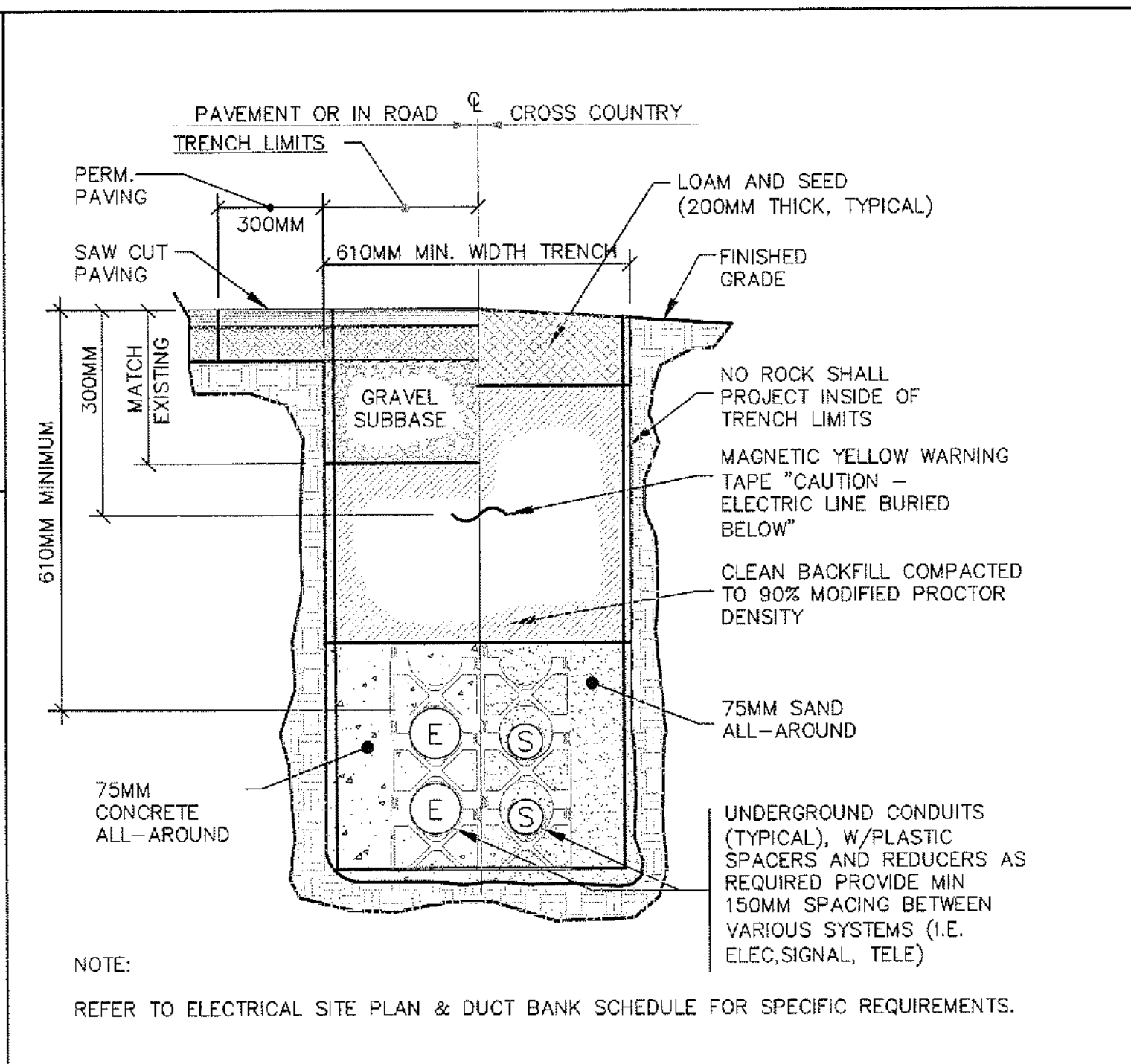


**DEERFIELD RIVER CROSSING ELECTRICAL SITE PLAN 2**  
 SCALE: 1:250

**ELECTRICAL SITE LEGEND**

- (C) UTILITY POLE
- O—P— PROPOSED OVERHEAD PRIMARY CABLE
- EXP--- EXISTING UNDERGROUND PRIMARY CONDUIT
- EX--- EXISTING UNDERGROUND ELECTRICAL CONDUIT
- SX--- EXISTING UNDERGROUND SIGNAL CONDUIT
- E--- PROPOSED NEW UNDERGROUND ELECTRICAL CONDUIT
- S--- PROPOSED NEW UNDERGROUND SIGNAL CONDUIT

- NOTES:**
- PROVIDE RIGID GALVANIZED SWEEPS ON ALL 90° TURNS.
  - UTILIZE RIGID GALVANIZED STEEL CONDUIT & SWEEPS AT THE RISER POLE FOR PRIMARY SECONDARY & TELEPHONE CONDUITS, GROUND AS REQUIRED.
  - COORDINATE NEW UNDERGROUND CONDUIT LOCATION WITH EXISTING UNDERGROUND ELECTRICAL CONDUIT, PROCESS PIPING AND STRUCTURES PRIOR TO EXCAVATION.
  - REPAIR EXISTING PAVED AND GRASSED AREAS TO CONDITION EXISTING PRIOR TO EXCAVATION.
  - ALL UTILITY COMPANIES, PUBLIC AND PRIVATE, MUST BE NOTIFIED, INCLUDING THOSE IN CONTROL OF UTILITIES NOT SHOWN ON THIS PLAN, PRIOR TO DESIGNING, EXCAVATING, BLASTING, INSTALLING, BACKFILLING, GRADING, PAVEMENT RESTORING OR REPAVING.
  - REFER TO DETAIL 4/E1 FOR TYPICAL TRENCHING DETAIL FOR ELECTRICAL/SIGNAL CONDUITS.



**SUBSURFACE WORK NOTE:**

THE LOCATIONS OF EXISTING UNDERGROUND UTILITIES ARE SHOWN IN APPROXIMATE LOCATIONS AND HAVE NOT BEEN INDEPENDENTLY VERIFIED BY THE OWNER OR ITS REPRESENTATIVE. THE CONTRACTOR SHALL DETERMINE THE EXACT LOCATION OF ALL EXISTING UTILITIES PRIOR TO COMMENCING WORK, AND AGREES TO BE FULLY RESPONSIBLE FOR ANY AND ALL DAMAGES WHICH MIGHT BE OCCASIONED BY THE CONTRACTOR'S FAILURE TO EXACTLY LOCATE AND PRESERVE ANY AND ALL UNDERGROUND UTILITIES. THE CONTRACTOR SHALL BE RESPONSIBLE TO CONTACT "DIG SAFE" AT 1(888)344-7233 (1(888)DIG-SAFE) AND COORDINATE ACTIVITIES PRIOR TO ANY EXCAVATIONS.

**TYPICAL ELECTRICAL TRENCHING DETAIL 4**  
 SCALE: NONE

BRIDGE #31

**ELECTRICAL SITE PLAN WITH DETAILS**

READSBORO, VERMONT

**E1**