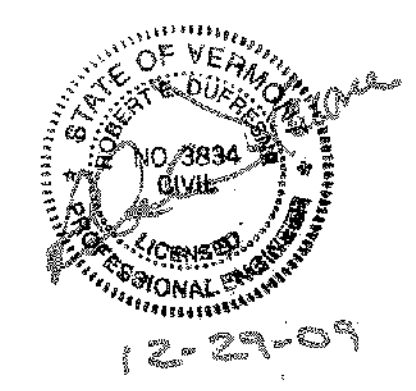


Dufresne & Associates, P.C.
 459 Portland Street, Suite 106
 St. Johnsbury, Vermont 05819
 Tel: (802) 748-8605 Fax: (802) 748-4512
 E-mail: dufresne@vermont.net
 Home page: http://www.dufresneassociates.com

Project #	416006
Project Mgr.	RAW
Design	RNG
Drawn	EAE
Checked by	R.E. DUFRESNE
Date	December 09
Scale	AS SHOWN
Approved by	RNG

Revisions:
 10-27-09: REVISIONS PER VTRANS COMMENTS
 12-23-09: REVISIONS PER VTRANS COMMENTS

THE DRAWINGS FOR THIS PROJECT SHALL NOT BE REUSED OR ALTERED IN ANY WAY WITHOUT THE WRITTEN APPROVAL AND AUTHORITY OF DUFRESNE & ASSOCIATES, P.C. ANY REVISIONS SHALL BE MADE BY THE ENGINEER.
Dufresne & Associates, P.C.



BRIDGE #31

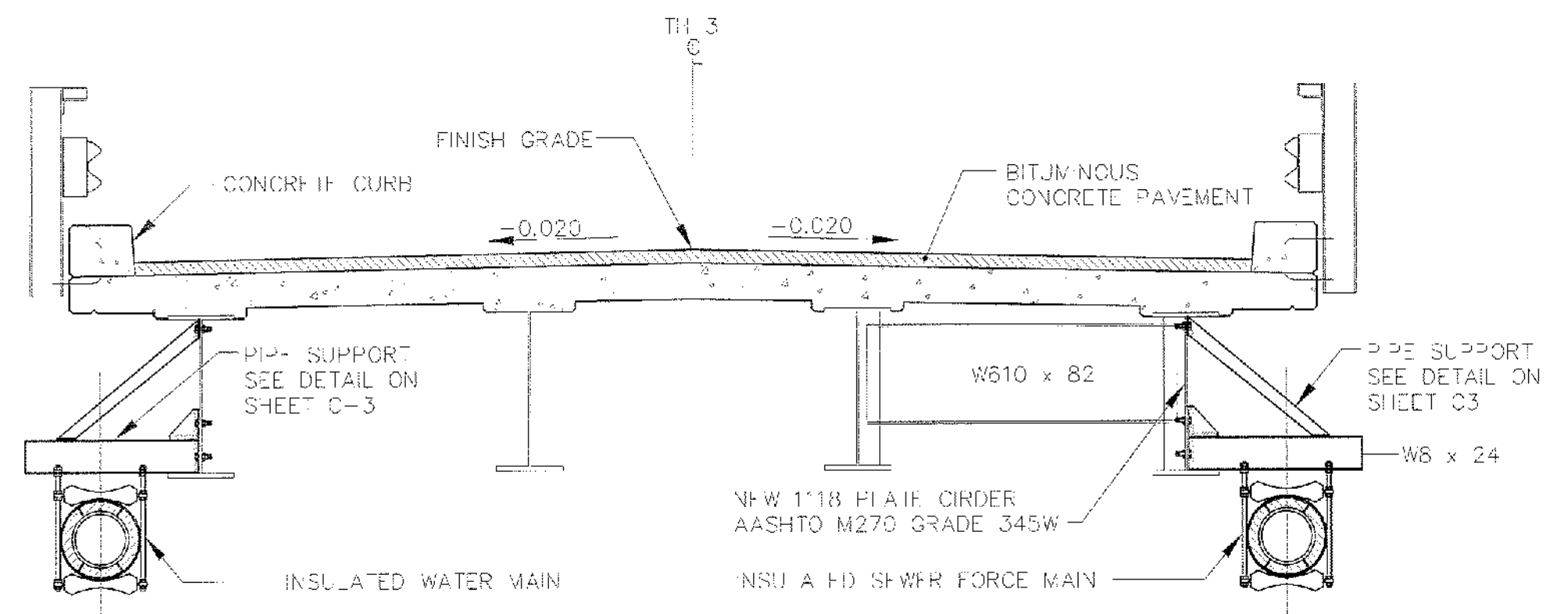
GENERAL DETAILS

READSBORO, VERMONT

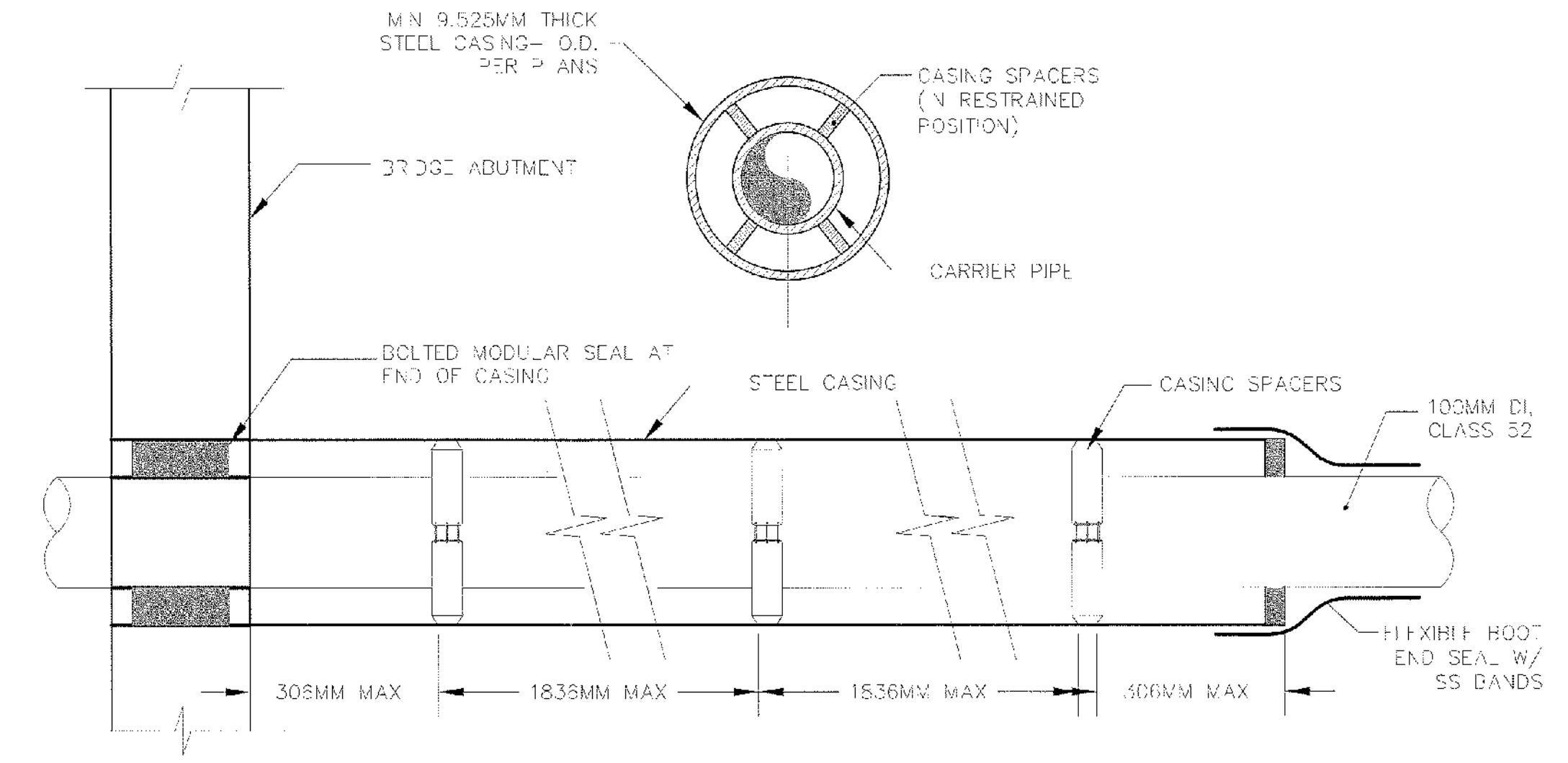
C3

READSBORO
 BRO 1441(25)
 PIPE DETAILS
 SHEET 35 OF 60

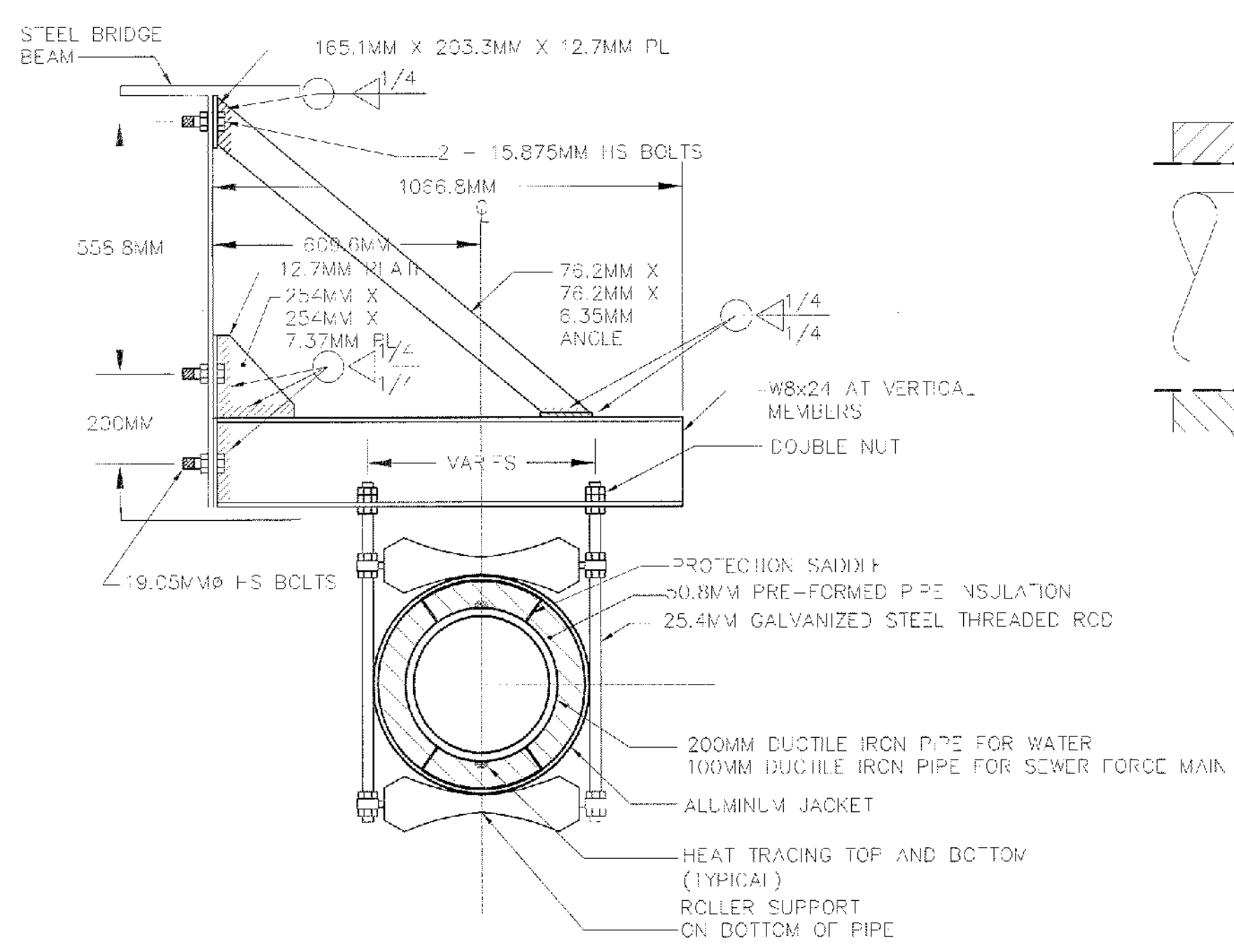
DWG. NO. 416006-C3ED
 SHEET 1 OF 1



TYPICAL PIPE CROSSING BRIDGE SECTION
 NOT TO SCALE

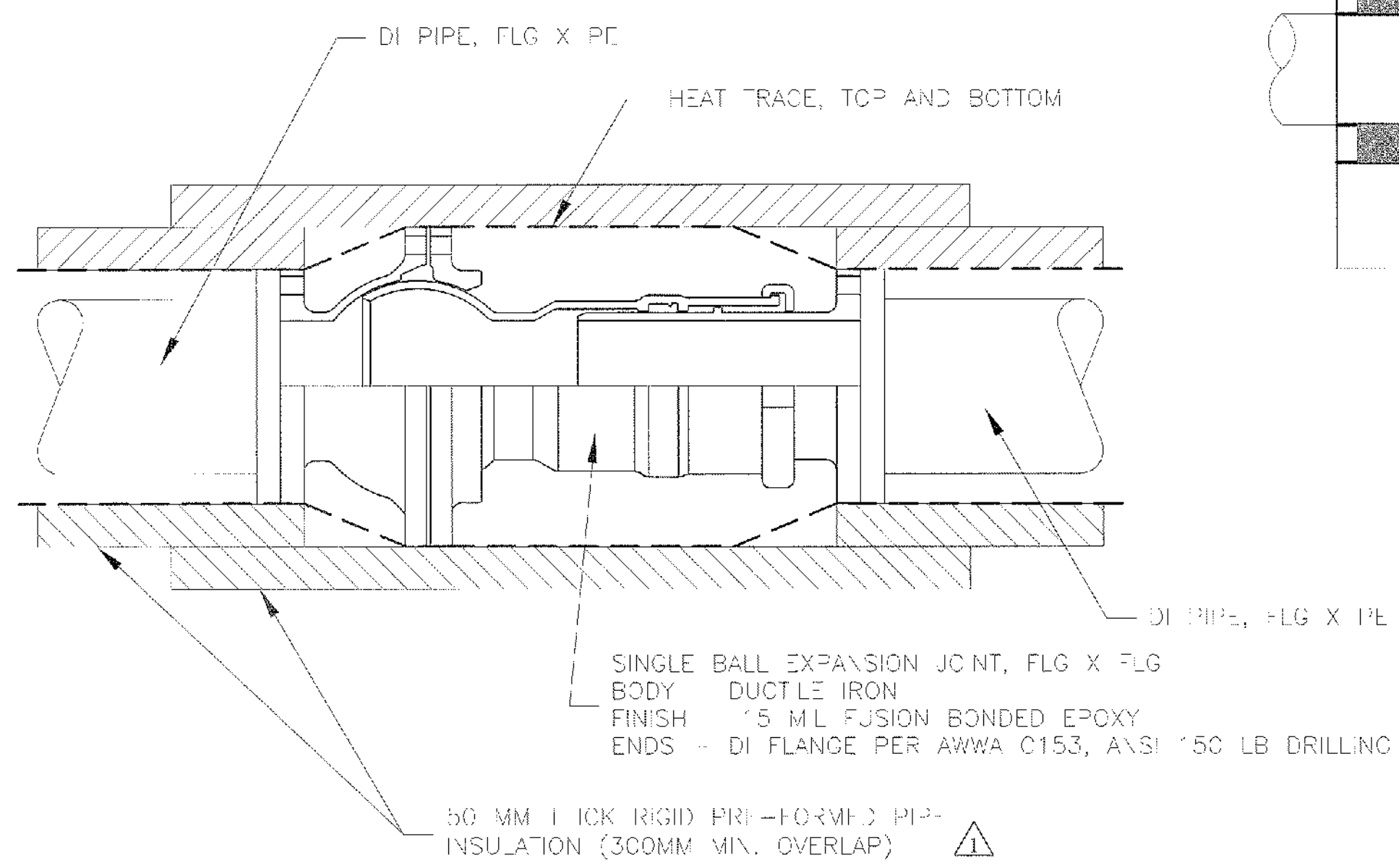


CASING AND SPACER DETAIL
 NOT TO SCALE

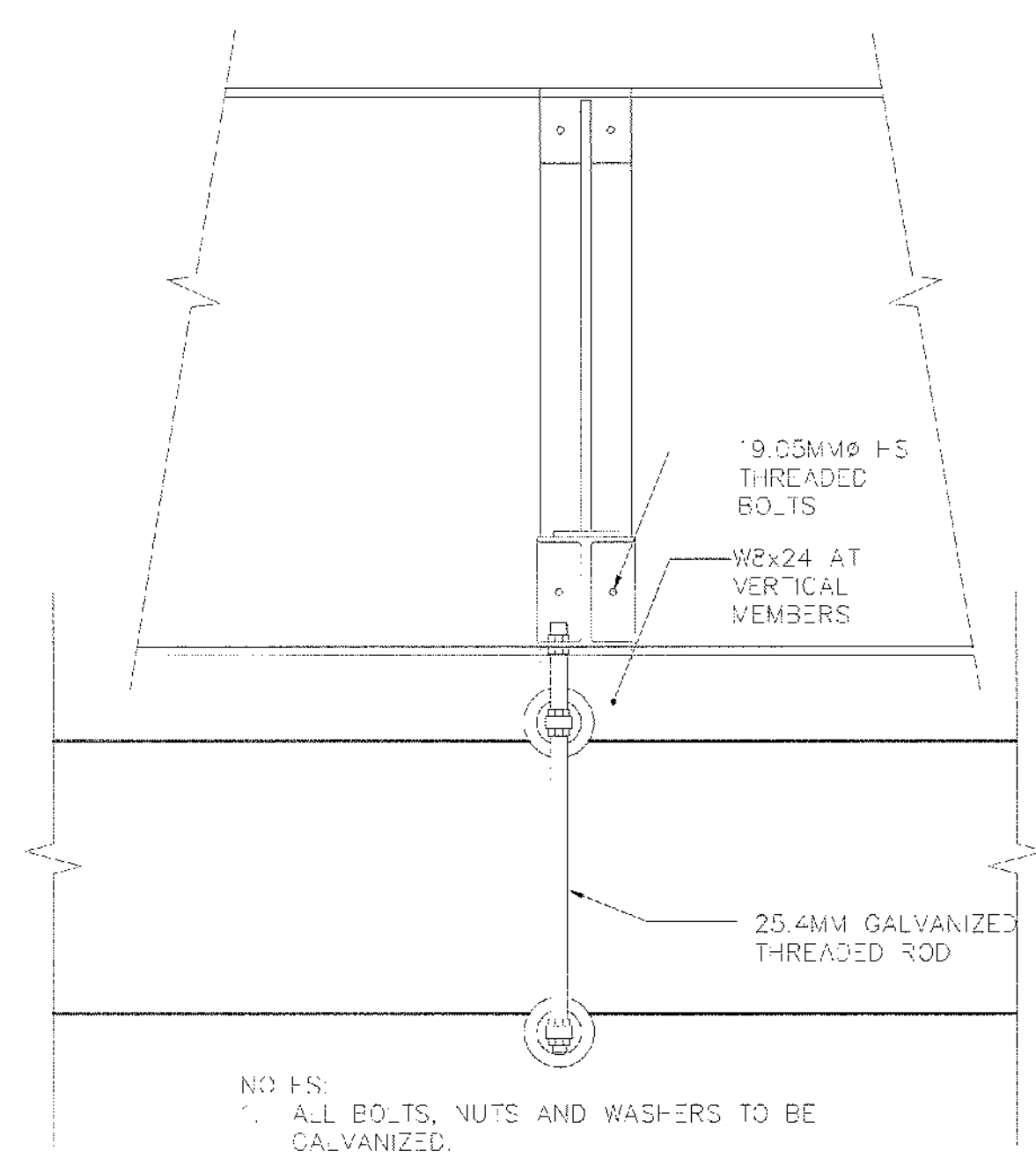


PIPE SUPPORT DETAIL - SECTION VIEW
 NOT TO SCALE

- NOTES:
 1. ALL BOLTS, NUTS AND WASHERS TO BE HOT DIPPED GALVANIZED.
 2. ALL STEEL FABRICATIONS AND CASTINGS SHALL BE HOT DIPPED GALVANIZED.

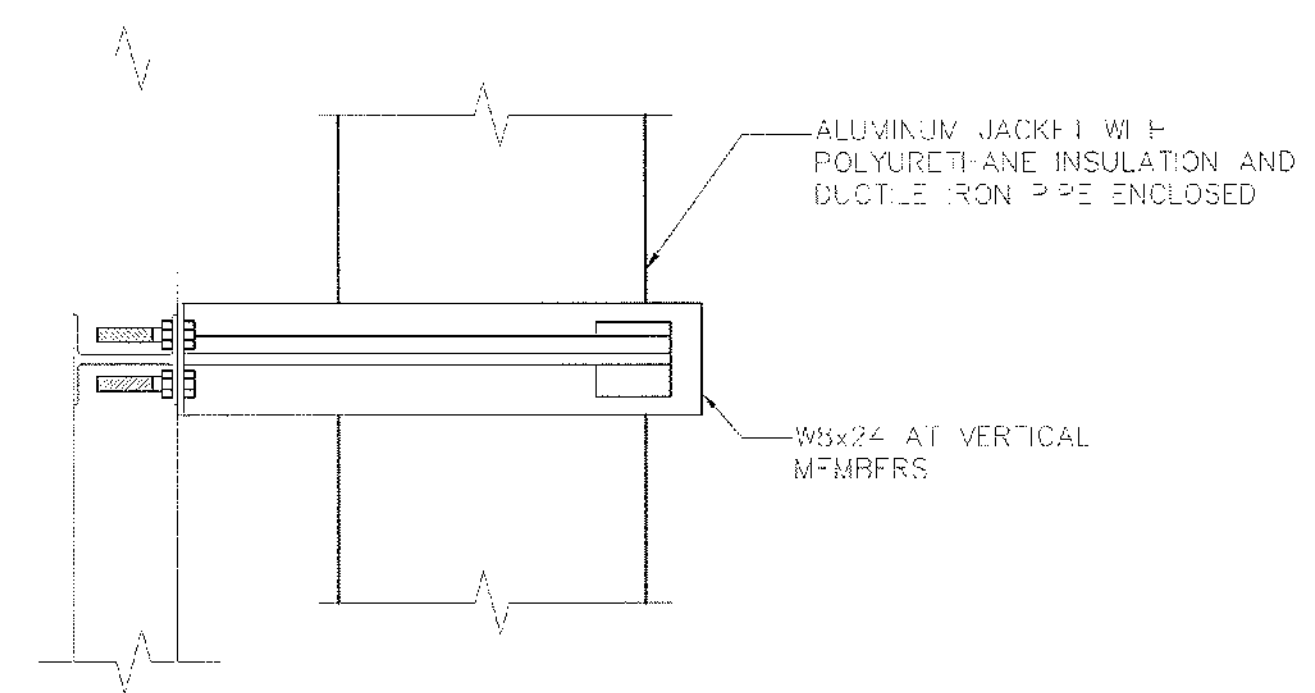


EXPANSION JOINT DETAIL
 NOT TO SCALE



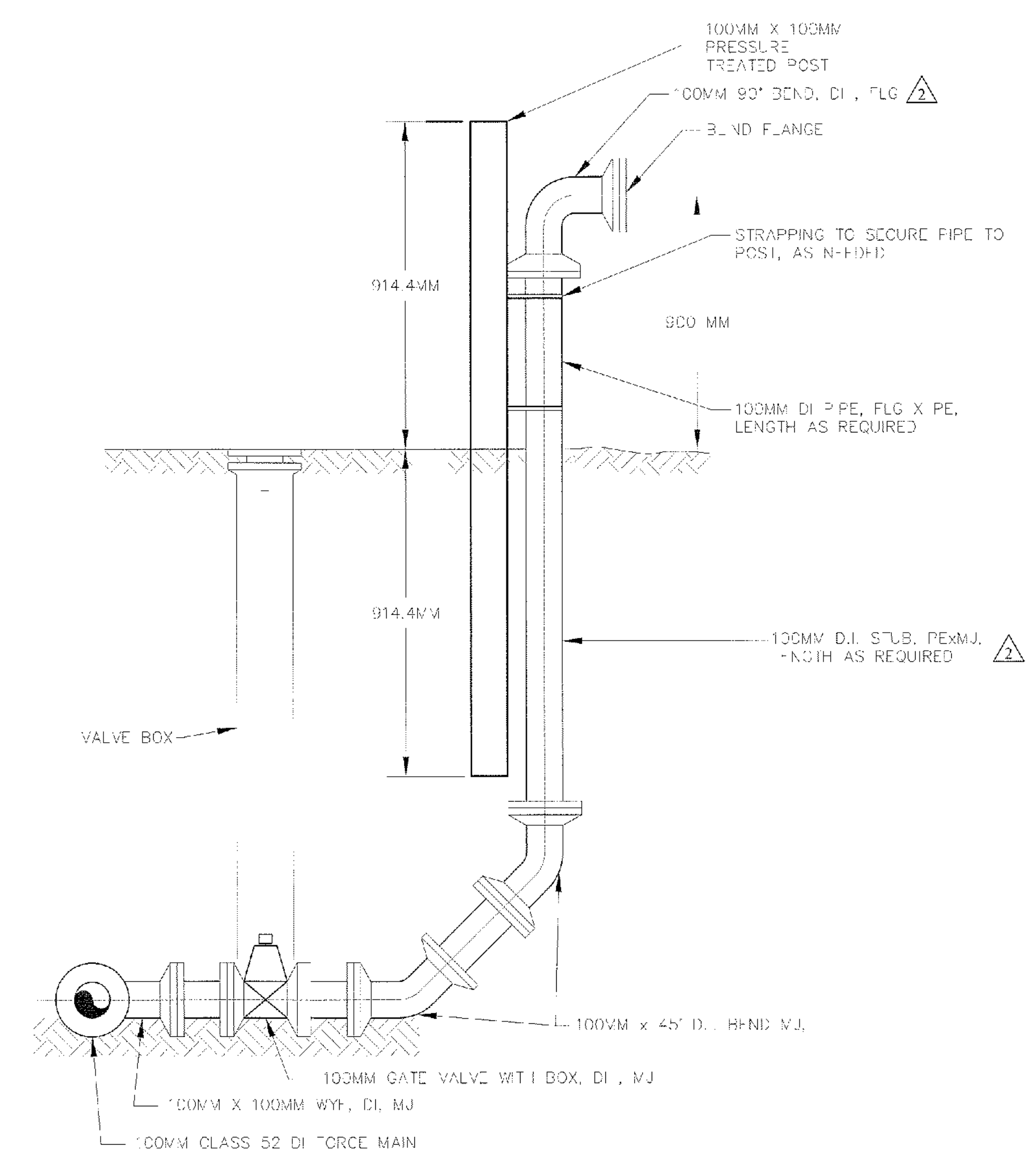
PIPE SUPPORT DETAIL - ELEVATION VIEW
 NOT TO SCALE

- NOTES:
 1. ALL BOLTS, NUTS AND WASHERS TO BE GALVANIZED.
 2. ALL STEEL FABRICATIONS AND CASTINGS SHALL BE HOT DIPPED GALVANIZED.



PIPE SUPPORT DETAIL - PLAN VIEW
 NOT TO SCALE

- NOTES:
 1. ALL BOLTS, NUTS AND WASHERS TO BE GALVANIZED.
 2. ALL STEEL FABRICATIONS AND CASTINGS SHALL BE HOT DIPPED GALVANIZED.
 3. ALL ALUMINUM SHALL BE ANODIZED BLACK.



FORCE MAIN CLEANOUT
 NOT TO SCALE

P:\1441\1441-25\1441-25.dwg 12/23/09 10:11 AM