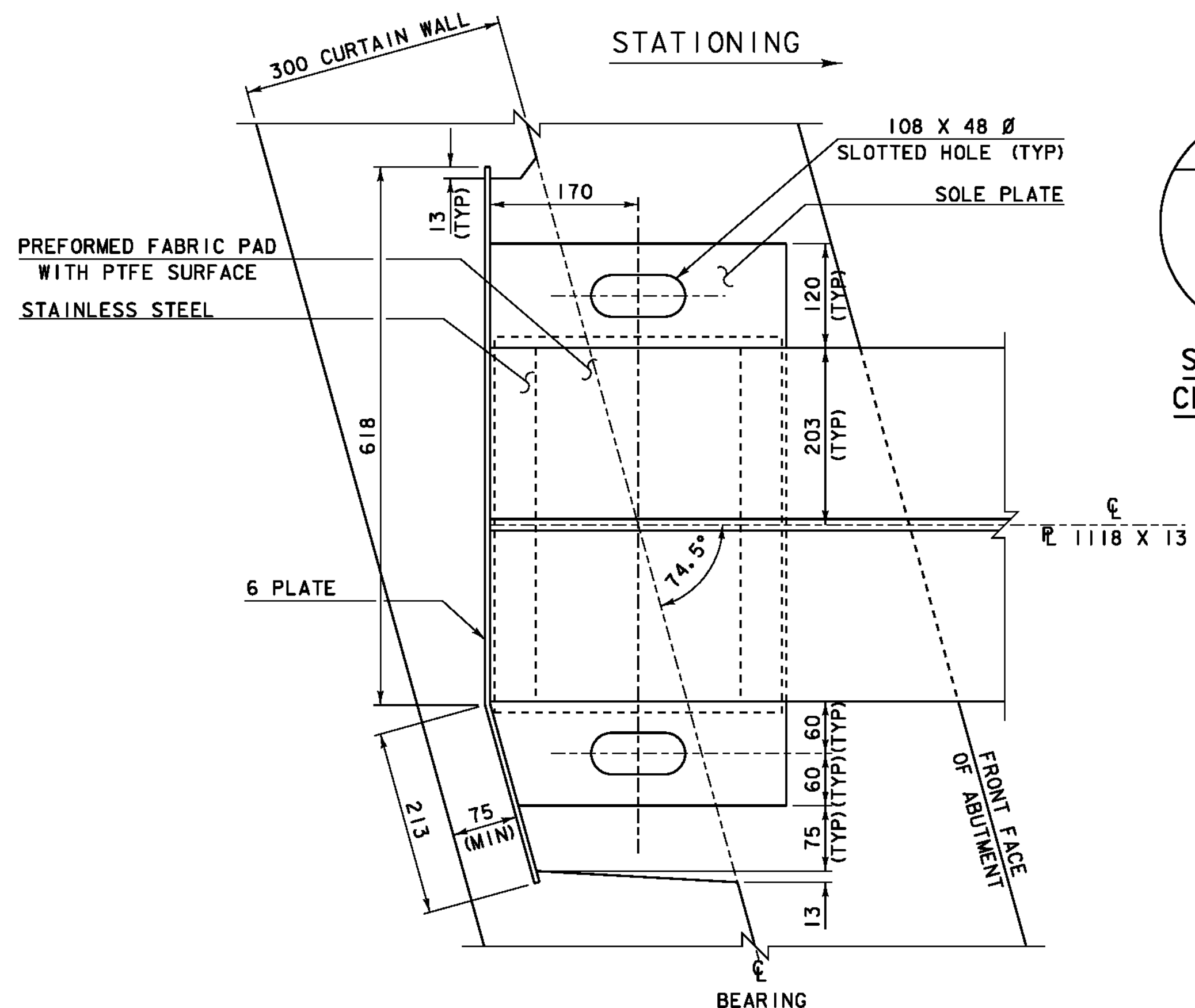
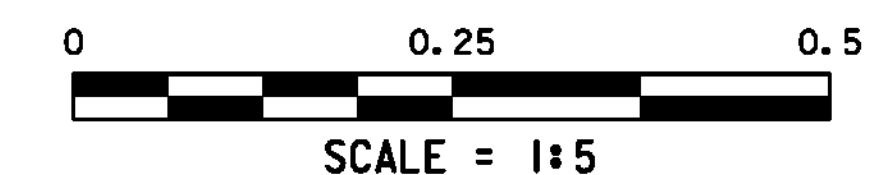


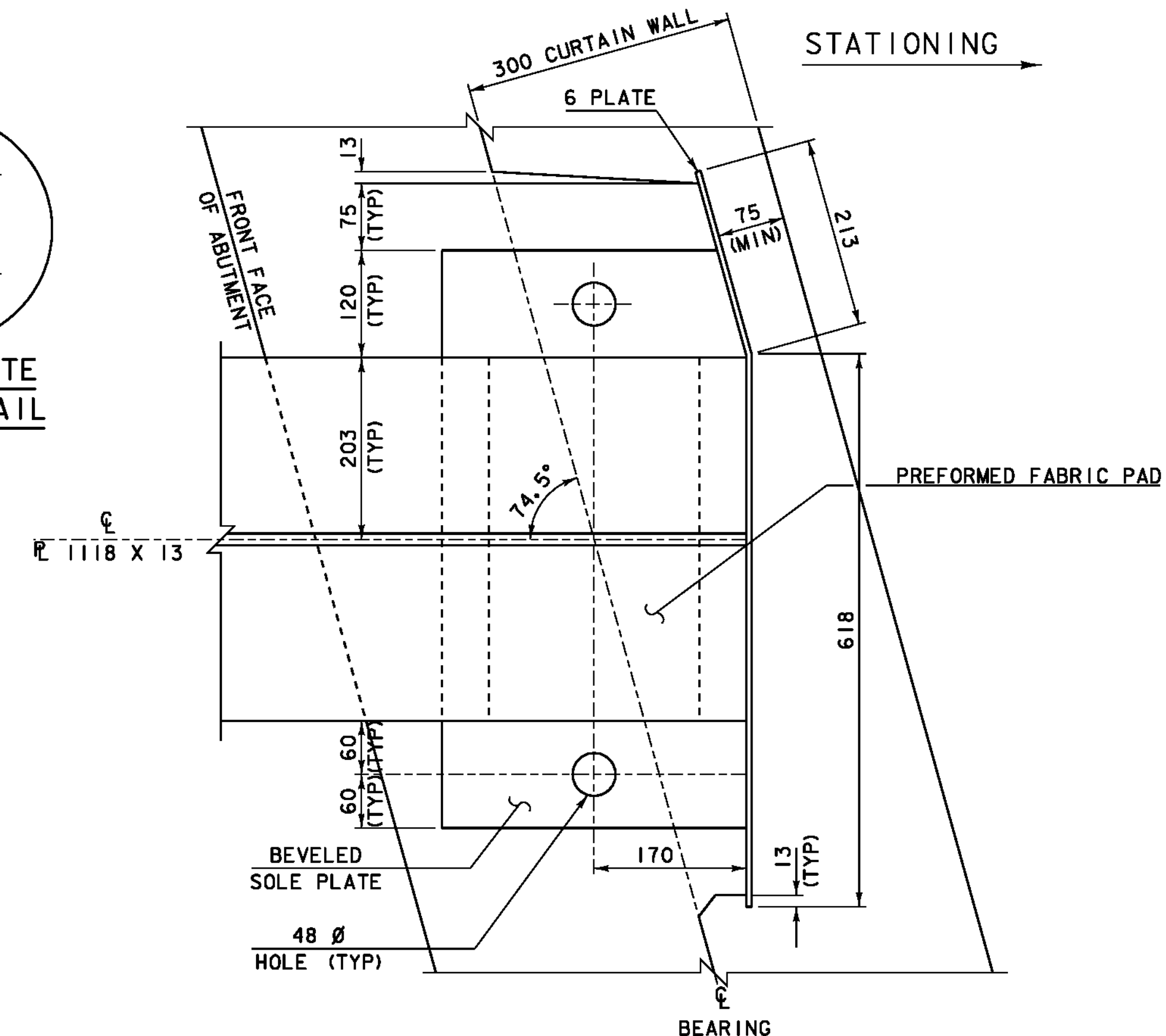
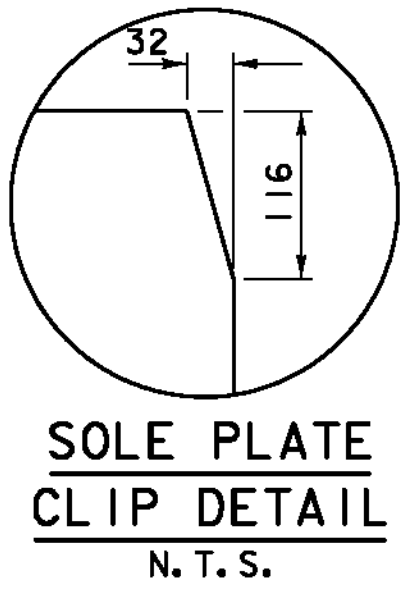
### BEARING NOTES

- BEARINGS SHALL BE PAID FOR UNDER THE ITEM 531.10 "BEARING DEVICE ASSEMBLY, PREFORMED FABRIC PAD" AND SHALL CONFORM TO APPLICABLE SUBSECTIONS OF SECTIONS 531 AND 731.
- THE FIELD WELD CONNECTING THE BOTTOM FLANGE WITH THE BEARING DEVICE SHALL BE MADE WITH E7018 RODS. AREAS OF GALVANIZING OR METALIZING DAMAGED BY WELDING AND/OR HANDLING SHALL BE PAINTED WITH A ZINC RICH PAINT IN ACCORDANCE WITH SECTION 513.
- ALTERNATE CONFIGURATIONS FOR BEARINGS MAY BE SUBMITTED FOR APPROVAL. ANY ALTERNATE SUBMITTED SHALL BE DESIGNED AND CERTIFIED TO MEET THE DESIGN LOADS AND CRITERIA SHOWN ON THIS SHEET, AND SHALL MAINTAIN THE ANCHORAGE SYSTEM SHOWN.
- BRIDGE SEAT ELEVATIONS MAY BE REVISED TO ACCOMMODATE AN ALTERNATE CONFIGURATION.
- THE "A" DISTANCE IS THE SOLE PLATE ADJUSTMENT TO BE USED BEFORE DEAD LOAD IS ADDED TO THE GIRDERS. THE "B" DISTANCE IS THE SOLE PLATE ADJUSTMENT TO BE USED AFTER THE DECK CURBS HAVE BEEN POURED. THE DIFFERENCE IS THE THEORETICAL ELONGATION OF THE BOTTOM FLANGE DUE TO DEAD LOAD DEFLECTION FROM THE DECK AND CURBS. THE FINAL "B" DISTANCE MUST BE REACHED WITHIN 3mm.
- DESIGN CRITERIA:
  - A: BASE PLATE TO CONCRETE DESIGN PRESSURE = 7500 kPa.
  - B: MINIMUM ALLOWABLE DESIGN ROTATION = 0.015 RADIAN.
  - C: HORIZONTAL CAPACITY SHALL BE A MINIMUM 10% OF VERTICAL LOAD.
  - D: DESIGN LOAD PER BEARING = 655.22 kN.
    - DL = 260.67 kN
    - L + I = 353.32 kN
    - SDL = 41.23 kN
    - 
    - 655.22 kN
- FABRICATION DRAWINGS CONFORMING TO SECTION 531 SHALL BE SUBMITTED AND INCLUDE ANY NECESSARY WELDING OR BONDING PROCEDURES.
- SOLE PLATES, ANCHOR BOLTS, NUTS, AND WASHERS SHALL BE GALVANIZED OR METALIZED AS PER SUBSECTION 531.04 (b) AND 506.15 (a) & (b). IF THE BEARINGS ARE METALIZED THEY SHALL BE SEALED WITH AN APPROVED PRIMER AS SPECIFIED IN SUBSECTION 506.15 (b). ALL WASHERS SHALL BE 9.5mm PLATE MINIMUM. PAYMENT FOR ANCHOR BOLTS, NUTS, AND WASHERS SHALL BE INCLUDED IN THE UNIT BID PRICE OF 531.10 "BEARING DEVICE ASSEMBLY, PREFORMED FABRIC PAD".
- THE CONCRETE SURFACE AROUND THE BEARING SHALL SLOPE TOWARDS THE FACE OF ABUTMENT AT A MINIMUM RATE OF 2.0% OR AS PRACTICAL. THE CONCRETE SURFACE DIRECTLY UNDER THE BEARING SHALL BE LEVEL.
- ALL STEEL IN BEARING DEVICES (EXCEPT STAINLESS STEEL) AS WELL AS THE 6mm PLATE SHALL BE AASHTO M 270 M/M 270 GRADE 345.

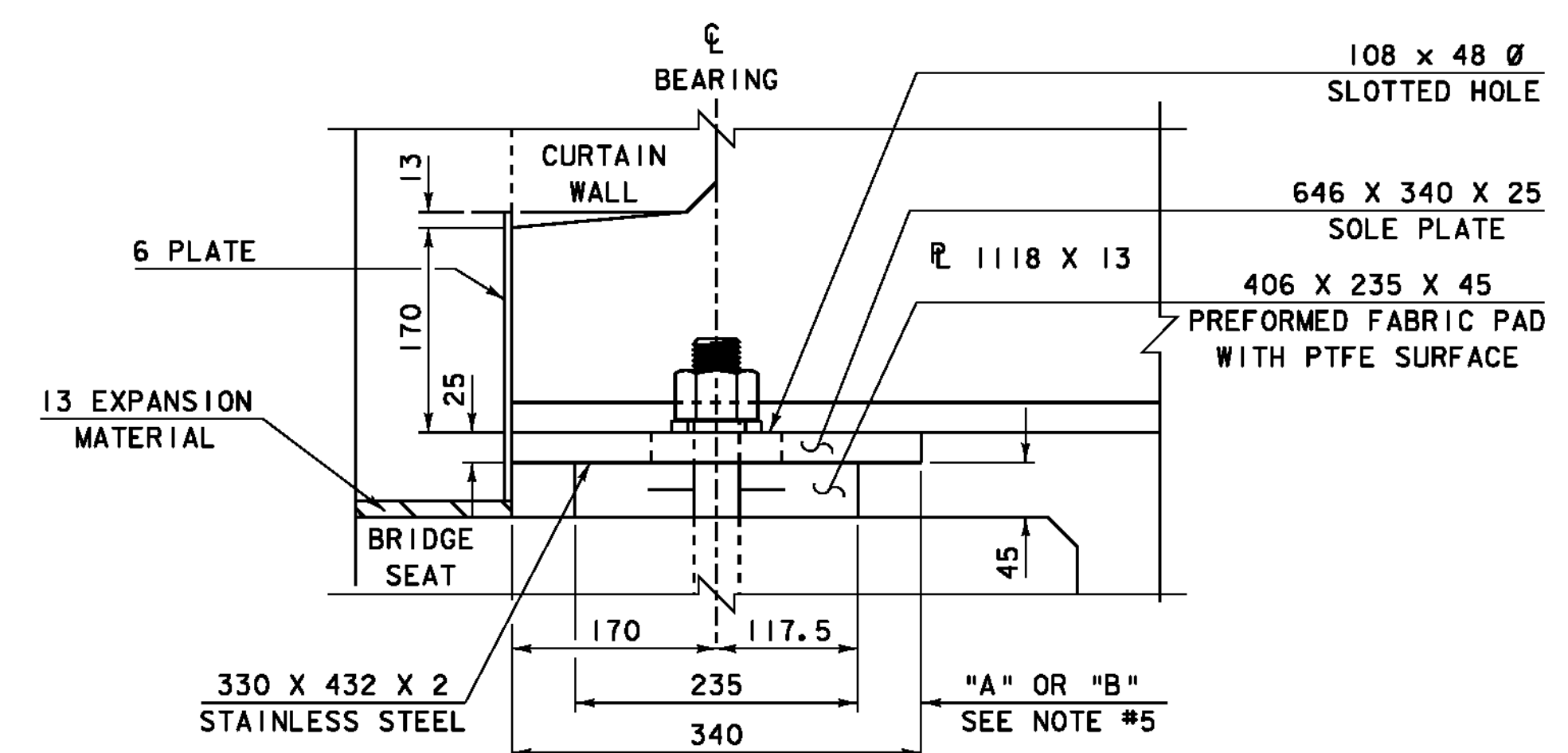
| TEMP °C | "A" DIST | "B" DIST |
|---------|----------|----------|
| -35     | 58       | 39       |
| -30     | 60       | 41       |
| -20     | 63       | 45       |
| -10     | 67       | 48       |
| 0       | 70       | 52       |
| 10      | 74       | 55       |
| 20      | 77       | 58       |
| 30      | 81       | 62       |
| 40      | 84       | 65       |
| 50      | 88       | 69       |
| 55      | 89       | 71       |



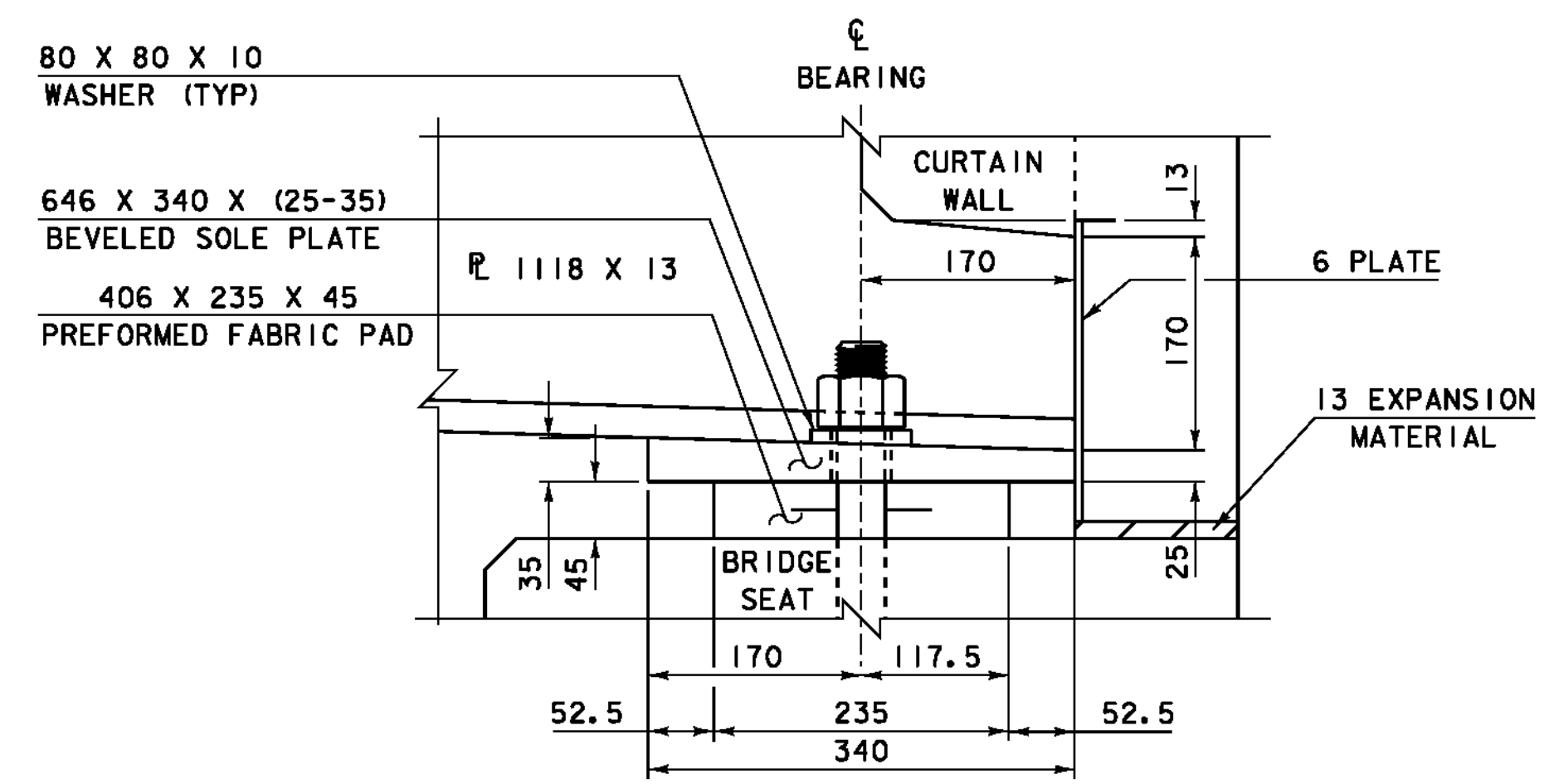
**ABUTMENT #1 EXPANSION BEARING PLAN VIEW**  
SCALE 1:5



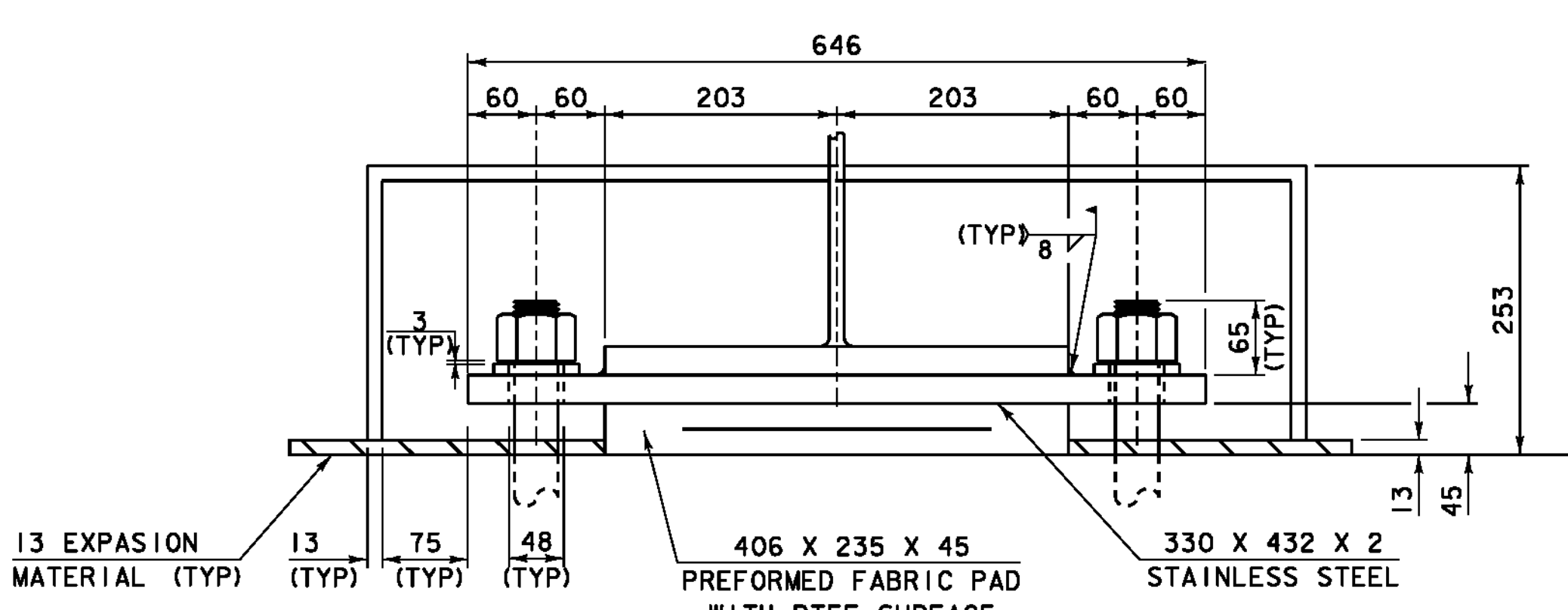
**ABUTMENT #2 FIXED BEARING PLAN VIEW**  
SCALE 1:5



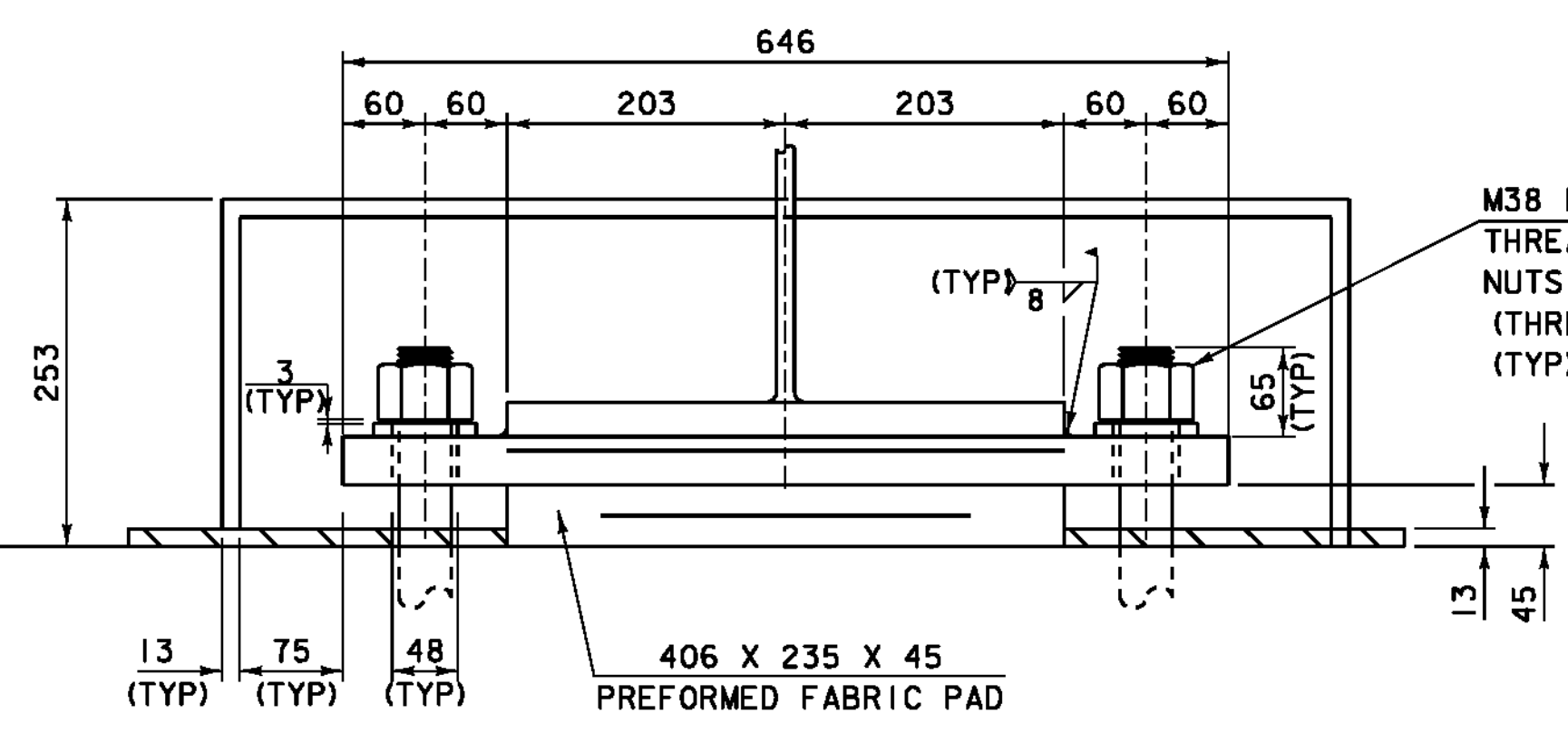
**ABUTMENT #1 BEARING ELEVATION VIEW**  
SCALE 1:5



**ABUTMENT #2 BEARING ELEVATION VIEW**  
SCALE 1:5



**ABUTMENT #1 BEARING FRONT VIEW**  
SCALE 1:5



**ABUTMENT #2 BEARING FRONT VIEW**  
SCALE 1:5

M38 DIA X 600 ANCHOR BOLTS, SWEDGED, GALV.  
THREAD LENGTH = 100 MINIMUM EMBEDMENT OF 380.  
NUTS TO BE DRAWN UP TIGHT THEN BACKED OFF 3.  
(THREADS SHALL BE BURRED TO PREVENT NUT REMOVAL)  
(TYP)

|   |                                      |
|---|--------------------------------------|
| PROJECT:<br><b>READSBORO</b>                    | PROJECT NO.:<br><b>BRO 1441 (25)</b> |
| DESIGN FILE NAME: 94J070Structures\sj070sup.dgn | PLOT DATE: 05-JAN-2010               |
| IPARM FILE NAME: 94J070brg.i                    | DRAWN BY: D. D. BEARD                |
| DESIGNED BY: H. I. SALLS                        | CHECKED BY: R. S. YOUNG              |
| SQUAD LEADER: C. P. WILLIAMS                    |                                      |
| BEARING DETAIL SHEET                            | SHEET: 24 OF 60                      |