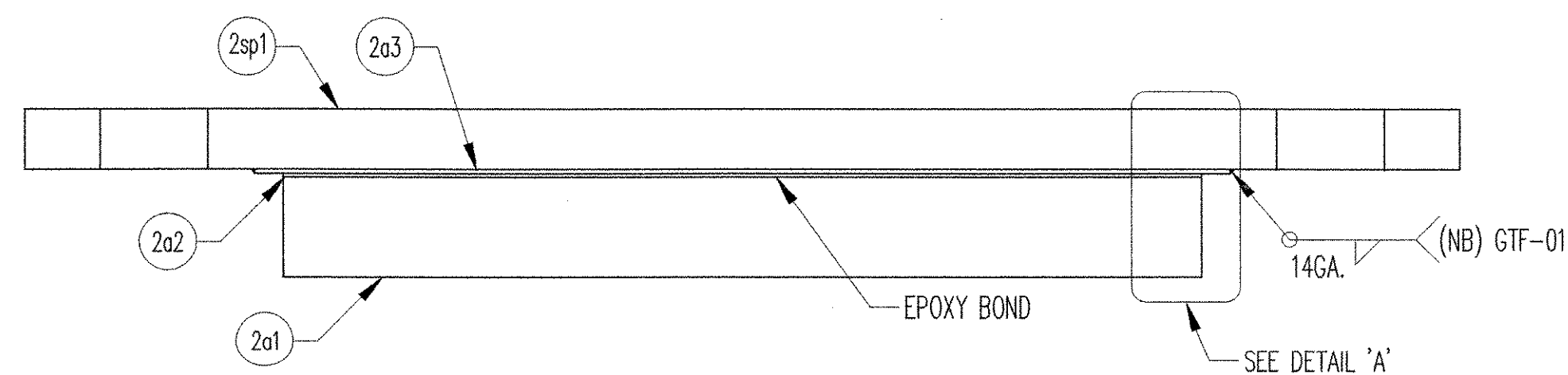
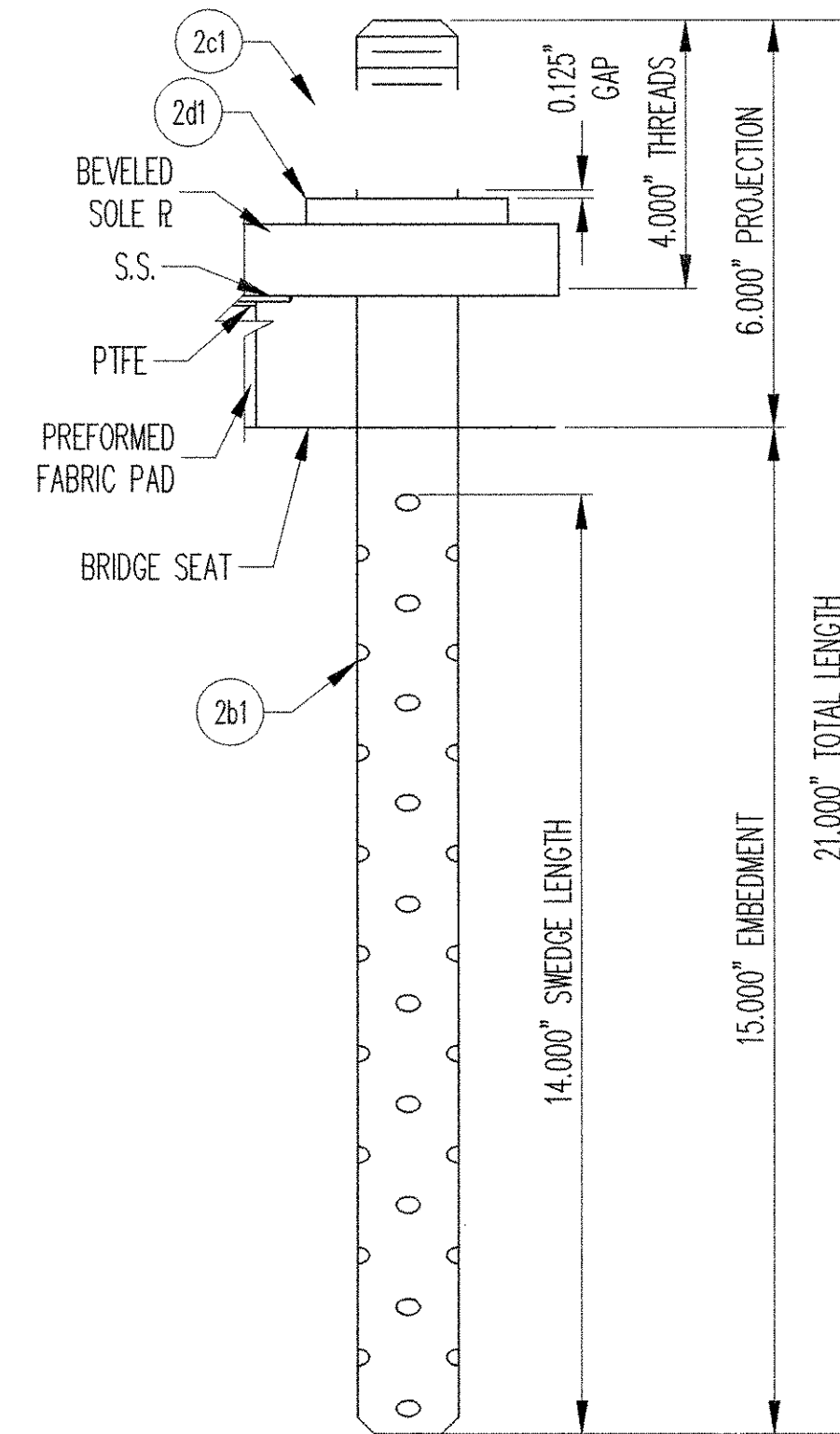


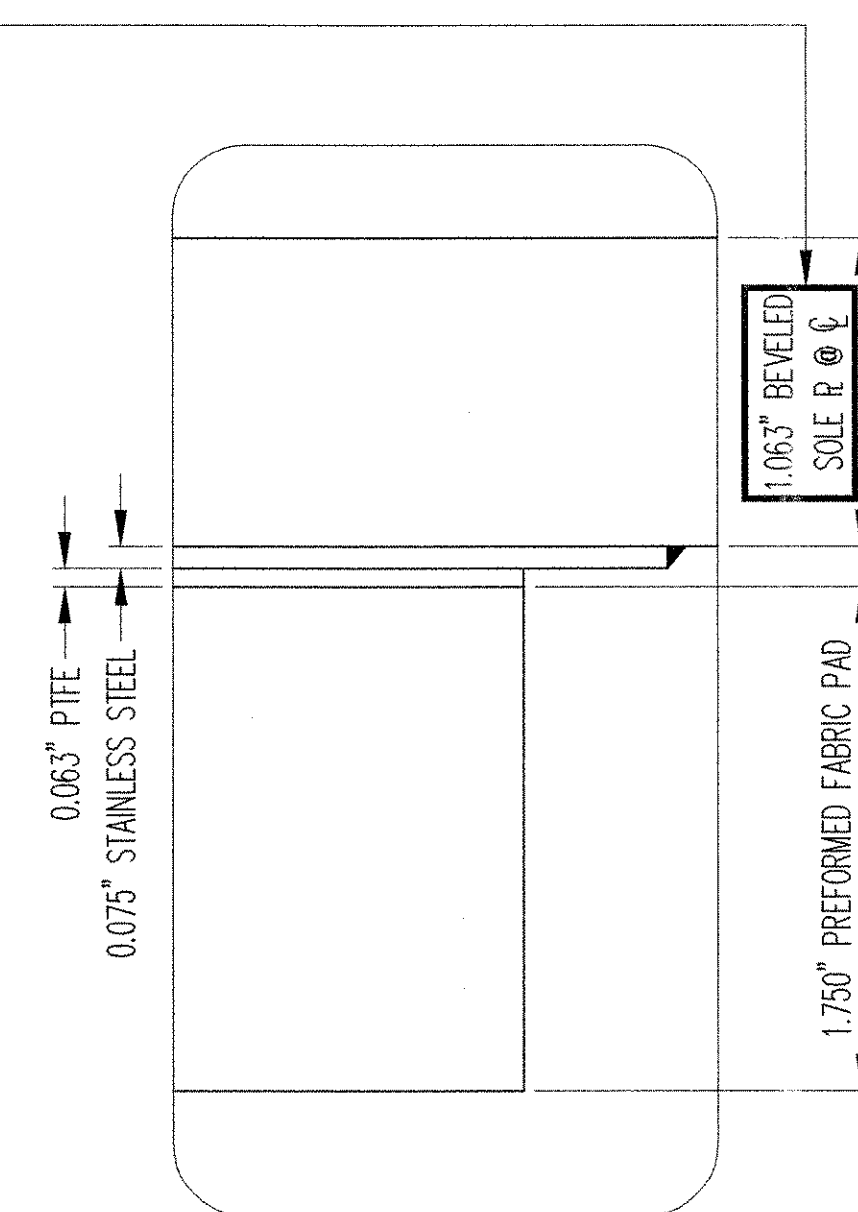
PLAN VIEW
SLIDING PREFORMED FABRIC BEARING
(5) REQ'D @ ABUT. 2



SECTION 'A-A'



SWEDGE ROD DETAIL



DETAIL 'A'

MK	QTY.	DESCRIPTION	MATERIAL	LENGTH	REMARKS	PART NO.
2A	5	SLIDING PREFORMED FABRIC BEARING				
2a1	5	1.750" X 16.000"	AASHTO 18.4.10.1	9.000"	EPOXY BOND TO SOLE PLATE	
2a2	5	0.063" X 16.000"	PTFE	9.000"	PURE VIRGIN UNFILLED	
2a3	5	14 GA. X 17.000"	A240.304.#8	12.875"	CLIP CORNER; PLAIN	
2sp1	5	1.125" X 25.000"	A709 GR 36	13.000"	BEVEL, CLIP CORNER; METALIZE	
2B	10	SWEDGE ROD				
2b1	10	1.500"Ø X 21.000"	A449		4.000" THREADS, 14.000" SWEDGE; A153-HDG	
2C	10	HEAVY HEX NUT				
2c1	10	1.500"Ø	A563-DH/A194-2H		A153-HDG	
2D	10	WASHER PLATE				
2d1	10	0.375" X 3.000"	A36	6.000"	1.875" DIAMETER HOLE @ CENTER OF PLATE; A153-HDG	

NOTE: ALL MATERIAL SPECIFICATION DESCRIPTIONS ARE ASTM, UNLESS OTHERWISE NOTED.

LOAD TABLE

LOAD DATA	KIPS
DL + SDL	57
LL + I	73
TOTAL	130

RECEIVED
OK'D BY _____ OK'D BY _____
JAN 05 2004
RESUBMIT _____ APPROVED _____
BY RRW DATE 1-8-04

SEE SHT. GN1 FOR GENERAL NOTES & COATING LIMITS.

D.S. BROWN
300 E. CHERRY STREET
NORTH BALTIMORE, OHIO 45872
419.257.3561
FAX: 419.257.0332
4201 NOREX DRIVE
CHASKA, MINNESOTA 55318
952.368.3000
FAX: 952.448.7000
DSBROWN.COM



REV.	DESCRIPTION	DATE	DET.	CKD.	
	LOCATION — BOSTWICK ROAD OVER VERMONT RAILWAY		ITEM	QUANTITY	
	BRIDGE — 15		10251-1106-2	5 OF 5	
	PROJECT — BRO 1445(30)				
	HIGHWAY — TH3				
	P.O. NO. — 7890				
	DESIGNER — McFARLAND-JOHNSON, INC.				
	CUSTOMER — S.D. IRELAND CONSTRUCTION				
DESCRIPTION: SLIDING PREFORMED FABRIC BEARING CHITTENDEN CO., VERMONT		SCALE: N.T.S.	DRAWN BY: D.ANDERSON	CHECKED BY: R. SCHADE	DATE: 12/23/03
		PROJECT NUMBER: 10251	PRODUCT CODE: 1106	RELEASE: 1	SHEET: 02