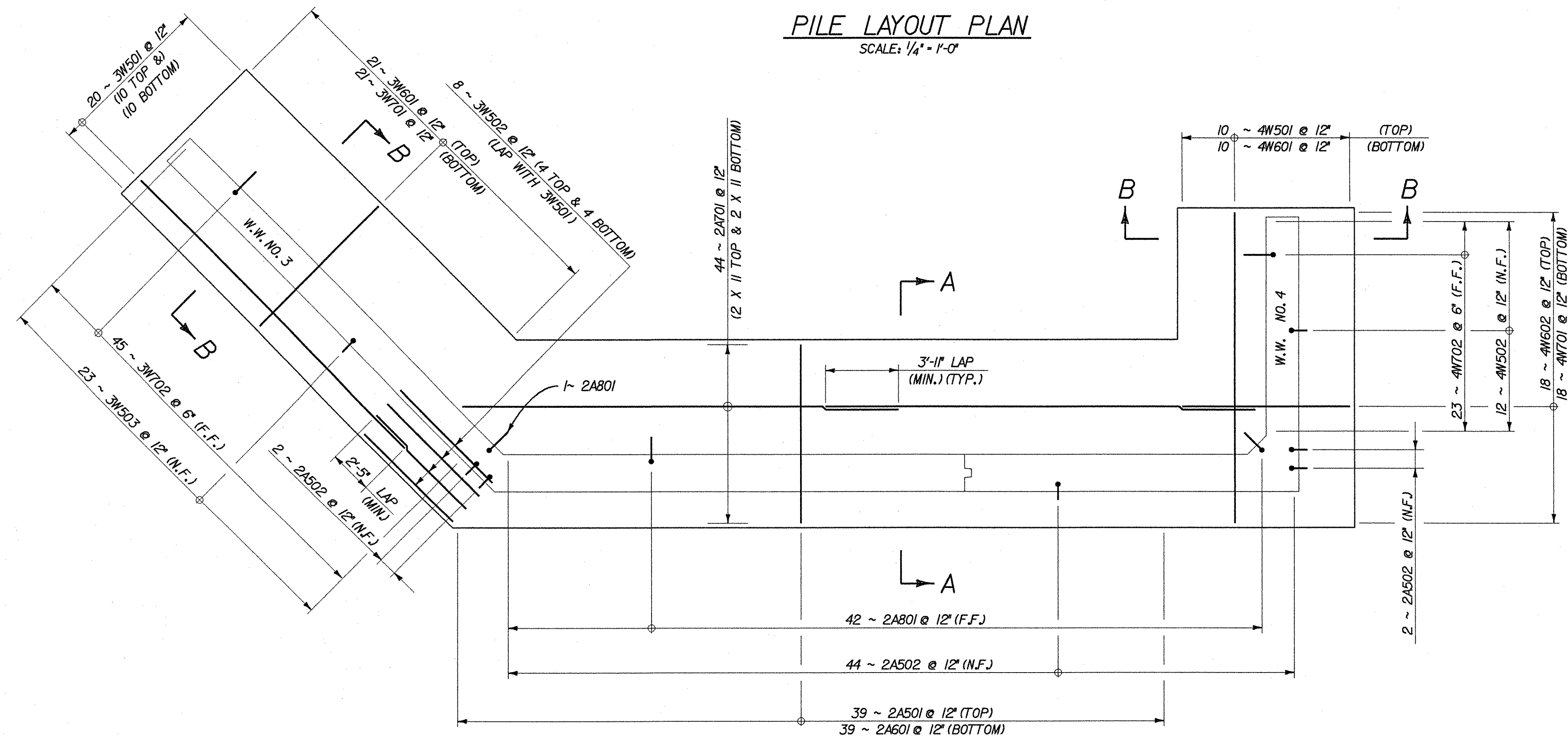
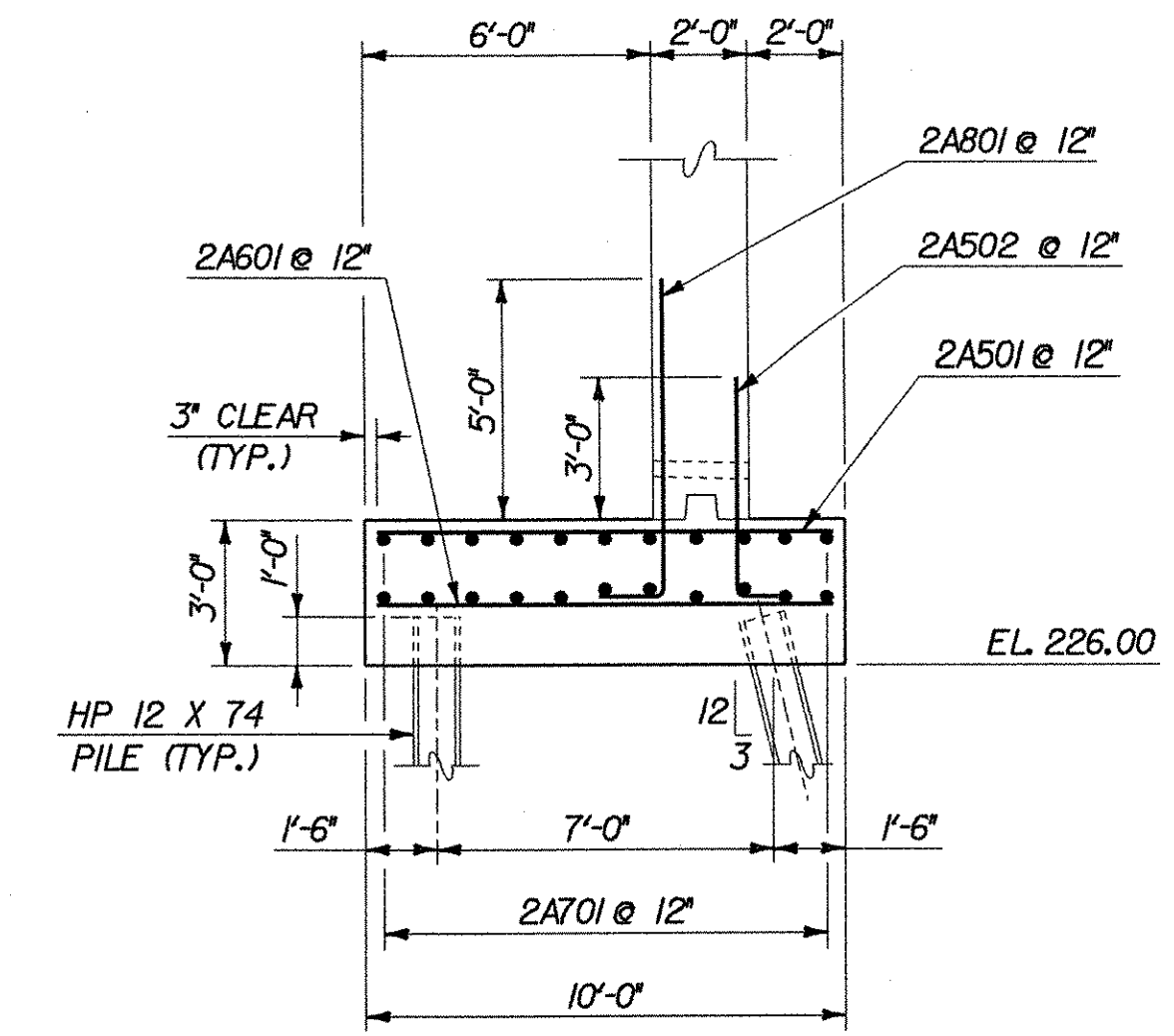


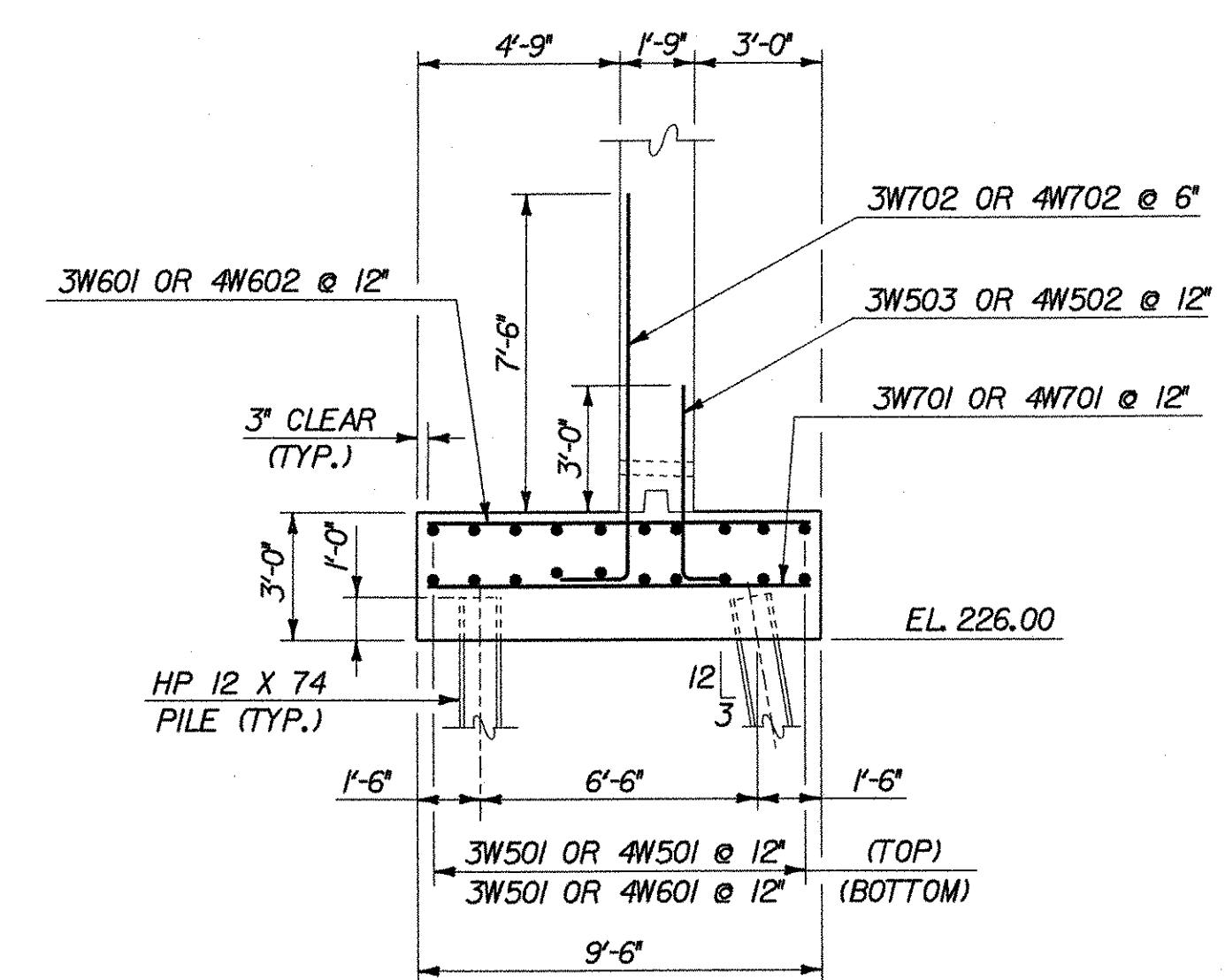
**PILE LAYOUT PLAN**  
SCALE: 1/4" = 1'-0"



**PLAN (REINFORCING)**  
SCALE: 1/4" = 1'-0"



**SECTION A-A**  
SCALE: 1/4" = 1'-0"



**SECTION B-B**  
SCALE: 1/4" = 1'-0"

**NOTES**

1. MINIMUM COVER FOR REINFORCING STEEL IN FOOTING SHALL BE 3".

**LEGEND**

- N.F. = NEAR FACE
- F.F. = FAR FACE
- E.F. = EACH FACE
- ▲ = CUT TO FIT IN FIELD
- ⊥ = VERTICAL PILE
- ↘ = PILE BATTERED 3:12

**STATE OF VERMONT  
AGENCY OF TRANSPORTATION**

Town Of	SHELBURNE	Bridge No.	15
Highway No.	TH 3	Log Sta.	
BOSTWICK ROAD OVER VERMONT RAILWAY		Surv. Sta.	
<b>ABUTMENT NO. 2 FOOTING</b>			
Designed By	L. WIXSON	Drawn By	S. MERKMAN
Checked By	R. JOY	Date	05/03
		Bridge Design Supervisor	M. ZYDEL
PROJECT		PROJECT NO.	
SHELBURNE		BRO 1445(30)	
I.G.C. Info. M:\595402 Bostwick\BRIDGE\6m\1r\z\196a2f.dgn			
Bridge Sheet No. BR15		Sheet 55 of 73	



PLOTTED 01-AUG-2003