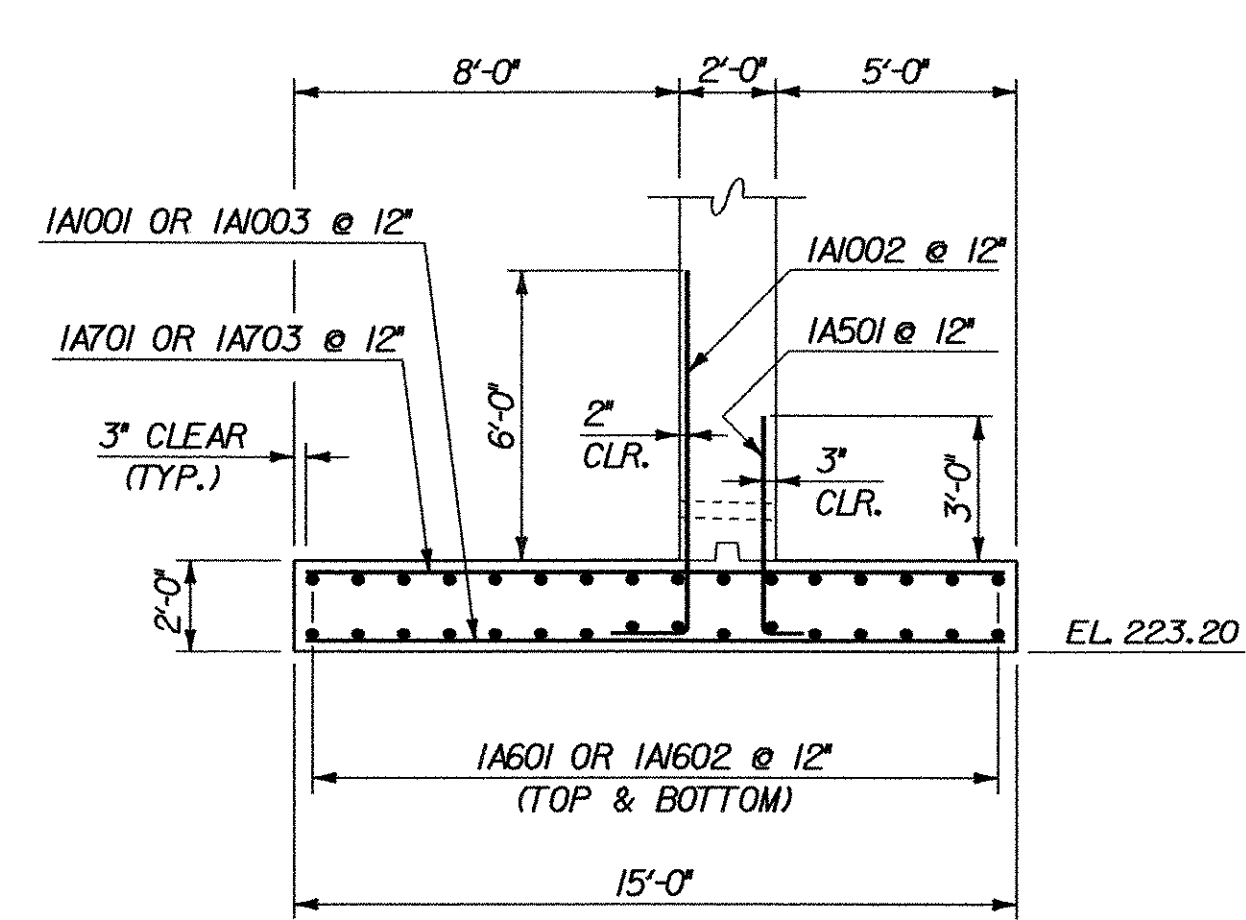
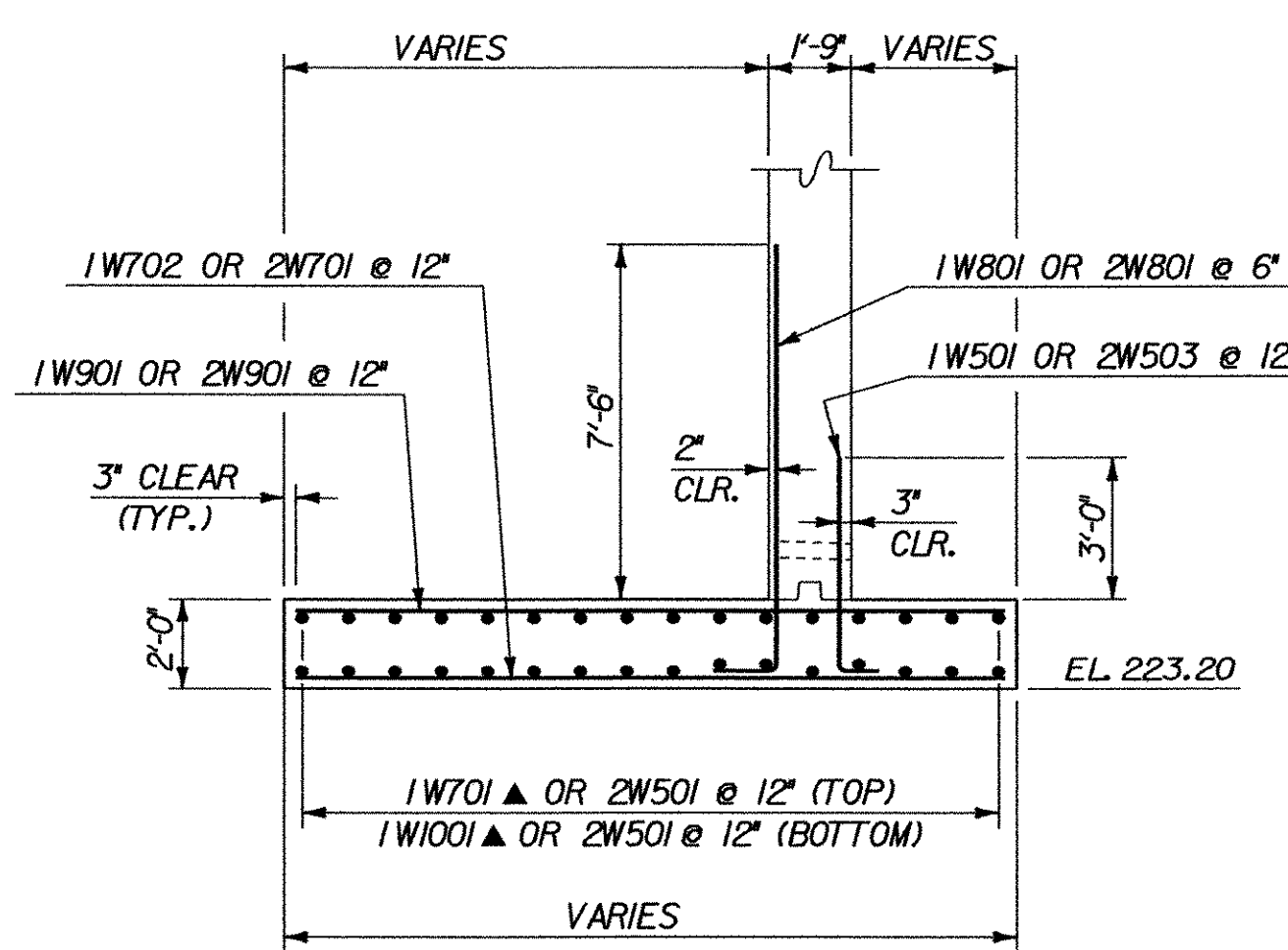


PLAN (REINFORCING)
SCALE: 1/4" = 1'-0"



SECTION A-A
SCALE: 1/4" = 1'-0"



SECTION B-B
SCALE: 1/4" = 1'-0"

NOTES

- 1. MINIMUM COVER FOR REINFORCING STEEL IN FOOTING SHALL BE 3".

LEGEND

- N.F. = NEAR FACE
- F.F. = FAR FACE
- E.F. = EACH FACE
- ▲ = CUT TO FIT IN FIELD

△ WINGWALL NO. 1 LAYOUT REVISED

**STATE OF VERMONT
AGENCY OF TRANSPORTATION**

Town Of	SHELBURNE	Bridge No.	15
Highway No.	TH 3	Log Sta.	
		Surv. Sta.	
BOSTWICK ROAD OVER VERMONT RAILWAY			
ABUTMENT NO. 1 FOOTING (REVISED)			
Designed By	L. WIXSON / S. DELIA	Drawn By	S. MERKMAN / S. DELIA
Checked By	R. JOY	Bridge Design Supervisor	M. ZYDEL
Date	03/04	Date	03/04
PROJECT	SHELBURNE	PROJECT NO.	BRO 1445(30)
I.G.C. Info. G:\Structures\STR3_Roger Whitcomb\Consultants\McFarland-Johnson\Shelburne			
Bridge Sheet No.	BRI13A	Sheet	53A of 73



PLOTTED 24-MAR-2004