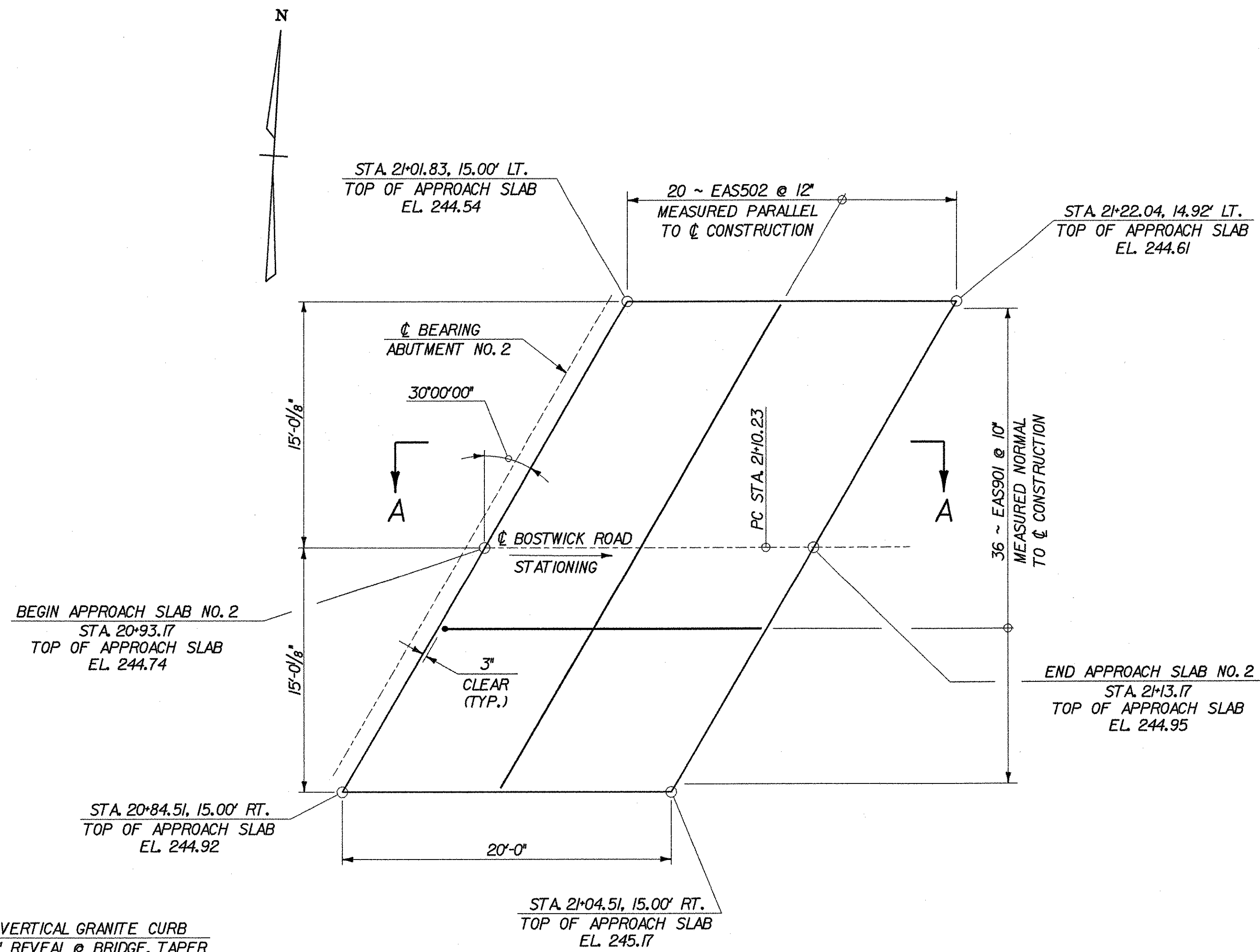
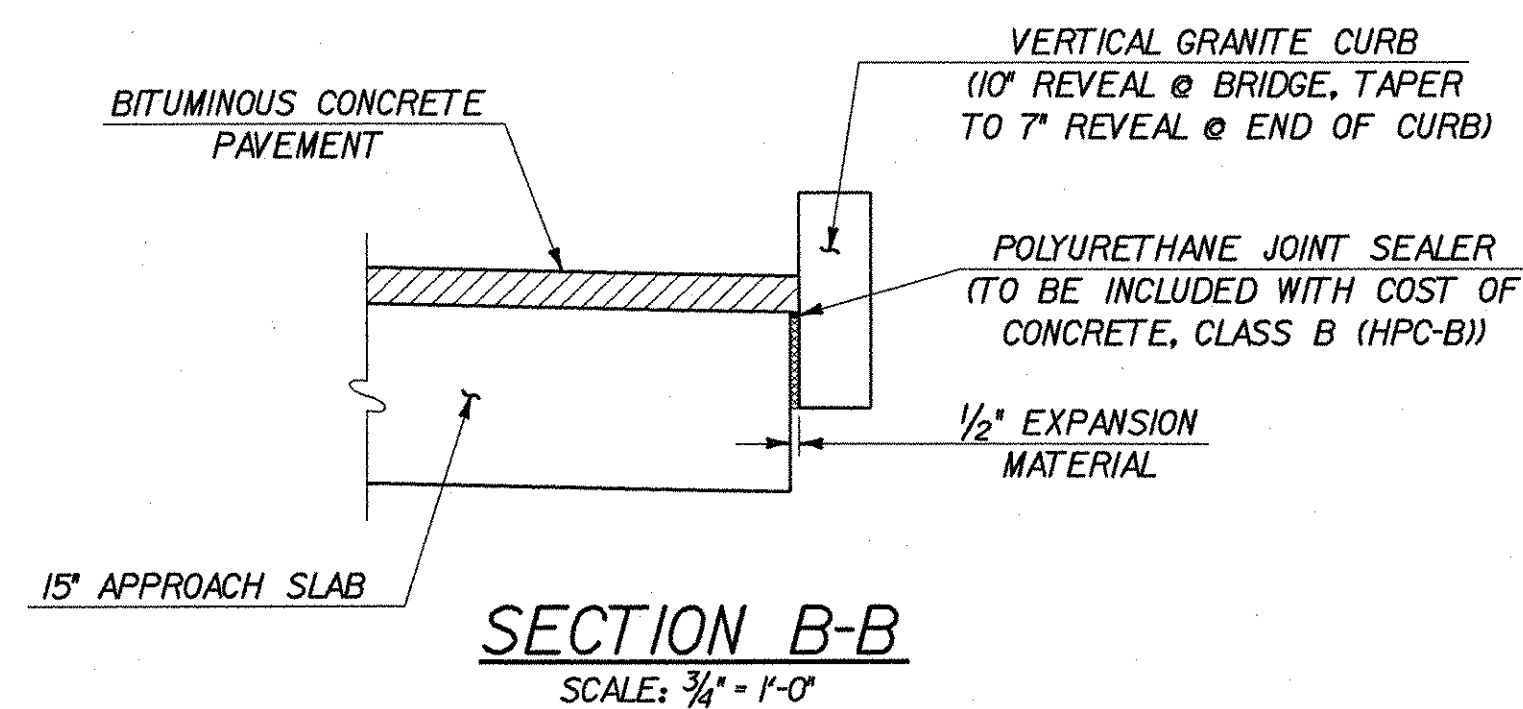


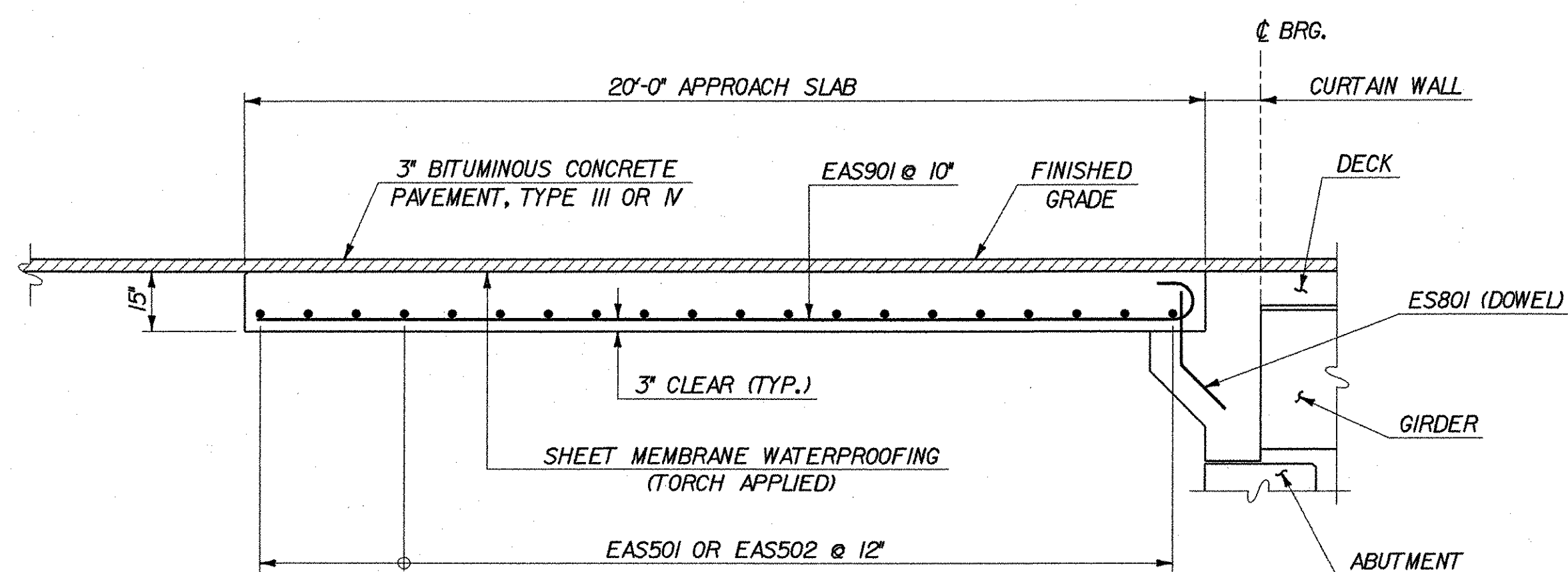
**APPROACH SLAB NO. 1 PLAN**  
SCALE: 3/16" = 1'-0"



**APPROACH SLAB NO. 2 PLAN**  
SCALE: 3/16" = 1'-0"

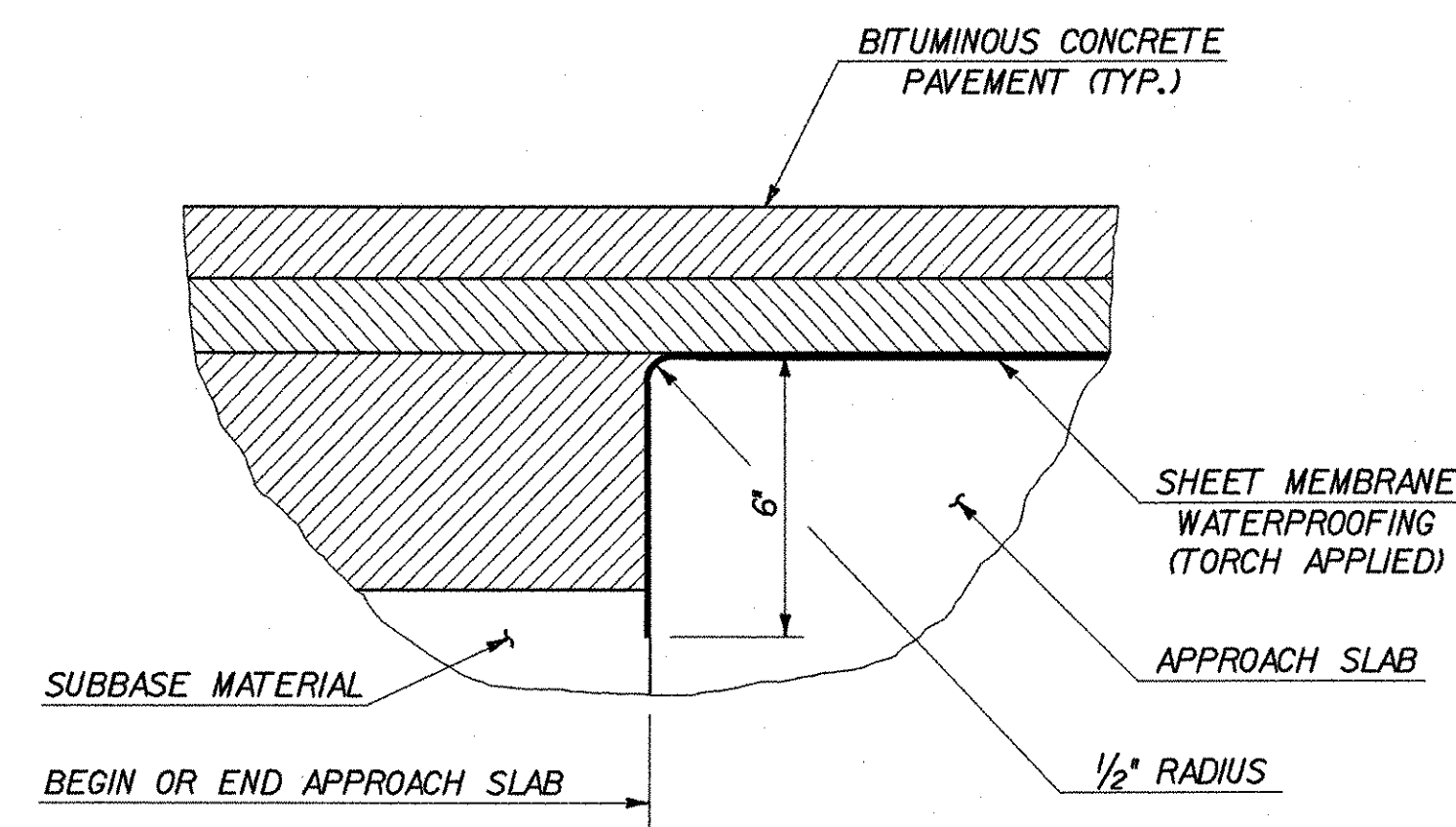


**SECTION B-B**  
SCALE: 3/4" = 1'-0"



**SECTION A-A**  
SCALE: 3/8" = 1'-0"

NOTE: DECK JOINT NOT SHOWN FOR CLARITY



**SHEET MEMBRANE DETAIL**  
SCALE: 3" = 1'-0"

**NOTES**

1. ACUTE ANGLES IN APPROACH SLABS SHALL BE CLIPPED 6" X 6".

**STATE OF VERMONT  
AGENCY OF TRANSPORTATION**

Town Of	SHELBURNE	Bridge No.	15
Highway No.	TH 3	Log Sta.	
		Surv. Sta.	
<b>BOSTWICK ROAD OVER VERMONT RAILWAY APPROACH SLABS</b>			
Designed By	L. WIXSON	Drawn By	S. MERKMAN
Checked By	R. JOY	Date	05/03
		Bridge Design Supervisor	M. ZYDEL
		Date	05/03
PROJECT	SHELBURNE	PROJECT NO.	BRO 1445(30)
I.C.C. Info. M:\595402 Bostwick\BRIDGE\6m\ar\z\196asd.dgn			
Bridge Sheet No.	BR111	Sheet	51 of 73



PLOTTED 01-AUG-2003