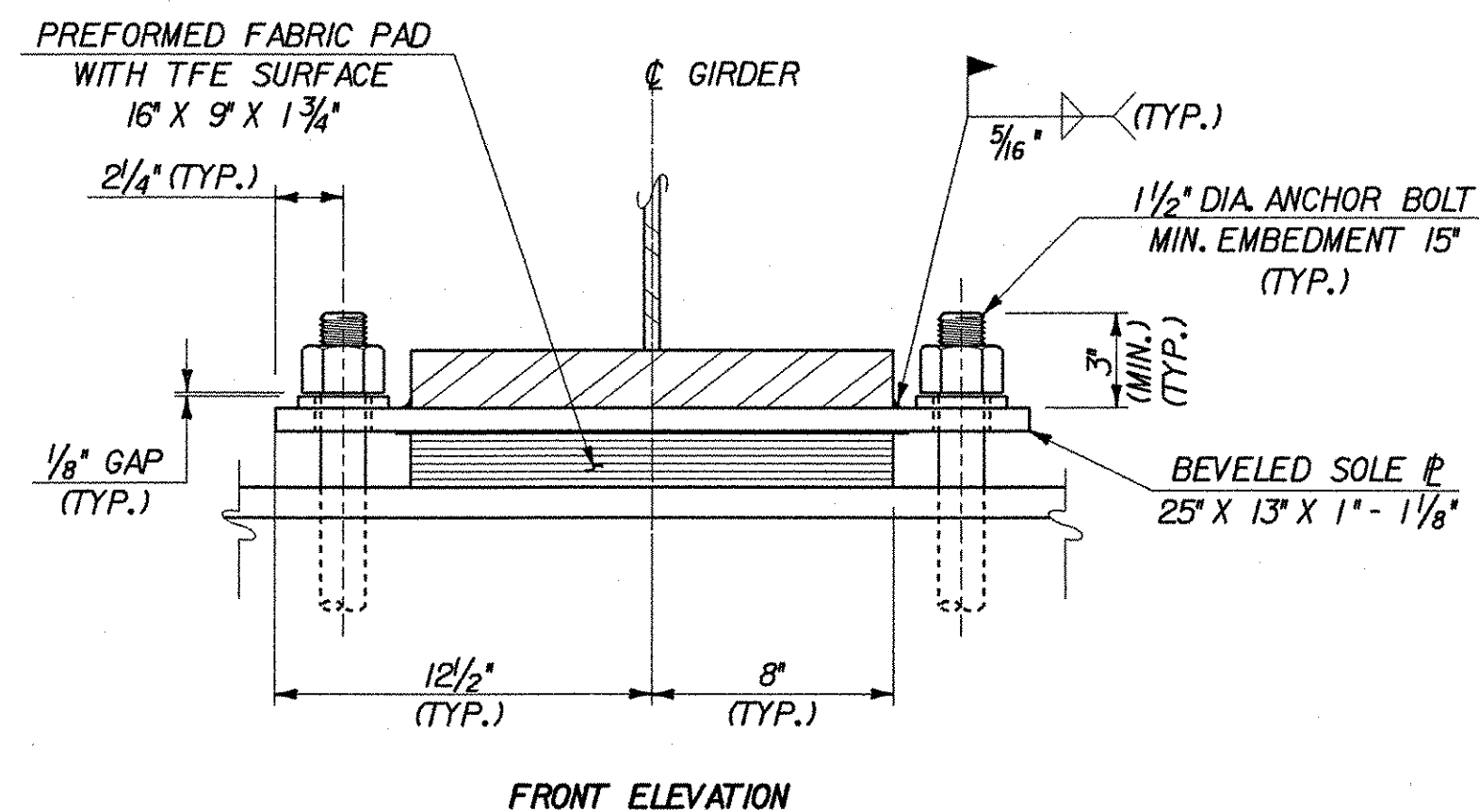
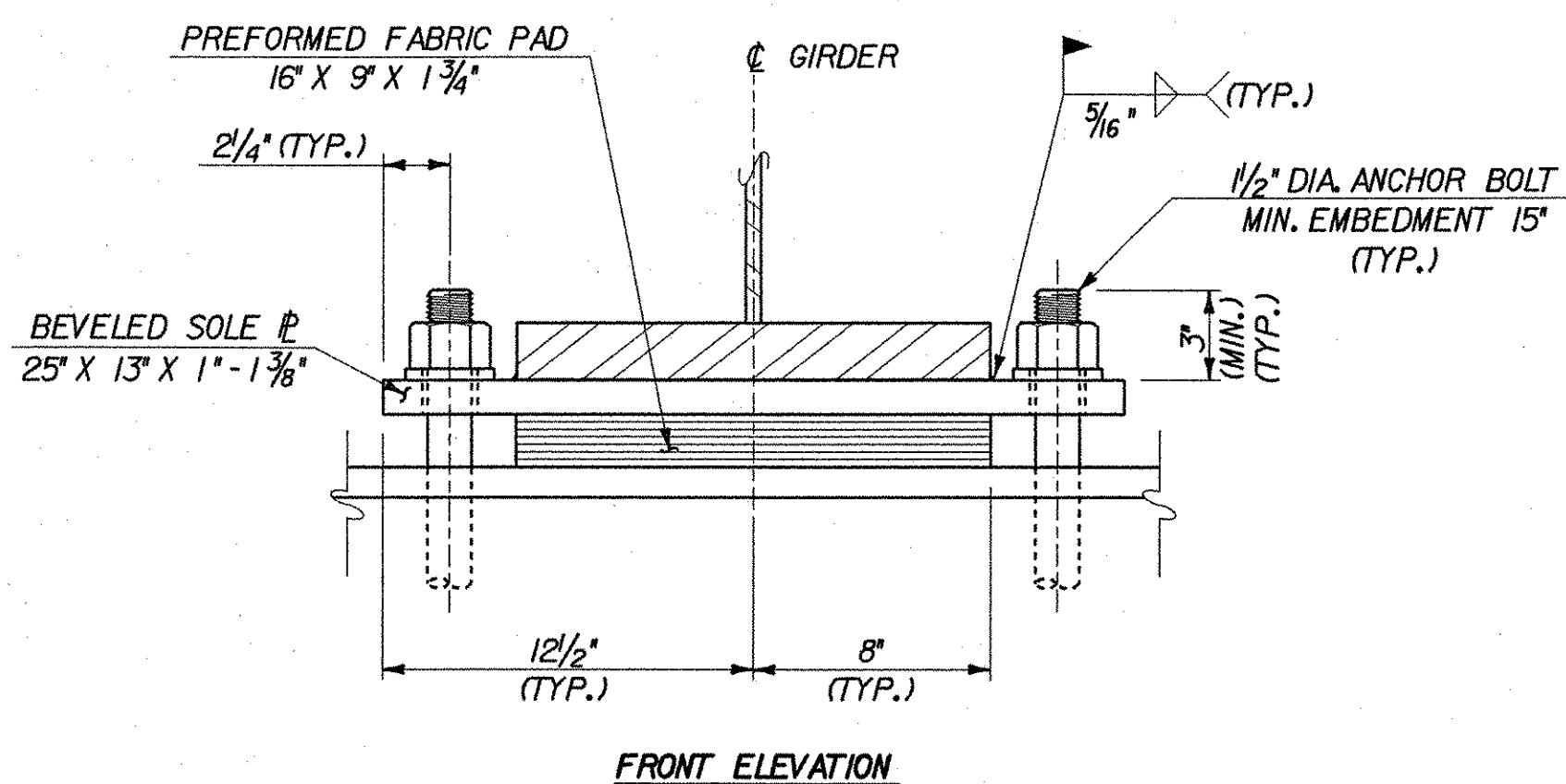
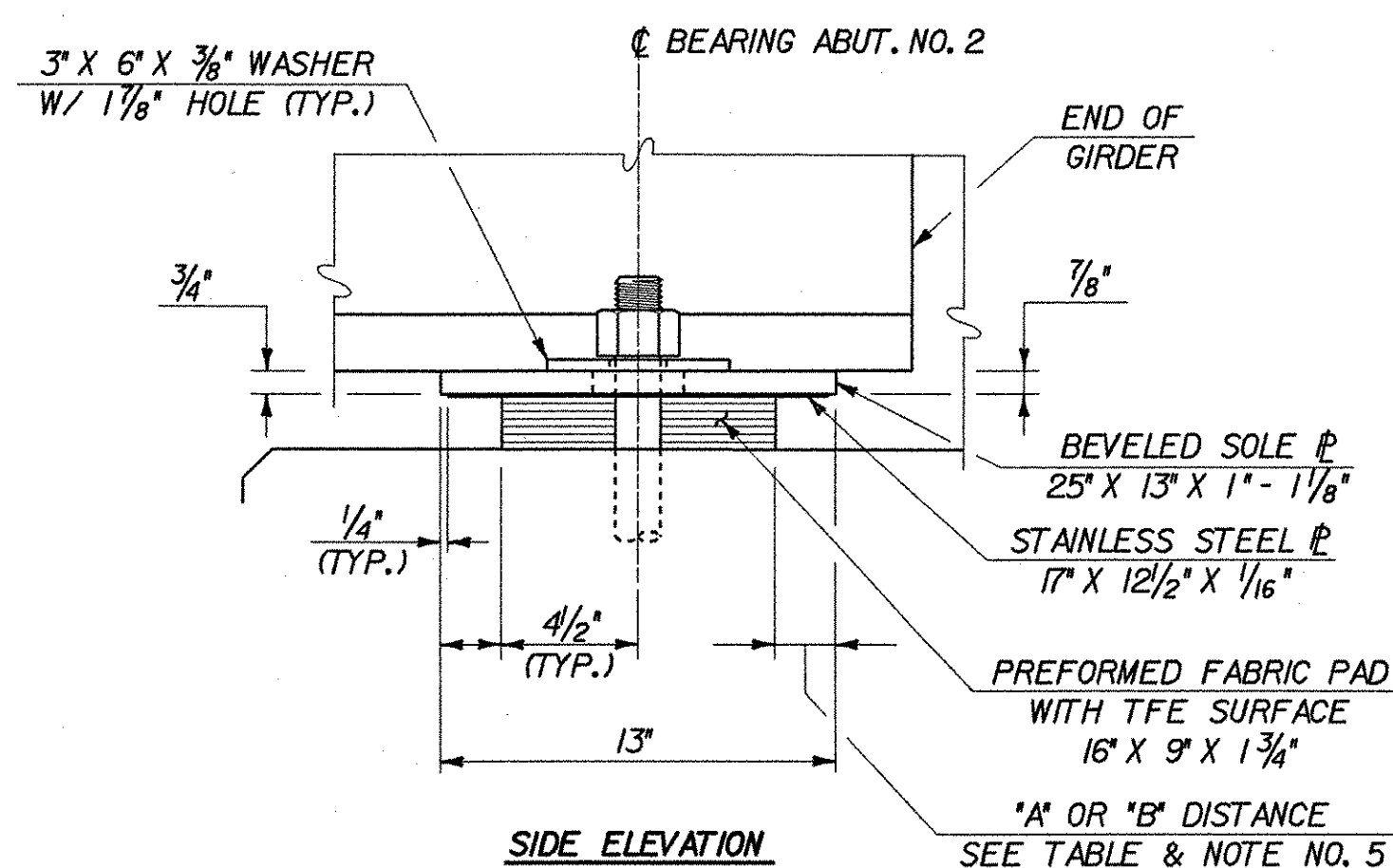
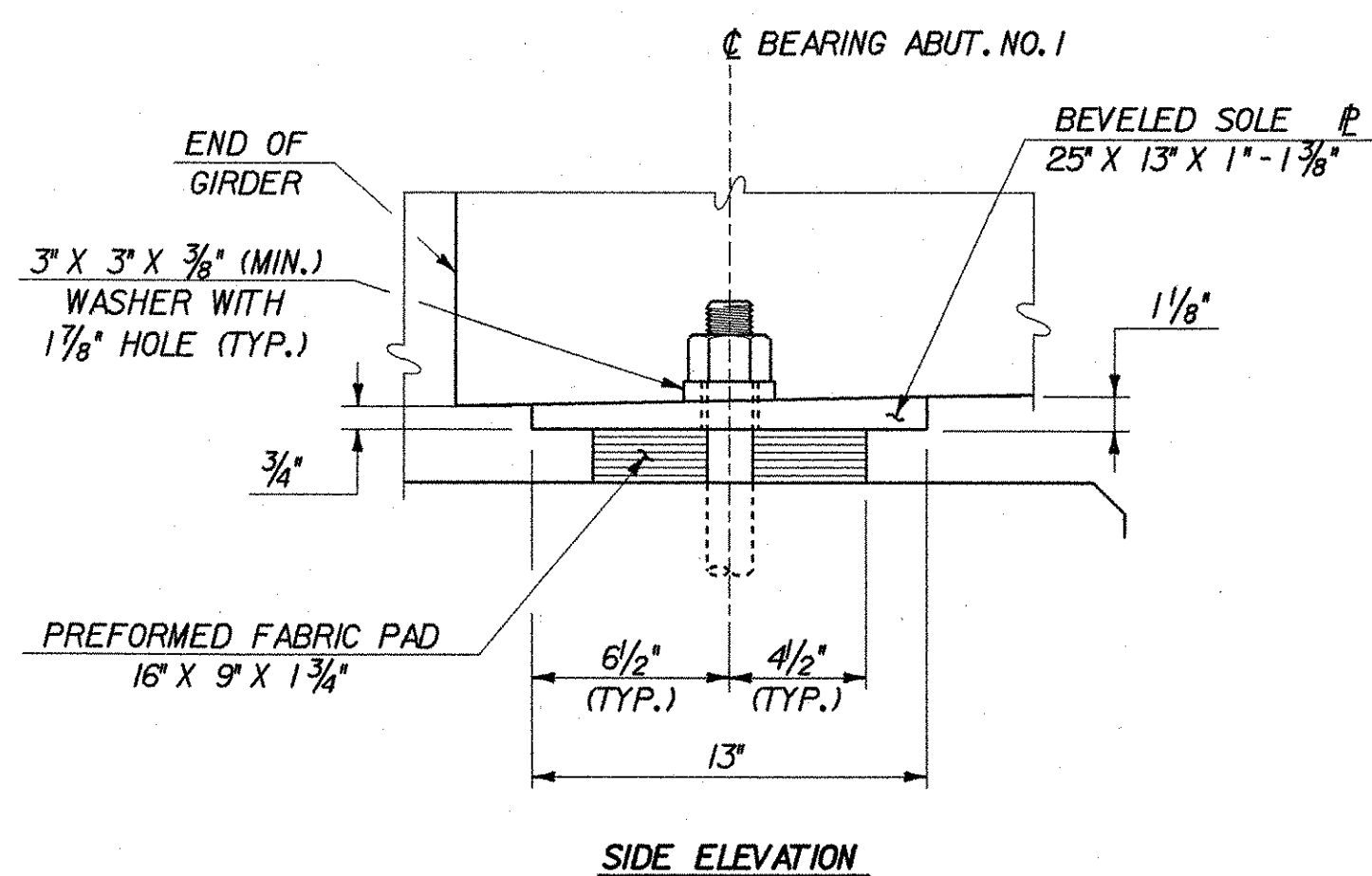


NOTE: FOR CURTAIN WALL BOXOUT DETAILS, SEE BRIDGE SHEET BR107.



FIXED BEARING @ ABUTMENT NO. 1
SCALE: 2" = 1'-0"

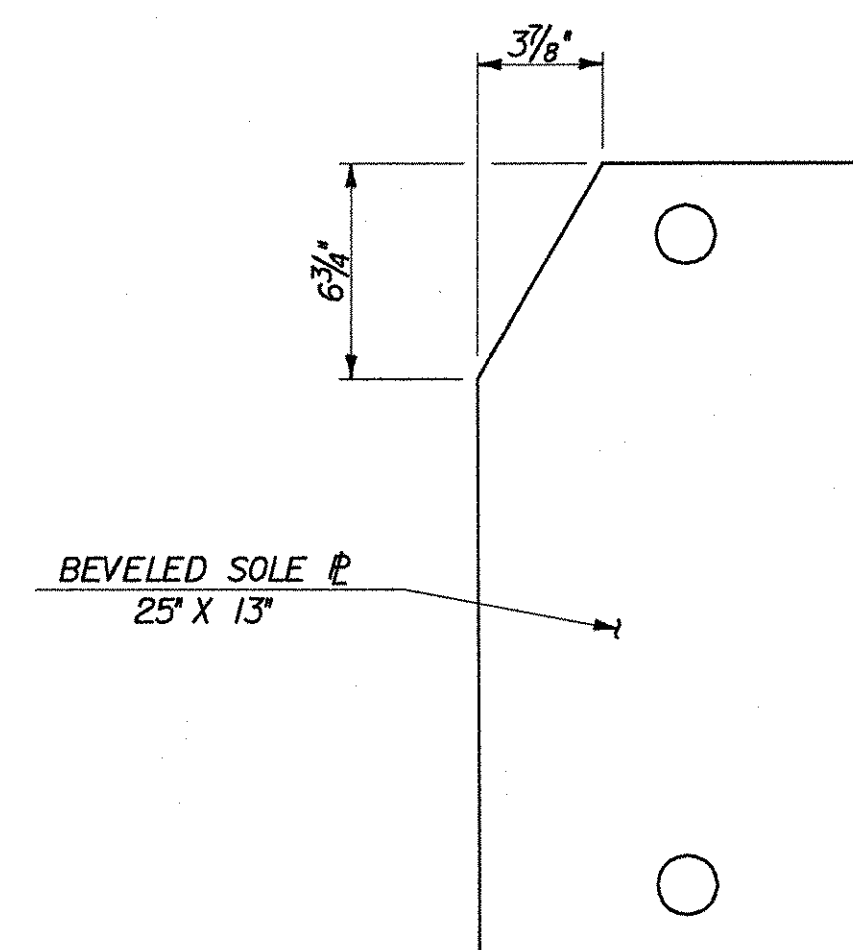
EXPANSION BEARING @ ABUTMENT NO. 2
SCALE: 2" = 1'-0"

BEARING NOTES

1. BEARINGS SHALL CONFORM TO APPLICABLE SUBSECTIONS OF SECTION 531 & 731.
2. BEARINGS SHALL BE PAID FOR UNDER ITEM 531.10 'BEARING DEVICE ASSEMBLY'.
3. SHOP DRAWINGS CONFORMING TO SUBSECTION 531.03 SHALL BE SUBMITTED TO INCLUDE WELDING AND BONDING PROCEDURES.
4. THE CONCRETE SURFACE UNDER THE BEARING DEVICE SHALL BE LEVEL.
5. *A* DISTANCE IS THE FINAL SETTING FOR THE BEARING PAD AFTER ALL DEAD LOAD HAS BEEN APPLIED. THE FINAL *A* DISTANCE, AS SHOWN IN THE TABLE, MUST BE ATTAINED WITHIN 1/8 INCH. *B* DISTANCE IS FOR SETTING THE BEARING AFTER THE STRUCTURAL STEEL IS ERECTED AND BEFORE THE CONCRETE DECK IS POURED.
6. DESIGN CRITERIA:
 A. BASE PLATE TO CONCRETE DESIGN PRESSURE = 1000 PSI MAXIMUM.
 B. MINIMUM DESIGN ROTATION = 0.015 RADIAN.
 C. HORIZONTAL CAPACITY SHALL BE A MINIMUM OF 6% VERTICAL LOAD.
 D. DESIGN LOAD PER BEARING @ ABUTMENTS NO. 1 & 2 (UNFACTORED).
 $R_{DL+SD} = 57$ KIPS
 $R_{LL+I} = 73$ KIPS
7. ALL STEEL IN BEARING DEVICES (EXCEPT STAINLESS STEEL) SHALL BE AASHTO M-270, GRADE 36.
8. ANCHOR BOLTS SHALL BE SWEDGED AND GALVANIZED WITH 4 OF THREAD. EXPANSION BEARING NUTS ARE TO BE DRAWN UP FINGER TIGHT AND THEN BACKED OFF 1/8 INCH. THREADS SHALL BE BURRED TO PREVENT NUT REMOVAL. ANCHOR BOLTS SHALL HAVE A MINIMUM OF 15" EMBEDMENT INTO THE CONCRETE. ANCHOR BOLTS, NUTS AND WASHERS SHALL MEET THE REQUIREMENTS OF SECTION 714.08.
9. ALL BEARING DEVICES SHALL BE GALVANIZED OR METALLIZED. AREAS OF GALVANIZING OR METALLIZING DAMAGED BY THE FIELD WELDS OR HANDLING SHALL BE REPAIRED PER SECTION 513 OF THE SUPPLEMENTAL SPECIFICATIONS.
10. ALL HORIZONTAL DIMENSIONS SHOWN @ 45° ARE FINAL CONDITION DIMENSIONS.
11. FOR TOP & BOTTOM FLANGE CLIP DETAIL, SEE BRIDGE SHEET BR109.

TEMPERATURE SETTING TABLE

ABUTMENT NO. 2		
TEMP	*A* DIST	*B* DIST
0° F	2 5/16"	1 13/16"
15° F	2 3/16"	1 11/16"
30° F	2 1/8"	1 7/8"
45° F	2"	1 1/2"
60° F	1 7/8"	1 3/8"
75° F	1 13/16"	1 5/16"
90° F	1 11/16"	1 3/16"
105° F	1 9/16"	1 1/16"



SOLE PLATE CLIP DETAIL

SCALE: 2" = 1'-0"

NOTE: FIXED BEARING SHOWN. EXPANSION BEARING SIMILAR.

STATE OF VERMONT AGENCY OF TRANSPORTATION

Town Of	SHELBURNE	Bridge No.	15
Highway No.	TH 3	Log Sta.	
		Surv. Sta.	
BOSTWICK ROAD OVER VERMONT RAILWAY			
BEARING DETAILS			
Designed By	L. WIXSON	Drawn By	S. MERKMAN
Checked By	R. JOY	Date	05/03
		Bridge Design Supervisor	M. ZYDEL
		Date	05/03
PROJECT	SHELBURNE	PROJECT NO.	BRO 1445(30)
I.C.C. Info. M:\595402_Bostwick\BRIDGE\6m\ar\z\196brgdgn			
Bridge Sheet No. BR110		Sheet 50 of 73	

