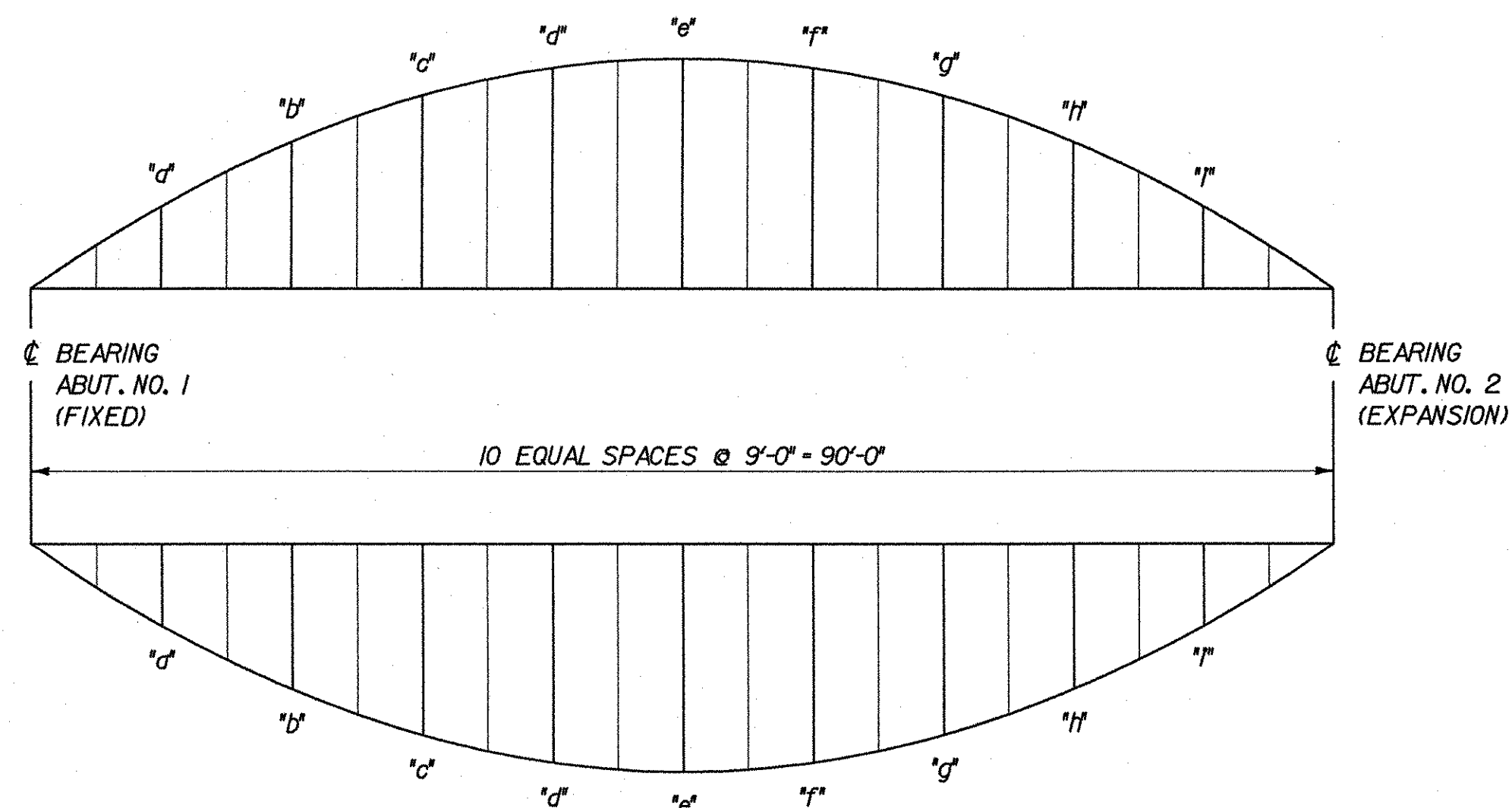


GIRDER ELEVATION
NOT TO SCALE



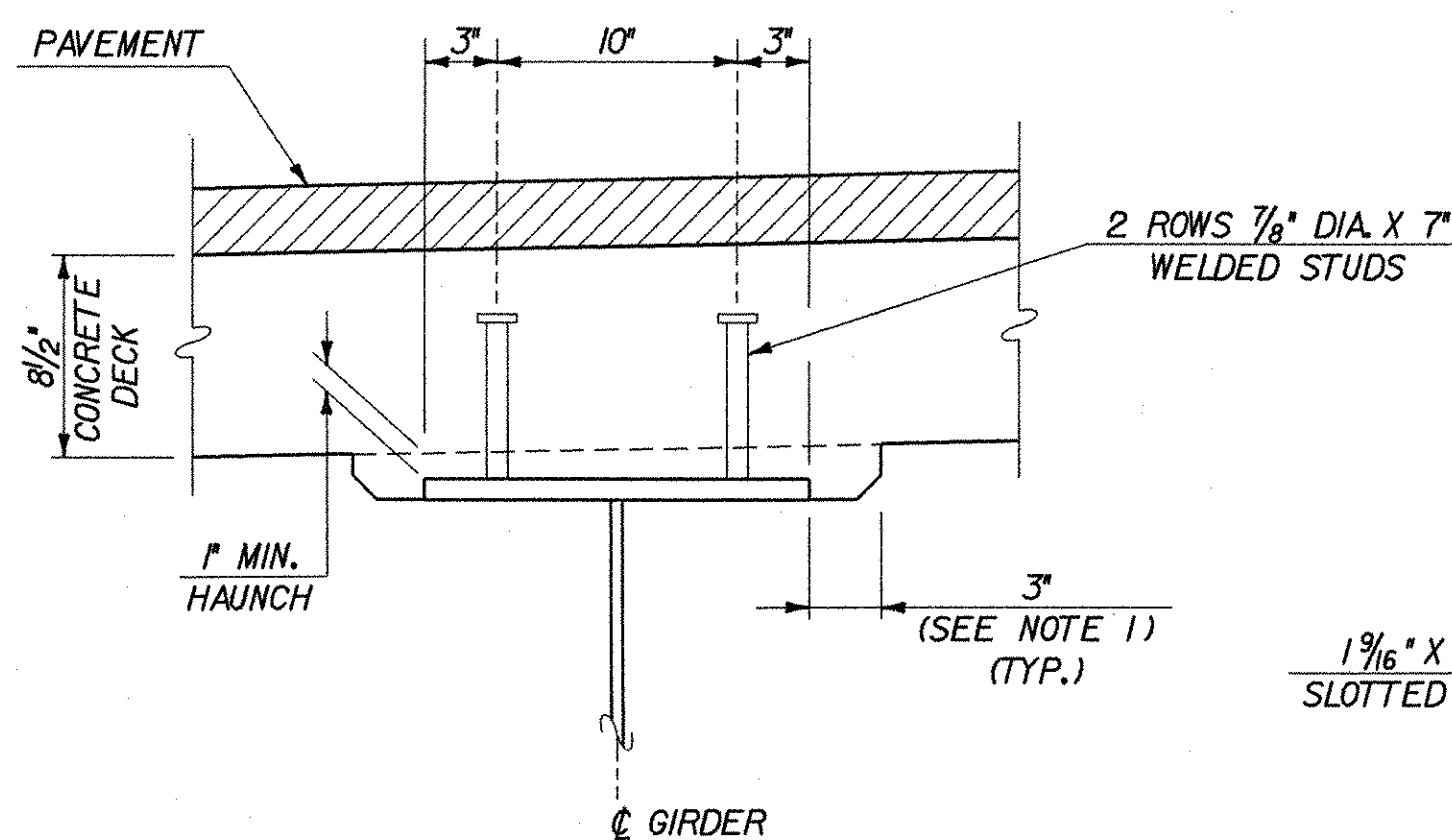
DL DEFLECTION AND CAMBER DIAGRAM
NOT TO SCALE

CAMBER AND DEFLECTION MEASUREMENTS
ARE GIVEN IN INCHES AT TENTH POINTS

CAMBER AND DL DEFLECTION ORDINATE SCHEDULE

L = TOTAL LENGTH ϕ BRG. ABUT. NO. 1 TO ϕ BRG. ABUT. NO. 2 = 90'-0"

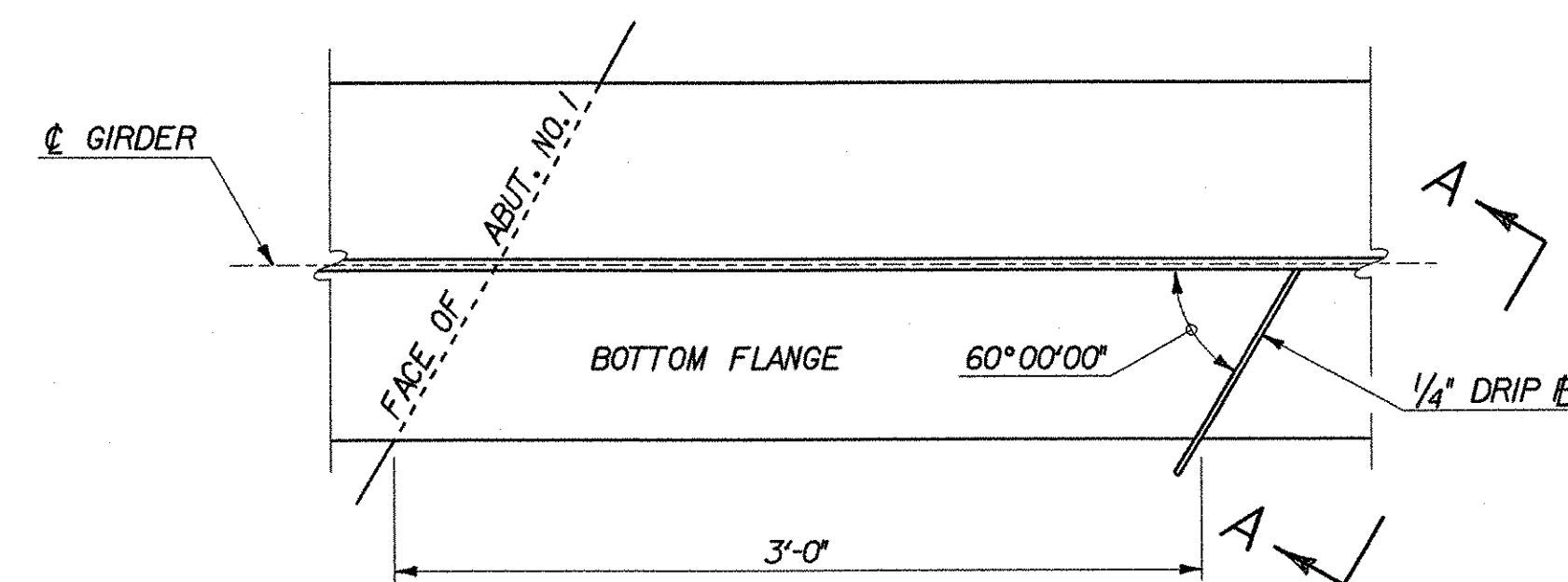
GIRDER NO.	ϕ BRG. ABUT. NO. 1	0.10L	0.20L	0.30L	0.40L	0.50L	0.60L	0.70L	0.80L	0.90L	ϕ BRG. ABUT. NO. 2	
1 THRU 5	CAMBER	0"	2 7/8"	4 7/16"	6"	6 15/16"	7 1/4"	6 15/16"	6"	4 7/16"	2 7/8"	0"
1 THRU 5	DL DEFLECTION	0"	1 1/2"	2 7/8"	3 7/8"	4 9/16"	4 3/4"	4 9/16"	3 7/8"	2 7/8"	1 1/2"	0"



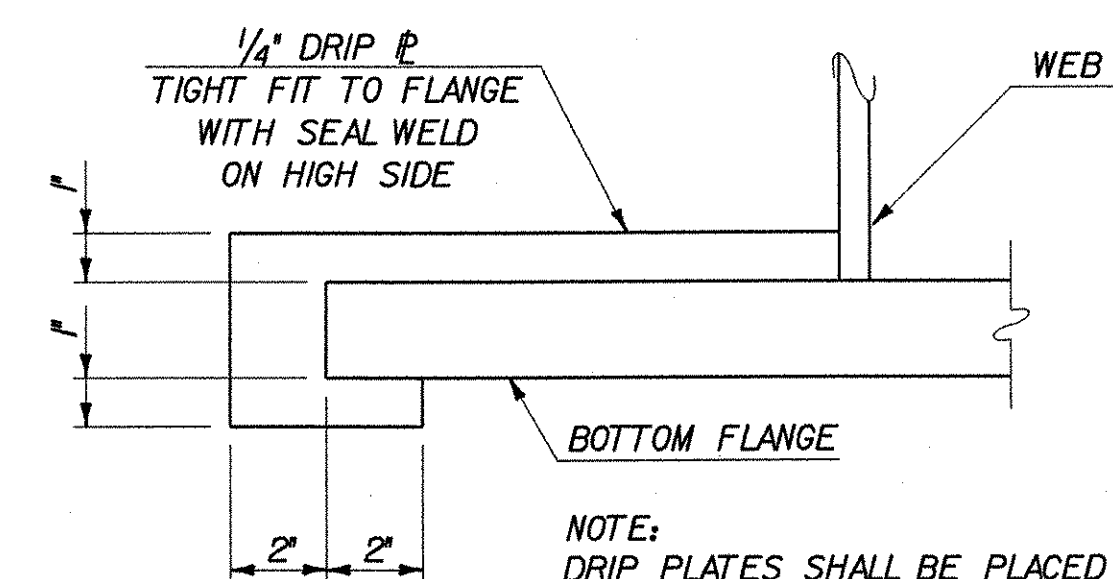
HAUNCH AND SHEAR CONNECTOR DETAIL
SCALE: 1/2" = 1'-0"

NOTES

1. THE 3" HORIZONTAL SECTION MAY BE ELIMINATED FOR FORMING SYSTEMS DESIGNED FOR THE CONSTRUCTION OF VERTICAL HAUNCHES. SYSTEMS SHALL BE SUBMITTED FOR APPROVAL TO THE STRUCTURES ENGINEER. ALL VOIDS SHALL BE FILLED WITH MORTAR, TYPE N OR AN EQUIVALENT PRODUCT FROM THE APPROVED PRODUCTS LIST.

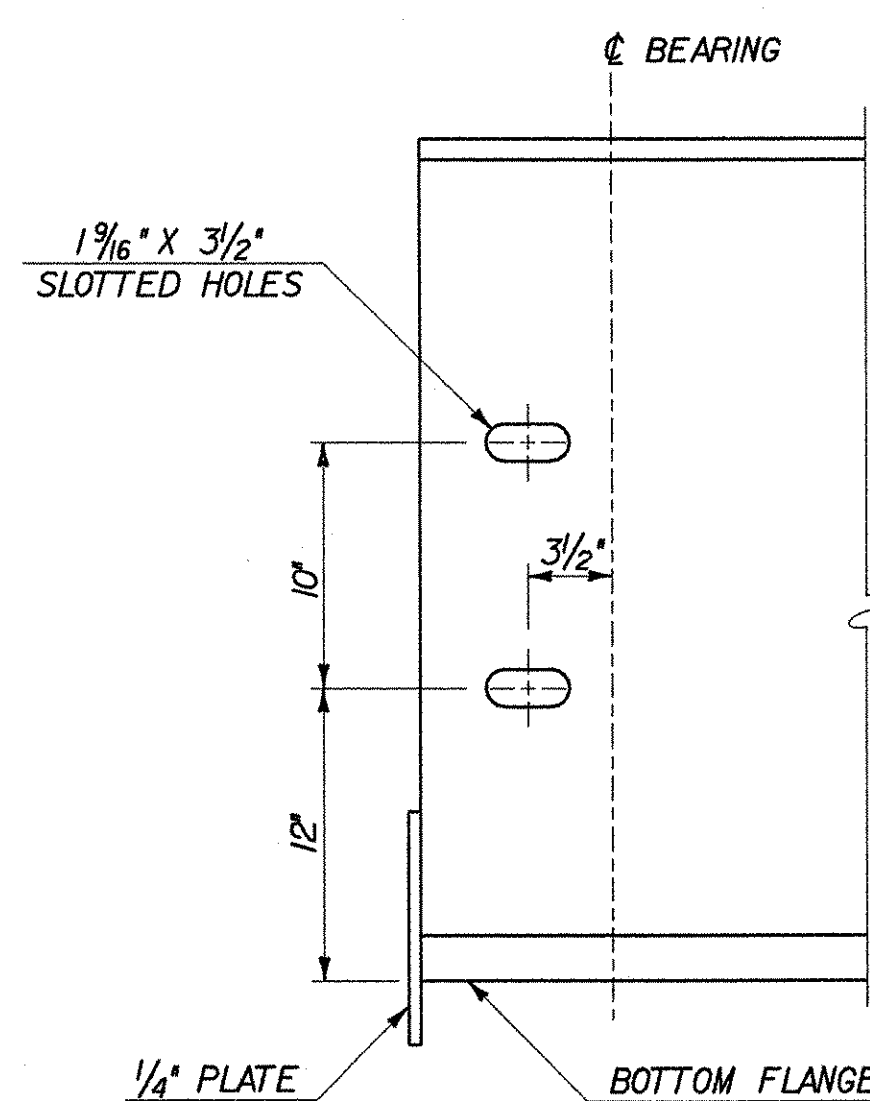


DRIP PLATE PLAN
SCALE: 1/2" = 1'-0"

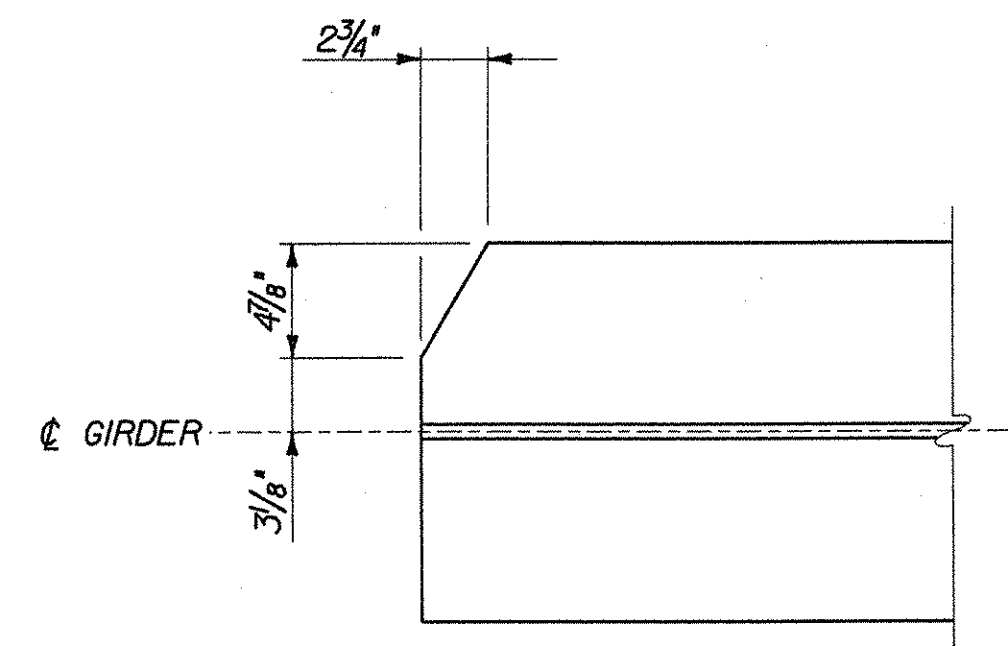


DRIP PLATE SECTION A-A
SCALE: 3" = 1'-0"

NOTE:
DRIP PLATES SHALL BE PLACED ON THE OUTSIDE EDGE OF FASCIA GIRDERS ON THE ABUTMENT NO. 1 END. SEE FRAMING PLAN FOR LOCATION, BRIDGE SHEET BR108.



DETAIL A
SCALE: 1/2" = 1'-0"



TOP & BOTTOM FLANGE CLIP DETAIL
SCALE: 1/2" = 1'-0"

STATE OF VERMONT AGENCY OF TRANSPORTATION

Town Of	SHELBURNE	Bridge No.	15
Highway No.	TH 3	Log Sta.	
		Surv. Sta.	
BOSTWICK ROAD OVER VERMONT RAILWAY			
GIRDER DETAILS			
Designed By	L. WIXSON	Drawn By	S. MERKMAN
Checked By	R. JOY	Date	05/03
		Bridge Design Supervisor	M. ZYDEL
		Date	05/03
PROJECT	SHELBURNE	PROJECT NO.	BRO 1445(30)
I.G.C. Info. M:\535402_Bostwick\BRIDGE\6m\1d\2\196gdf.dgn			
Bridge Sheet No.	BR109	Sheet	49 of 73