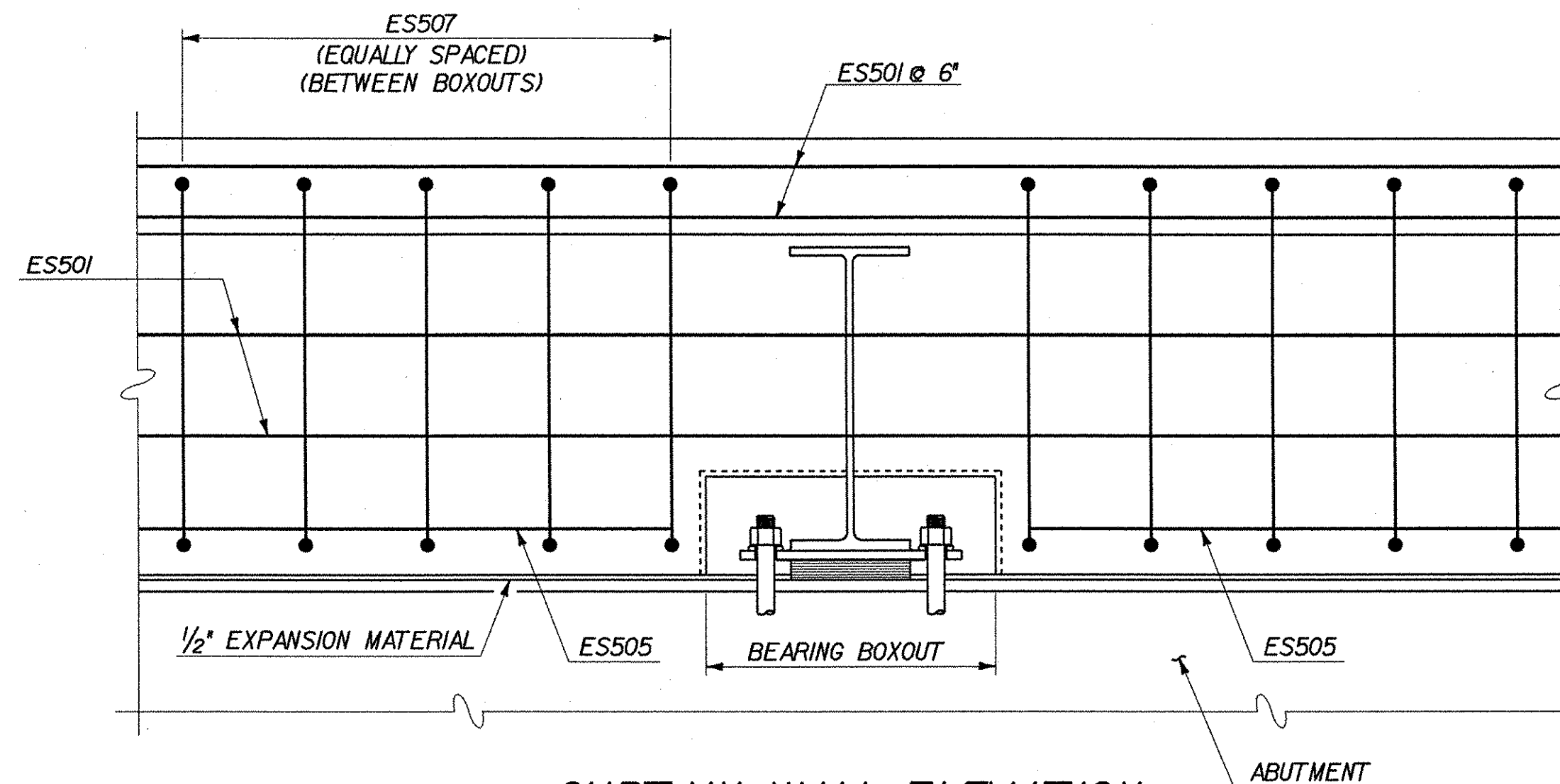
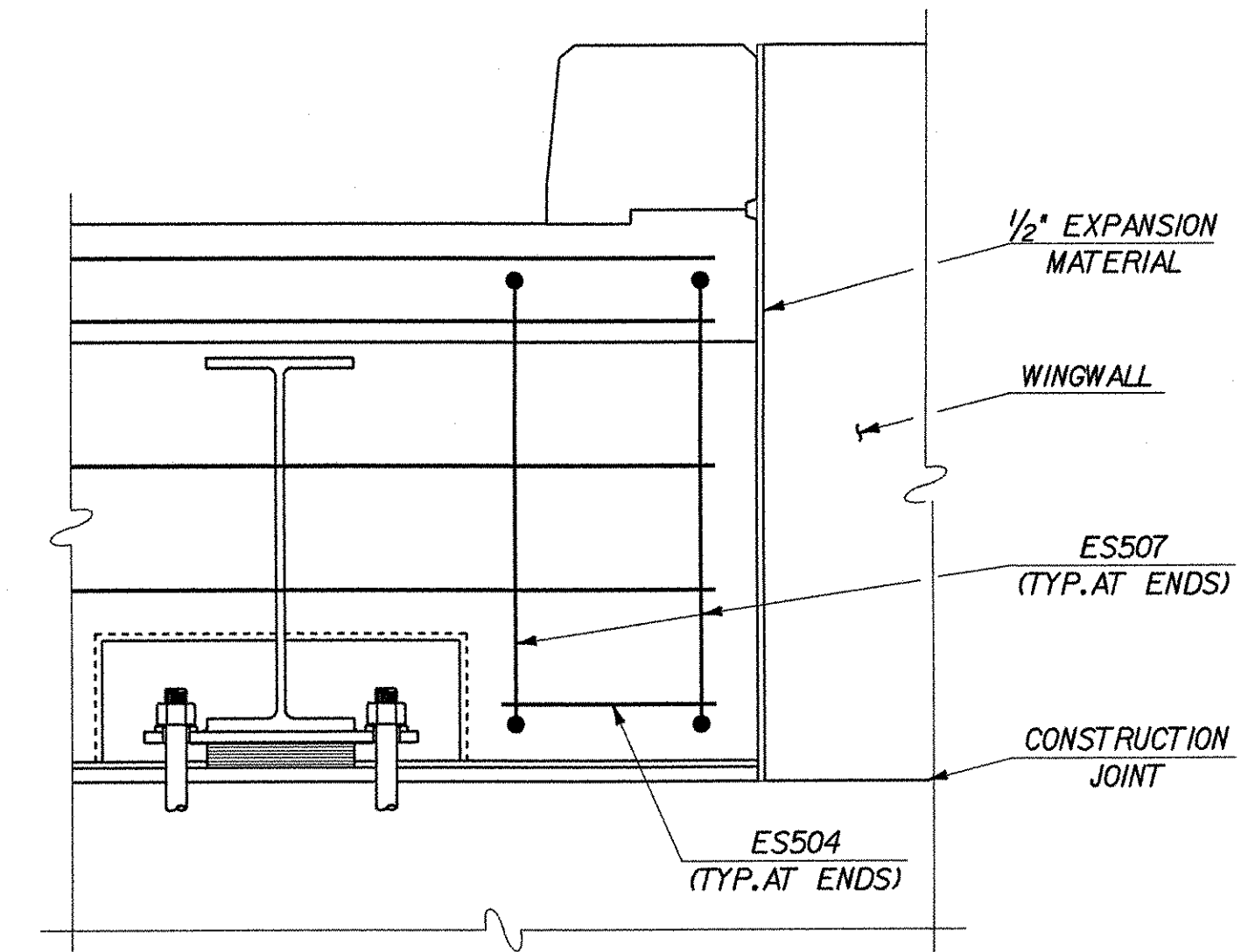


PLAN



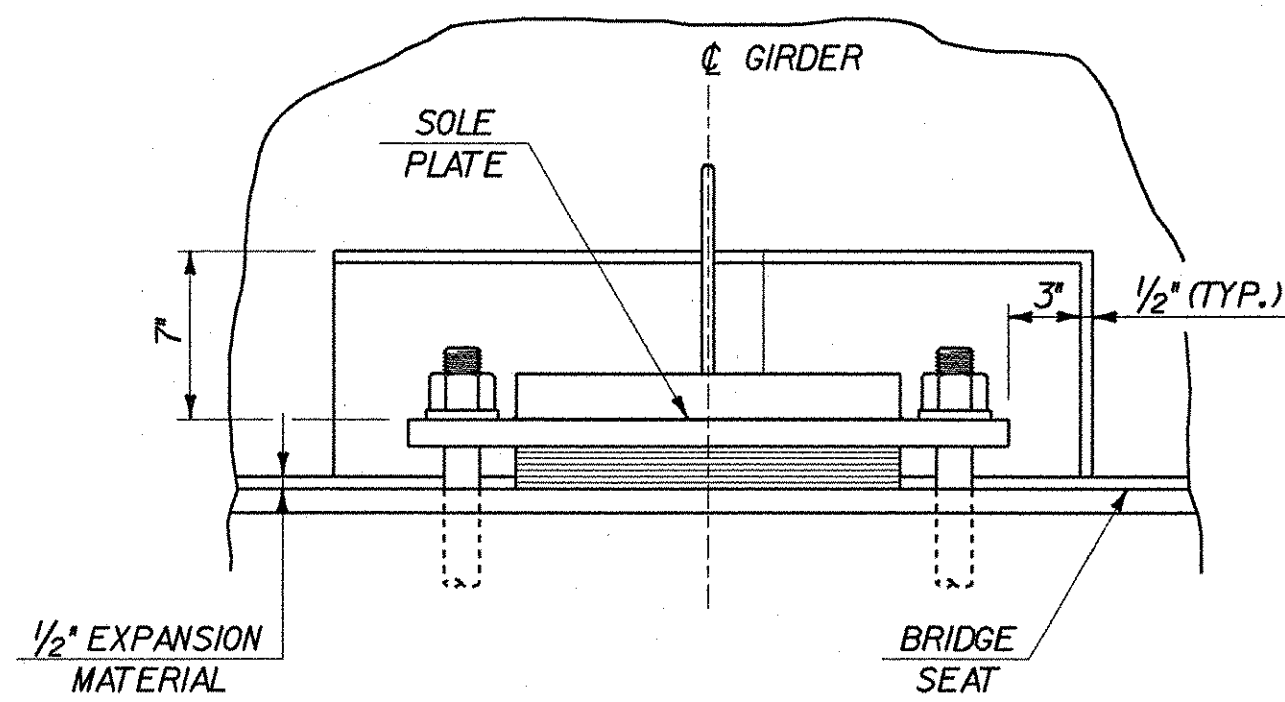
CURTAIN WALL ELEVATION

SCALE: 1" = 1'-0"

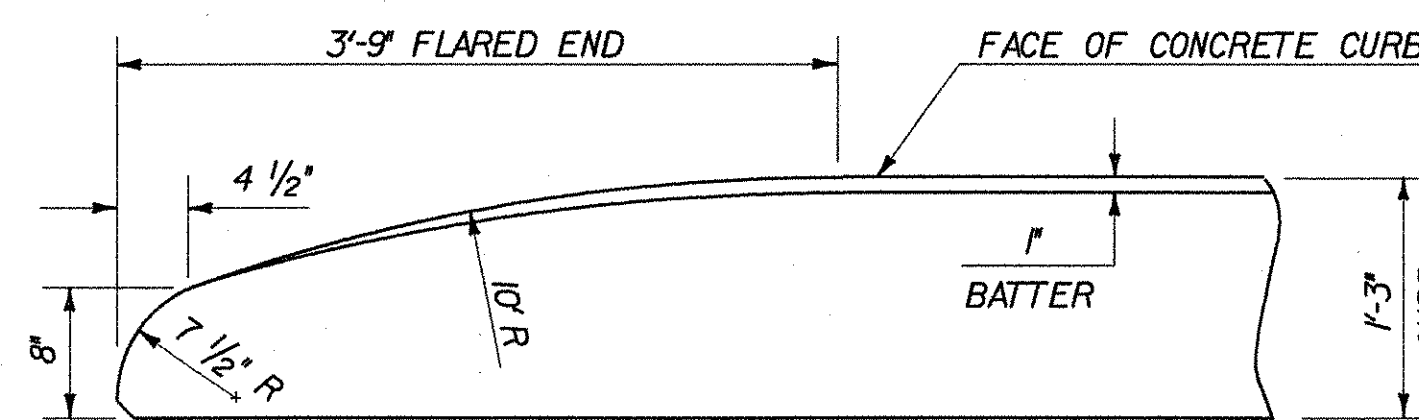


SECTION A-A

SCALE: 1" = 1'-0"



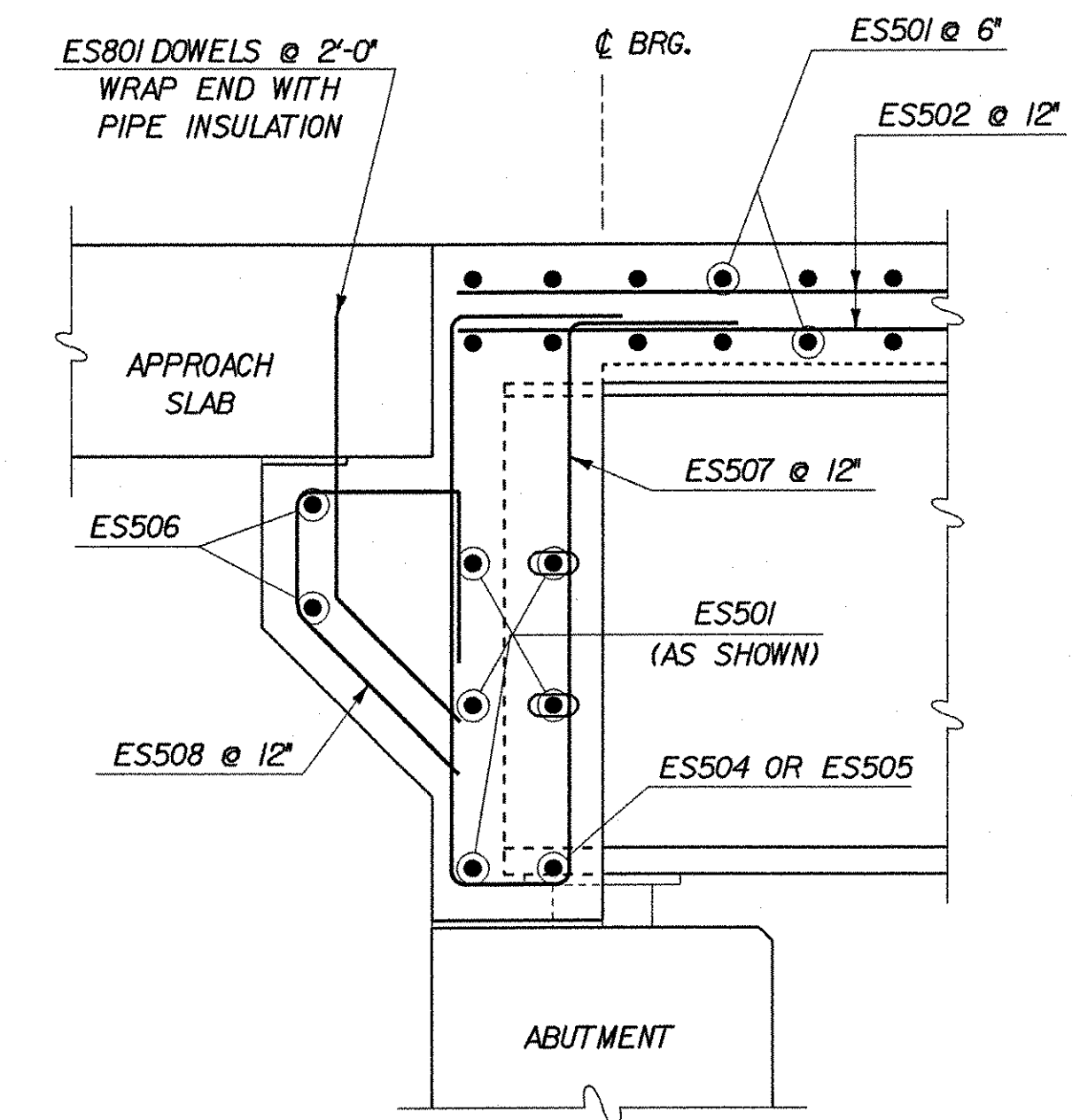
VIEW A-A



CURB REINFORCING STIRRUP BARS SHALL BE TURNED AS REQUIRED TO FIT FLARED ENDS.

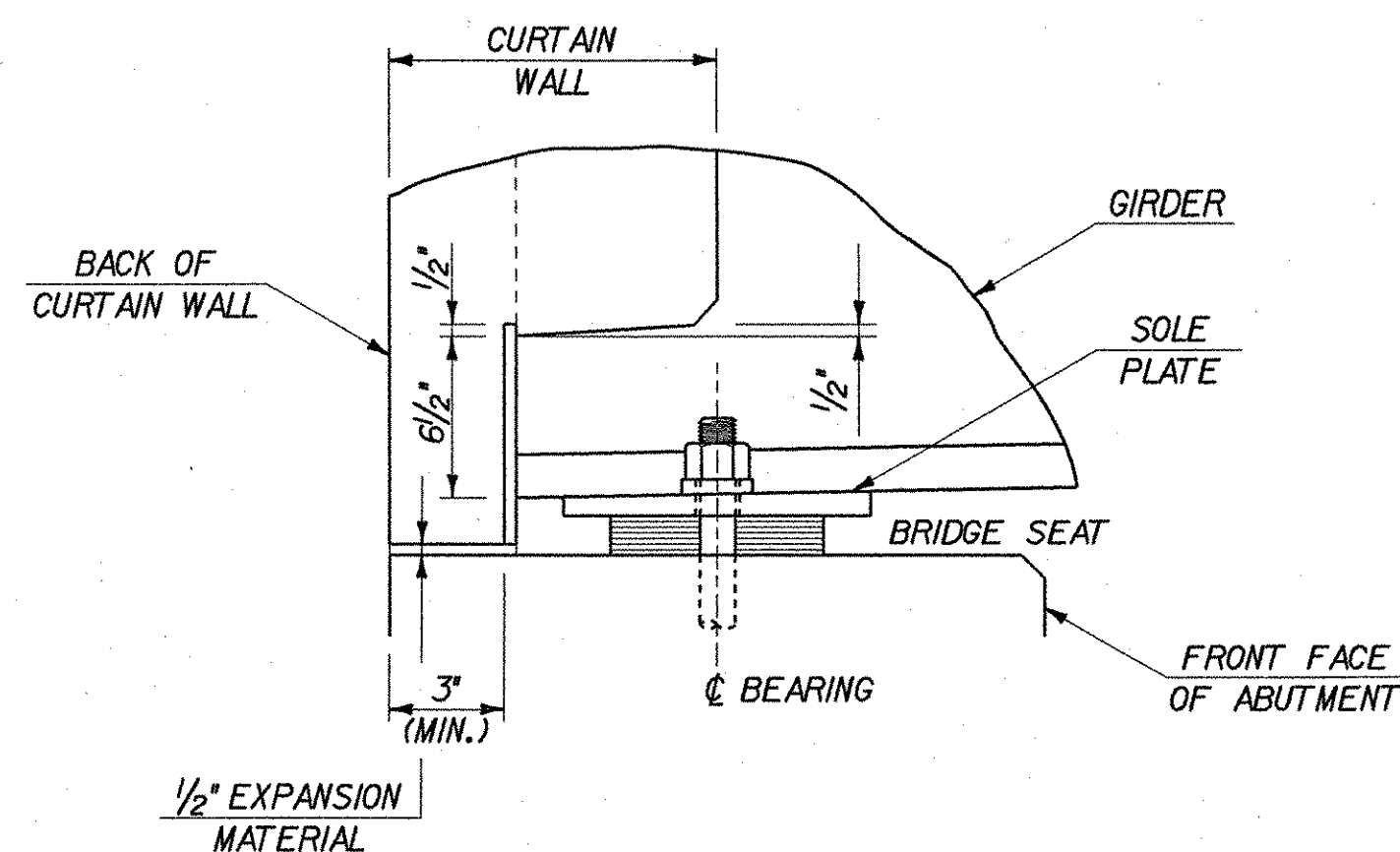
FLARED END DETAIL FOR 1'-3" CURB

NOT TO SCALE



SECTION A-A

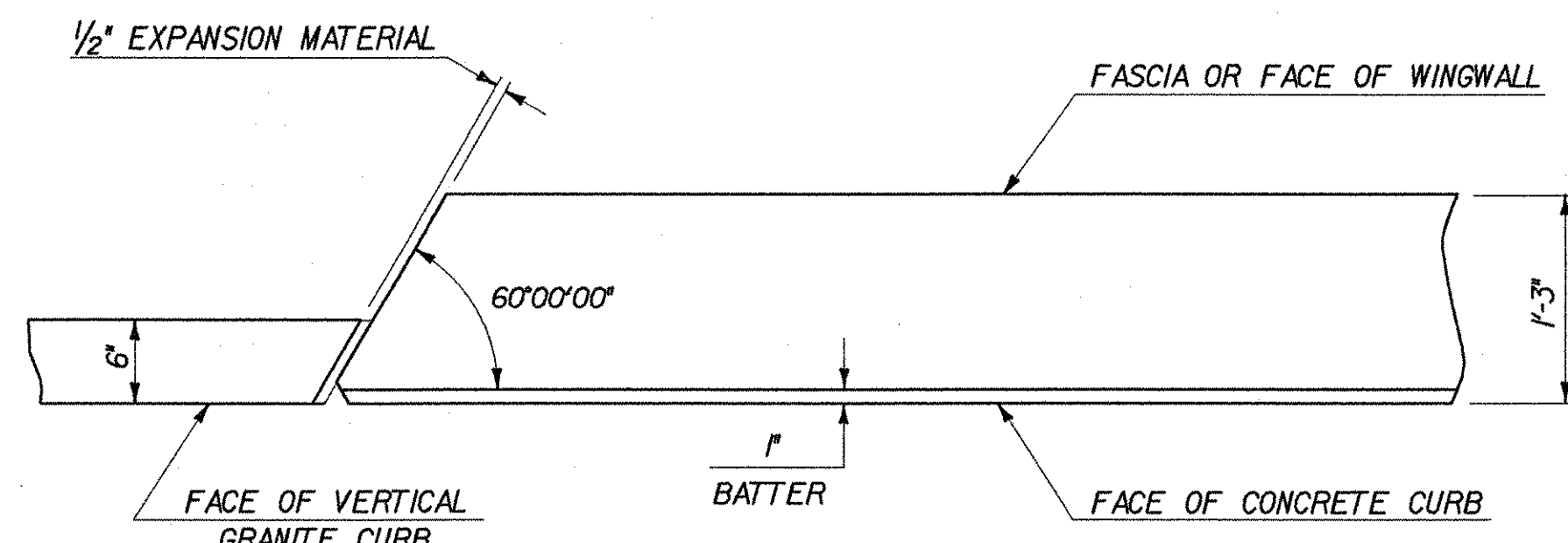
SCALE: 1" = 1'-0"



SECTION B-B

BEARING BOXOUT DETAILS

SCALE: 1/2" = 1'-0"



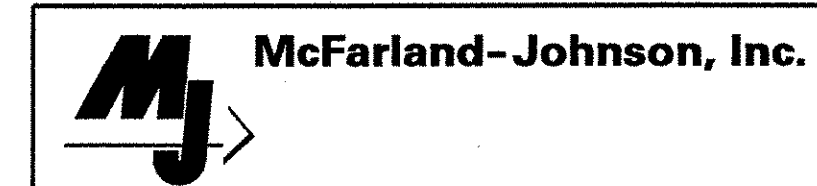
NOTE: TYPICAL AT WWI ONLY

END DETAIL FOR 1'-3" CURB

NOT TO SCALE

STATE OF VERMONT
AGENCY OF TRANSPORTATION

Town Of	SHELBURNE	Bridge No.	15
Highway No.	TH 3	Log Sta.	
		Surv. Sta.	
BOSTWICK ROAD OVER VERMONT RAILWAY			
DECK DETAILS (2 OF 2)			
Designed By	L. WIXSON	Drawn By	S. MERKMAN
Checked By	R. JOY	Date	05/03
		Bridge Design Supervisor	M. ZYDEL
		Date	05/03
PROJECT	SHELBURNE	PROJECT NO.	BRO 1445(30)
I.G.C. Info. MA\595402_Bostwick\BRIDGE\6m\ar\2\1196dt2.dgn			
Bridge Sheet No.	BR107	Sheet	47 of 73



PLOTTED 01-AUG-2003