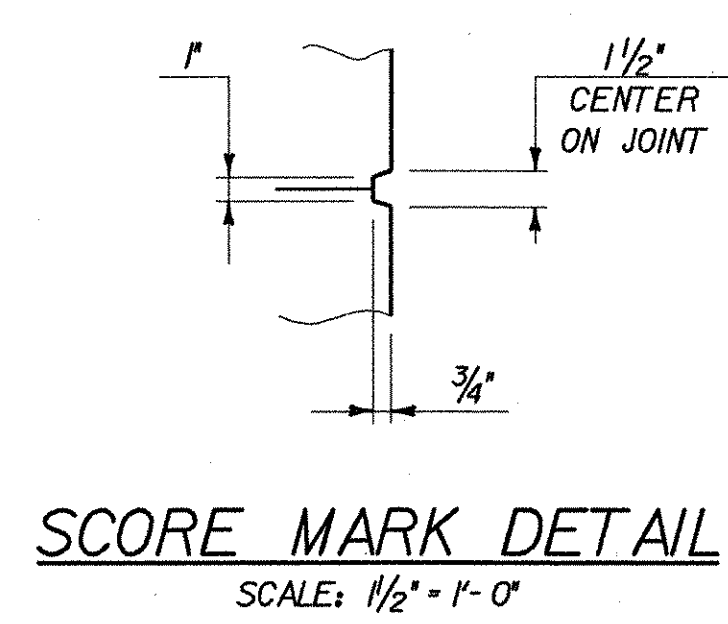
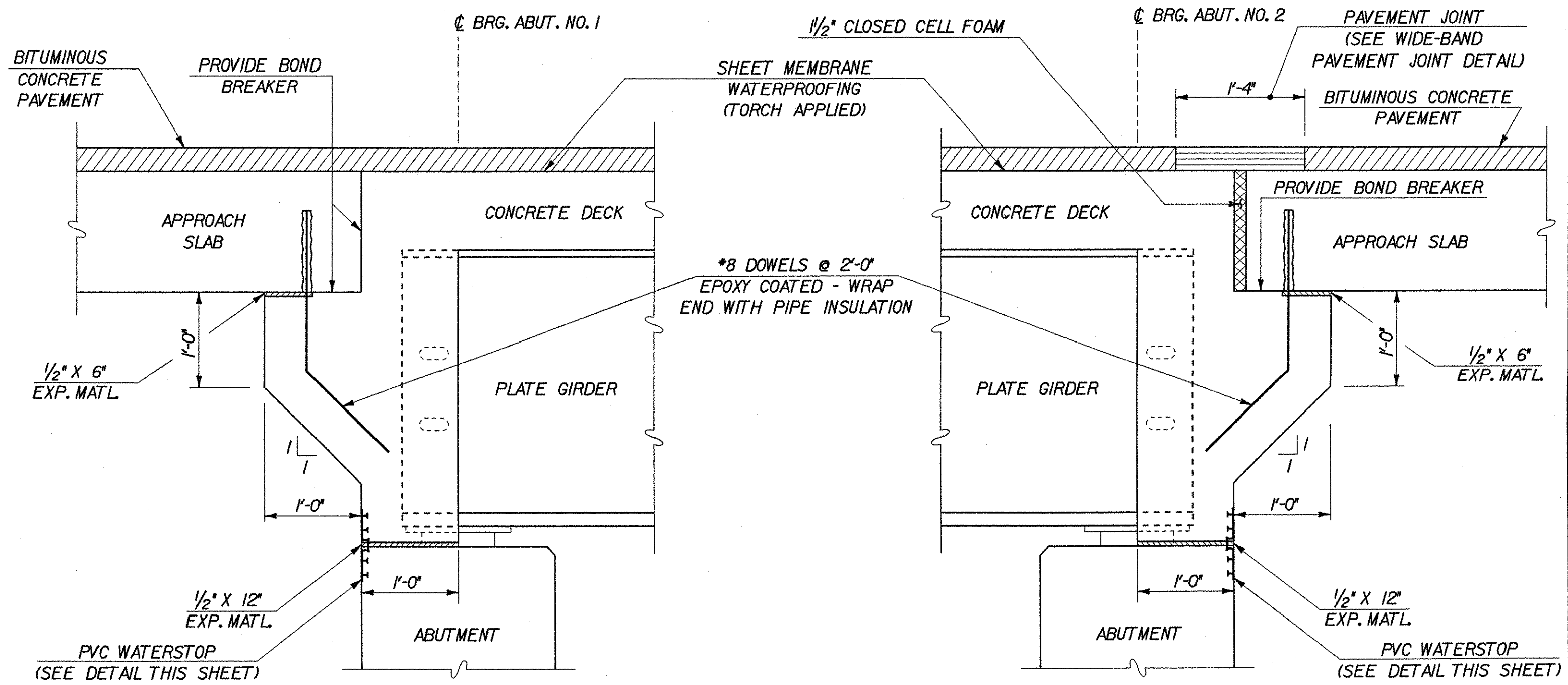


TYPICAL CURB DETAIL
SCALE: 3/4" = 1'-0"

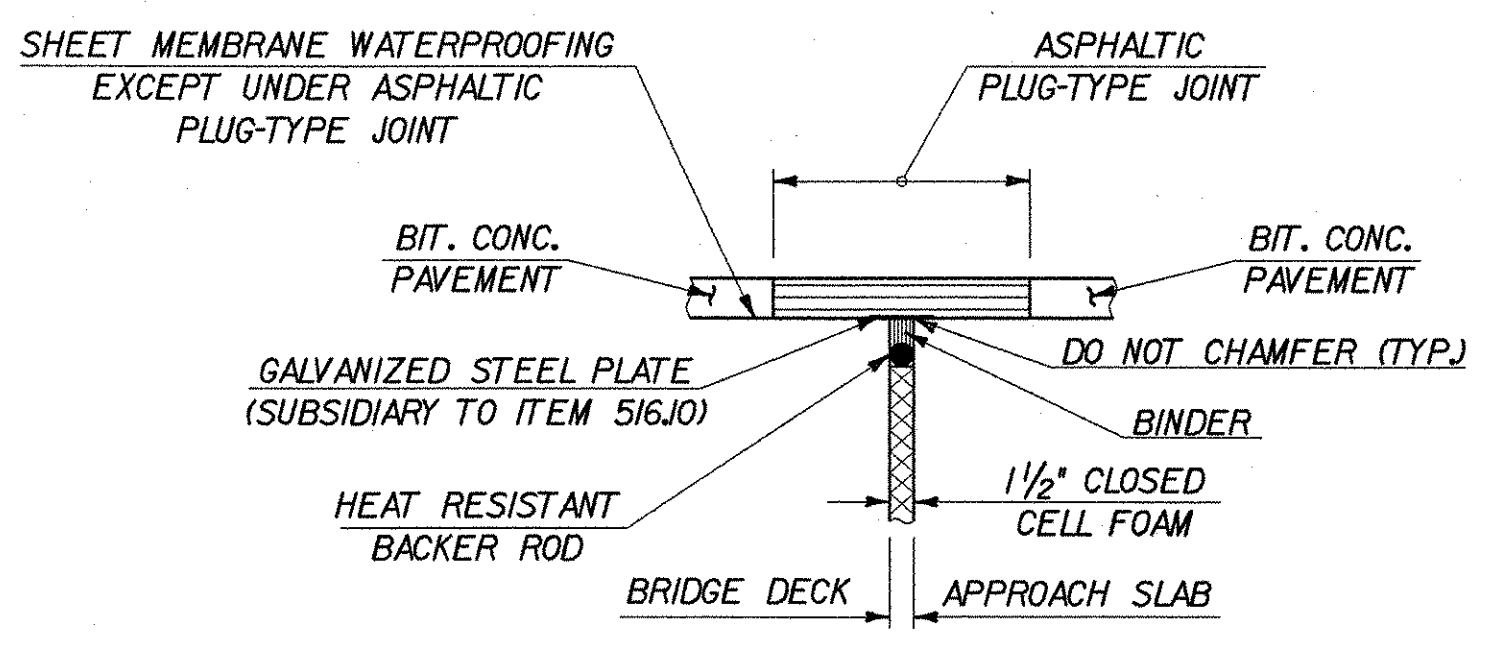


SCORE MARK DETAIL
SCALE: 1/2" = 1'-0"

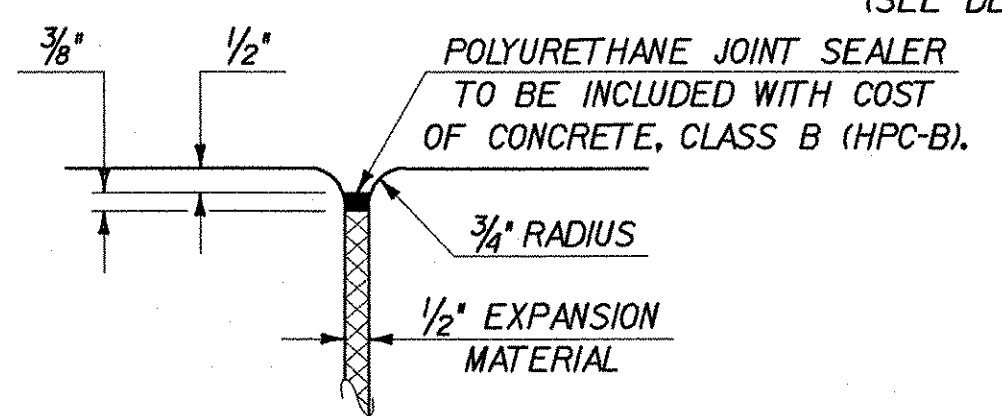


DECK END DETAIL (FIXED)
SCALE: 1" = 1'-0"

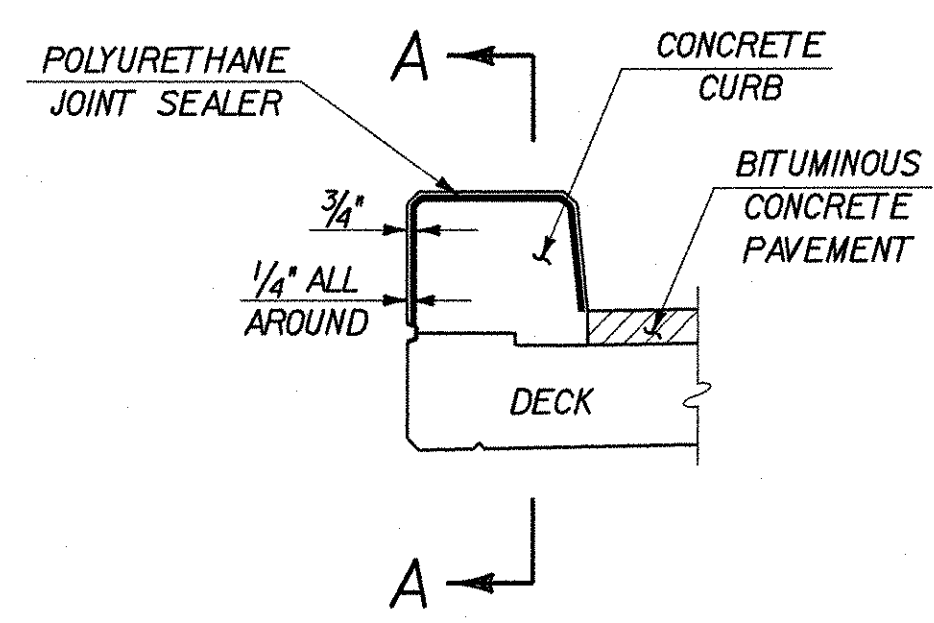
DECK END DETAIL (EXPANSION)
SCALE: 1" = 1'-0"



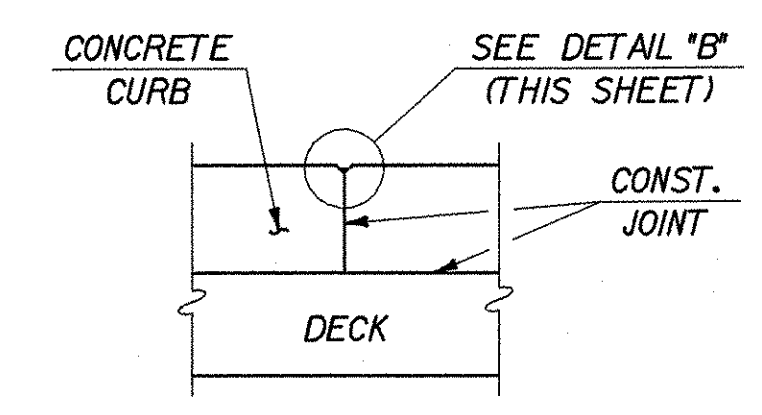
WIDE-BAND PAVEMENT JOINT DETAIL
NOT TO SCALE



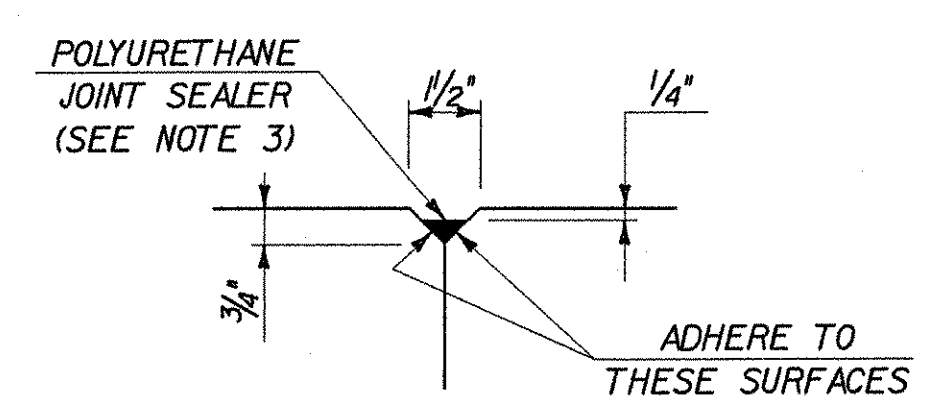
JOINT BETWEEN FASCIA AND WINGWALL
SCALE: 3" = 1'-0"



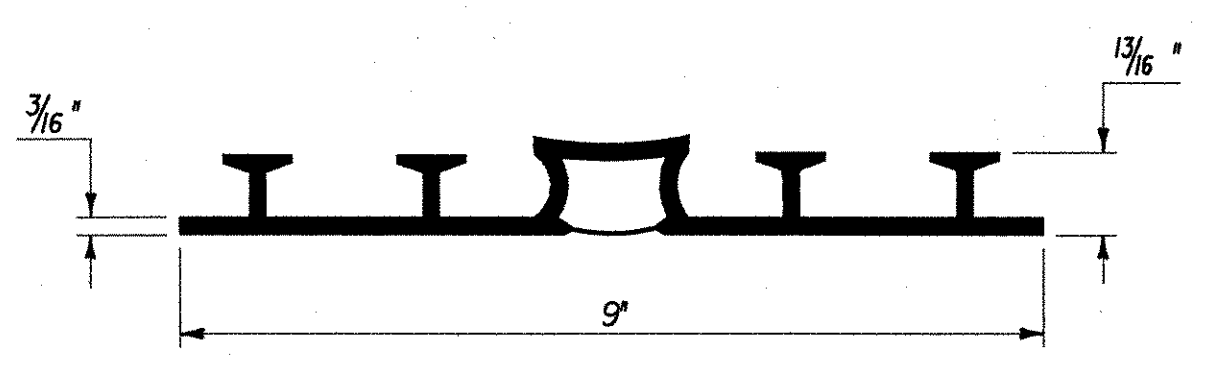
CONCRETE CURB CONSTRUCTION JOINT
SCALE: 3/4" = 1'-0"



SECTION A-A
SCALE: 3/4" = 1'-0"

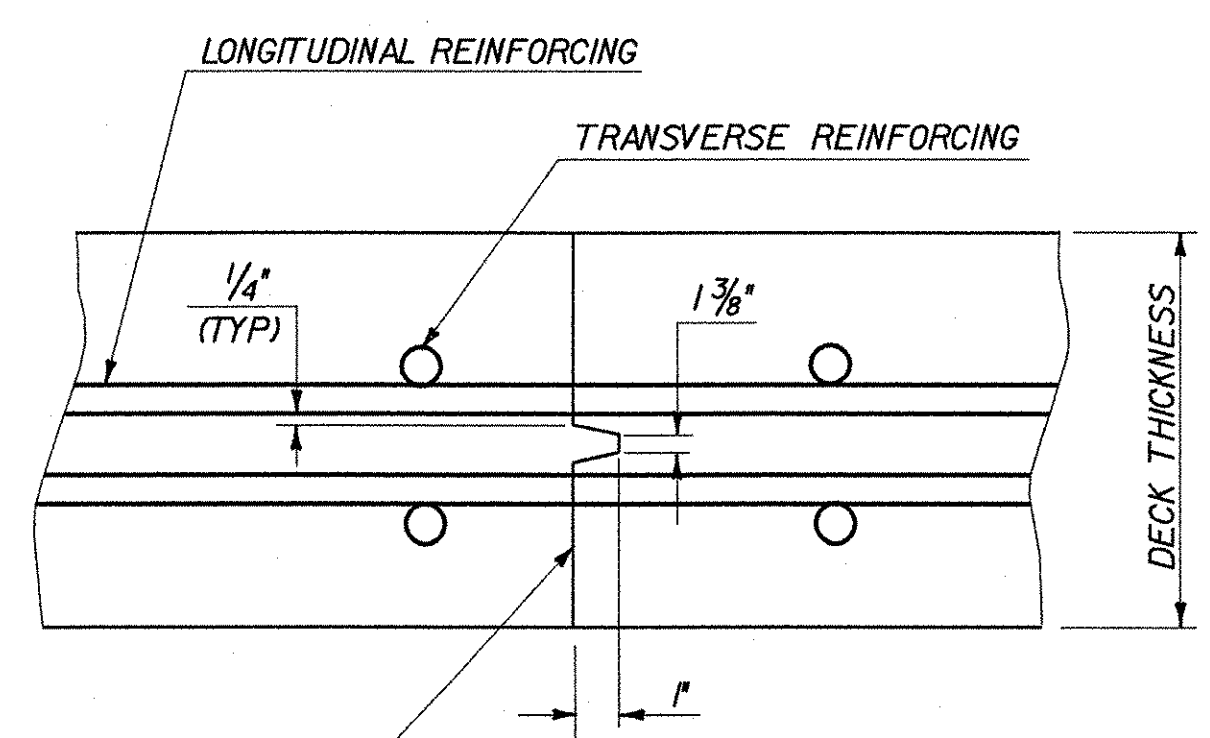


DETAIL "B"
SCALE: 3" = 1'-0"



P.V.C. WATERSTOP

THE COSTS FOR P.V.C. WATERSTOP SHALL BE INCLUDED IN THE UNIT PRICE BID FOR CONCRETE. OTHER CONFIGURATIONS MAY BE USED UPON APPROVAL OF THE STRUCTURES ENGINEER.
SCALE: 6" = 1'-0"



TRANSVERSE BRIDGE SLAB CONSTRUCTION JOINT DETAILS
SCALE: 3" = 1'-0"

CURB CONSTRUCTION JOINT NOTES

- CONSTRUCTION JOINTS THROUGH CONCRETE CURBS SHALL BE SPACED MAXIMUM 15'-0" CENTER TO CENTER AND SHALL BE 1'-6" MINIMUM FROM THE CENTER OF THE NEAREST BRIDGE RAIL POST. CONCRETE SHALL BE PLACED IN ALTERNATING SECTIONS WITH A MINIMUM OF 48 HOURS DELAY BETWEEN ADJACENT POURS.
- LONGITUDINAL REINFORCING SHALL PASS THROUGH CONCRETE CURB CONSTRUCTION JOINTS.
- POLYURETHANE JOINT SEALER PER SUBSECTION 524.06C COLOR TO MATCH CONCRETE. COST TO BE INCLUDED IN THE UNIT PRICE BID FOR CONCRETE.

STATE OF VERMONT AGENCY OF TRANSPORTATION

Town Of	SHELBURNE	Bridge No.	15
Highway No.	TH 3	Log Sta.	
		Surv. Sta.	
BOSTWICK ROAD OVER VERMONT RAILWAY			
DECK DETAILS (1 OF 2)			
Designed By	L. WIXSON	Drawn By	S. MERKMAN
Checked By	R. JOY	Date	05/03
		Bridge Design Supervisor	M. ZYDEL
PROJECT	SHELBURNE	PROJECT NO.	BRO 1445(30)
I.G.C. Info. M:\595402_Bostwick\BRIDGE\6m\ar_z\196dfl.dgn			
Bridge Sheet No.	BR106	Sheet	46 of 73



PLOTTED 01-AUG-2003