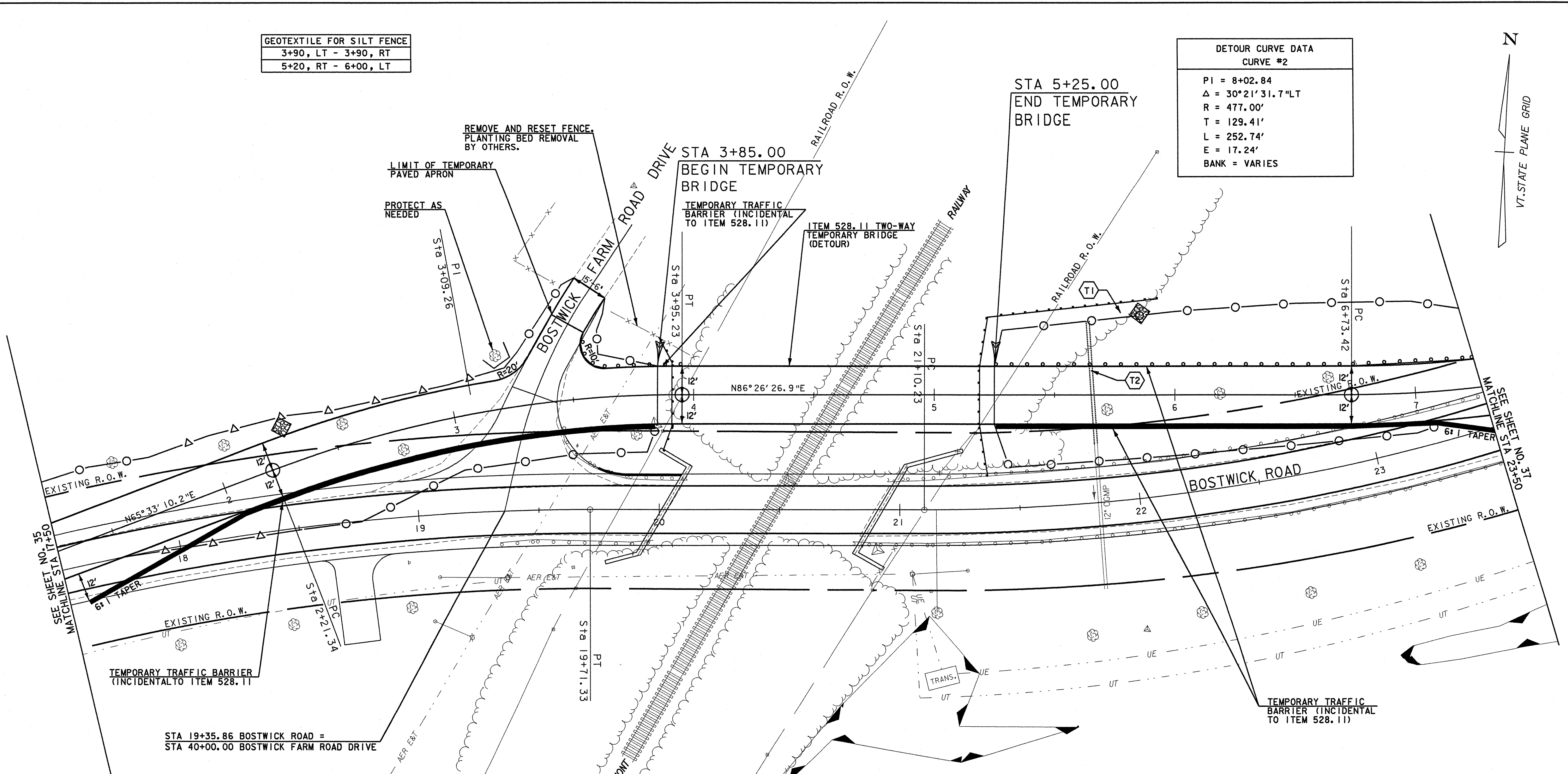
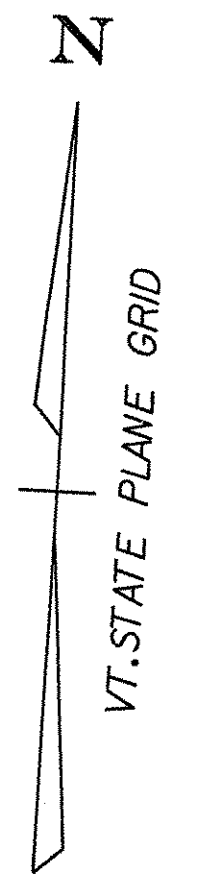


GEOTEXTILE FOR SILT FENCE	
3+90, LT - 3+90, RT	
5+20, RT - 6+00, LT	

DETOUR CURVE DATA	
CURVE #2	
PI = 8+02.84	
Δ = 30°21'31.7"LT	
R = 477.00'	
T = 129.41'	
L = 252.74'	
E = 17.24'	
BANK = VARIES	



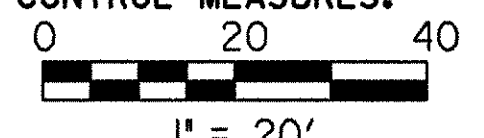
- (T1) STA 21+75, LT TO STA 22+75, LT
CONSTRUCT 100' OF TOE OF SLOPE DITCH
(SEE CROSS SECTIONS AND DRAINAGE DETAIL SHEET)
INCIDENTAL TO ITEM 528.11
- (T2) STA 21+84, LT 34.5 TO STA 21+85, LT 75.6
CONSTRUCT 12' x 5' CGMP EXTENSION
INCIDENTAL TO ITEM 528.11

- STONE DITCH
- WETLANDS
- EROSION MATTING
- HAYBALES
- STONE CHECK DAM

GENERAL NOTES:

1. THE EXISTING BRIDGE HAS BEEN RECONFIGURED TO OPERATE AS A SIGNALIZED ALTERNATING ONE-WAY ROAD. THIS WORK IS NOT REFLECTED IN THE EXISTING DETAIL SHOWN ON THE LAYOUT PLANS.
2. VTTRANS DISTRICT 5 FORCES WILL REMOVE THE TEMPORARY TRAFFIC SIGNALS AFTER THE TWO-WAY TEMPORARY BRIDGE IS OPENED. THE CONTRACTOR SHALL CONTACT THE DISTRICT 5 ADMINISTRATOR TWO WEEKS PRIOR TO THE OPENING OF THE TEMPORARY BRIDGE.
3. THE CONTRACTOR SHALL SALVAGE ALL SIGNS AND TEMPORARY BARRIER INSTALLED BY THE DISTRICT AND RETURN IT TO THE DISTRICT 5 OFFICE AT 5 BARNES AVENUE IN COLCHESTER. THE CONTRACTOR SHALL SALVAGE ALL PLYWOOD AND DIMENSIONAL LUMBER TO DISTRICT 5 (REPLACING ANY MATERIALS DAMAGED DURING DEMOLITION). CONTRACTOR HAS THE OPTION OF PROVIDING AN EQUIVALENT AMOUNT OF LUMBER TO THE DISTRICT. THESE TASKS WILL BE INCIDENTAL TO ITEM 529.15 - REMOVAL OF STRUCTURE.
4. SEE LAYOUT PLANS FOR ADDITIONAL EROSION CONTROL MEASURES.
5. SEE LAYOUT PLANS FOR LANDSCAPING SAVE AND REMOVAL INFORMATION.
6. DETOUR TRAFFIC CONTROL TO FOLLOW STANDARD E-107, UNLESS OTHERWISE SHOWN ON THESE DRAWINGS. DETOUR DESIGN SPEED IS 25 MPH.
7. INCIDENTAL TO ITEM 528.11 IS THE ACQUISITION AND PLACEMENT OF APPROXIMATELY 2000 CUBIC YARDS OF EARTH BORROW AND THE EXCAVATION AND REMOVAL OF APPROXIMATELY 1540 CUBIC YARDS OF THAT MATERIAL AFTER THE COMPLETION OF THE PROJECT. (SEE CROSS SECTIONS).
8. MATERIAL PLACED AT THE ENDS OF THE TEMPORARY CONCRETE BARRIER BY THE DISTRICT WILL BE REMOVED BY THE CONTRACTOR. ITEM 203.15 - COMMON EXCAVATION.

DATUM	
VERTICAL	NAVD 88
HORIZONTAL	NAD 83 (1996)



DETOUR LAYOUT SHEET

PROJECT NAME:	SHELBURNE
PROJECT NUMBER:	BRO 1445(30)
FILE NAME:	m:\595402 bostwick\hwy\DRAW\DETPN\det003.dgn
PROJECT LEADER:	MBZ
DESIGNED BY:	DMB
CHECKED BY:	MDL
PLOT DATE:	04-AUG-2003
DRAWN BY:	MJF
SHEET	36 OF 73