

GPS CONTROL POINTS

F 65

STANDARD DISC STAMPED

F 65

** N = 80139.1286

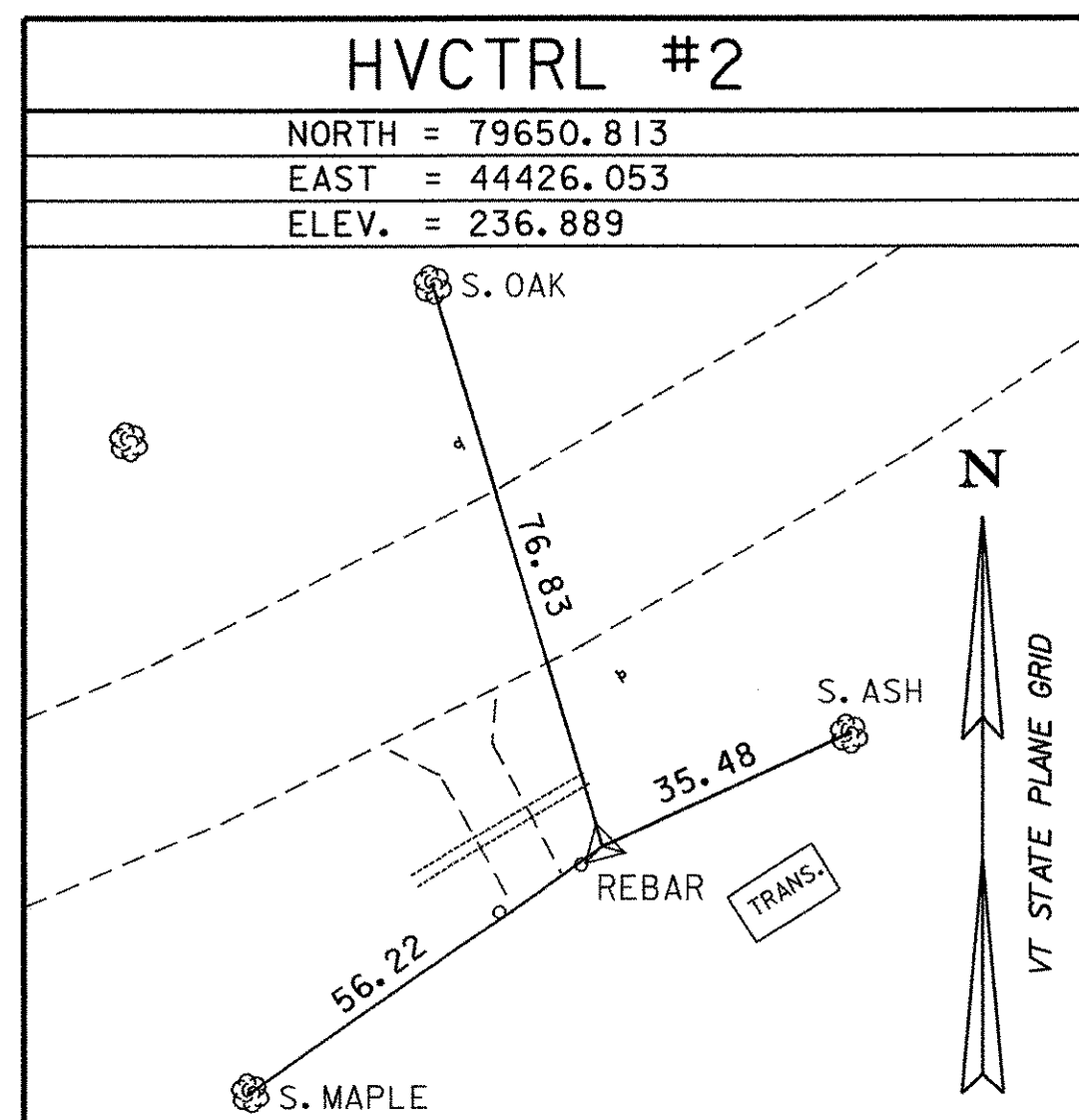
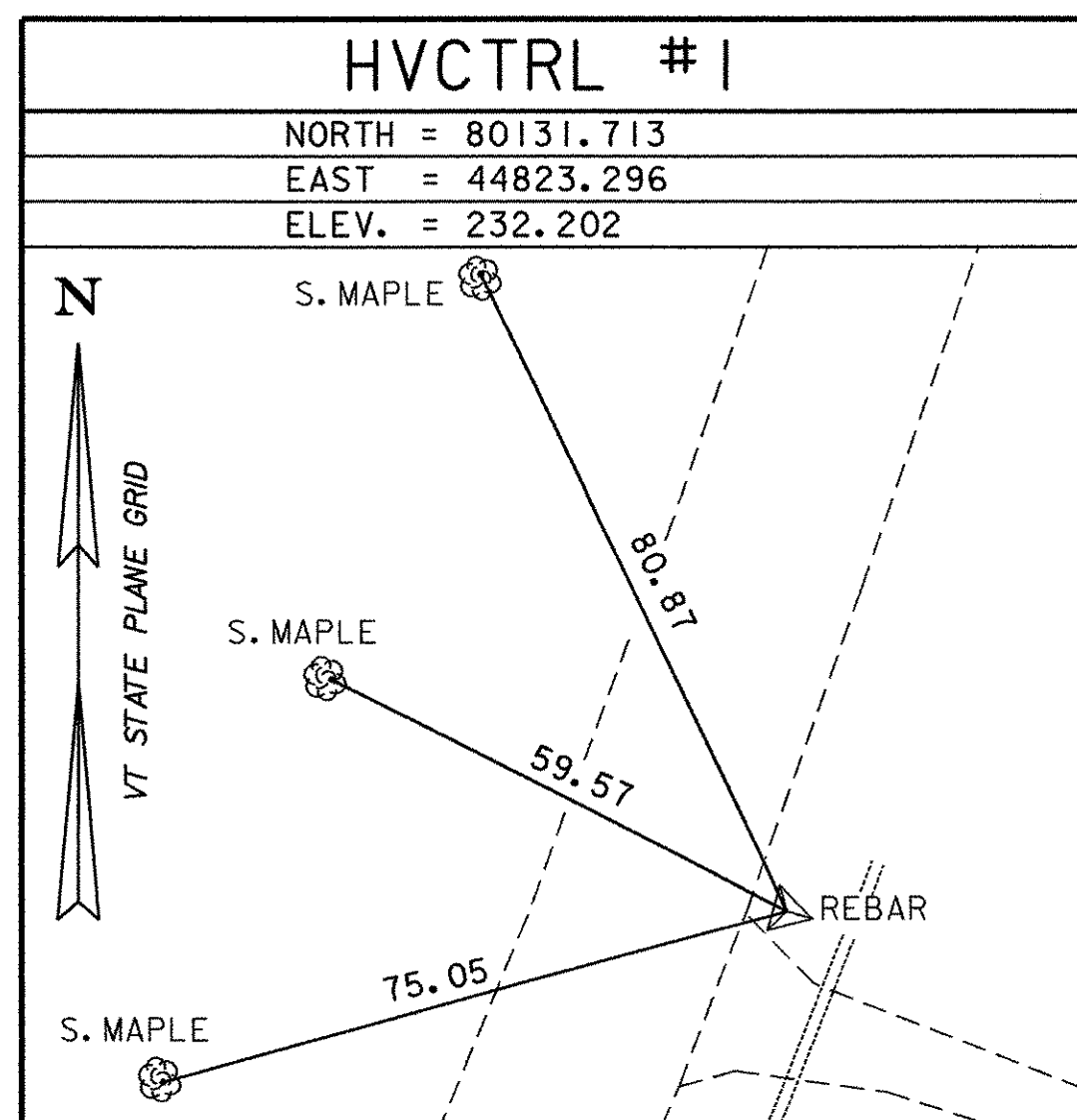
E = 48455.5447

ELEV. = 266.361

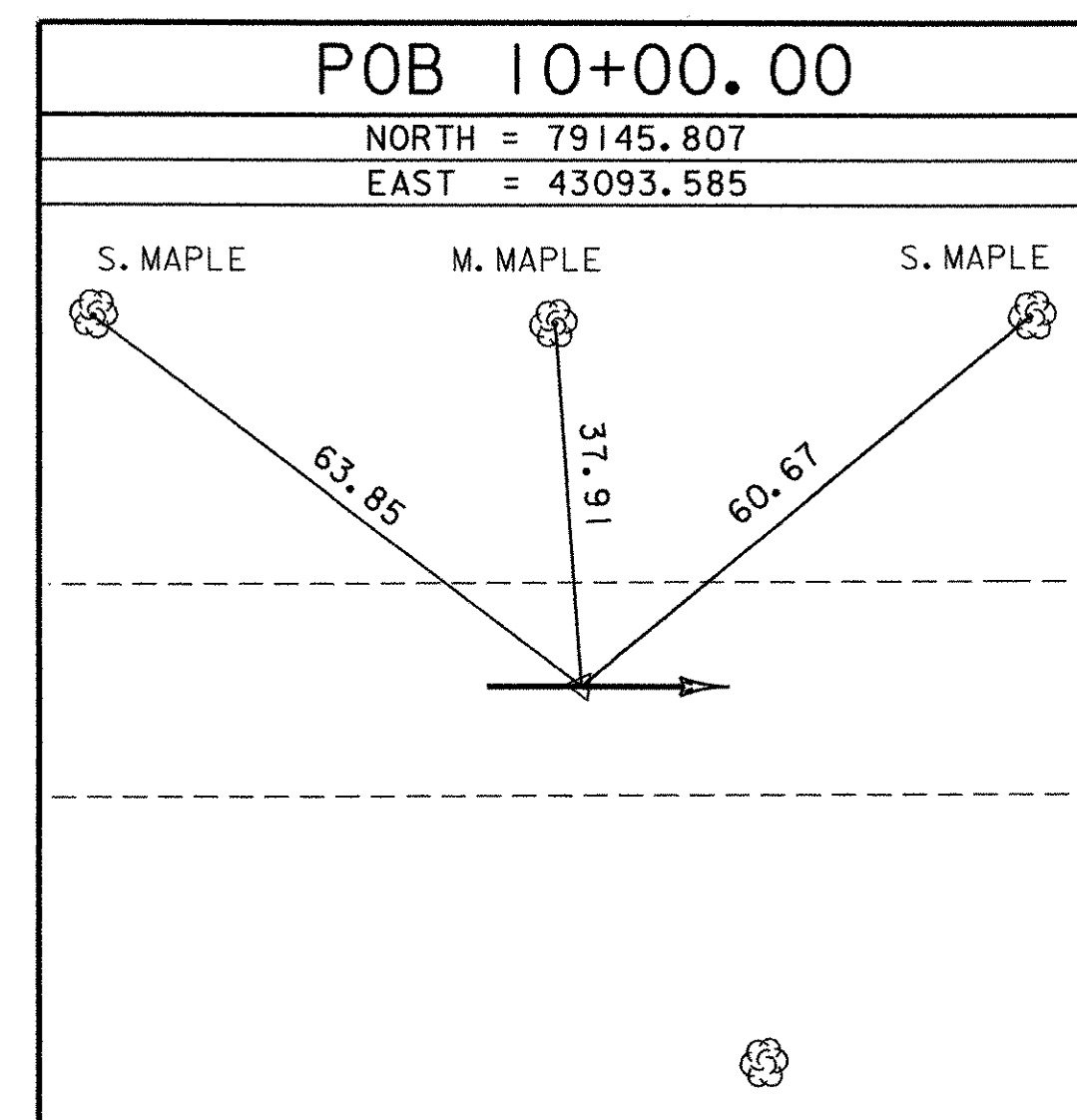
GENERAL LOCATION, SHELBURNE, VT. OWNERSHIP, COUNTRYSIDE MOTEL, SHELBURNE, VT. TO REACH FROM THE METHODIST CHURCH IN SHELBURNE VILLAGE GO SOUTH ALONG U.S. ROUTE 7 FOR 1.0 MI (1.6 KM) TO THE MARK ON THE LEFT IN THE LAWN AT THE COUNTRYSIDE MOTEL. TO REACH FROM THE JUNCTION OF VT ROUTE 22A AND U.S. ROUTE 7 IN VERGENNES GO NORTH ALONG U.S. ROUTE 7 FOR 13.1 MI (21.1 KM) TO THE MARK ON THE RIGHT. THE MARK IS 13.7 METERS (44.9 FT) NORTHEAST OF THE CENTERLINE OF U.S. ROUTE 7, 26.9 METERS (88.3 FT) SOUTH OF THE CENTERLINE OF A DRIVEWAY LEADING TO THE MOTEL, AND 13.5 METERS (44.3 FT) SOUTHWEST OF LIGHT POLE 01.

** TO ALLOW THE AGENCY DESIGN PLANE COORDINATES TO FIT THE STATE PLANE COORDINATES, ADD 600000 TO THE NORTHING & ADD 1400000 TO THE EASTINGS, TO THE ABOVE AND BELOW VALUES.
 * DESCRIPTION PROVIDED BY VERMONT AGENCY OF TRANSPORTATION GEODETIC SURVEY UNIT

TRAVERSE TIES

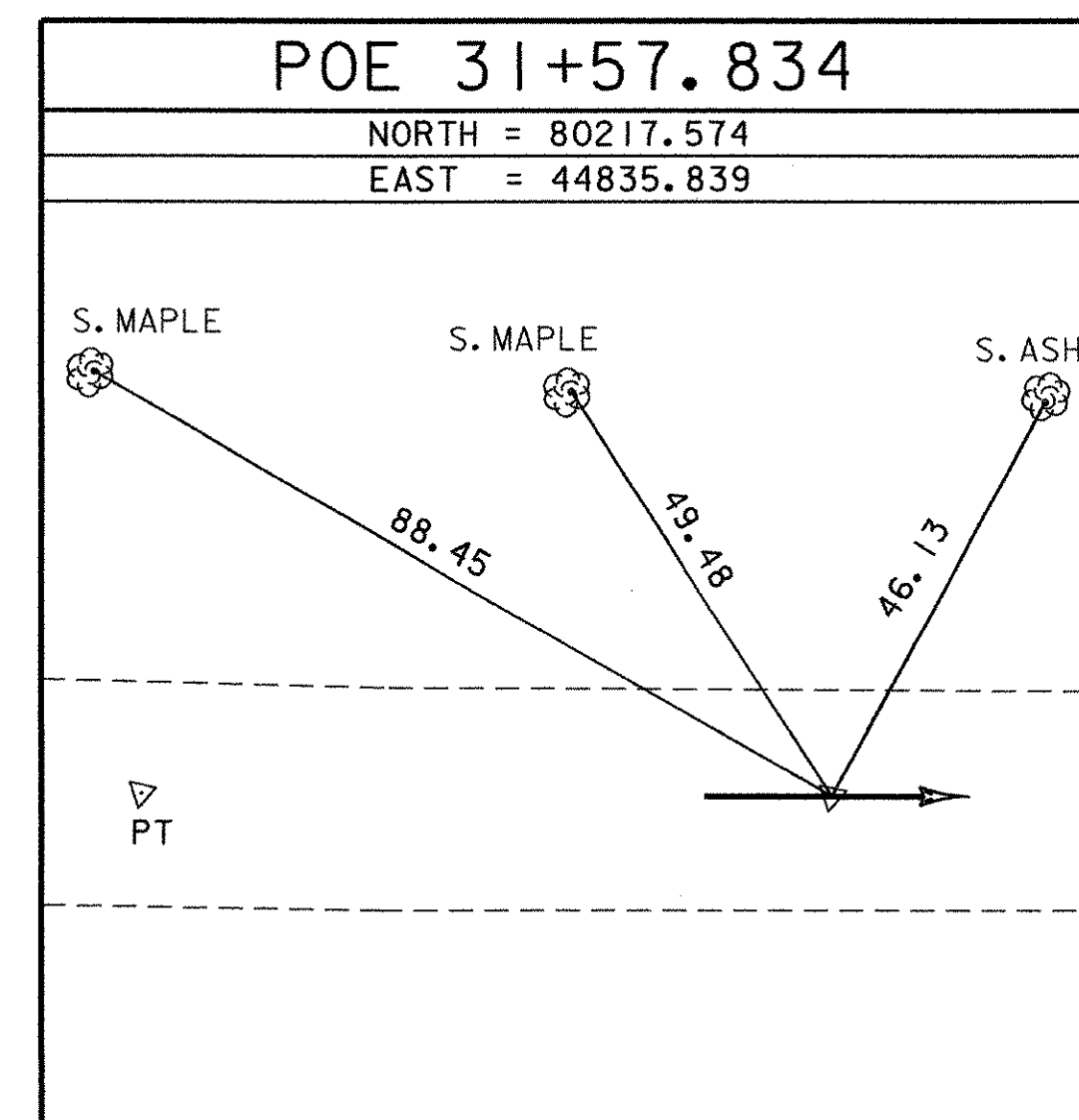
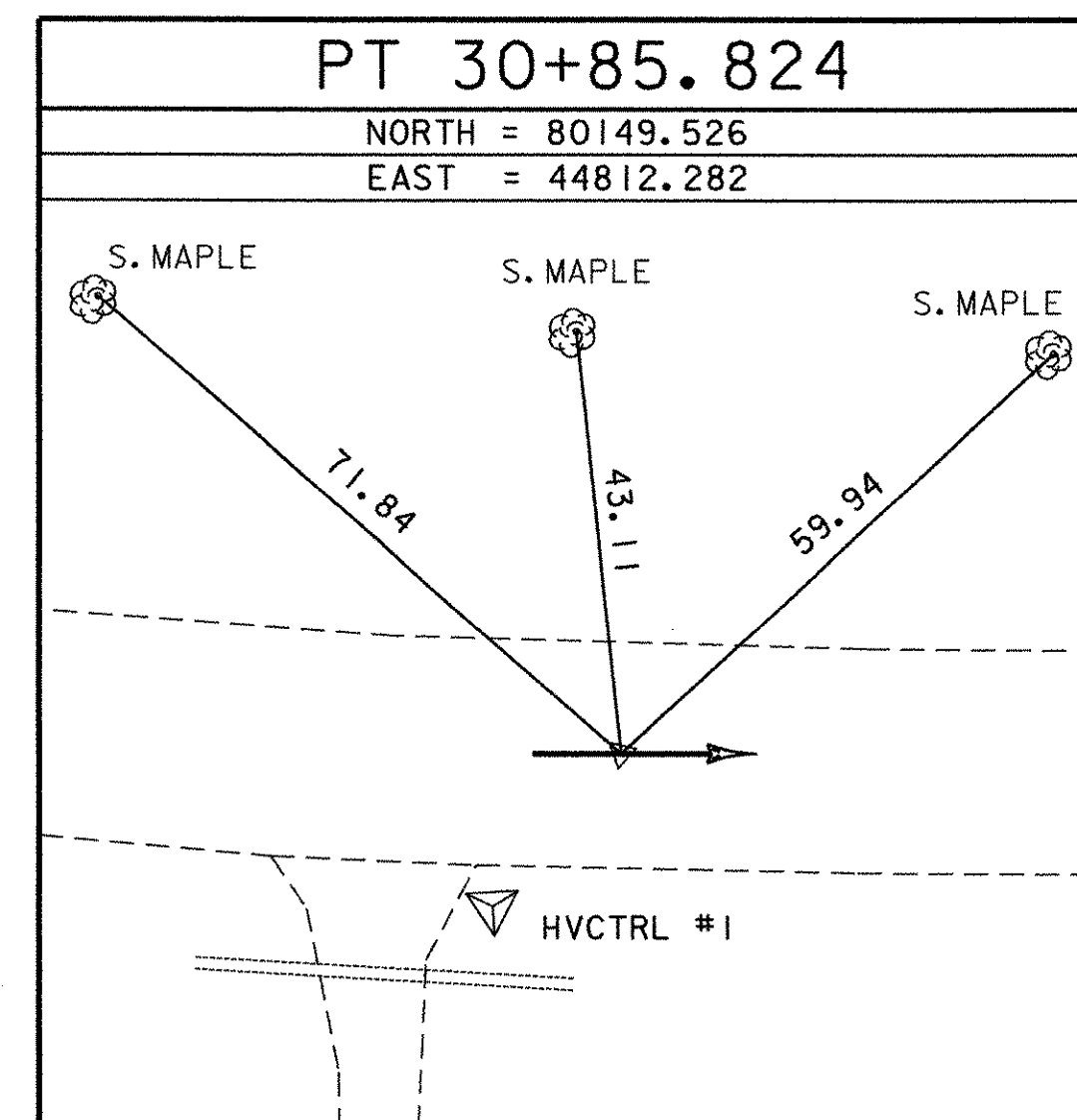
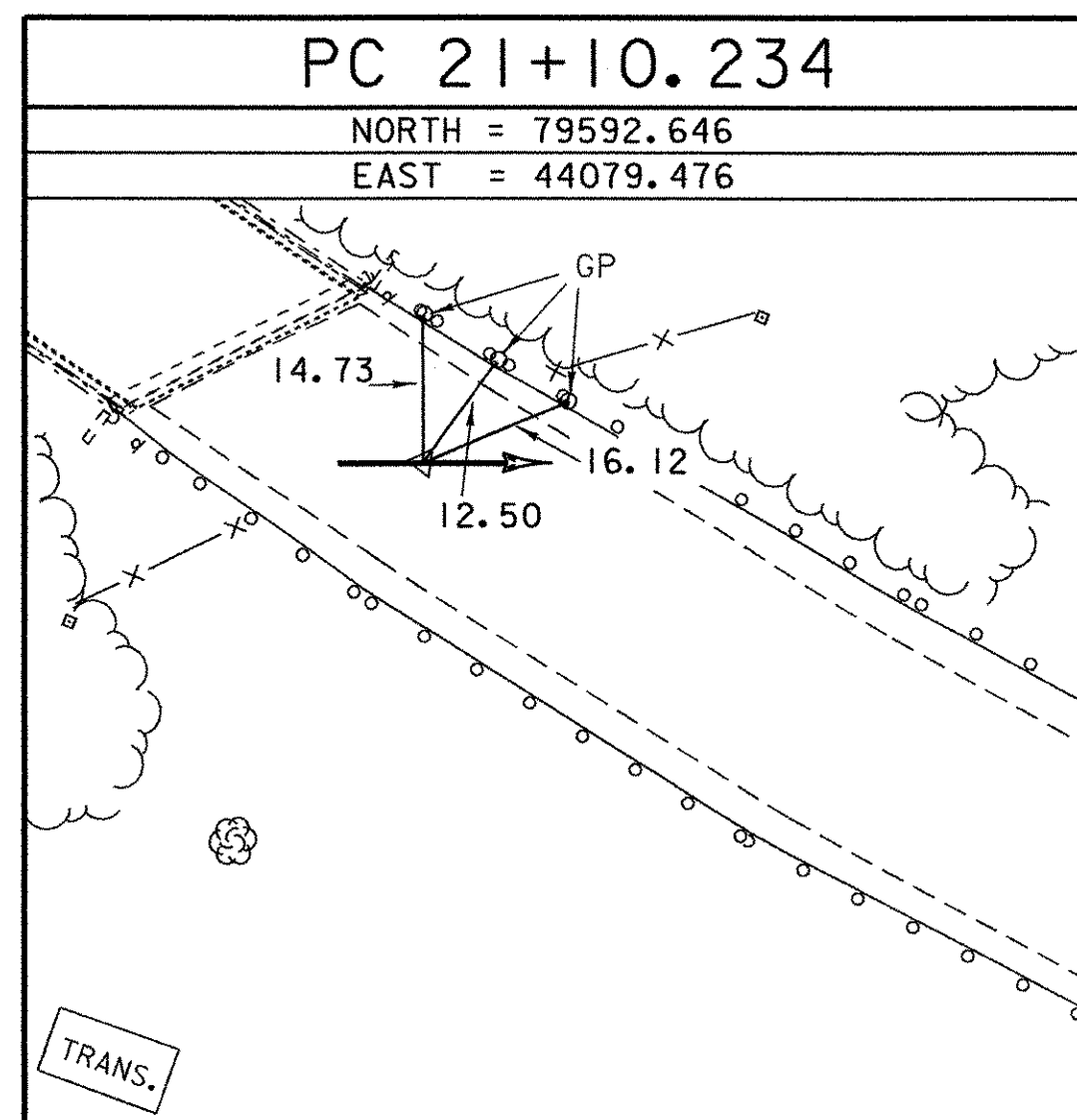
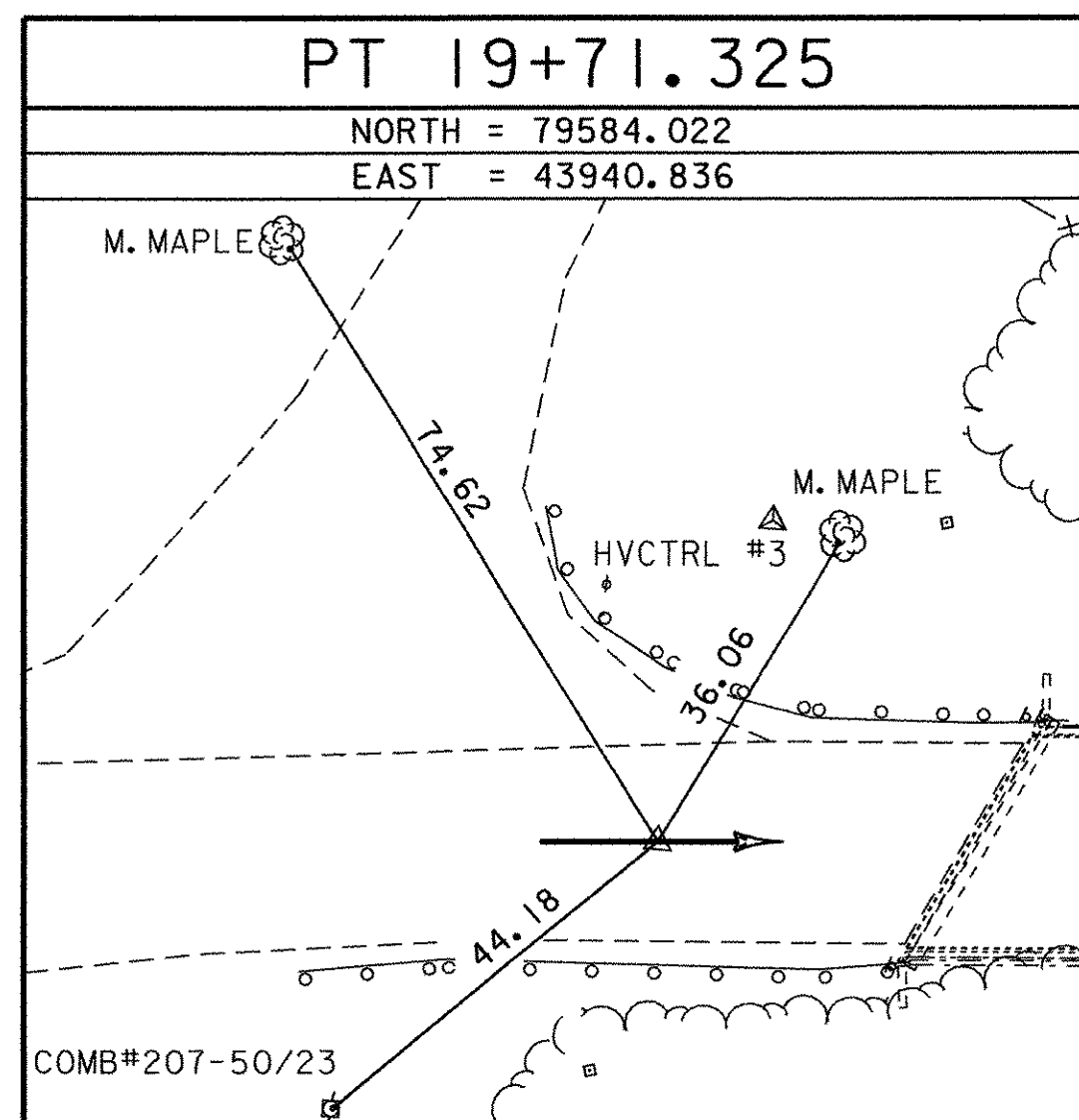
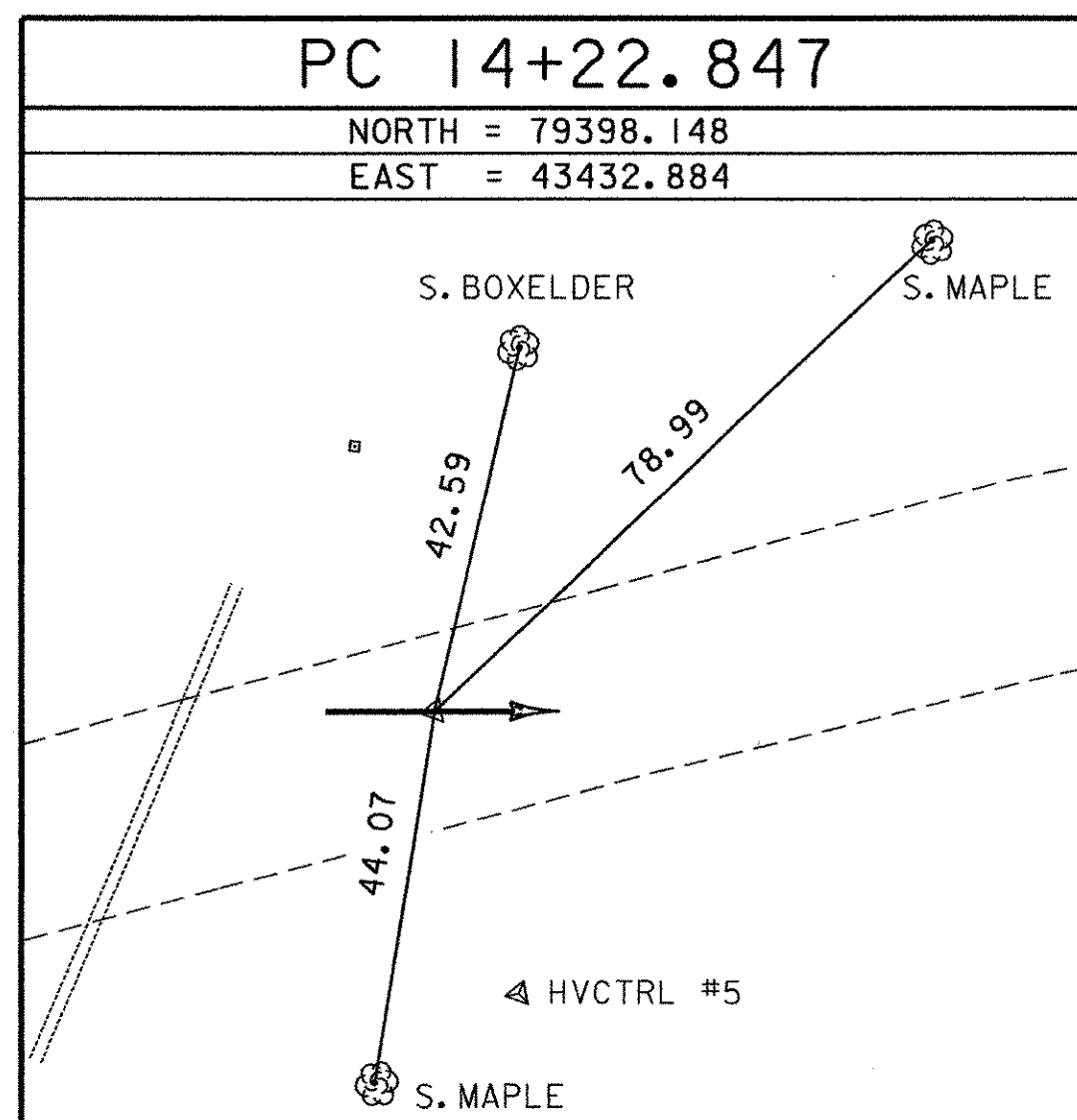


ALIGNMENT TIES



* MAIN TRAVERSE COMPLETED: JULY 1999 BY VS&E

ALIGNMENT TIES



* ALIGNMENT STAKED: OCTOBER 30, 2002 BY: L. ORVIS PC & J. HULETT

DATUM	
VERTICAL	NAVD88
HORIZONTAL	NAD83 (96)
ADJUSTMENT	LEAST SQ.

TIE SHEET

PROJECT NAME: SHELBURNE
 PROJECT NUMBER: BRO 1445(30)

FILE NAME: 94J96/structures/sj96t1.dgn PLOT DATE: 04-AUG-2003
 PROJECT LEADER: MBZ DRAWN BY: J.HULETT
 DESIGNED BY: DMB CHECKED BY: P.HODGE
 TIE SHEET SHEET 11 OF 73