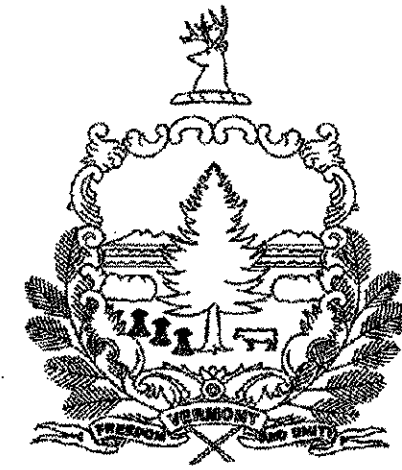
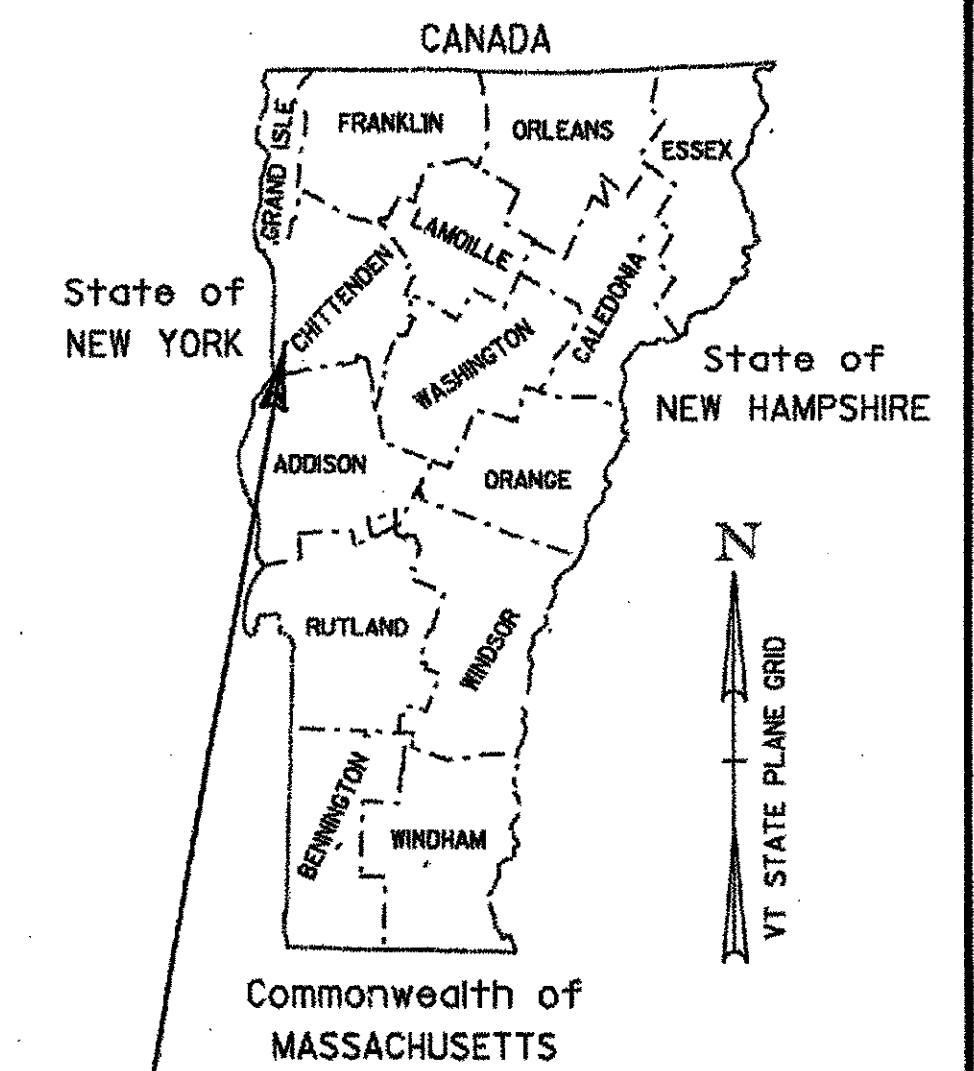
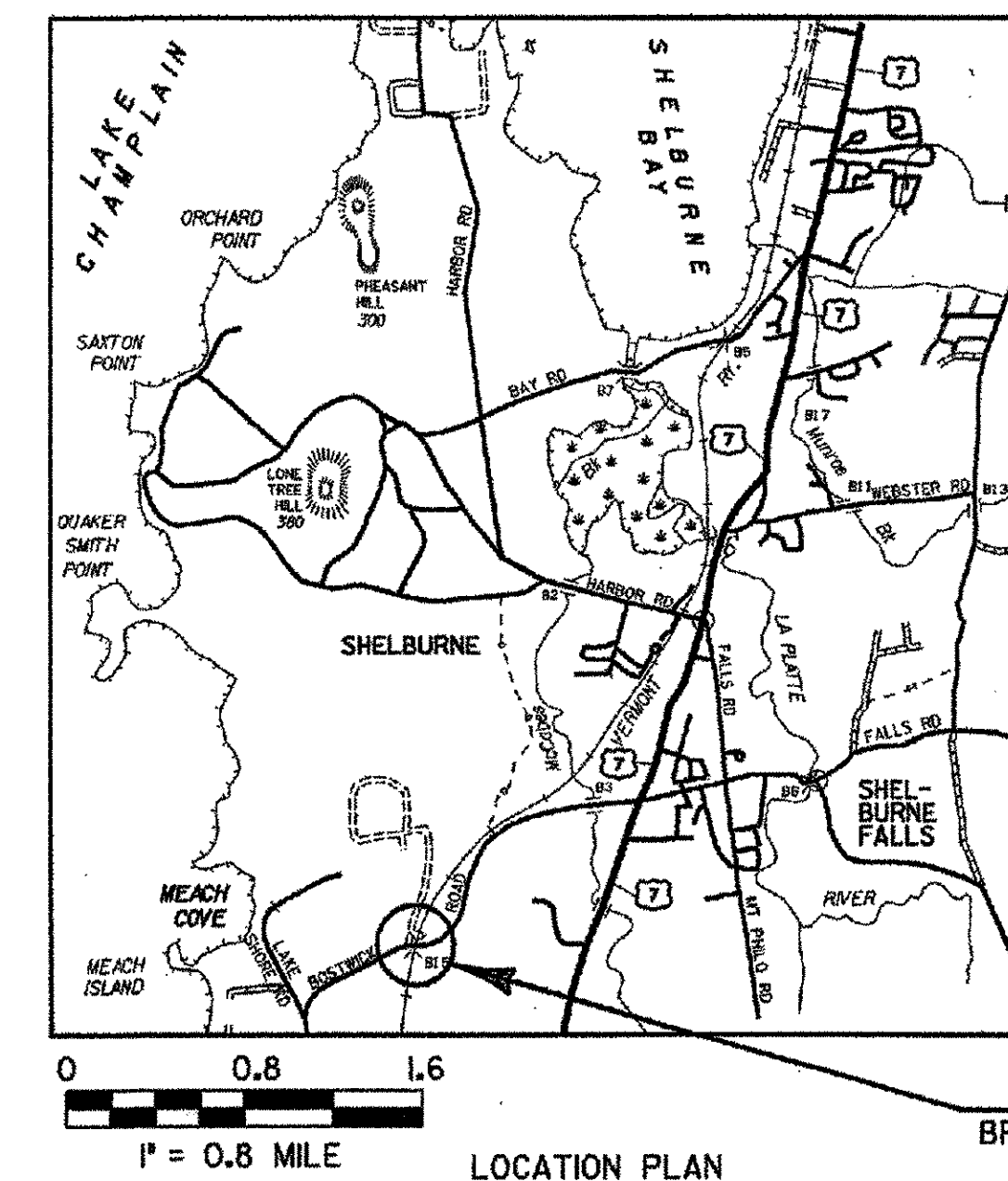


STATE OF VERMONT AGENCY OF TRANSPORTATION



PROPOSED IMPROVEMENT BRIDGE PROJECT TOWN OF SHELBURNE COUNTY OF CHITTENDEN BOSTWICK ROAD (TH3 BR15)

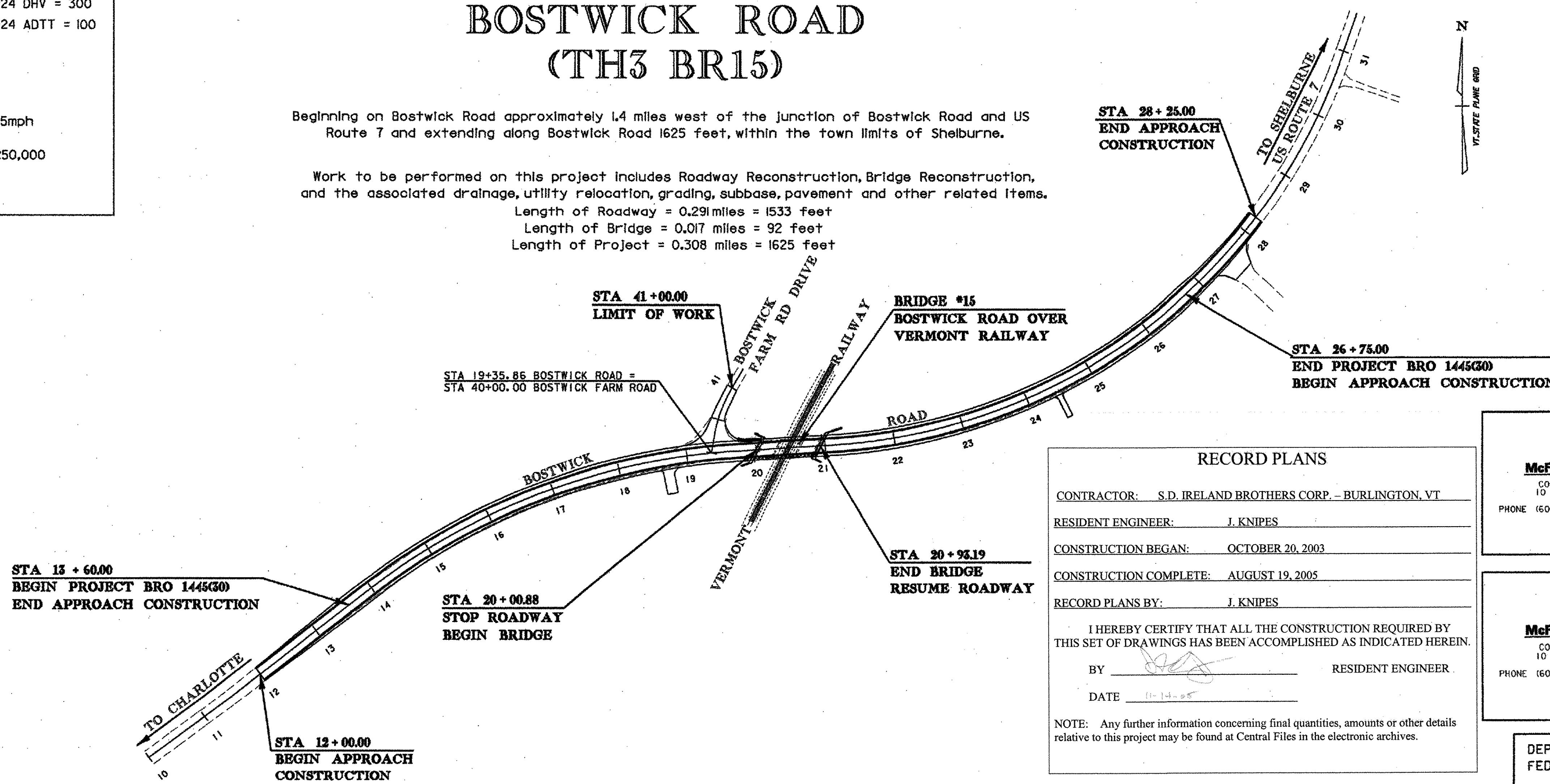


INDEX OF SHEETS
SEE SHEET 2

TRAFFIC DATA	
2004 ADT = 2300	2024 ADT = 3100
2004 DHV = 230	2024 DHV = 300
2004 ADTT = 80	2024 ADTT = 100
XT = 3%	
%D = 50%	
V = 35mph	
POSTED SPEED LIMIT = 35mph	
2004-2024 (20 YEAR) 18K ESAL = 250,000	
2004-2044 (40 YEAR) 18K ESAL = 350,000 LOCAL ROAD	

Beginning on Bostwick Road approximately 1.4 miles west of the junction of Bostwick Road and US Route 7 and extending along Bostwick Road 1625 feet, within the town limits of Shelburne.

Work to be performed on this project includes Roadway Reconstruction, Bridge Reconstruction, and the associated drainage, utility relocation, grading, subbase, pavement and other related items.
 Length of Roadway = 0.291 miles = 1533 feet
 Length of Bridge = 0.017 miles = 92 feet
 Length of Project = 0.308 miles = 1625 feet



CONVENTIONAL SYMBOLS

COUNTY LINE	
TOWN LINE	
LIMITS OF ACCESS	
POINT OF ACCESS	
FENCE LINE	
STONE WALL	
TRAVELED WAY	
GUARD RAIL	
RAILROAD	
SURVEY LINE	
CULVERT	
POWER POLE	
TELEPHONE POLE	
TREES	
CONTROL OF ACCESS	
PROPERTY LINE	
R.O.W. TAKING LINE	
SLOPE RIGHTS	
TOP OF CUT	
TOE OF SLOPE	

SURVEYED BY : VERMONT SURVEYING & ENGINEERING
SURVEYED DATE : 8/1999

DATUM
VERTICAL NAVD 88
HORIZONTAL NAD 83 (1996)

RECORD PLANS

CONTRACTOR: S.D. IRELAND BROTHERS CORP. - BURLINGTON, VT

RESIDENT ENGINEER: J. KNIPES

CONSTRUCTION BEGAN: OCTOBER 20, 2003

CONSTRUCTION COMPLETE: AUGUST 19, 2005

RECORD PLANS BY: J. KNIPES

I HEREBY CERTIFY THAT ALL THE CONSTRUCTION REQUIRED BY THIS SET OF DRAWINGS HAS BEEN ACCOMPLISHED AS INDICATED HEREIN.

BY _____ RESIDENT ENGINEER

DATE: 11-14-05

NOTE: Any further information concerning final quantities, amounts or other details relative to this project may be found at Central Files in the electronic archives.

 McFarland-Johnson, Inc. CONCORD CENTER, STE 210 10 FERRY STREET, UNIT 11 CONCORD, NH 03301 PHONE (603) 225-2978 FAX (603) 225-0095	 Edward D. Johnson 8/1/03 BRIDGE DESIGN
 McFarland-Johnson, Inc. CONCORD CENTER, STE 210 10 FERRY STREET, UNIT 11 CONCORD, NH 03301 PHONE (603) 225-2978 FAX (603) 225-0095	 Dawn M. Benoit 8/1/03 ROADWAY DESIGN



THESE PLANS ARE SUBJECT TO SUCH ENGINEERING CHANGES AS MAY BE REQUIRED BY THE FEDERAL HIGHWAY ADMINISTRATION OR THE DIRECTOR OF PROJECT DEVELOPMENT.
 CONSTRUCTION IS TO BE CARRIED ON IN ACCORDANCE WITH THESE PLANS AND THE STANDARD SPECIFICATIONS FOR CONSTRUCTION DATED 2006, AS APPROVED BY THE FEDERAL HIGHWAY ADMINISTRATION ON JANUARY 4, 2001 FOR USE ON THIS PROJECT, INCLUDING ALL SUBSEQUENT REVISIONS AND SUCH REVISED SPECIFICATIONS AND SPECIAL PROVISIONS AS ARE INCORPORATED IN THESE PLANS.

DEPARTMENT OF TRANSPORTATION
FEDERAL HIGHWAY ADMINISTRATION

APPROVED _____ DATE _____

DIRECTOR OF PROJECT DEVELOPMENT

APPROVED *[Signature]* DATE 8/15/03

PROJECT MANAGER : ROGER WHITCOMB

PROJECT NAME : SHELBURNE
PROJECT NUMBER : BRO 1445(30)

SHEET 1 OF 73 SHEETS