

**END R.O.W. PROJECT**  
**BRO 1442(24)**  
**STA. 40+145.39**  
**65M (213') LT.**

MINER, SHAWN M. & LYNN  
 6+039.2 LT - 6+043.3 RT  
 REPLACE EXISTING 310 mm CGMP WITH  
 NEW 450 mm X 10 800 mm OPTION PIPE  
 NET EL. 174.940; OUTLET EL. 174.540  
 CONSTRUCT 900 mm X 1800 mm X 600 mm DEEP  
 PAD STONE FILL, TYPE I @ OUTLET  
 (SEE PIPE OPTIONS)

**DRIVE #1 CURVE DATA**  
 $\Delta = 30^{\circ}27'45''$  RT  
 R = 34.215  
 T = 9.316  
 L = 18.191  
 E = 1.246  
 BANK = N.C.

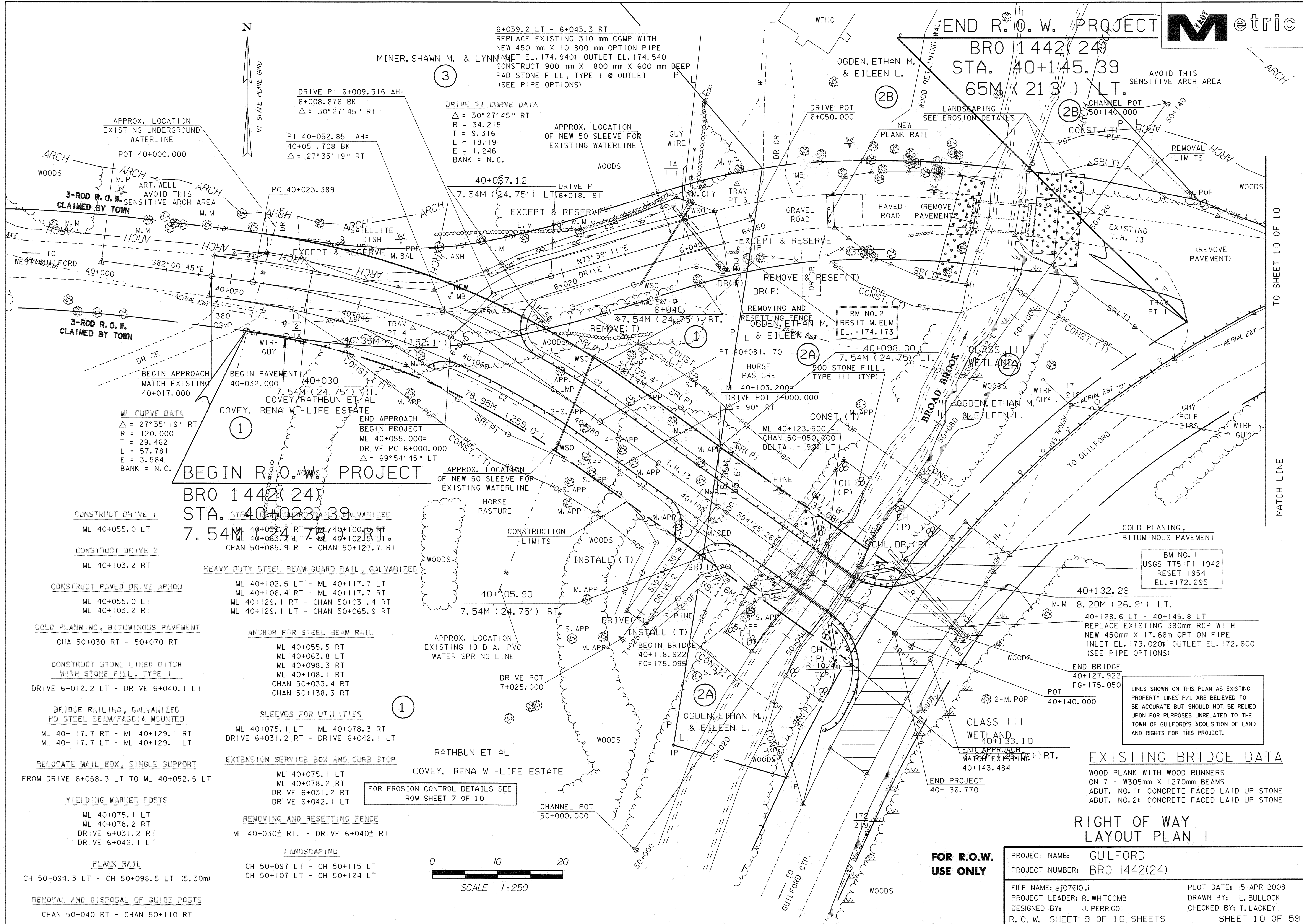
DRIVE PI 6+009.316 AH=  
 6+008.876 BK  
 $\Delta = 30^{\circ}27'45''$  RT  
 PI 40+052.851 AH=  
 40+051.708 BK  
 $\Delta = 27^{\circ}35'19''$  RT

APPROX. LOCATION  
 EXISTING UNDERGROUND  
 WATERLINE

APPROX. LOCATION  
 OF NEW 50 SLEEVE FOR  
 EXISTING WATERLINE

LANDSCAPING  
 SEE EROSION DETAILS

AVOID THIS  
 SENSITIVE ARCH AREA



**BEGIN R.O.W. PROJECT**  
**BRO 1442(24)**  
**STA. 40+023.39**  
**7.54M (24.75') RT.**

**CONSTRUCT DRIVE 1**  
 ML 40+055.0 LT

**CONSTRUCT DRIVE 2**  
 ML 40+103.2 RT

**CONSTRUCT PAVED DRIVE APRON**  
 ML 40+055.0 LT  
 ML 40+103.2 RT

**COLD PLANNING, BITUMINOUS PAVEMENT**  
 CHA 50+030 RT - 50+070 RT

**CONSTRUCT STONE LINED DITCH WITH STONE FILL, TYPE I**  
 DRIVE 6+012.2 LT - DRIVE 6+040.1 LT

**BRIDGE RAILING, GALVANIZED HD STEEL BEAM/FASCIA MOUNTED**  
 ML 40+117.7 RT - ML 40+129.1 RT  
 ML 40+117.7 LT - ML 40+129.1 LT

**RELOCATE MAIL BOX, SINGLE SUPPORT**  
 FROM DRIVE 6+058.3 LT TO ML 40+052.5 LT

**YIELDING MARKER POSTS**  
 ML 40+075.1 LT  
 ML 40+078.2 RT  
 DRIVE 6+031.2 RT  
 DRIVE 6+042.1 LT

**PLANK RAIL**  
 CH 50+094.3 LT - CH 50+098.5 LT (5.30m)

**REMOVAL AND DISPOSAL OF GUIDE POSTS**  
 CHAN 50+040 RT - CHAN 50+110 RT

**ANCHOR FOR STEEL BEAM RAIL**  
 ML 40+055.5 RT  
 ML 40+063.8 LT  
 ML 40+098.3 RT  
 ML 40+108.1 RT  
 CHAN 50+033.4 RT  
 CHAN 50+138.3 RT

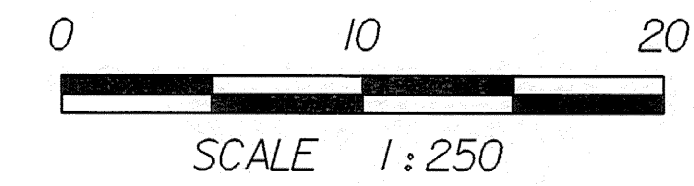
**SLEEVES FOR UTILITIES**  
 ML 40+075.1 LT - ML 40+078.3 RT  
 DRIVE 6+031.2 RT - DRIVE 6+042.1 LT

**EXTENSION SERVICE BOX AND CURB STOP**  
 ML 40+075.1 LT  
 ML 40+078.2 RT  
 DRIVE 6+031.2 RT  
 DRIVE 6+042.1 LT

**REMOVING AND RESETTNG FENCE**  
 ML 40+030± RT. - DRIVE 6+040± RT

**LANDSCAPING**  
 CH 50+097 LT - CH 50+115 LT  
 CH 50+107 LT - CH 50+124 LT

FOR EROSION CONTROL DETAILS SEE  
 ROW SHEET 7 OF 10



**COLD PLANNING, BITUMINOUS PAVEMENT**  
 ML 40+123.500  
 CHAN 50+050.000  
 DELTA = 90° LT

**BM NO. 1**  
 USGS TT5 F1 1942  
 RESET 1954  
 EL. = 172.295

**EXISTING BRIDGE DATA**  
 WOOD PLANK WITH WOOD RUNNERS  
 ON 7 - W305mm X 1270mm BEAMS  
 ABUT. NO. 1: CONCRETE FACED LAID UP STONE  
 ABUT. NO. 2: CONCRETE FACED LAID UP STONE

**RIGHT OF WAY LAYOUT PLAN I**

<b>FOR R.O.W. USE ONLY</b>	
PROJECT NAME:	GUILFORD
PROJECT NUMBER:	BRO 1442(24)
FILE NAME:	sj076101
PROJECT LEADER:	R. WHITCOMB
DESIGNED BY:	J. PERRIGO
R. O. W. SHEET 9 OF 10 SHEETS	
PLOT DATE:	15-APR-2008
DRAWN BY:	L. BULLOCK
CHECKED BY:	T. LACKEY
	SHEET 10 OF 59