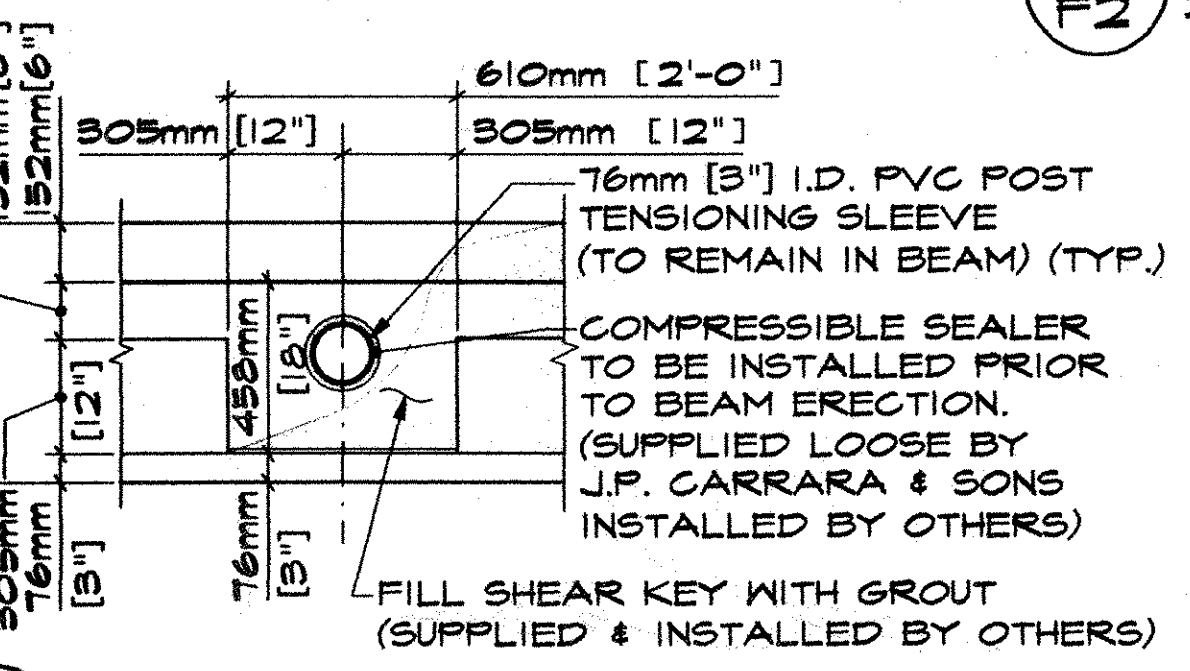
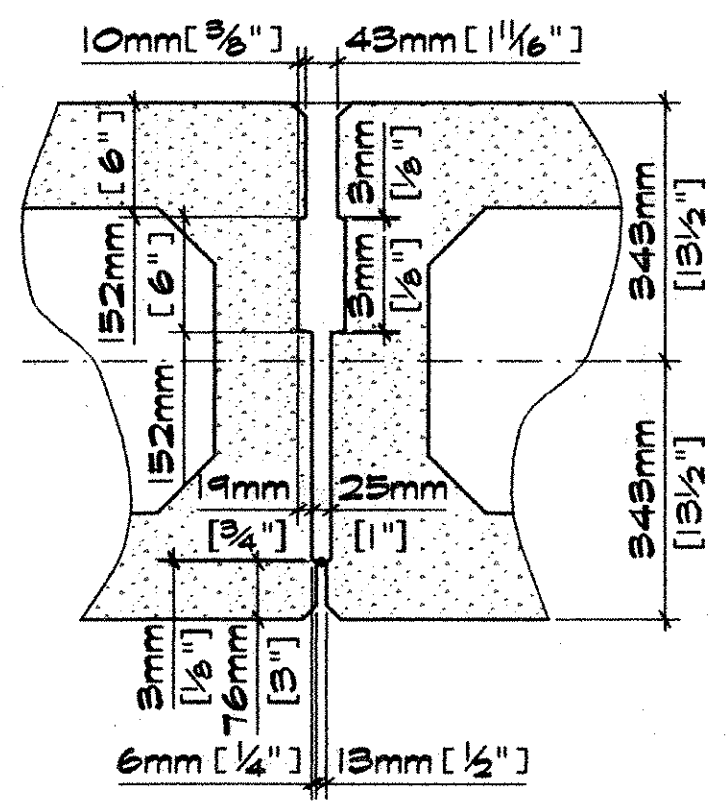


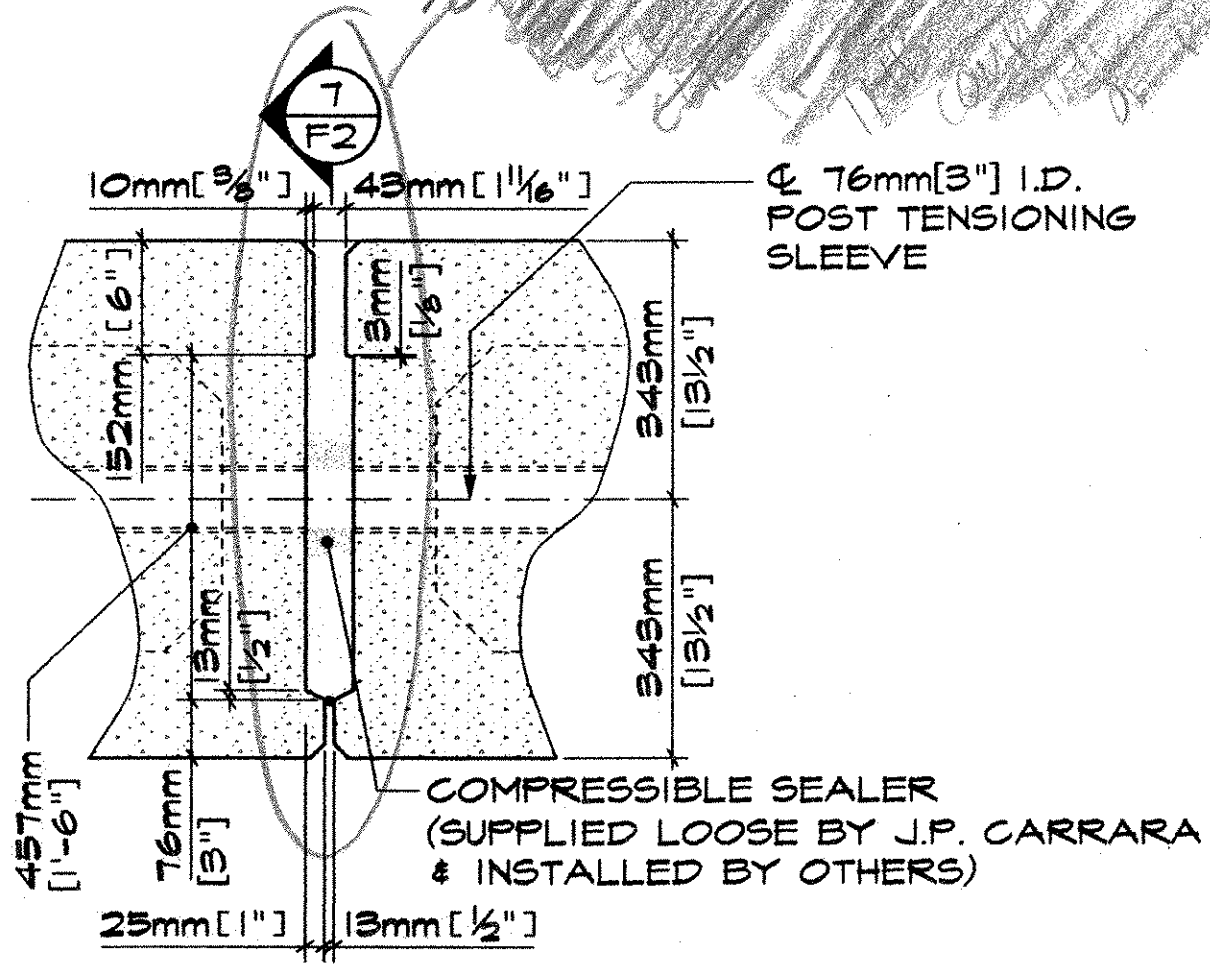
**2 TRANSVERSE SECTION**  
F2 20:1



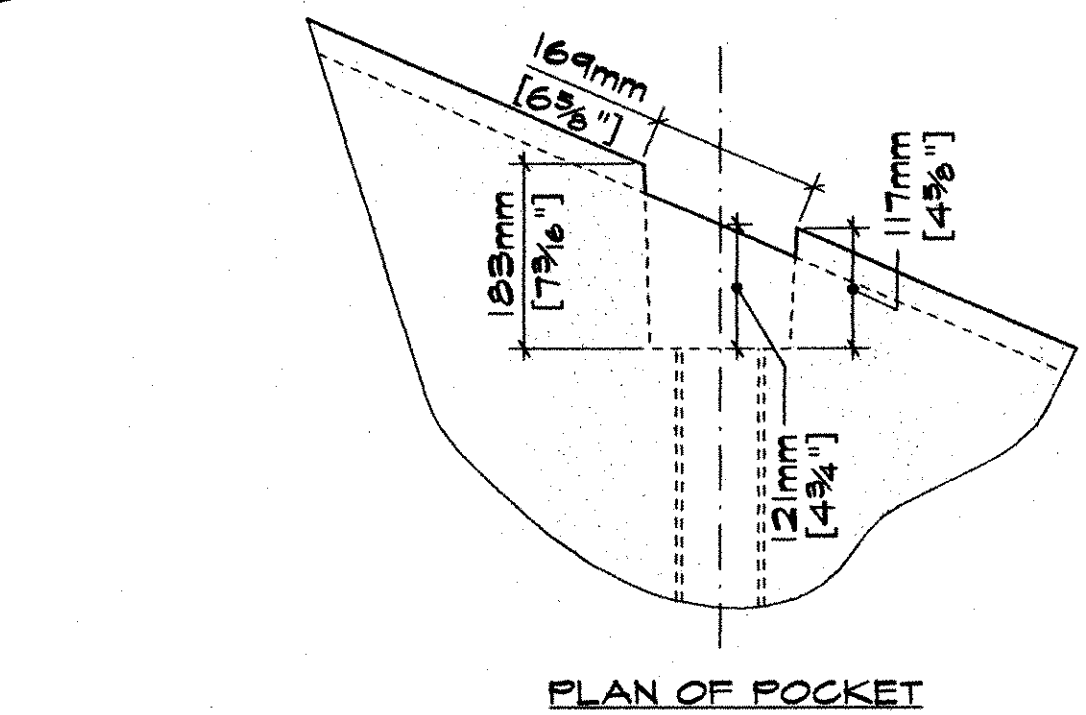
**7 SHEAR KEY SECTION THROUGH DUCT**  
F2 20:1



**5 TYP. SHEAR KEY SECTION**  
F2 10:1



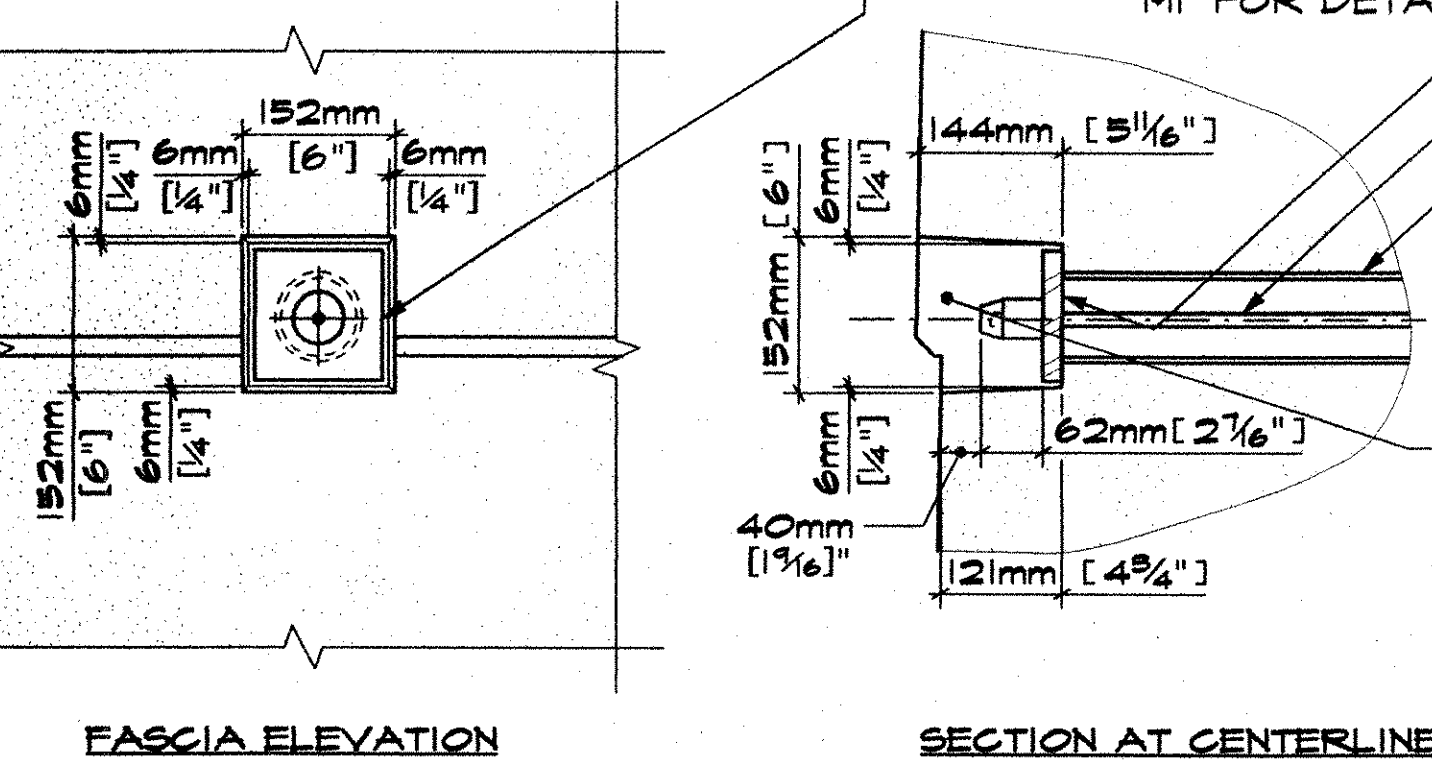
**6 SHEAR KEY SECTION @ P.T. SLEEVE**  
F2 10:1



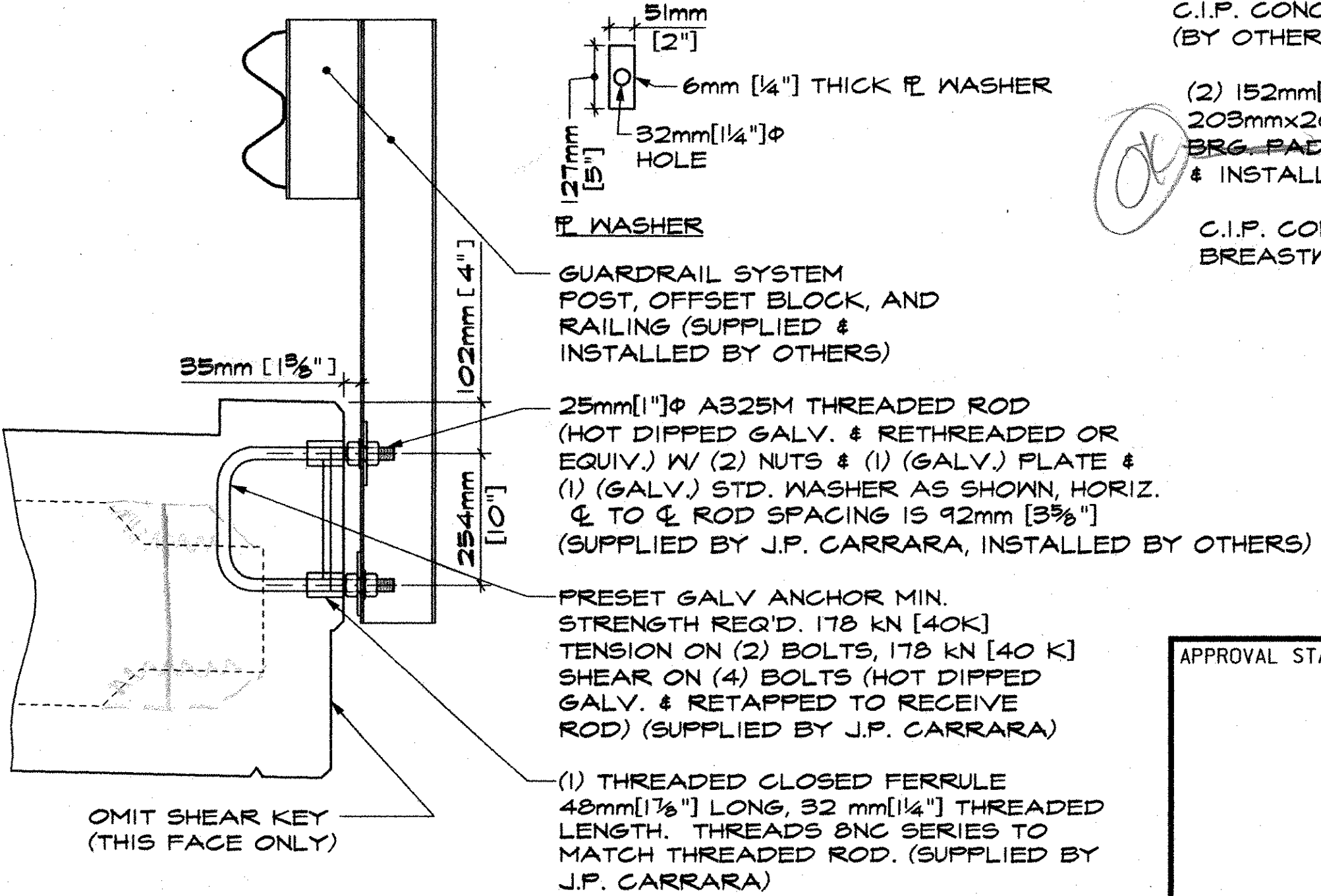
PLAN OF POCKET

EM-1 (19mm [3/4\"/>

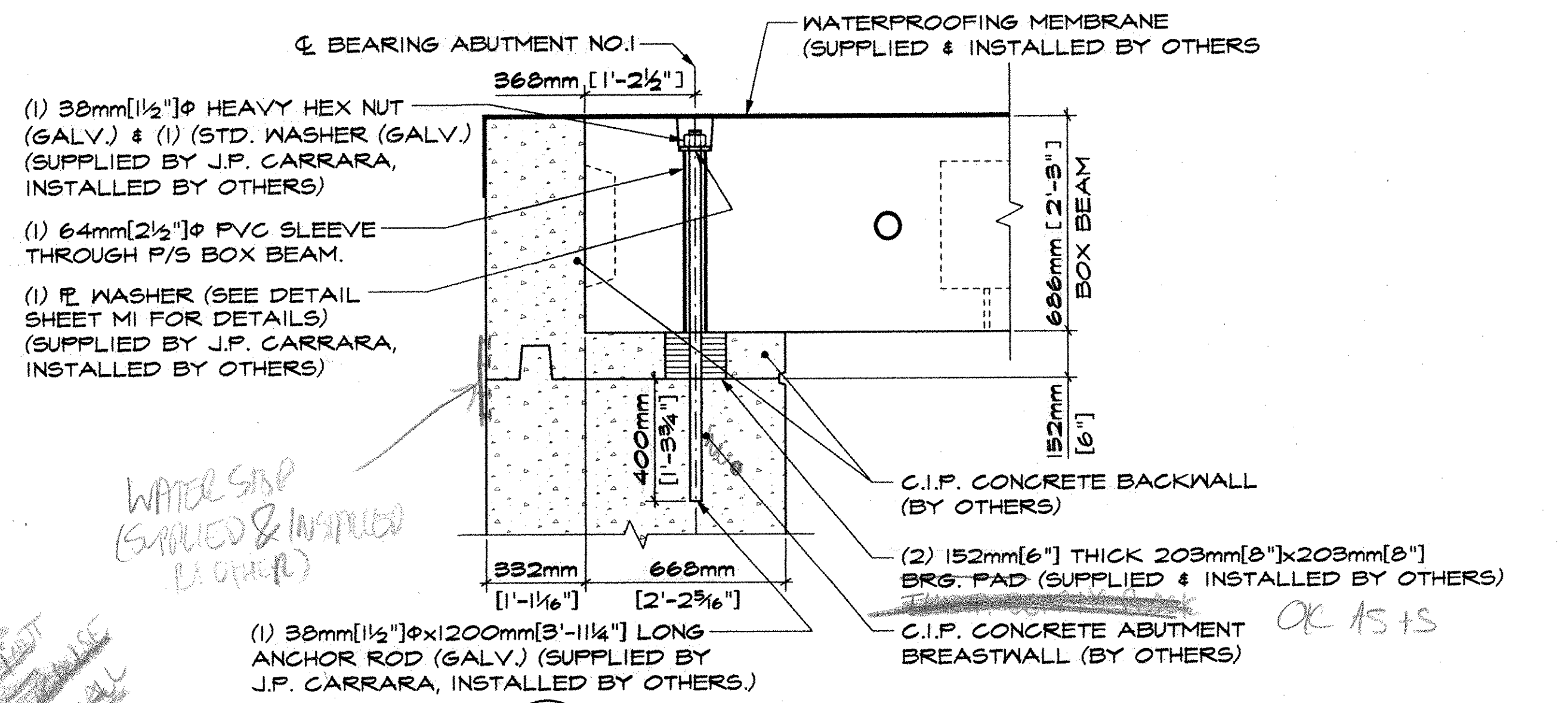
- (1) 3"  $\phi$  HOLE THROUGH F/S BOX BEAM MADE FROM 3"  $\phi$  I.D. PVC (SLEEVE TO REMAIN IN BEAM)
- (1) 1/2"  $\phi$  POLYSTYRAND (SUPPLIED & INSTALLED BY J.P. CARRARA)
- (1) EM-1 (SEE SHT 'M1' FOR DETAIL)



**A DETAIL "A"**  
F2 7.5:1



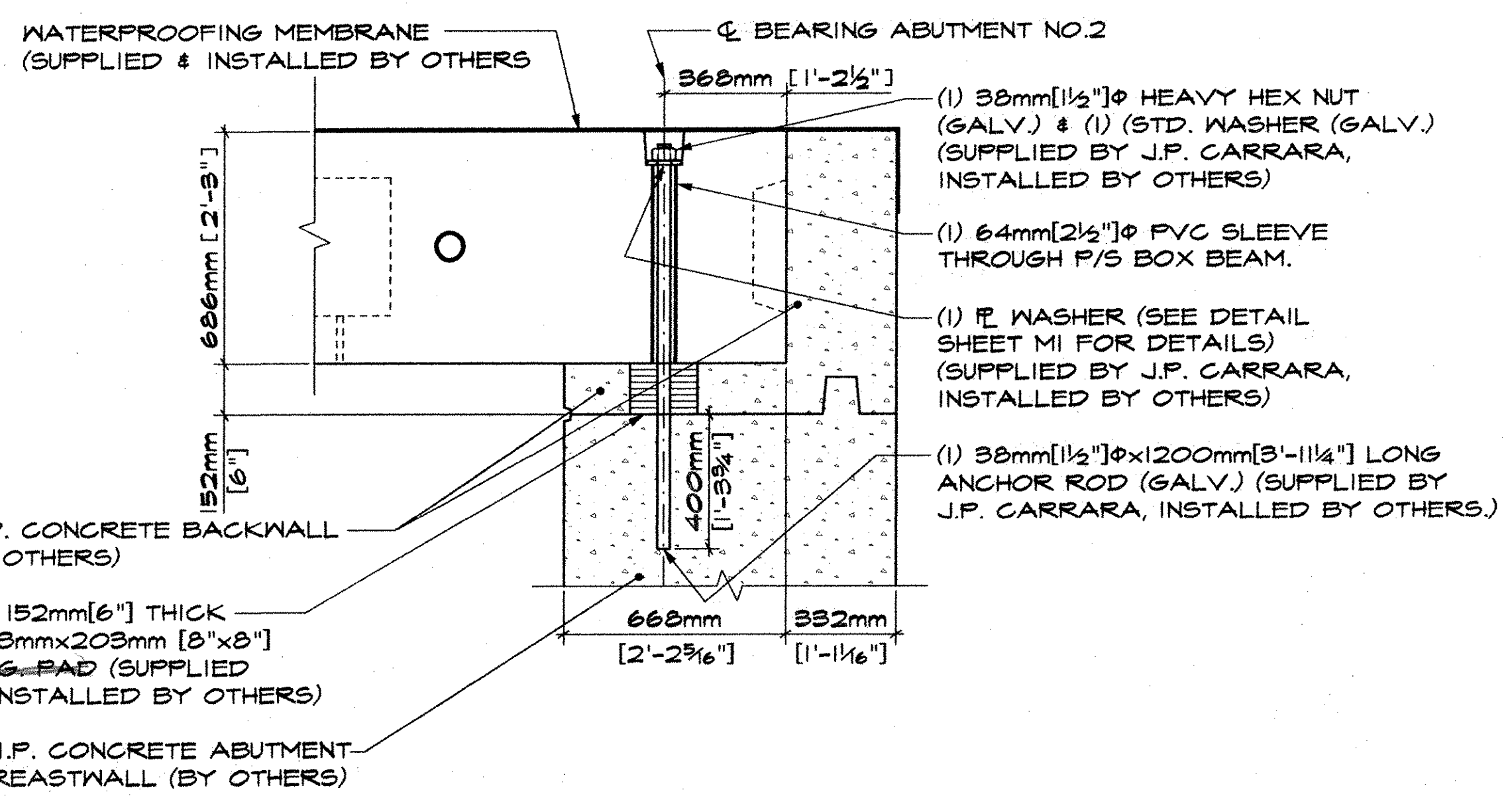
**B DETAIL "B"**  
F2 10:1



**3 BEARING SECTION ABUTMENT NO. 1**  
F2 15:1

- (1) 30mm [1 1/2"  $\phi$  HEAVY HEX NUT (GALV.) & (1) (STD. WASHER (GALV.)) (SUPPLIED BY J.P. CARRARA, INSTALLED BY OTHERS)
- (1) 64mm [2 1/2"  $\phi$  PVC SLEEVE THROUGH F/S BOX BEAM.
- (1) P. WASHER (SEE DETAIL SHEET M1 FOR DETAILS) (SUPPLIED BY J.P. CARRARA, INSTALLED BY OTHERS)

WATER STOP (SUPPLIED & INSTALLED BY OTHERS)



**4 BEARING SECTION ABUTMENT NO. 2**  
F2 15:1

- (1) 30mm [1 1/2"  $\phi$  HEAVY HEX NUT (GALV.) & (1) (STD. WASHER (GALV.)) (SUPPLIED BY J.P. CARRARA, INSTALLED BY OTHERS)
- (1) 64mm [2 1/2"  $\phi$  PVC SLEEVE THROUGH F/S BOX BEAM.
- (1) P. WASHER (SEE DETAIL SHEET M1 FOR DETAILS) (SUPPLIED BY J.P. CARRARA, INSTALLED BY OTHERS)
- (1) 30mm [1 1/2"  $\phi$  x 1200mm [3'-11 1/4" LONG ANCHOR ROD (GALV.) (SUPPLIED BY J.P. CARRARA, INSTALLED BY OTHERS.)

APPROVAL STAMP:  RECEIVED OK'D BY: <u>OWC</u> AUG 04 2006 RESUBMIT APPROVED: <u>AS NOTED</u> BY: _____ DATE: AUG 10 2006	<b>J.P. CARRARA &amp; SONS INC.</b> Precast & Prestress Manufacturer 2464 CASE STR., WOODBURY, VERMONT 05755 Phone: (802) 338-6361 Fax: (802) 338-9010		TREMBLAY CONSTRUCTION, LLC. CONTRACTOR WASHINGTON, VT.	
	STATE OF VERMONT A.O.T. COUNTY OF ORLEANS		DATE: 7-16-06 SCALE: NOTED	
	TOWN OF CHARLESTON PROJECT NUMBER BRO-1449(22) TH41, CLASS 2 TOWN HIGHWAY, BRIDGE NO. 16		CHKD: _____ DFTM: ETC JOB NO: 23241-06	
	<b>SUPERSTRUCTURE SECTION</b>		DWG NO: <b>F2</b>	