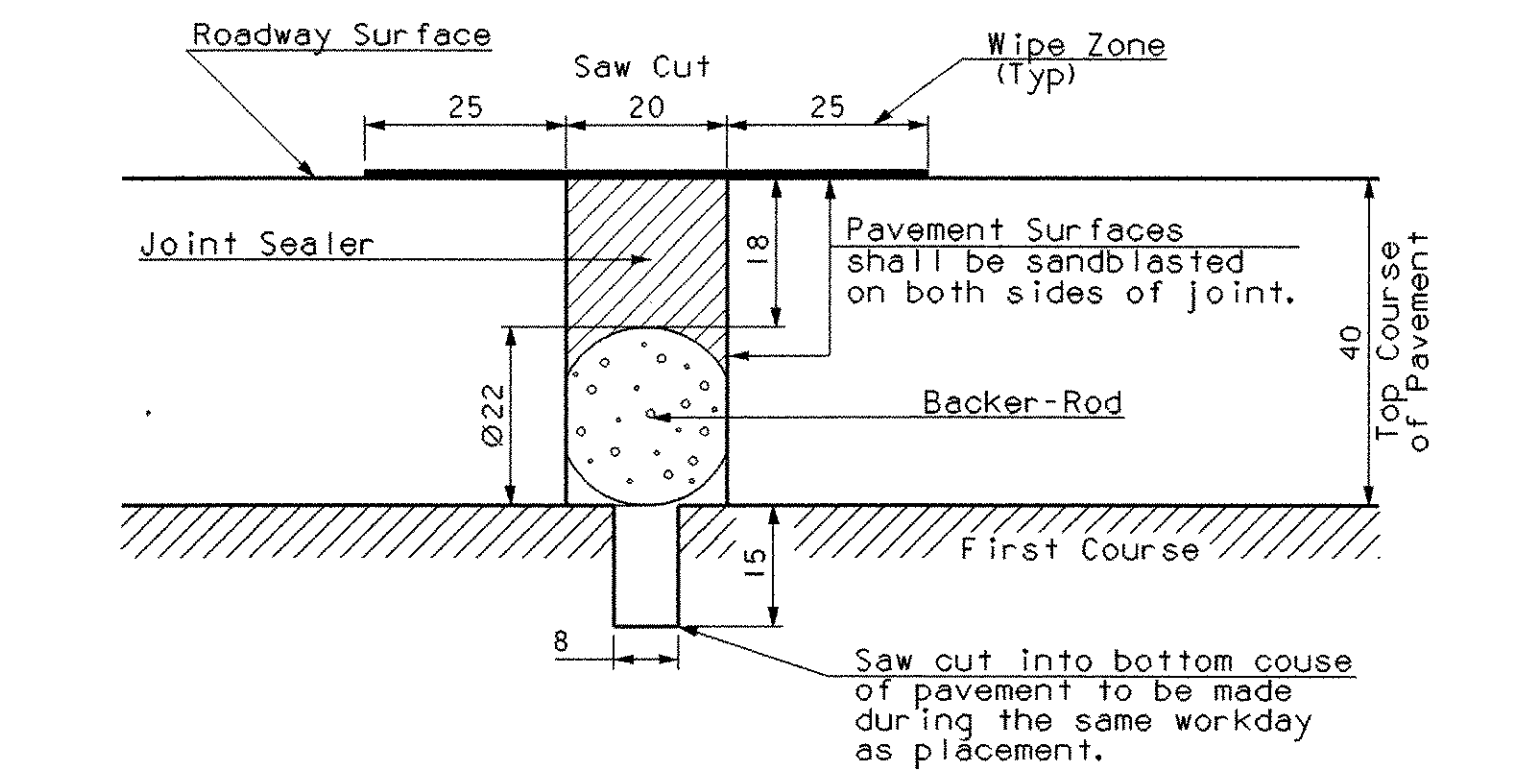


Anchoring Detail Notes

- Anchor bolts, steel plates and nuts shall be paid for as part of Item 510.21 Prestressed Concrete Box Beams (I220x690)
- All Anchor Bolts and Nuts are AASHTO M164M and shall be zinc coated. All Washers are AASHTO M270M Grade 345 and shall be galvanized by AASHTO M111M.

5a ANCHORING DETAIL 1:5



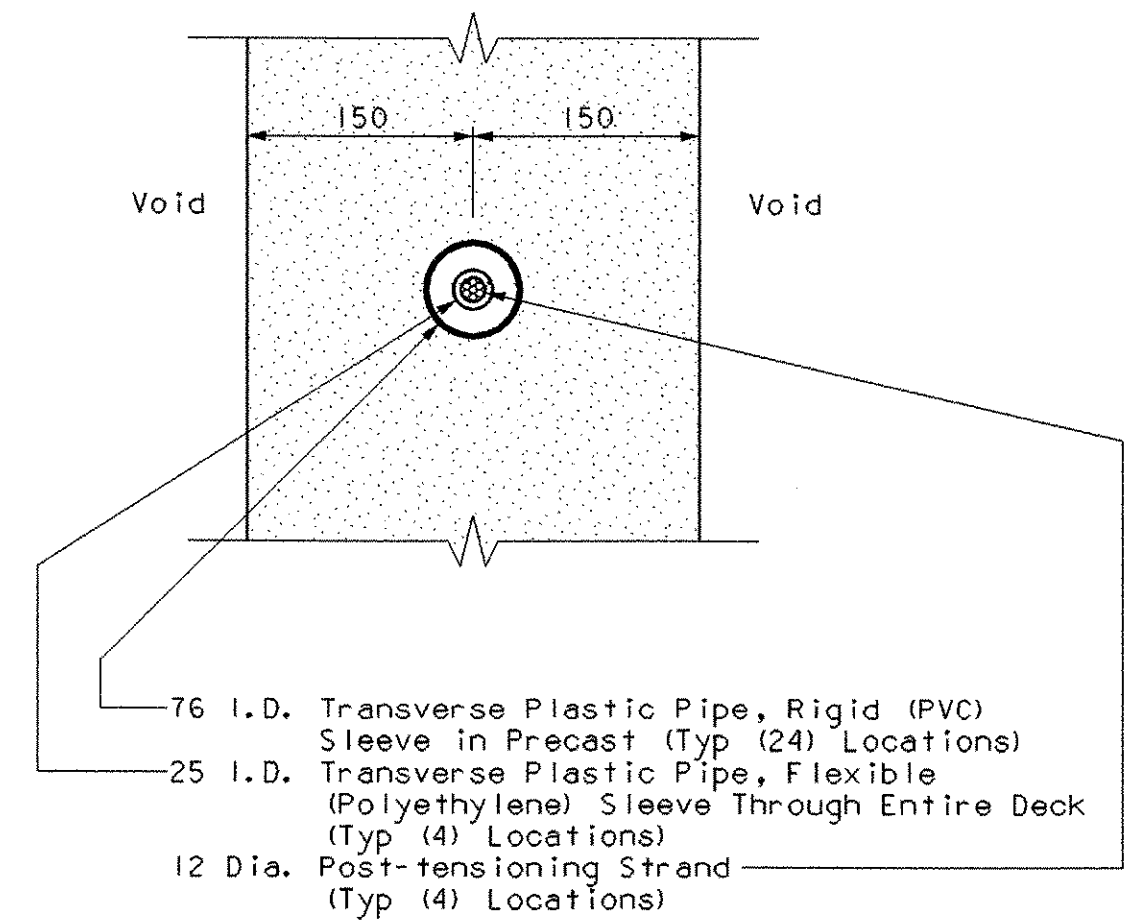
The Contractor shall locate the joint accurately by string lining, or other means, prior to paving, so that the saw cut will be made directly over the ends of the concrete deck. The Contractor shall dry-cut the joint in a single pass, then remove all debris and dust particles prior to applying the joint sealer. Refer to VT Specification 524.

BACKER ROD: Use a 22mm diameter heat resistant foam backer-rod. Press the backer-rod into the joint making sure it is snug. Backer rod and saw cutting of pavement will be considered incidental to Item 524.11 (Joint sealer hot poured) or Item 524.13 (Joint sealer cold poured).

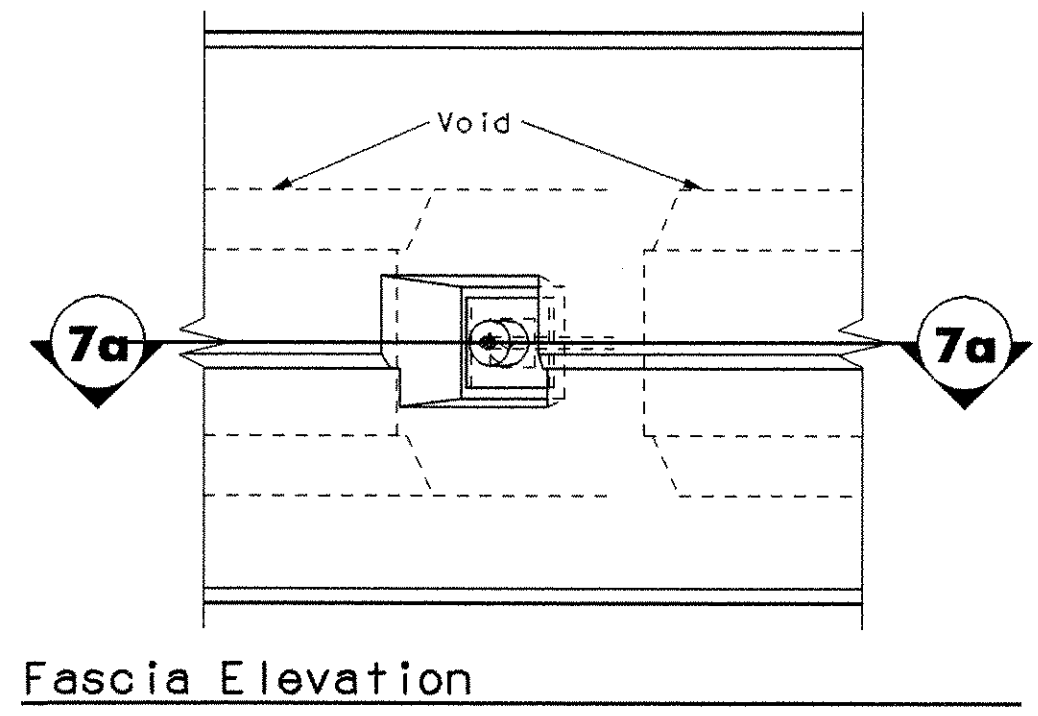
JOINT SEALER: Use either a hot or cold poured joint sealer. Overfill the joint cut then wipe flush with a "V" or "U" shaped squeegee to provide a 25mm wipe zone each side of joint.

5b PAVEMENT JOINT DETAIL NTS

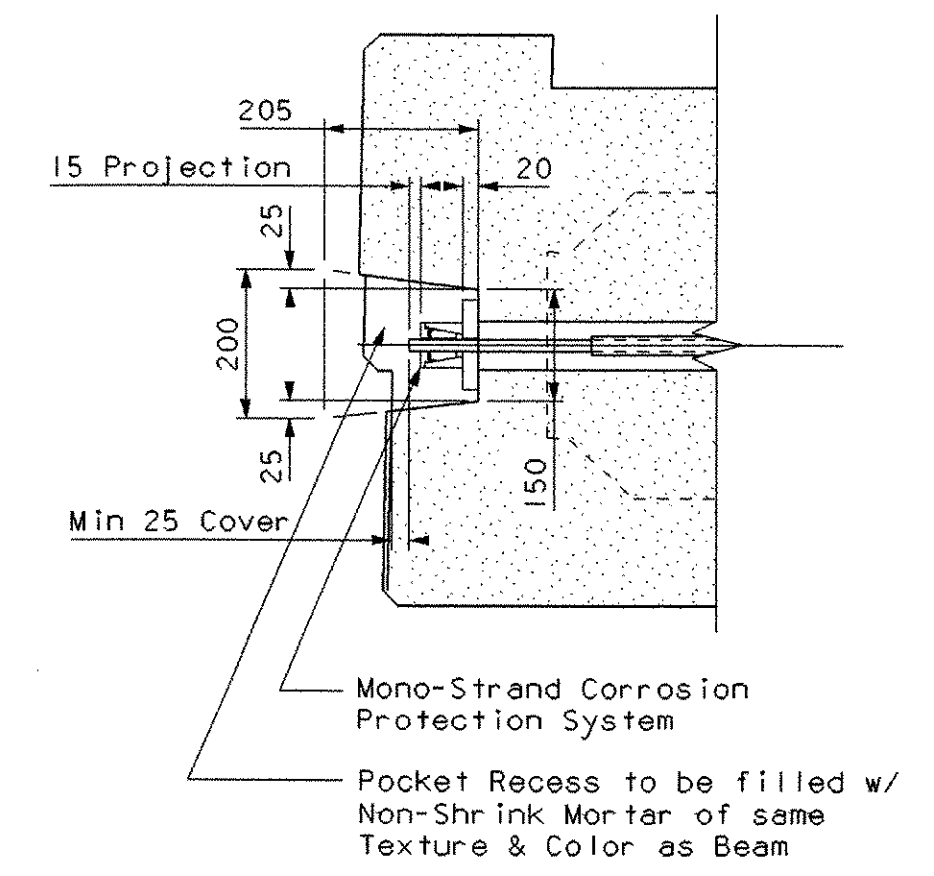
5 END OF BRIDGE DETAILS



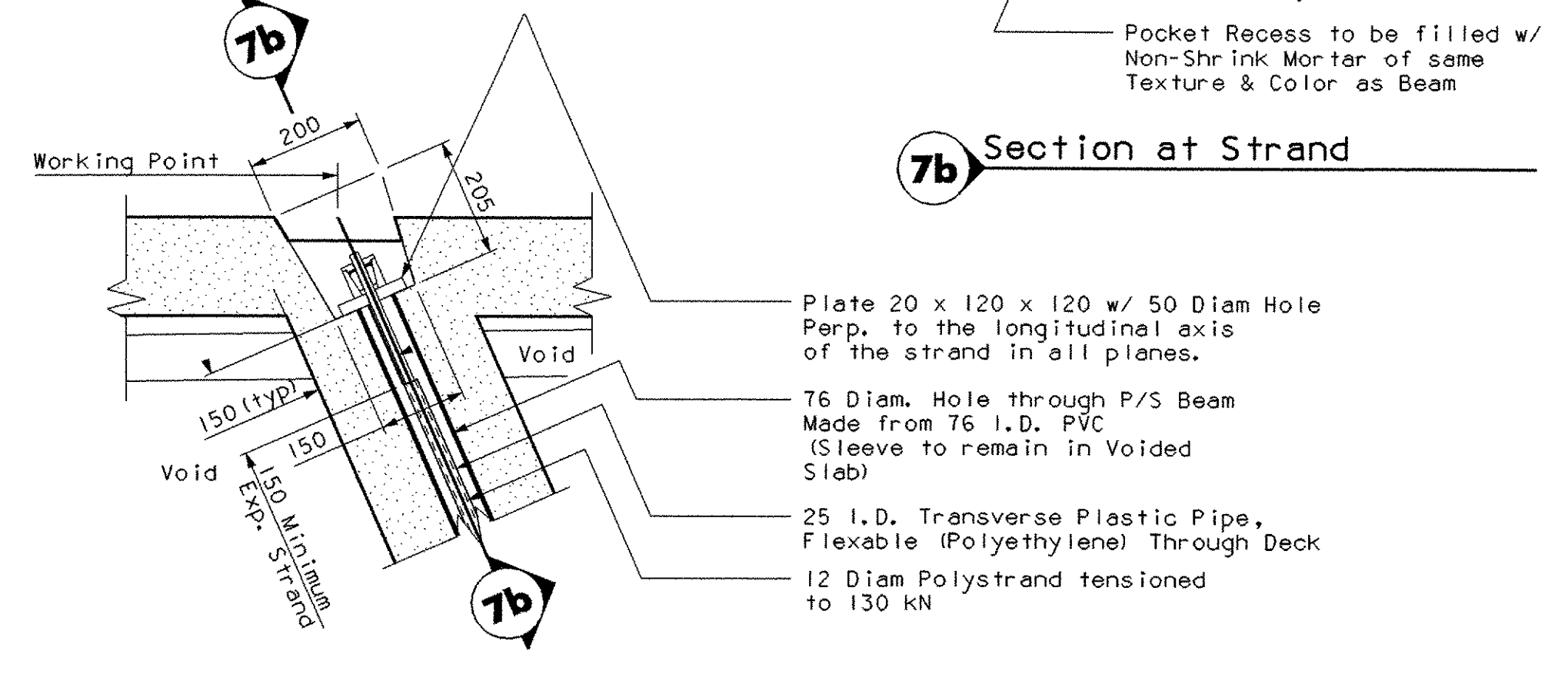
6 POST TENSIONING STRAND SLEEVE 1:5



7a Fascia Elevation

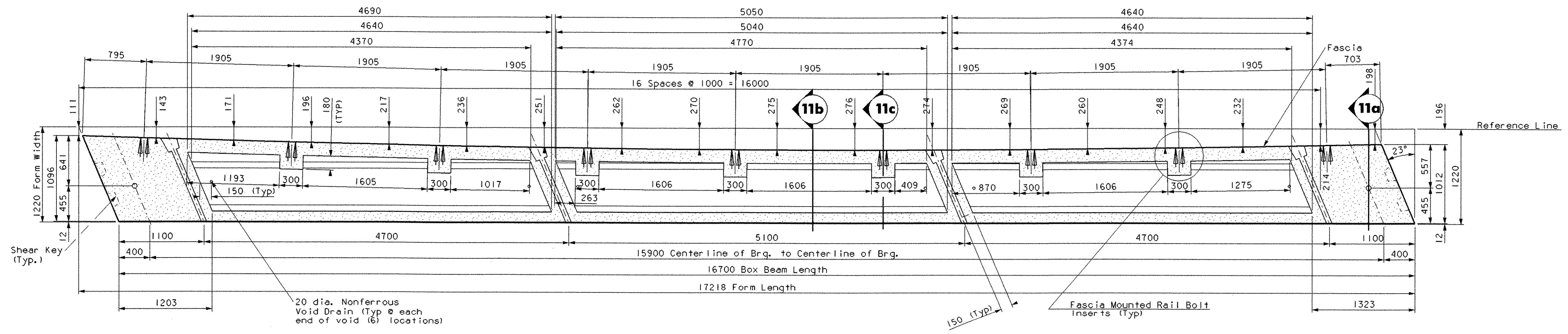


7b Section at Strand



7a Plan of Pocket

7 POST TENSIONING STRAND POCKET 1:10



8 BOX BEAM 1 DIMENSIONAL PLAN @ STRAND ELEVATION 1:30

LEFT FASCIA PRESTRESSED BOX BEAM DETAILS	
PROJECT NAME:	Charleston
PROJECT NUMBER:	BRO 1449 (22)
FILE NAME:	93J051/STR./sj051psl.dgn
PROJECT MANAGER:	M. EVANS-MONGEON
DESIGNED BY:	George Colgrove
IPARM:	sj051ps2.1
PLOT DATE:	13-APR-2006
DRAWN BY:	G. Colgrove
CHECKED BY:	S. Scribner
SHEET 29 OF 50	