

Set New Sign (Traffic Signs, Type A)

Sta. 1+035 Rt. "Stop Ahead"

Anchor For Steel Beam Rail

Sta. 1+093.03 Lt.
Sta. 1+103.48 Rt.
Sta. 1+142.56 Lt.
Sta. 1+141.58 Rt.

Grass Lined Ditch

Sta. 1+070.00 Lt. - Sta. 1+109.00 Lt.
Sta. 1+126.50 Lt. - Sta. 1+147.50 Lt.

Heavy Duty Steel Beam Guard Rail (Galvanized)

Sta. 1+088.91 Lt. - Sta. 1+108.11 Lt.
Sta. 1+099.97 Rt. - Sta. 1+111.17 Rt.
Sta. 1+131.30 Lt. - Sta. 1+146.45 Lt.
Sta. 1+133.75 Rt. - Sta. 1+145.10 Rt.

Bridge Rail - HD Steel Beam/Fascia Mtd./Galvanized

Sta. 1+108.11 Lt. - Sta. 1+131.30 Lt.
Sta. 1+111.17 Rt. - Sta. 1+133.75 Rt.

Construct Drive

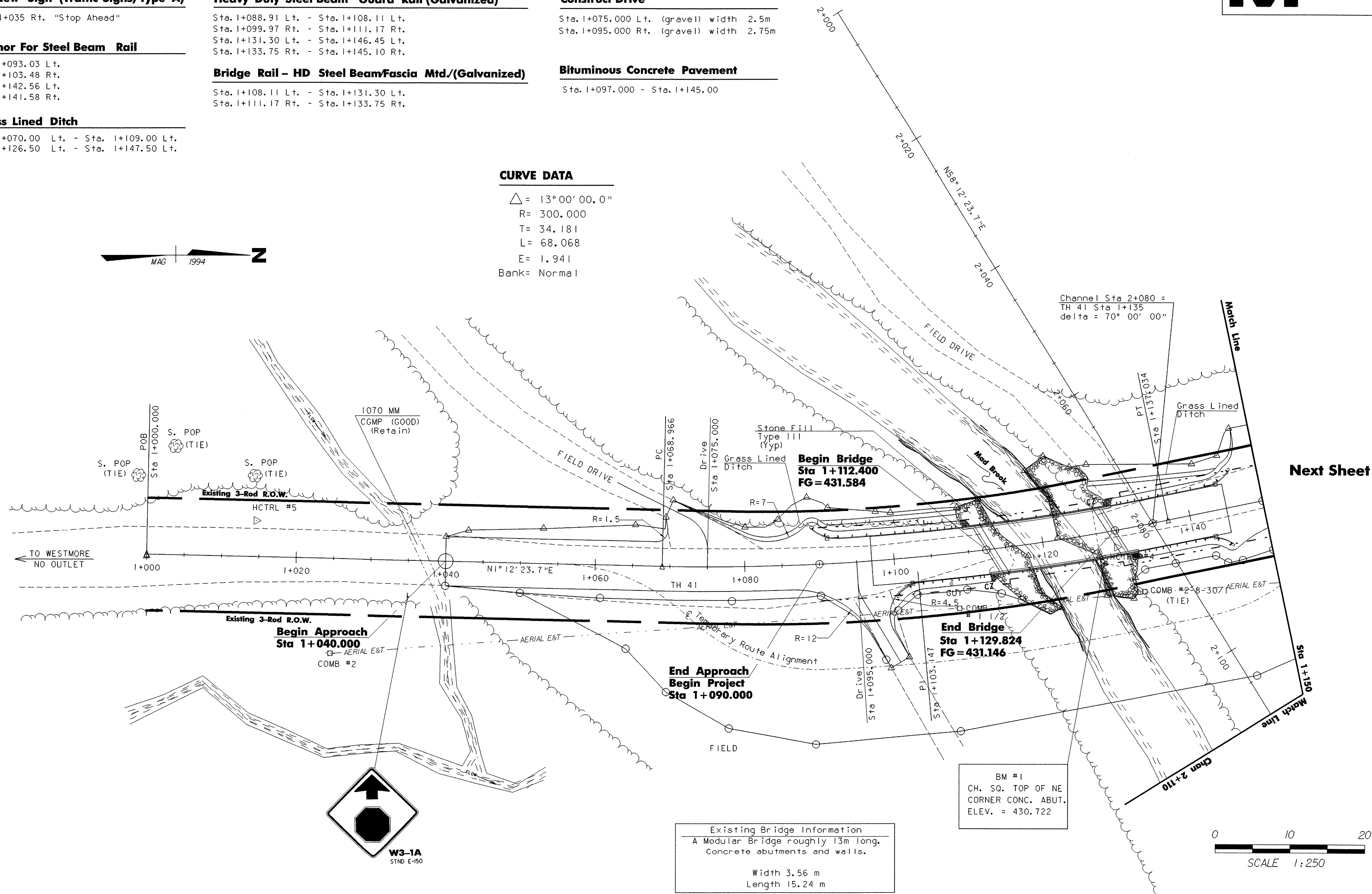
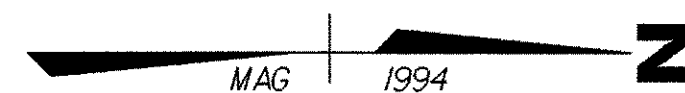
Sta. 1+075.000 Lt. (gravel) width 2.5m
Sta. 1+095.000 Rt. (gravel) width 2.75m

Bituminous Concrete Pavement

Sta. 1+097.000 - Sta. 1+145.00

CURVE DATA

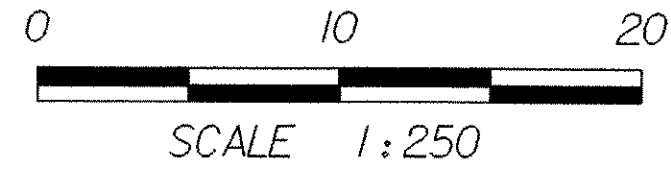
$\Delta = 13^{\circ}00'00.0''$
R= 300.000
T= 34.181
L= 68.068
E= 1.941
Bank= Normal



Existing Bridge Information
A Modular Bridge roughly 13m long.
Concrete abutments and walls.

Width 3.56 m
Length 15.24 m

BM #1
CH. SQ. TOP OF NE
CORNER CONC. ABUT.
ELEV. = 430.722



DATUM	
VERTICAL	NAD83
HORIZONTAL	N/A

LAYOUT SHEET 1	
PROJECT: Charleston	PROJECT NO.: BRO 1449 (22)
DESIGN FILE NAME: /str3/93j051/sj051bdr.dgn	PLOT DATE: 13-APR-2006
IPARM FILE NAME: sj051sl1	SURVEYED BY: L.Orvis
SURVEYED BY: L.Orvis	SURVEY DATE: 1-94
SQUAD LEADER: M. Evans-Mongeon	DRAWN BY: G.Colgrove
DESIGNED BY: G. Colgrove	SHEET: 11 OF 50