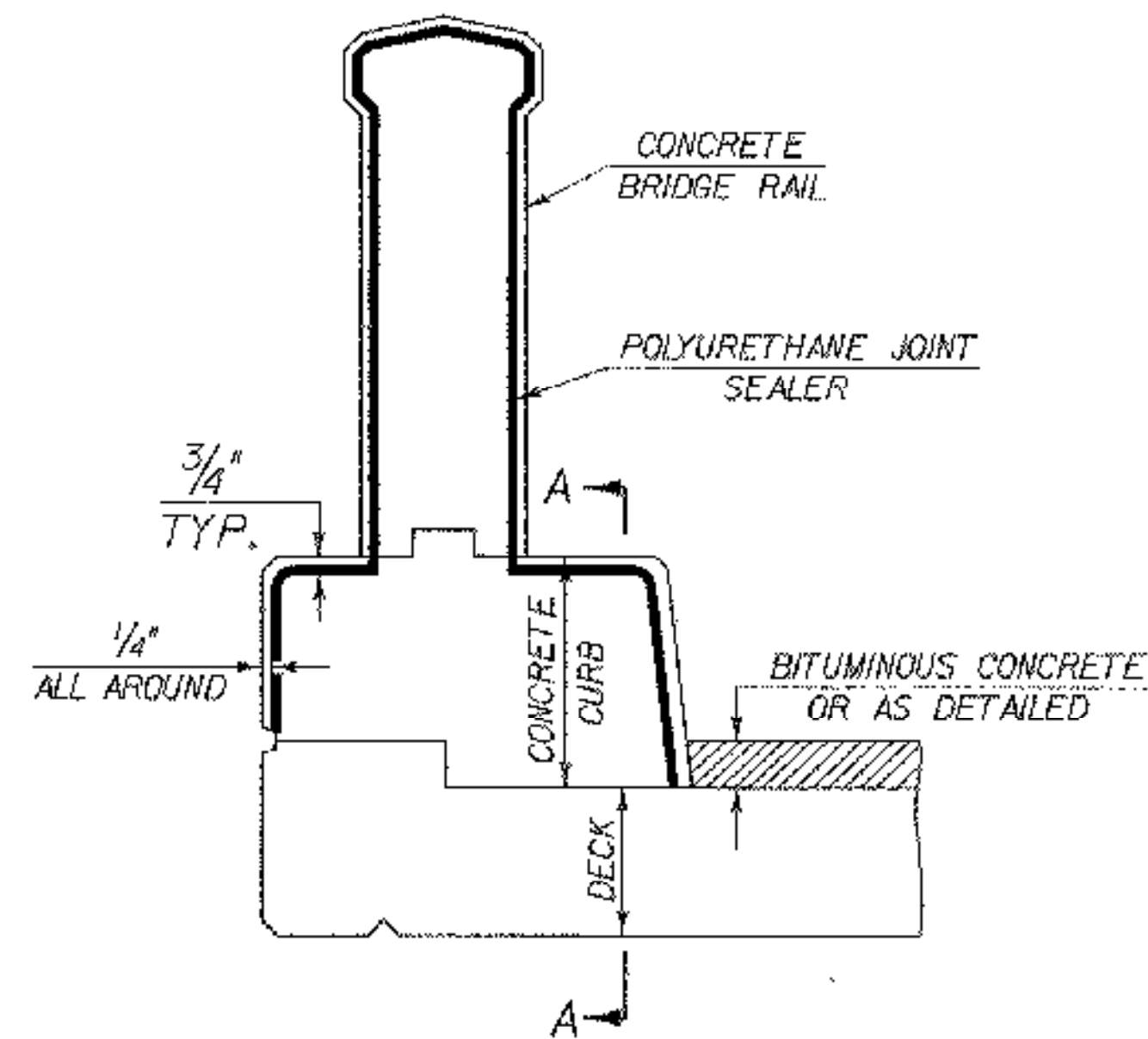
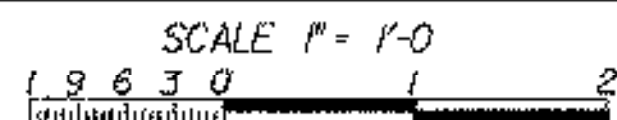


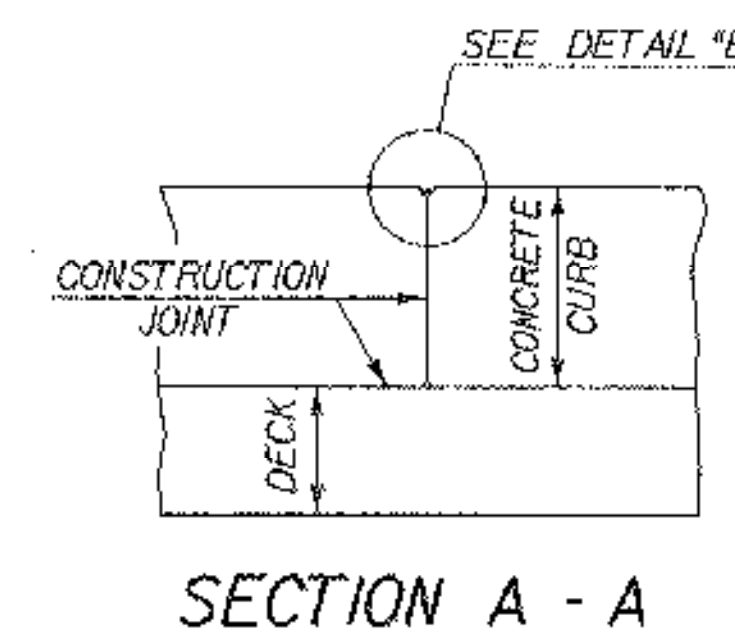
**NOTES**

1. INDICATES AREA ALONG DECK AND UP FACE OF CURB FOR PLACEMENT OF 2 COATS OF POLYURETHANE MEMBRANE.
2. POLYURETHANE MEMBRANE AND BLAST CLEANING SHALL BE INCLUDED IN THE UNIT PRICE BID FOR SHEET MEMBRANE WATERPROOFING.
3. SHEET MEMBRANE WATERPROOFING SHALL EXTEND TO FACE OF CURB AS SHOWN ABOVE.
4. BLAST CLEAN 3'-0" FROM FACE OF CURB AND 3" UP CURB FACE PRIOR TO PLACING MEMBRANE.
4. ALL CONCRETE IN CURB AND RAIL SHALL BE HIGH PERFORMANCE, CLASS A CONCRETE.

**CONCRETE CURB AND RAIL DETAIL**

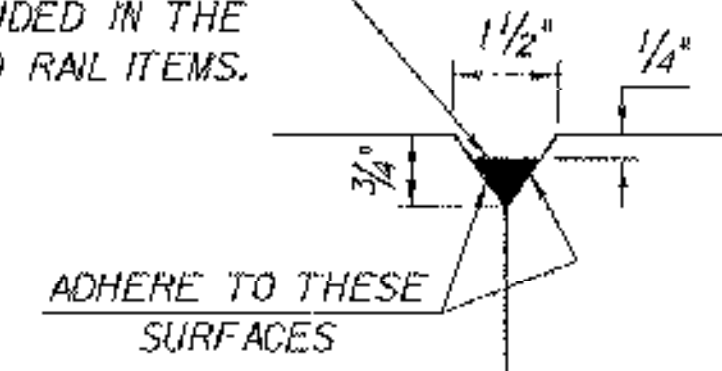


**TYPICAL SECTION THROUGH CONCRETE CURB AND BRIDGE RAIL CONSTRUCTION JOINT**



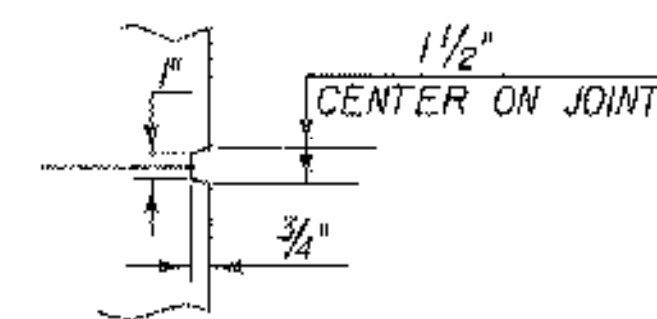
**SECTION A - A**

POLYURETHANE JOINT SEALER PER SUBSECTION 524.060 COLOR TO MATCH CONCRETE. COST TO BE INCLUDED IN THE CONCRETE CURB AND RAIL ITEMS.

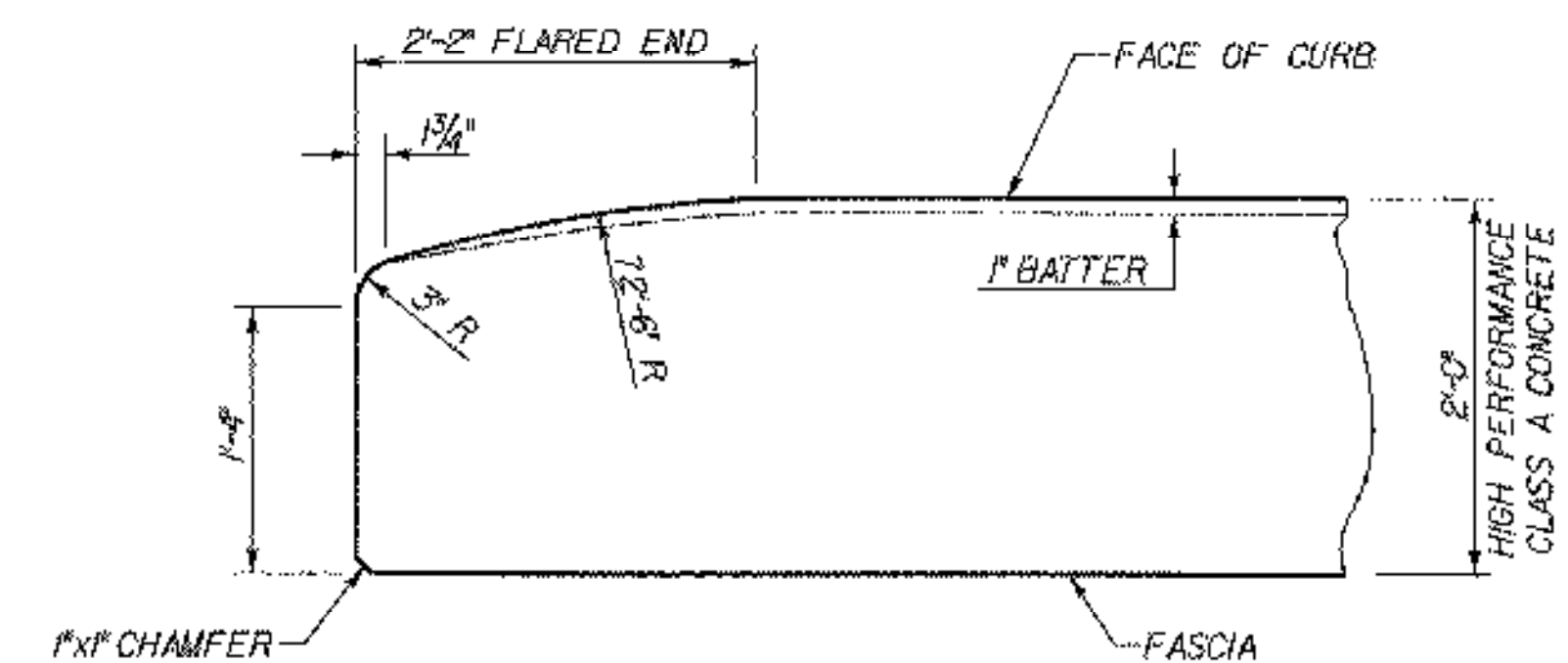


**DETAIL "B"**

- NOTES:
1. THE CONSTRUCTION JOINTS THROUGH THE CONCRETE CURBS SHALL MATCH THE CONSTRUCTION JOINTS FOR THE CONCRETE BRIDGE RAIL. CONCRETE FOR THE CURB AND FOR THE BRIDGE RAIL SHALL BE PLACED IN ALTERNATING SECTIONS WITH A MINIMUM OF 48 HOURS DELAY BETWEEN ADJACENT POURS.
  2. LONGITUDINAL REINFORCING SHALL PASS THROUGH CONCRETE CURB CONSTRUCTION JOINTS.

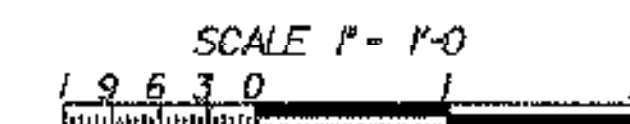


**SCORE MARK DETAIL**



NOTE: CURB REINFORCING STIRRUP BARS SHALL BE TURNED OR CUT AS REQUIRED TO FIT FLARED ENDS.

**FLARED END CURB DETAIL**



BUILT AS DESIGNED

**STATE OF VERMONT  
AGENCY OF TRANSPORTATION**

Town Of	CORINTH	Bridge No.	10C
Highway No.	T.H. 1	Log Sta.	
		Surv. Sta.	

TOWN HIGHWAY NO. 1 OVER WAITS RIVER

**MISCELLANEOUS DETAILS**

Designed By	S. BURBANK	Drawn By	A. THIBAUT
Checked By	M. CHENETTE	Date	05/03
		Bridge Design Supervisor	M. CHENETTE
		Date	05/03
PROJECT	CORINTH	PROJECT NO.	TH2-9352
DH CAD Filename:	...Cor-miscdet15.dgn	Plot Date:	05/07/2003
Bridge Sheet No.		Sheet	21 of 28