

HEAVY DUTY STEEL BEAM GUARD RAIL
 STA 1+002.900 TO 1+007.900 RT
 STA 1+004.800 TO 1+008.600 LT
 STA 1+019.400 TO 1+026.800 RT
 STA 1+020.100 TO 1+027.500 LT

BRIDGE RAILING HEAVY DUTY STEEL BEAM FASCIA MOUNTED
 STA 1+007.900 TO 1+019.400 RT
 STA 1+008.600 TO 1+020.100 LT

ANCHORS FOR STEEL BEAM RAIL
 STA 1+003.000 RT
 STA 1+005.000 LT
 STA 1+025.500 RT
 STA 1+026.300 LT

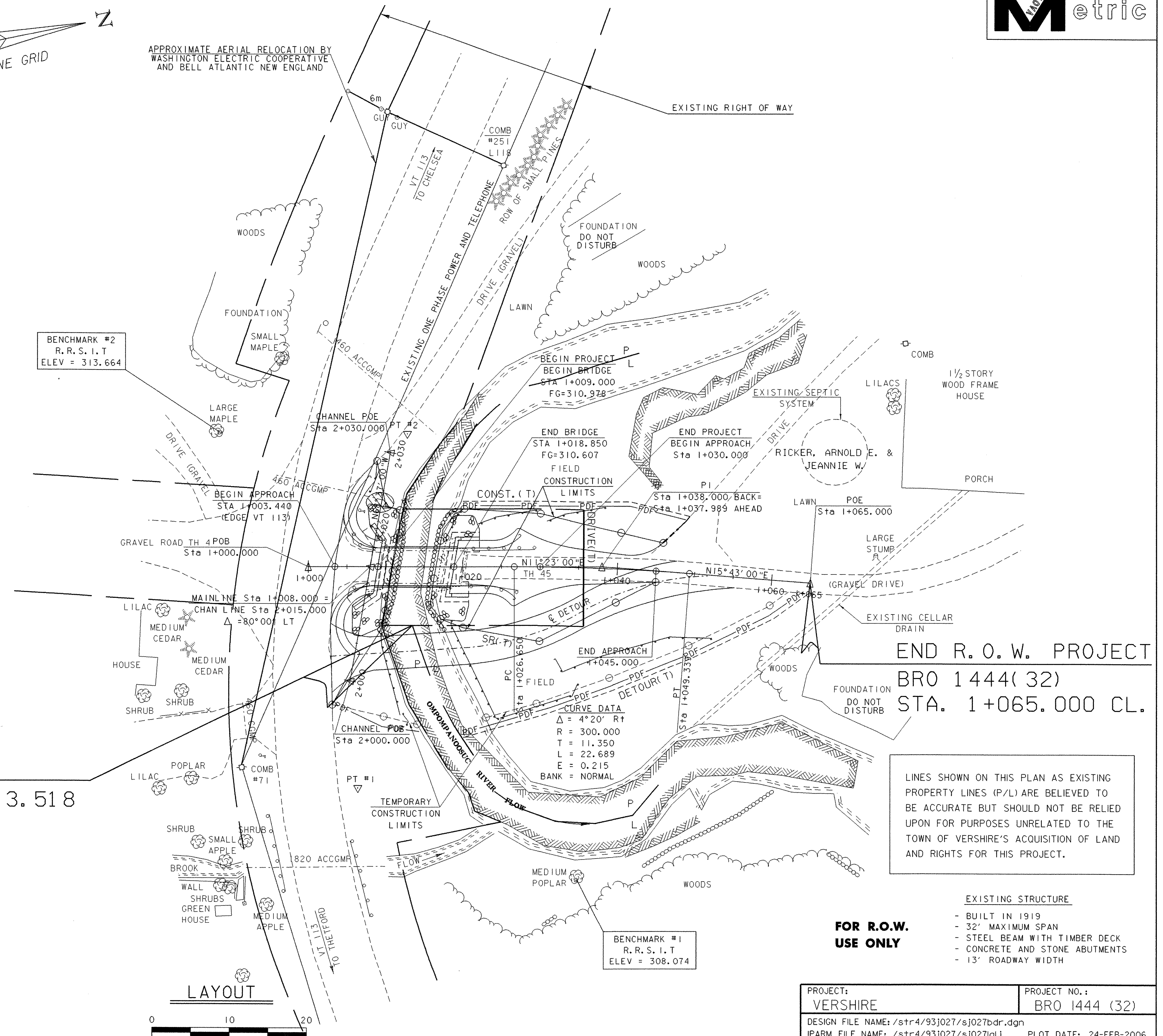
REMOVAL AND DISPOSAL OF GUARDRAIL
 STA 1+005.100 TO 1+007.900 RT
 STA 1+005.700 TO 1+008.700 LT
 STA 1+020.300 TO 1+027.200 RT
 STA 1+021.200 TO 1+029.300 LT

RELOCATE MAILBOX, MULTIPLE SUPPORT
 STA 1+006.700 LT

REMOVE SIGN
 STA 1+007.300 LT

TRAFFIC SIGN, TYPE A
 STA 1+007.500 LT
 STA 1+007.500 RT

BEGIN R. O. W. PROJECT
 BRO 1444(32) STA. 1+013.518
 7.54M (24.75') RT.



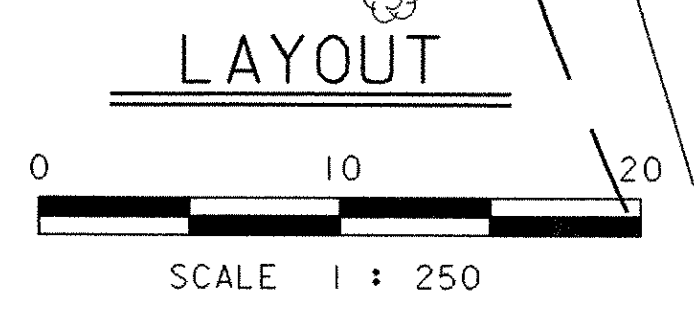
END R. O. W. PROJECT
 BRO 1444(32)
 STA. 1+065.000 CL.

LINES SHOWN ON THIS PLAN AS EXISTING PROPERTY LINES (P/L) ARE BELIEVED TO BE ACCURATE BUT SHOULD NOT BE RELIED UPON FOR PURPOSES UNRELATED TO THE TOWN OF VERSHIRE'S ACQUISITION OF LAND AND RIGHTS FOR THIS PROJECT.

EXISTING STRUCTURE

- BUILT IN 1919
- 32' MAXIMUM SPAN
- STEEL BEAM WITH TIMBER DECK
- CONCRETE AND STONE ABUTMENTS
- 13' ROADWAY WIDTH

FOR R.O.W. USE ONLY



| | |
|--------------|-----------|
| DATUM | |
| VERTICAL | NAVD 88 |
| HORIZONTAL | NAD 83/92 |

| | |
|---|---------------------------------------|
| PROJECT: VERSHIRE | PROJECT NO. : BRO 1444 (32) |
| DESIGN FILE NAME: /str4/93j027/sj027bdr.dgn | PLOT DATE: 24-FEB-2006 |
| IPARM FILE NAME: /str4/93j027/sj027ql.l | SURVEY DATE: 11/94 |
| SURVEYED BY: R. GILMAN | DRAWN BY: KMH |
| SQUAD LEADER: C.P. WILLIAMS | |
| R.O.W. SHEET 9 OF 9 SHEETS | SHEET 20 OF 34 |