

HEAVY DUTY STEEL BEAM GUARD RAIL
 STA 1+002.900 TO 1+007.900 RT
 STA 1+004.800 TO 1+008.600 LT
 STA 1+019.400 TO 1+026.800 RT
 STA 1+020.100 TO 1+027.500 LT

BRIDGE RAILING HEAVY DUTY STEEL BEAM FASCIA MOUNTED
 STA 1+007.900 TO 1+019.400 RT
 STA 1+008.600 TO 1+020.100 LT

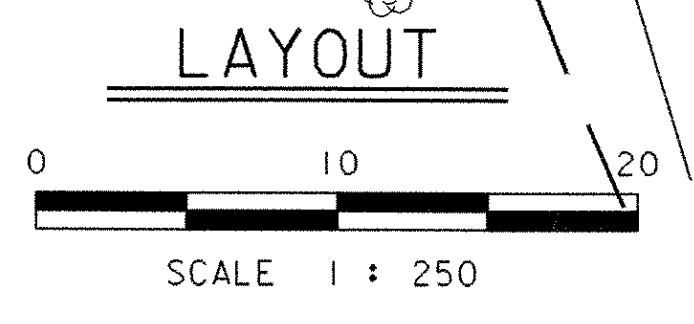
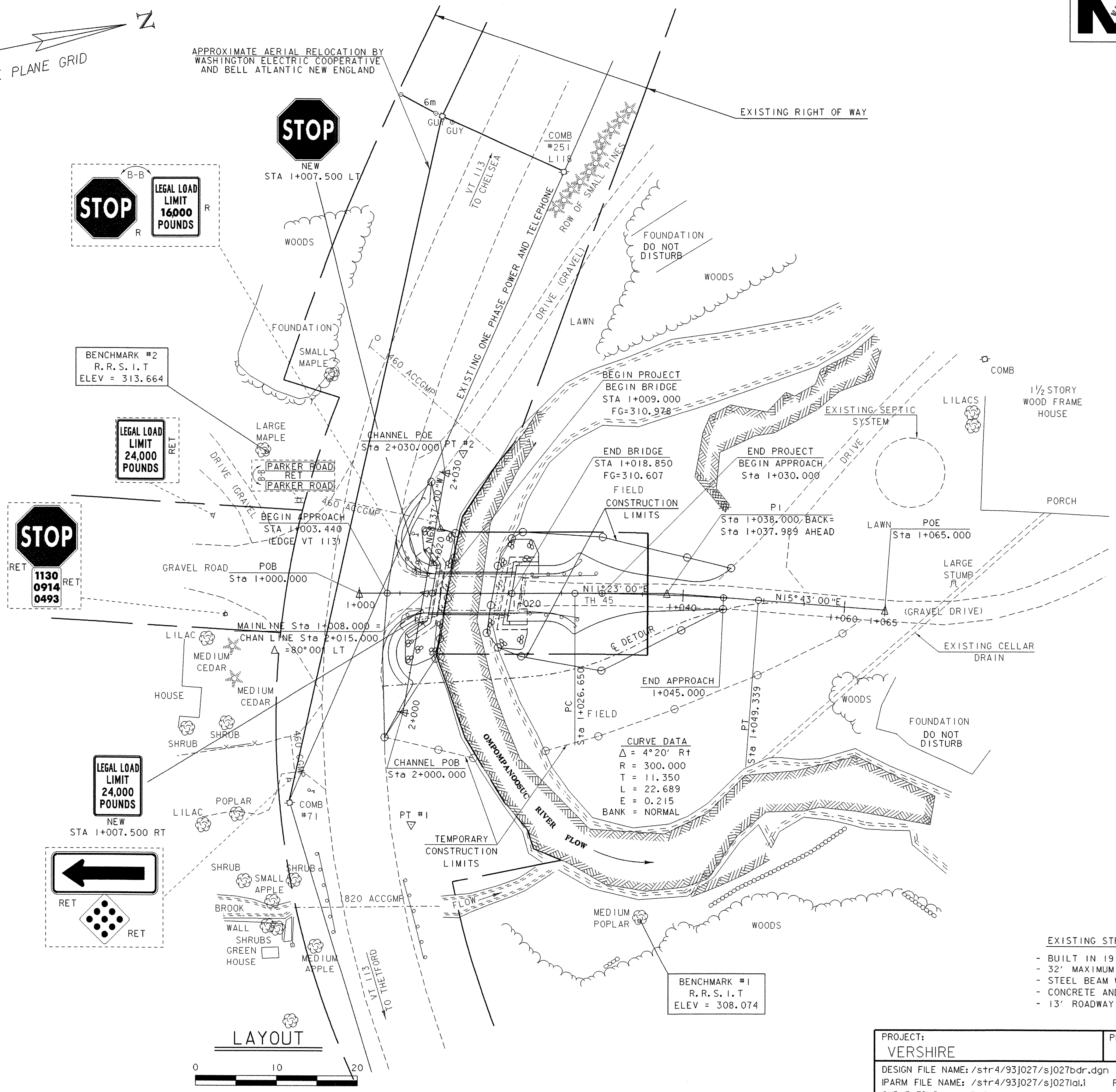
ANCHORS FOR STEEL BEAM RAIL
 STA 1+003.000 RT
 STA 1+005.000 LT
 STA 1+025.500 RT
 STA 1+026.300 LT

REMOVAL AND DISPOSAL OF GUARDRAIL
 STA 1+005.100 TO 1+007.900 RT
 STA 1+005.700 TO 1+008.700 LT
 STA 1+020.300 TO 1+027.200 RT
 STA 1+021.200 TO 1+029.300 LT

RELOCATE MAILBOX, MULTIPLE SUPPORT
 STA 1+006.700 LT
REMOVE SIGN
 STA 1+007.300 LT
TRAFFIC SIGN, TYPE A
 STA 1+007.500 LT
 STA 1+007.500 RT

LEGEND
 ALL SIGNS AND POSTS WILL BE NEW UNLESS OTHERWISE NOTED:
 R - REMOVE
 R&S - REMOVE & SALVAGE
 S - SALVAGE
 RET - RETAIN

DATUM
 VERTICAL NAVD 88
 HORIZONTAL NAD 83/92



PROJECT: VERSHIRE	PROJECT NO. : BRO 1444 (32)
DESIGN FILE NAME: /str4/93j027/sj027bdr.dgn	PLOT DATE: 24-FEB-2006
IPARM FILE NAME: /str4/93j027/sj027la.l	SURVEY DATE: 11/94
SURVEYED BY: R. GILMAN	DRAWN BY: KMH
SQUAD LEADER: C. P. WILLIAMS	SHEET: 7 OF 34
LAYOUT	