

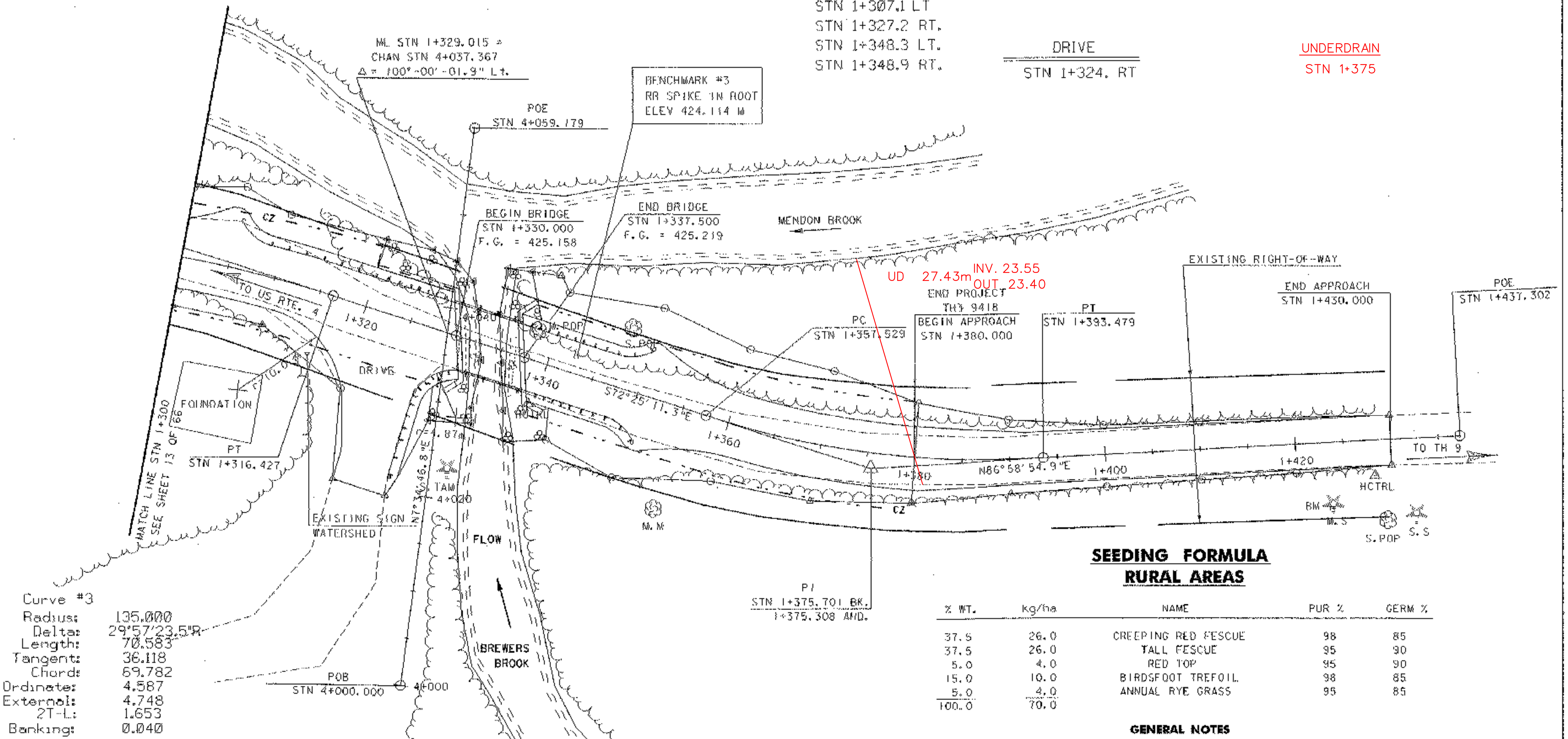
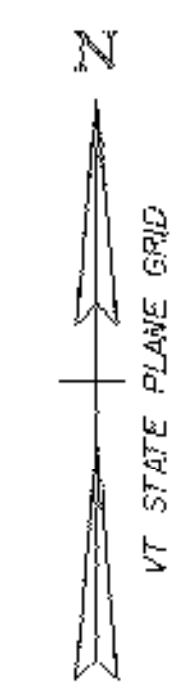


Curve #4
 Radius: 100.000
 Delta: 20°35'53.8"L
 Length: 35.951
 Tangent: 18.172
 Chord: 35.757
 Ordinate: 1.611
 External: 1.638
 2T-L: 0.393

525.41 BRIDGE RAILING - HD STEEL BEAM/FASCIA MOUNTED, TYPE D
 STN 1+327.8 - 1+337.3 LT.
 STN 1+330.4 - 1+339.9 RT.

621.21 HEAVY DUTY STEEL BEAM GUARD RAIL, TYPE 4
 STN 1+305.0 - 1+327.8 LT.
 STN 1+337.3 - 1+350.5 LT.
 STN 1+327.0 - 1+330.4 RT.
 STN 1+339.9 - 1+351.0 RT.

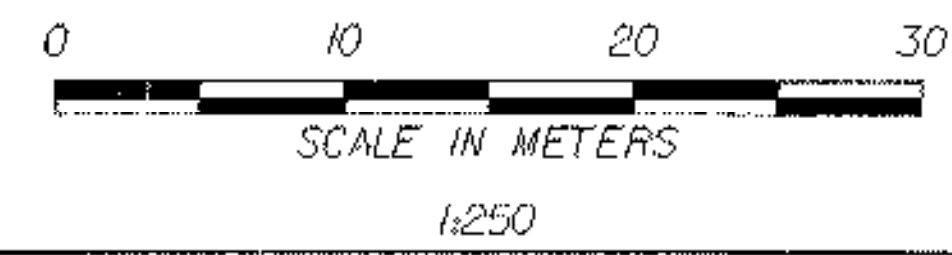
621.60 ANCHOR FOR STEEL BEAM GUARD RAIL
 STN 1+307.1 LT
 STN 1+327.2 RT.
 STN 1+348.3 LT.
 STN 1+348.9 RT.



Curve #3
 Radius: 135.000
 Delta: 29°57'23.5"R
 Length: 70.583
 Tangent: 36.118
 Chord: 69.782
 Ordinate: 4.587
 External: 4.748
 2T-L: 1.653
 Banking: 0.040

EXISTING BRIDGE DATA

BRIDGE WIDTH: 4.34
 ROADWAY WIDTH: 4.27
 BRIDGE LENGTH: 6.10
 CLEAR SPAN: 4.88
 CLEAR HEIGHT: UNKNOWN
 THE EXISTING STRUCTURE IS A CONCRETE DECK ON ROLLED BEAM STRINGERS.
 THE EXISTING ABUTMENTS ARE POURED IN PLACE CONCRETE.
 THERE IS ALSO AN EXISTING BAILEY BRIDGE.



**SEEDING FORMULA
 RURAL AREAS**

% WT.	kg/ha	NAME	PUR %	GERM %
37.5	26.0	CREEPING RED FESCUE	98	85
37.5	26.0	TALL FESCUE	95	90
5.0	4.0	RED TOP	95	90
15.0	10.0	BIRDSFOOT TREFOIL	98	85
5.0	4.0	ANNUAL RYE GRASS	95	85
100.0	70.0			

GENERAL NOTES

SEED MIXTURE: SHALL NOT HAVE A WEED CONTENT EXCEEDING 0.40% BY WEIGHT AND SHALL BE FREE OF ALL NOXIOUS SEED.
 SEED: TO BE APPLIED PER SEEDING FORMULAS OR AS DIRECTED BY THE ENGINEER.
 FERTILIZER: FORMULA 10-20-10, TO BE USED WITH SEED, APPLIED AT THE RATE OF 560 kg/ha. (HYDRO SEEDERS MAY USE 19-19-19 FORMULA).
 AGRICULTURAL LIMESTONE: TO BE APPLIED AT THE RATE OF 4500 kg/ha, OR AS DIRECTED BY THE ENGINEER.
 HAY MULCH: TO BE PLACED ON EARTH SLOPES AT THE RATE OF 4500 kg/ha, OR AS DIRECTED BY THE ENGINEER.
 TOPSOIL: TO BE USED WITH SEED AS INDICATED ON THE PLANS, OR AS DIRECTED BY THE ENGINEER.

PROJECT: MENDON	PROJECT NO.: TH 3 9418
DESIGN FILE NAME: /USR/STR/93J022/SJ022BDR.DGN IPARM FILE NAME: SJ022L63.J	PLOT DATE: 5-JUN-1998
PLAN SHEET	SHEET: 46 OF 66